



DIGITAL DRUM KIT

DD700

USER MANUAL

WARNING!

Do not open cover. No user-serviceable parts inside. Refer servicing to qualified service personnel
Do not place the product in a location near a heat source such as a radiator, or in an area subject to direct sunlight, excessive dust, mechanical vibration or shock
The product must not be exposed to dripping or splashing and no objects filled with liquids, such as vases, shall be placed on the product
No naked flame sources, such as lighted candles, should be placed on the product
Allow adequate air circulation and avoid obstructing vents (if present) to prevent internal heat build-up. The ventilation must not be impeded by covering the appliance with items such as newspapers, table-cloths, curtains etc.
The mains plug is used to disconnect the appliance from the mains supply. Ensure that the mains outlet is easily-accessible and remove the plug from the mains outlet if you notice any abnormality with the appliance.

VAROVÁNÍ!

Nezakrývejte. Uvnitř nejsou žádné součásti opravitelné uživatelem. S požadavkem na servis se odkažte na kvalifikované servisní oddělení. Neumísťujte produkt v blízkosti zdroje tepla, jako je radiátor, nebo na místo s přímým slunečním světlem, nadměrným pršením, mechanickými vibracemi nebo šokem.
Produkt nesmí přijít do kontaktu s vodou a žádné objekty naplněné tekutinami, jako například vázy, by neměly být umístěny na produkt. Žádné zdroje otevřeného ohně, jako například svíčky, by neměly být umístěny na produkt.
Umožněte dostatečnou cirkulaci vzduchu a vyhněte se obstrukci ventilátorů (pokud jsou přítomné) pro předejití interního přehřívání. Ventilace nesmí být narušena překrytím zařízení výrobky jako např. noviny, kuchyňské utěrky, záclony apod.
Hlavní kabel umožňuje odpojit zařízení od elektriny. Ujistěte se, že hlavní napájecí výstup je snadno dostupný a odpojte kabel pokud zaznamenáte jakoukoliv abnormalitu na zařízení.

DVARSEL!

Dækslet må ikke åbnes. Ingen bruger-udskeftelige dele indeni. Overlad service til kvalificeret service personale
Placer ikke produktet i nærheden af varmekilder såsom en radiator eller i direkte sollys, meget støv, mekaniske vibrationer eller stød
Produktet må ikke udsættes for vand eller stænk, og ingen genstande fyldt med væsker, f.eks. vaser, må bringes på produktet
Må ikke placeres nær åben ild, tændte stearinlys må ikke placeres på produktet
Vær sikker på at der er tilstrækkelig luftcirkulation og undgå at dække ventilator (hvis der er nogen) for at undgå at produktet bliver varmt.
Ventilationen må ikke blokeres med overdækning af apparatet med genstande som aviser, dug, gardiner osv.
Stikket bruges til at afbryde apparatet fra strømmen. Sikre at stikkontakten er let tilgængelig, og fjern stikket fra stikkontakten, hvis du bemærker noget unormalt med apparatet.

WAARSCHUWING!

Maak de behuizing niet open. Dit toestel bevat geen onderdelen die door de gebruiker kunnen worden vervangen. Laat onderhoud over aan bevoegd onderhoudspersoneel.
Plaats het product niet in de buurt van een hittebron zoals een radiator of in direct zonlicht of in een stofrijke omgeving, mechanische vibratie of schok.
Plaats het product niet in de buurt van spattende of lekkende voorwerpen gevuld met een vloeistof zoals bijvoorbeeld een vaas.
Er mogen geen open vlammen zoals aangestoken kaarsen op de apparatuur worden geplaatst.
Zorg om overhitting te voorkomen voor voldoende ventilatie en bellemmer ventilatieroosters niet. Bedek het product niet met dingen zoals kranten, tafellakens, gordijnen etc.
De stekker van dit apparaat wordt gebruikt om het apparaat aan en uit te zetten. Zorg ervoor dat het stopcontact gemakkelijk bereikbaar is en haal de stekker uit het stopcontact als u enige onregelmatigheid ondervindt.

EN VAROITUS!

Älä avaa kantta. Ei sisällä käyttäjä-huollettavia osia. Huollot saa suorittaa vain pätevä huoltomies.
Älä säilytä tuotetta minkään kuuman lähellä kuten patteri tai suorassa auringonpaisteesta, pölyisessä, mekaanisessa värinässä tai iskussa
Tuotetta ei saa altistaa tippuvalle tai loiskeelle tai nesteitä sisältäviä tuotteita kuten maljakko eivät saa olla tuotteen lähetyillä
Avotulia kuten sytytetyt kynttilä ei saa olla tuotteen päällä.
Salli riittävä ilmankierto ja vältä tuuletusaukkojen tukkiminen (jos sellaisia on olemassa) estämään sisäisen lämmön muodostuminen. Tuuletusta ei saa estää peittämällä laite esineillä, kuten sanomalehdillä, pöytäliinoilla, verhoilla jne.
Verkkovirtapistoketta käytetään irrottamaan laite verkkovirrasta. Varmista, että pistorasia on helposti saatavilla ja irrota pistotulppa pistorasiasta, jos havaitset jotain epänormaalia laitteessa.

ATTENTION!

Ne pas ouvrir le couvercle. Aucune pièce interne réparable par l'utilisateur. Confier la réparation à du personnel de réparation qualifié
Ne pas laisser l'appareil à proximité d'une source de chaleur telle qu'un radiateur, dans un endroit directement exposé aux rayons du soleil, trop poussiéreux, ou pouvant subir des chocs mécaniques
L'appareil ne doit pas être exposé aux gouttes d'eau et aux éclaboussures, et aucun objet rempli de liquide, tel qu'un vase, ne doit être posé dessus
Ne placer aucune source de flamme nue, telle qu'une bougie allumée, sur l'appareil
Assurer une circulation d'air suffisante et éviter d'obstruer les fentes (le cas échéant) afin d'éviter une surchauffe interne. La ventilation ne doit pas être bloquée en couvrant l'appareil avec des objets tels que des journaux, des nappes, des rideaux, etc.
La prise secteur est utilisée comme dispositif de débranchement. La prise murale doit être facile d'accès, et en cas d'anomalie de l'appareil, débrancher la prise de courant au niveau de la prise murale.

WARNING!

Öffnen Sie nicht das Gehäuse. Im Inneren befinden sich keine vom Benutzer zu wartenden Teile. Überlassen Sie Wartungsarbeiten qualifiziertem Fachpersonal.
Stellen Sie das Produkt nicht an einen Ort in der Nähe einer Wärmequelle wie etwa eines Heizkörpers oder in einem Bereich mit direktem Sonnenlicht, übermäßigem Staub, mechanischen Vibrationen oder Stößen.
Schützen Sie das Produkt vor tropfenden oder spritzenden Flüssigkeiten, und stellen Sie keine mit Flüssigkeiten gefüllten Gegenstände wie Vasen auf das Produkt.
Offene Feuerquellen wie Kerzen dürfen nicht auf dem Gerät abgestellt werden.
Sorgen Sie für eine ausreichende Luftzirkulation und vermeiden Sie, dass die Lüftungsschlitze (falls vorhanden) abgedeckt werden, um einen internen Wärmestau zu verhindern. Die Belüftung darf nicht durch Abdecken des Gerätes mit Gegenständen wie Zeitungen, Tischdecken, Vorhängen usw. blockiert werden.
Der Netzstecker dient zum Trennen des Gerätes vom Netz. Vergewissern Sie sich, dass die Steckdose leicht zugänglich ist, und ziehen Sie den Stecker aus der Steckdose, wenn Sie eine Anomalie mit dem Gerät bemerken.

AVVERTIMENTO!

Non aprire il coperchio. Se fosse necessario, riferirsi ad un esperto.
Non esporre il prodotto a fonti di calore, luce del sole diretta, polvere, vibrazioni meccaniche o altri possibili shock.
Non esporre il prodotto a perdite di liquido o a spruzzi. Non appoggiare nessun oggetto contenente acqua sul prodotto.
Non esporre il prodotto a fuoco, candele o oggetti simili.
Assicurarsi la circolazione dell'aria e non ostruire le ventole, se presenti, per evitare il surriscaldamento. La ventilazione non deve subire impedimenti dovuti a giornali, tovaglie, tende, ecc.
La spina principale viene utilizzata per disconnettere il prodotto dalla principale fonte di energia. Assicurarsi che la spina sia facilmente accessibile e disconnettere l'unità nel caso si notassero dei difetti di funzionamento.

ADVARSEL!

NO

Ikke åpne dekselet. Inneholder ingen deler som kan brukes. Overlat reparasjon til kvalifisert servicepersonell.
Ikke plasser produktet i nærheten av varmekilder som f.eks. en radiator, eller i områder som er utsatt for direkte sollys, mye støv, mekanisk vibrasjon eller støt.
Produktet må ikke settes for drypping eller sprutting, og gjenstander som er fylt med væsker, som f.eks. vaser, skal ikke plasseres på produktet.
Åpne flammer, som f.eks. tente lys, bør ikke plasseres på produktet.
Tillat tilstrekkelig luftstrømkulasjon og unngå å blokkere ventiler (hvis tilstede) for å forhindre intern varmeoppsamling. Pass på at ventilasjon ikke hindres ved å unngå å dekke apparatet med ting som aviser, bordduker, gardiner osv. Stikkontakten brukes til å koble apparatet fra strømforsyningen. Forsikre deg om at stikkontakten er lett tilgjengelig og ta støpselet ut av stikkontakten hvis du oppdager uregelmessigheter under bruk av apparatet.

OSTRZEŻENIE!

PL

Nie otwierać pokrywy. W środku nie ma części nadających się do naprawy przez użytkownika. Prosimy pozostawić serwis dla wyszkolonego personelu.
Nie umieszczać produktu w pobliżu źródła ciepła, np. grzejnika, lub w bezpośrednim świetle słonecznym, kurzu, czy mechanicznym wibracją. Produkt ten nie może być ekspozowany na kąpanie lub chłapanie, a przedmioty wypełnione płynami, takie jak wazy, nie powinny być na nim umieszczane.
Źródła otwartego ognia, takie jak np. świece, nie powinny być umieszczone w produkcie.
Należy zapewnić odpowiednią wentylację i unikać blokowania otworów wentylacyjnych, aby uniknąć wewnętrzznego wzrostu temperatury. Wentylacja nie powinna być utrudniana poprzez nakrywanie urządzenia gazetami, obrusami czy zasłonami.
Wtyczka sieciowa służy do odłączenia urządzenia od zasilania sieciowego. Należy upewnić się, że gniazdo sieciowe jest łatwo dostępne, a w razie wystąpienia nieprawidłowości w funkcjonowaniu urządzenia odłączyć je od zasilania sieciowego.

ATENÇÃO!

PT

Não abra a tampa. Não tente a reparação do instrumento por si. Dirija-se a pessoal qualificado
Não aproxime a uma fonte de calor excessivo ou exponha o produto à luz solar, poeira, vibração ou choque
Não mantenha o produto num local húmido ou perto líquidos como vasos, etc.
Não aproxime o produto a fontes de fogo vivo, como velas
Mantenha o produto num espaço suficientemente arejado de forma a evitar sobre-aquecimento. Não bloqueie a ventilação do instrumento, cobrindo-o com artigos como cortinas, toalhas de mesa ou jornais
O transformador é utilizado para conectar e desconectar o artigo da principal fonte de energia. Certifique-se que a ficha é facilmente acessível e que o artigo está devidamente ligado à corrente se detectar alguma anomalia com o funcionamento

VÝSTRAHA!

SK

Neotvárajte kryt. Vo vnútri nie sú žiadne súčasti, ktoré sú opraviteľné užívateľom. S požiadavkou na servis sa obráťte na kvalifikované servisné stredisko.
Nevytavujte produkt do blízkosti akéhokoľvek tepelného zdroja ako napr. radiátora, alebo do kontaktu so snečným žiarením, nadmerným prášným prostredím, mechanickým vibráciám alebo šokom.
Produkt nesmie prísť do kontaktu s vodou a žiadny objekt naplnený vodou, ako napr. váza, nesmie byť umiestnený na produkt.
Žiadne výrobky s otvoreným ohňom, ako napr. sviečky, by nemali byť umiestnené na produkt.
Umožnite dostatočnú cirkuláciu vzduchu a zabráňte obštrukcii ventilačných otvorov (ak sú prítomné) kvôli prevencii vnútorného prehrievania. Ventilácia nesmie byť narušená prekrytím zariadenia výrobkami ako napr. noviny, kuchynské utierky, záclony a pod.
Hlavný kábel umožňuje odpojiť zariadenie od elektriny. Uistite sa, že hlavný napájací výstup je ľahko dostupný a odpojte kábel ak zaznamenáte akúkoľvek abnormálnu na zariadení.

OPOZORILO!

SI

Ne odpirajte pokrova. V notranjosti ni nobenih delov, ki jih uporabnik lahko sam popravlja. Popravilo prepustite usposobljenemu osebi
Ne postavljajte izdelka na lokaciji v bližini vira toplote, kot je radiator, ali na območje, ki je izpostavljeno neposredni sončni svetlobi, pretiranem prahu, mehanskim tresljajem ali udarcem
Izdelek ne sme biti izpostavljen kapljanju ali brizganju in nobeni predmeti, napolnjeni z vodo, kot so vaze, se ne smejo postaviti na izdelek
Nobenega od virov odprtge ognja, kot so vžgane sveče, se ne sme postavljati na izdelek
Zagotovite zadostno kroženje zraka in umaknite ovire na odprtinah (če obstajajo), zaradi preprečevanja kopičenja notranje toplote. Ventilacija se ne sme ovirati s prekrivanjem naprave s predmeti, kot so časopisi, prti, zavese itn.
Omežni vtič se uporablja za izklop naprave iz električnega omrežja. Poskrbite, da je omrežna vtičnica zlahka dostopna in izvlecite vtičnik iz vtičnice, če opazite kakršno koli nepravilnost pri napravi.

¡ADVERTENCIA!

ES

No abra la tapa. No intente reparar el aparato usted mismo. Llévelo a reparar por personal calificado.
No coloque el aparato cerca de fuentes de calor excesivo o donde esté expuesto a luz solar directa, golpes, vibraciones o polvo.
Evite lugares expuestos a humedad. No ponga objetos llenos de líquidos en la superficie de este aparato.
No se deben colocar fuentes de llama desnuda, como velas encendidas, en la superficie de este aparato.
Mantenga suficiente espacio alrededor del aparato para permitir una ventilación adecuada. No obstruya o tape las aberturas con objetos como periódicos, manteles, cortinas, etc.
El enchufe se utiliza para desconectar el producto de la corriente. Si nota algún defecto, desconéctelo de la toma de corriente.

WARNING!

SE

Öppna ej locket. Inga användarvänliga delar inuti. För reparationer vänd er till kvalificerad servicepersonal
Ställ ej produkten vid en värmekälla t.ex element, i direkt solljus, damm, elektronisk vibration eller shock.
Produkten bör ej bli utsatt för droppande eller stänk och inga objekt fyllda med vätskor som t.ex vaser skall ställas på produkten.
Ingen källa till öppna flammor som t.ex tända ljus bör placeras på produkten.
Tillåt tillräcklig luftcirkulation och blockera ej eventuella ventiler för att undvika intern överhettning. Ventilen bör ej täckas av föremål såsom tidningar, dukar, gardiner etc.
Nätkontakten används för att koppla bort apparaten från eluttaget. Se till att eluttaget är lättåtkomligt och avlägsna kontakten från eluttaget om du upptäcker något abnormt med produkten.

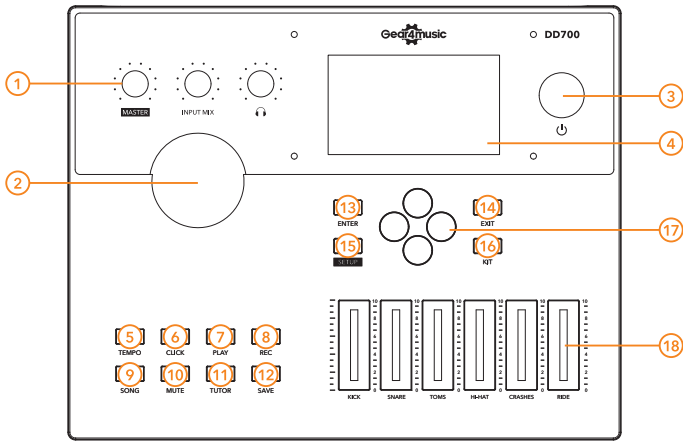
INTRODUCTION

Thank you for purchasing the DD700. To get the most out of your product, please read this manual carefully.

FEATURES

- Powerful digital drum kit perfect for practice, production and performance.
- Tweak every last nuance via the comprehensive module, 948 drum sounds and a wide range of variables.
- Comes complete with 52 preset kits, 20 user kits and 15 songs.
- Achieve record ready results thanks to the inclusion of a broad range of DSP effects.

FEATURES



FRONT PANEL

1. VOLUME

MASTER volume, AUX IN volume for external device, HEADPHONE volume.

2. EDITOR

You can change the parameters value in large steps with this knob.

3. POWER

You can turn the module power On/Off.

4. SCREEN

To display the name of the drum kit and menu systems.

5. TEMPO

Use this button to adjust tempo settings.

6. CLICK

Use this button to turn the metronome on or off.

7. PLAY

Play/Stop the song.

8. REC

Record your performance.

9. SONG

Use this button to edit settings related to the in-built songs.

10. MUTE

Use this button to mute drum sounds within a song.

11. TUTOR

Enter Tutor page to select practice menu.

12. SAVE

Save changes

13. ENTER

To confirm the modified parameter, or the item selected by cursor.

14. EXIT

Exit the current page on the screen.

15. MENU

Enter the setting page and set parameters on the sound module such as MIDI, Trigger and Percussion pad's sensitivity.

16. KIT

Use this button to return back to the main screen.

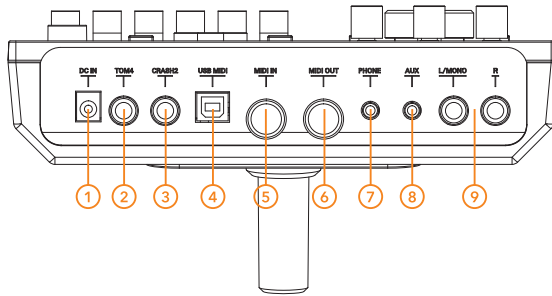
17. [Up/Down/Left/Right] button

Use these buttons to move the cursor on the screen.

18. PERCUSSION PAD FADERS

Use the faders to adjust the output volume of each pad.

FEATURES



REAR PANEL

1. DC-IN

To power up the drum kit, connect it to mains power here. Please note, only use the included PSU.

2. TOM4 Jack

This input allows you to add an additional tom pad to your set-up. Please note, this is not included.

3. CRASH2 Jack

This input allows you to add an additional cymbal pad to your set-up. Please note, this is not included.

4. USB MIDI Jack

Connect the drum kit to your computer via USB to take advantage of MIDI functionality.

5. MIDI IN Connector

Receiving MIDI signal or triggering sounds by external MIDI devices.

6. MIDI OUT Connect

Transmitting MIDI signal from the sound module to other external MIDI devices.

7. PHONE Jack

Connect Stereo headphones here. Please note sounds will still output from the OUTPUT Jacks when the headphone is connected.

8. AUX Jack

To connect your external audio devices. Audio signal will output on both LINE OUTPUT and PHONE OUT.

9. L/MONO, R Jack

Main audio output to connect to an amplifier or external audio equipment.

OVERVIEW

DRUM KIT SOUNDS

Press [KIT] button to enter into the main screen.

MAIN SCREEN - Button / Function

[LEFT / RIGHT] - Select function bar item.

[Clockwise / Counterclockwise Rotation] - Move to next / previous kit.

SELECT [LIST] and Press [ENTER] - Enter the edit page to set up the kit.

SELECT [INST] and Press [ENTER] - Enter the pad sound edit page to adjust the sounds.

SELECT [VOL] and Press [ENTER] - Enter the edit page to set up pad volume.

SELECT [OFF/X-S] and Press [ENTER] - Switch of X-Stick, X-S means on, OFF means off.



SELECTING THE DRUM KIT

From the main screen, select LIST, press [ENTER] button to enter into Drum Kit List.

Operation of Drum Kit List - Button / Function

[UP / DOWN] - Select the previous / next drum set.

[LEFT / RIGHT] - Select function bar options.

SELECT [KIT] and Press [ENTER] - Switch between preset and user kit.

SELECT [DEL] and Press [ENTER] - Delete current kit (Preset kit cannot be deleted).

SELECT [NEW] and Press [ENTER] - New kit, current kit would be copied.

SELECT [EDIT] and Press [ENTER] - Enter drum kit edit page and adjust your kit setting.



CUSTOMIZING A DRUM KIT

From the drum kit list screen, select EDIT, and press [ENTER] button to enter into Drum Kit Editing.

Operation of Drum Kit Editing - Button / Function

Select NAME and Press [ENTER] - Rename the current drum kit.

Select BACK and Press [ENTER] - Back to previous screen.



OVERVIEW

RENAME A DRUM KIT

From the drum kit list screen, select NEW, and press [ENTER] button to enter into Drum kit rename page. At this page, select NAME and press [ENTER] button to rename your drum kit.

Operation of Rename - Button / Function

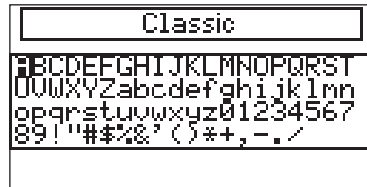
[Clockwise / Counterclockwise Rotation] - Select character.

[ENTER] - Determines current selected character.

[LEFT] - Delete the last character of the kit name.

[UP / DOWN / RIGHT] - Adjust the position of the cursor.

[SAVE] - Save current kit name.



INSTRUMENT SCREEN

From the main screen, select INST, and press [ENTER] button to enter into Instrument page. You can customize the instrument on each percussion pad.

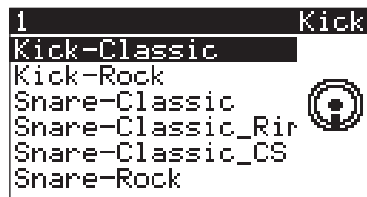
Operation of Instrument Screen - Button / Function

[UP / DOWN] - Select previous / next instrument.

[LEFT / RIGHT] - Select previous / next pad.

[ENTER] - Listen to current instrument.

[SAVE] - Save the current percussion pad. Only a single pad tone will be saved every time.



ADJUSTING THE PAD VOLUME

From the main screen, select VOL, and press [ENTER] button to enter into volume adjusting page.

Operation of volume adjustment - Button / Function

[LEFT / RIGHT] - Select previous / next pad.

[UP / DOWN] - Volume Up / Down.

[Clockwise / Counterclockwise Rotation] - Volume Up / Down.



OVERVIEW

SONG

Press [SONG] button to enter into the Song screen.

BPM - Beats Per Minute, the song's playback speed.

BEAT - There are THREE sections. 1: Beat per measure / 2: Accumulated beats / 3: Total beats of song.

Operation of Song Screen - Button / Function

[PLAY] - Play / Stop song.

[LEFT / RIGHT] - Select previous / next song.

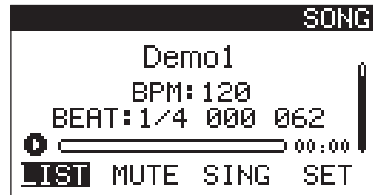
[UP / DOWN] - Volume Up / Down.

Select **LIST** and Press [ENTER] - Enter song list screen.

Select **MUTE** and Press [ENTER] - Enter Mute page and single part of song can be muted.

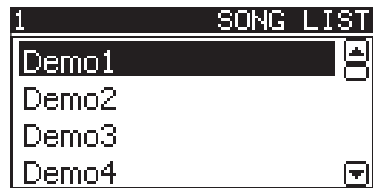
Select **SING** and Press [ENTER] - Select play mode (SING/SCYC/LCYC/BCYC).

Select **SET** and Press [ENTER] - Enter song setting screen.



SONG LIST SCREEN

From the song screen, select LIST, and press [ENTER] button to enter into Song List page. Press [ENTER] button to play the selected song then back to previous screen.



MUTE SCREEN

From the song screen, select MUTE, and press [ENTER] button to enter into Mute page.

Operation of Mute Screen - Button / Function

You can use cursor to select 4 different items and by pressing [ENTER] to switch On and Off.



OVERVIEW

SONG SETTING SCREEN

From the song screen, select SET, and press [ENTER] button to enter the Song Setting page. Press [SAVE] button to save the setting and exit. Or press [EXIT] button to exit without saving changes.

Song settings parameter and description:

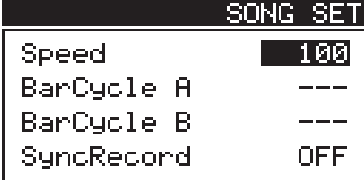
Speed - Playback speed setting.

BarCycle A - The starting point of the measure of the cycle play.

BarCycle B - The ending point of the measure of the cycle play.

SyncRecord - Use this function to record along with the current song.

*Function of Speed; BarCycle A & B for MIDI file song (present) ONLY.



SONG SET	
Speed	100
BarCycle A	---
BarCycle B	---
SyncRecord	OFF

RECORDING FUNCTION

Press [REC] button to enter into the recording screen.

Operation of Recording Screen - Button / Function [REC] - Upon recording screen, press [REC] to start / pause recording.

[Clockwise / Counterclockwise Rotation] - Move to previous / next recording song.

Select LIST and Press [ENTER] - Open recording file, except the recording condition.

Select PLAY and Press [ENTER] - Play / Pause recording file, except the recording condition.

Select UNDO and Press [ENTER] - Cancel the recording and discard the data.

Select SAVE and Press [ENTER] - Save record file.



RECORDING

From the recording page, press [REC] button to start recording. There will be 3 seconds count down before the recording starts.

OVERVIEW

RECORDING WITH A SONG

To do the synchronised recording, go to the song setting page to select the recording synchronised play switch.

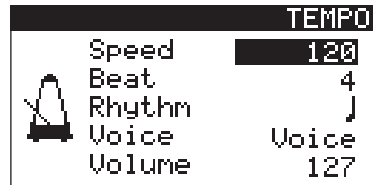
From the recording page, press [REC] button to start recording. There will be 3 seconds count down before the recording starts.



TEMPO FUNCTION

Press [TEMPO] button to enter into the tempo screen.

Operation of Tempo Screen – Button / Function
[CLICK] – On/Off Tempo
[LEFT / RIGHT] – Edit parameter of selected options.
[UP / DOWN] – Edit parameter of selected options.
[Clockwise / Counterclockwise Rotation] – Edit the parameter of select option.



TEMPO PARAMATER

SPEED – 20-260 (BPM), tempo speed/beats per minute

BEAT – 1-9, notes for beat, beat per measure

RHYTHM – 4 Types, rhythm of the beat

VOICE – 6 Types, the sound of metronome

VOLUME – 0-127, volume of the metronome

SOUND MODULE SETTING

Press [MENU] button to enter into the SETUP page.

Operation of SETUP page:

1. Select TRIG and press [ENTER] to enter TRIGGER Setting page.
2. Select MIDI and press [ENTER] to enter MIDI Setting page.
3. Select MIX and press [ENTER] to enter MIX Setting page.
4. Select EFF and press [ENTER] to enter AUDIO Setting page.
5. Select UTIL and press [ENTER] to enter SYSTEM UTILITY Setting page.



OVERVIEW

TRIGGER SETTING

From the Setting page, select TRIG and press [ENTER] to enter Trigger setting page.

Operation of Trigger Screen - Button / Function
[LEFT / RIGHT] - Select previous / next pad.
[UP / DOWN] - Select previous / next parameter.
[Clockwise / Counterclockwise Rotation] - Edit selected parameter.

Kick	TRIG
Sensitivity	0
Threshold	0
Curve	LINEAR
Dynamic Range	0
Scan Time	0.0ms

TRIGGER PARAMETER

PARAMETER	VALUE	DESCRIPTION
SENSITIVITY	0 - 31	The larger the value, the higher the sensitivity. With high sensitivity a light hit will produce a loud sound. With low sensitivity, a hard hit will produce a quiet sound. Try each setting and see which feels best for your playing style.
THRESHOLD	0 - 31	Allows you to add a noise gate to the drum pads. Only hits above the threshold level will make a sound, if set to a medium setting then only hard hits will produce a sound. Try out this setting and adjust to your personal preference.
CURVE		Used to control the relationship between playing strength and volume of a drum pad. Try each setting and see which feels best for your playing style.
	LINEAR	Standard setting, playing strength linked evenly with pad volume. Light hit = soft Sound, medium hit = medium sound, hard hit = loud sound.
	EXP1 / EXP2	Output is quicker to get louder whilst playing. EXP2 is more noticeable than EXP1.
	LOG1 / LOG2	Output is slower to get louder, keeping your playing at a lower volume for a longer.
	SPLINE	Pads are very quick to get loud.
LOUD1 / LOUD2	Pads have the quiet hits removed; hits are consistently loud.	
DR	0 - 9	Adjusts the overall dynamic range of the kit. When set to a low value, the kit is only capable of producing loud sounds. When set to 9 you have the ability to play all volumes.
SCAN TIME	0 - 40 (ms)	Specifies the detection time of the signal from when you hit the pad.
RETRIG LEVEL	0 - 16	Setting used to prevent unwanted retriggering. When using external drum triggers, occasionally they can interpret a sample fading out as a new hit and replay the sound. Adjust this setting to remove this issue.
MASK TIME	0 - 64 (ms)	Used to prevent double triggering. When playing a pad, sometimes it can be hit twice accidentally and play a second, unintended note. Adjust this setting if you are experience problems with accidental ghost notes.
AntiCross	1 - 80	Setting used to prevent cross talk between pads, this is when hitting one pad causes another pad to sound. In most cases you prevent cross talk by moving the pads further way from each and making sure they are not overtightening to the frame. Increase the setting until cross talk is eliminated.
Rim Gain	0 - 8.0	Same as sensitivity, the higher the value - the more sensitive the rim of a pad will be.
Head/Rim Adj	0 - 80	When you hit a drumhead hard, you sometimes hear the rim of the drum being triggered. Increasing this setting makes the rim less sensitive, eliminating the issue.
Xstick Adj	-9 - +9	Set the strike strength of cross stick and open stick. When setting is "+", the sound of cross stick is still heard even hitting hard.
Pedal HH Sens	-5 - +5	Adjust the sensibility of closed hi-hat and foot splash sound. When setting is "+", even if you gently press the pedal, it will make a loud sound.

OVERVIEW

MIDI SETTING

From the setting page, select MIDI and press [ENTER] to enter MIDI screen. Please NOTE that the numbers of the drums are non-adjustable parameter.

Operation of MIDI Screen - Button / Function
[LEFT / RIGHT] - Edit parameter.
[UP / DOWN] - Move to previous / next parameter.
[Clockwise / Counterclockwise Rotation] - Edit selected parameter.

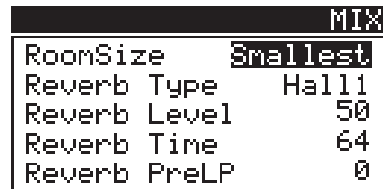
MIDI PARAMETER

PARAMETER	VALUE	DESCRIPTION
Channel	1 - 16	Set the MIDI channel number.
Auto Trace	ON/OFF	With Auto Trace activated, hitting a drum will bring up its settings on the module display. For example, hitting the snare with this mode on will bring up the snare drum settings on the display.
Retransmit	ON/OFF	Activates or deactivates the USB-MIDI retransmit function.
System Real	ON/OFF	For advanced users, controls system real time messages. These messages are a way of transferring information via MIDI such as MIDI clock, start, stop, etc.
MIDI OUT	ON/OFF	Activates or deactivates the MIDI output.
MIDI IN	ON/OFF	Activates or deactivates the MIDI input.
USB-MIDI OUT	ON/OFF	Activates or deactivates the USB-MIDI output.
USB-MIDI IN	ON/OFF	Activates or deactivates the USB-MIDI input.

MIX SETTING

From the setting page, select MIX and press [ENTER] to enter MIX screen.

Operation of MIX Screen - Button / Function
[LEFT / RIGHT] - Edit parameter.
[UP / DOWN] - Select previous / next parameter.
[Clockwise / Counterclockwise Rotation] - Edit selected parameter.



MIX	
RoomSize	Smallest
Reverb Type	Hall1
Reverb Level	50
Reverb Time	64
Reverb PreLP	0

OVERVIEW

MIX PARAMETER

PARAMETER	VALUE	DESCRIPTION
RoomSize	5	Adjusts the size of the room simulation, 5 different choices.
Reverb Type	7	Choose between 5 different kinds of reverb.
Reverb Level	0 - 127	Controls the overall reverb volume. 0 = Low - 127 = Maximum.
Reverb Time	0 - 127	Controls the overall length of reverb. 0 = Short - 127 = Maximum.
Reverb PreLP	0 - 7	Acts as a low pass filter for reverb. The higher the value, the fewer treble frequencies are heard in the reverb.
Equalizer	ON/OFF	Turn the equaliser ON or OFF.
EQLowGain	-12dB - +12dB	Adjust amount of bass frequencies boosted.
EQHighGain	-12dB - +12dB	Adjust amount of treble frequencies boosted.
EQLowFreq	40Hz - 1KHz	Adjusts which frequency is adjusted by the low gain setting.
EQHighFreq	900Hz - 5KHz	Adjusts which frequency is adjusted by the high gain setting.

EFFECT SETTING

From the setting page, select EFF and press [ENTER] to enter EFF screen.

Operation of EFFECT Screen - Button / Function
[LEFT / RIGHT] - Select previous / next pad.
[UP / DOWN] - Select previous / next parameter.
[Clockwise / Counterclockwise Rotation] - Edit selected parameter.

Kick	EFF
Coarse	0
Fine	0
Tone	64
Pan	0
Decay	64

EFFECT PARAMETER

PARAMETER	VALUE	DESCRIPTION
Coarse	-24 - +24	Operates as a very wide EQ adjustment on the kit, this option adjusts the overall tone of the drum kit.
Fine	0 - 127	Operates as a very narrow EQ adjustment on the kit, this option adjusts the overall tone of the drum kit.
Tone	0 - 127	Simplified EQ settings for the drum kit. A low value emphasises bass frequencies, a high value emphasises treble frequencies.
Pan	-63 - +63	Position of the pads sound in your headphones, 0 = Left - 127 = Right.
Decay	0 - 127	Adjust the sounds decay level on the drum kit, small valve will be decay faster, high valve will decay slowly.
Reverb	0 - 127	Sets the amount of reverb on a pad. With higher value, more reverb effect is audible.

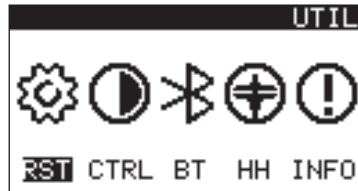
OVERVIEW

SYSTEM SETTING

From the setting page, select UTIL and press [ENTER] to enter SYSTEM SETTING screen.

Operation of SYSTEM SETTING Screen - Button / Function

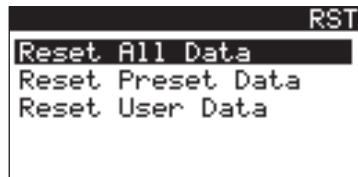
1. Select RST and press [ENTER] to enter RESET page.
2. Select CTRL and press [ENTER] to enter OTHER CONTROL page.
3. Select BT and press [ENTER] to enter BLUETOOTH page.
4. Select HH and press [ENTER] to enter HI-HAT page.
5. Select INFO and press [ENTER] to enter VERSION INFORMATION page.



SYSTEM RESET SETTING

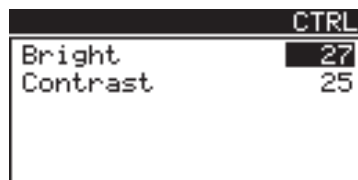
From the SYSTEM SETTING page, select RST and press [ENTER] to enter SYSTEM RESET screen.

1. Reset All Data - Will reset all the data and restore the factory state.
2. Reset Preset Data - Will only reset the original data of the sound module and retain user data.
3. Reset User Data - Will only reset user data such as user drum set or recording files.



OTHER CONTROL SETTING

From the SYSTEM SETTING page, select CTRL and press [ENTER] to enter OTHER CONTROL screen. You can adjust the LCD Screen Brightness and Contrast here.



OVERVIEW

BLUETOOTH SETTING

From the SYSTEM SETTING page, select BT and press [ENTER] to enter BLUETOOTH screen. You can select BT Name, check BT status or disconnect the connection here.

BT Name

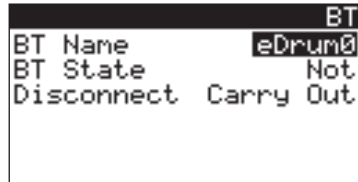
You can set your DD700 Drum Module Bluetooth Name here from eDrum1 to eDrum9. You can find your selected name on your Bluetooth device for your connection.

BT State

When you connected your Bluetooth device to DD700, you will see "Yes" here. If you disconnected, you will see "Not" here.

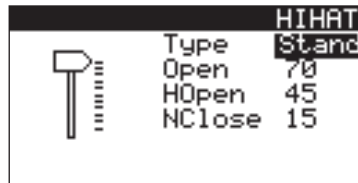
Disconnect

You can disconnect your Bluetooth device anytime, move the cursor to "Carry Out" and press [ENTER] button to disconnect immediately.



HI-HAT SETTING

From the SYSTEM SETTING page, select HH and press [ENTER] to enter HI-HAT screen. You can select your HI-HAT Control type by Pedal or Hi-Hat Stand and Pads. You can also modify you HI-HAT Open, Close and Nearly Close sensitivity parameter here. Valve from 0 - 127.



INFORMATION PAGE

From the SYSTEM SETTING page, select INFO and press [ENTER] to enter INFORMATION screen. You can check you Sound Module system info or serial no. on this page.

OVERVIEW

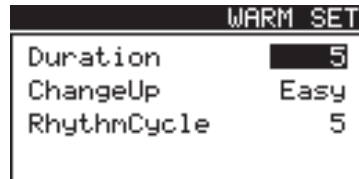
TUTOR FUNCTION

Press [TUTOR] button to enter into the TUTOR page. There are TWO mode for your drum practice.



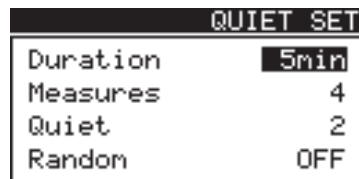
WARM Mode

In the Warmup practice page, you can adjust the tempo setting. Go "SET" and press [ENTER] to the WARM SET page, you can select different duration, difficulty and rhythm cycle for your practice.



QUIET MODE

In the Quiet practice page, press "TEMPO" and then [ENTER] to set up the tempo speed, beats, rhythm, metronome voice and volume. Press "SET" and then [ENTER] to set up the Duration time, Measure no., Quiet numbers per cycle or Random Quiet Mode.



APPENDIX

HOME interface	
Date Store Err	Data storage error. After the audio source version is updated, a data error occurs on the device. Enter the RST screen and reset all data.
No User Kit	No User Kit
HOME LIST interface	
Can not del preset kit	Cannot delete preset kit.
Kit Count OverFlow	You can have up to 20 User Kits. The number of user kits is full, please check your list and delete unwanted kits to release the space.
User kit is removed	User drum kit deleted successfully.
Failed to remove	User drum kit delete failed. Please restart the sound module and operate again or reset the user data.
HOME INST interface	
This Pad Saved	The current selected pad sound has been saved.
REC interface	
No File	No audio files.
REC LIST interface	
Delete Err	Failed to delete. Restart the sound module, try again. Or reset the user data.
SONG interface	
No File	No song files.
Play Err	Song playback error. There may be a problem with the USB Disk song file or switching song too fast.
RST interface	
Reset Complete	The reset was successful.
Reset Err	Reset error. Please try again or restart the sound module and reset.

APPENDIX

PRESET SONG LIST

NUM	NAME	NUM	NAME	NUM	NAME
1	Demo1	6	Demo6	11	Demo11
2	Demo2	7	Demo7	12	Demo12
3	Demo3	8	Demo8	13	Demo13
4	Demo4	9	Demo9	14	Demo14
5	Demo5	10	Demo10	15	Demo15

PRESET KIT LIST

NUM	NAME	NUM	NAME	NUM	NAME
1	Classic	19	Jungle2	37	Absynth-1
2	Rock	20	Fiesta1	38	Absynth-2
3	Rock1	21	Fiesta2	39	Afroshop-1
4	Rock2	22	Brush1	40	Afroshop-2
5	Rock3	23	Electron-1	41	Arena-1
6	Rock4	24	Electron-2	42	Argon-1
7	Rock5	25	Electron-3	43	bottlepoppin-1
8	Rock6	26	Electron-4	44	bottlepoppin-2
9	Pop1	27	Electron-5	45	bouncin-1
10	Pop2	28	Electron-6	46	dakeat-1
11	Pop3	29	Electron-7	47	Ganjia
12	Pop4	30	Electron-8	48	Jack-1
13	Funk1	31	Electron-9	49	Jack-2
14	Funk2	32	Electron-10	50	Jack-3
15	Jazz1	33	Electron-11	51	Concrete
16	Jazz2	34	Electron-12	52	Fix
17	Reggae1	35	Alphabetical		
18	Jungle1	36	Percussion-1		

APPENDIX

PRESET VOICE LIST

NUM	NAME	NUM	NAME	NUM	NAME
1	Kick-Classic	38	Ride-2.A_20-Edge	75	Kick-Pop-3-bright
2	Kick-Rock	39	Ride-2.A_20-Top	76	Kick-Pop-3-Medium
3	Snare-Classic	40	Ride-Z.K_20-Bell	77	Kick-Pop-3-Soft
4	Snare-Classic_Rim	41	Ride-Z.K_20-Edge	78	Kick-Pop-3-XL
5	Snare-Classic_CS	42	Ride-Z.K_20-Top	79	Kick-Pop-4-Bright
6	Snare-Rock	43	HH-Closed-2.A_14-Edge	80	Kick-Pop-4-Deep
7	Snare-Rock_CS	44	HH-Closed-2.A_14-Top	81	Kick-Pop-4-Soft
8	Snare-Rock_Rim	45	HH-Half-2.A_14-Edge	82	Kick-Pop-4-XL
9	Tom1-Classic	46	HH-Half-2.A_14-Top	83	Kick-Pop-5
10	Tom1_Rim-Classic	47	HH-NearClosed-2.A_14-Edge	84	Kick-Vintage-1-long
11	Tom2-Classic	48	HH-NearClosed-2.A_14-Top	85	Kick-Vintage-2-released-Bright
12	Tom2_Rim-Classic	49	HH-Open-2.A_14-Edge	86	Kick-Vintage-2-released-Medium
13	Tom3-Classic	50	HH-Open-2.A_14-Top	87	Kick-Vintage-2-released-XL
14	Tom3_Rim-Classic	51	HH-Closed-2.K_14-Edge	88	Kick-Vintage-3-stuck-Bright
15	Tom1-Rock	52	HH-Closed-2.K_14-Top	89	Kick-Vintage-3-stuck-Bright-Comp
16	Tom1_Rim-Rock	53	HH-Half-2.K_14-Edge	90	Kick-Vintage-3-stuck-Deep
17	Tom2-Rock	54	HH-Half-2.K_14-Top	91	Kick-Vintage-3-stuck-Medium
18	Tom2_Rim-Rock	55	HH-NearClosed-2_K_14-Edge	92	Kick-Vintage-3-stuck-XL
19	Tom3-Rock	56	HH-NearClosed-2.K_14-Top	93	Kick-Metal-1-Bright
20	Tom3_Rim-Rock	57	HH-Open-2.K_14-Edge	94	Kick-Metal-1-Deep
21	Crash-2.A_16-Bell	58	HH-Open-2.K_14-Top	95	Kick-Metal-1-Medium
22	Crash-2.A_16-Edge	59	HH-Chick-B.M_14	96	Kick-Metal-1-XL
23	Crash-2.A_16-Top	60	HH-Closed-B.M_14-Edge	97	Kick-Metal-2
24	Crash-2.A_17-Bell	61	HH-Closed-B.M_14-Top	98	Kick-Metal-2-Dry
25	Crash-2.A_17-Edge	62	HH-Half-B.M_14-Edge	99	Kick-Metal-2-L
26	Crash-2.A_17-Top	63	HH-Half-B.M_14-Top	100	Kick-Metal-2-XL
27	Crash-2.A_18-Bell	64	HH-NearClosed-B.M_14-Edge	101	Kick-Jazz-1-Bright
28	Crash-2.A_18-Edge	65	HH-NearClosed-B.M_14-Top	102	Kick-Jazz-1-Deep
29	Crash-2.A_18-Top	66	HH-Open-B.M_14-Edge	103	Kick-Jazz-1-Soft
30	Crash-2.K_16-Bell	67	HH-Open-B.M_14-Top	104	Kick-Jazz-1-XL
31	Crash-2.K_16-Edge	68	Kick-Rock-1	105	Kick-Jungle-1
32	Crash-2.K_16-Top	69	Kick-Rock-2	106	Kick-Jungle-2-Bright
33	Crash-2.K_18-Bell	70	Kick-Pop-1-bright	107	Kick-Jungle-2-Comp
34	Crash-2.K_18-Edge	71	Kick-Pop-1-medium	108	Kick-Jungle-2-Comp-Bright
35	Crash-2.K_18-Top	72	Kick-Pop-1-Soft	109	Kick-Jungle-2-Comp-Medium
36	Splash-2.K_10	73	Kick-Pop-1-XL	110	Kick-Jungle-2-Comp-XL
37	Ride-2.A_20-Bell	74	Kick-Pop-2	111	Kick-Jungle-2-Medium

APPENDIX

PRESET VOICE LIST

NUM	NAME	NUM	NAME	NUM	NAME
112	Kick-Jungle-2-XL	149	Kick Arena 6	186	Kick Dakeat 7
113	Kick-Jungle-3-Bright	150	Kick Arena 7	187	Kick Dakeat 8
114	Kick-Jungle-3-Deep	151	Kick Arena 8	188	Kick Ganja 1
115	Kick-Jungle-3-Medium	152	Kick Argon 1	189	Kick Ganja 2
116	Kick-Jungle-3-XL	153	Kick Argon 2	190	Kick Ganja 3
117	Kick-Electro8-1	154	Kick Argon 3	191	Kick Ganja4
118	Kick-Electro8-Long	155	Kick Argon 4	192	Kick Ganja 5
119	Kick-Electro8-Long-Soft	156	Kick Argon 5	193	Kick Ganja 6
120	Kick-Electro8-2	157	Kick Argon 6	194	Kick Ganja 7
121	Kick-Electro8-Short	158	Kick BottlePoppin 1	195	Kick Jack 1
122	Kick-Electro9-1	159	Kick BottlePoppin 2	196	Kick Jack 2
123	Kick-Electro9-1 L	160	Kick BottlePoppin 4	197	Kick Jack 3
124	Kick-Electro9-1 V	161	Kick BottlePoppin 5	198	Kick Jack4
125	Kick-Electro9-2	162	Kick BottlePoppin 6	199	Kick Jack 5
126	Kick-Electro9-2L	163	Kick BottlePoppin 7	200	Snare-Rock-1
127	Kick-Electro9-2V	164	Kick BottlePoppin 8	201	Snare-Rock-1-Rimshot
128	Kick-Electro5-1	165	Kick Bouncin 1	202	Snare-Rock-1-Cross-Stick
129	Kick-Electro5-deep	166	Kick Bouncin 2	203	Snare-Rock-2-S
130	Kick-Electro5-short	167	Kick Bouncin 3	204	Snare-Rock-1-Rimshot2
131	Kick-Electro5-V	168	Kick Bouncin 4	205	Snare-Rock-1-Cross-Stick2
132	Alphabetical_Pop_Kick	169	Kick Bouncin 5	206	Snare-Rock-2-S-snappy
133	Kick Absynth 1	170	Kick Bouncin 6	207	Snare-Rock-1-Rimshot3
134	Kick Absynth 2 V1	171	Kick Bouncin 7	208	Snare-Rock-1-Cross-Stick3
135	Kick Absynth 4	172	Kick Bouncin 8	209	Snare-Rock-2-S-mezzo
136	Kick Absynth 5	173	Kick Concrete 1	210	Snare-Rock-2-RimShot
137	Kick Absynth 6	174	Kick Concrete 2	211	Snare-Rock-2-Cross-Stick
138	Kick Absynth 7	175	Kick Concrete 3	212	Snare-Rock-3
139	Kick Absynth 8	176	Kick Concrete 4	213	Snare-Rock-2-XL
140	Kick Absynth 9	177	Kick Concrete 5	214	Snare-Rock-1-Rimshot-X
141	Kick AfroShop 1	178	Kick Concrete 6	215	Snare-Rock-1-Rimshot4
142	Kick AfroShop 2	179	Kick Concrete 7	216	Snare-Rock-2-RimShot-X
143	Kick AfroShop 3	180	Kick Dakeat 1	217	Snare-Rock-2-RimShot2-X
144	Kick Arena 1	181	Kick Dakeat 2	218	Snare-Rock-2-RimShot3-X
145	Kick Arena 2	182	Kick Dakeat 3	219	Snare-Rock-3-RimShot
146	Kick Arena 3	183	Kick Dakeat 4 V1	220	Snare-Pop-1
147	Kick Arena 4	184	Kick Dakeat 5	221	Snare-Pop-1-Hi-rimshot
148	Kick Arena 5	185	Kick Dakeat 6	222	Snare-Pop-2-Cross-Stick

APPENDIX

PRESET VOICE LIST

NUM	NAME	NUM	NAME	NUM	NAME
223	Snare-Pop-3	260	Snare-Jazz-1-z2-XL	297	Alphabetical_Pop_Snare_S
224	Snare-Pop-1-Hi-Rimshot-2	261	Snare-Jazz-1-rimshot-light2	298	Alphabetical_Pop_Snare_R
225	Snare-Pop-2-Cross-Stick-2	262	Snare-Jazz-1-rimshot-full	299	Alphabetical_Pop_Snare_Clap
226	Snare-Pop-1-Lo-Rimshot	263	Snare-Jazz-1-rimshot-light-XL	300	Snare Absynth 1
227	Snare-Pop-1-Lo-Rimshot-2	264	Snare-Brush-1	301	Snare Absynth 2
228	Snare-Pop-1-Lo-Rimshot-3	265	Snare-Brush-1-open	302	Snare Absynth 3
229	Snare-Pop-1-Lo-rimshot-XL	266	Snare-Brush-2	303	Snare Absynth 4
230	Snare-Vintage-1	267	Snare-Brush-1-Rimshot	304	Snare Absynth 5
231	Snare-Vintage-1-rimshot-X	268	Snare-Brush-1-open-XL	305	Snare Absynth 6
232	Snare-Vintage-1-CrossStick	269	Snare-Brush-1-XL	306	Snare Absynth 7
233	Snare-Vintage-1-z2	270	Snare-Brush-2-XL	307	Snare Absynth 8
234	Snare-Vintage-1-rimshot	271	Snare-Fiesta-1-CrossStick	308	Snare Absynth 9
235	Snare-Metal-1-Open	272	Snare-Fiesta-1	309	Snare Absynth 10
236	Snare-Metal-2-Op-rimshot-XL	273	Snare-Fiesta-1-rimshot	310	Snare Absynth 11
237	Snare-Metal-2-Open2	274	Snare-Fiesta-2	311	Snare AfroShop 1
238	Snare-Metal-2-Open-Rimshot	275	Snare-Fiesta-2-rimshot	312	Snare AfroShop 2
239	Snare-Metal-3-rods-S	276	Snare-Fiesta-2-Rimshot2	313	Snare AfroShop 3
240	Snare-Metal-3-Rods-Rimshot	277	Snare-Fiesta-1-rimshot2	314	Snare Arena 1
241	Snare-Metal-4-XL	278	Snare-Jungle-1	315	Snare Arena 2
242	Snare-Metal-1-Open-Rimshot	279	Snare-Jungle-1-Rimshot	316	Snare Arena 3
243	Snare-Metal-1-rods-z3-XL	280	Snare-Jungle-2	317	Snare Arena 4
244	Snare-Metal-4-RimShot	281	Snare-Jungle-2-Rimshot	318	Snare Arena 5
245	Snare-Metal-1-Open-Compact	282	Snare-Jungle-3	319	Snare Arena 6
246	Snare-Metal-2-Op-rimshot	283	Snare-Jungle-3-Rimshot	320	Snare Argon 1
247	Snare-Metal-1-Op-XL	284	Snare-Jungle-2-Rimshot2	321	Snare Argon 2 V1
248	Snare-Metal-3-Open-Rods	285	Snare-Jungle-1-Rimshot-XL	322	Snare Argon 3 V1
249	Snare-Metal-3-rods-XL	286	Snare-Jungle-1-Rimshot2	323	Snare Argon 4
250	Snare-Metal-4-Open-S	287	Snare-Electro5-1	324	Snare Argon 5
251	Snare-Metal-4-S	288	Snare-Electro5-2	325	Snare Argon 6 V1
252	Snare-Jazz-1	289	Snare-Electro5-3	326	Snare Argon 7
253	Snare-Jazz-1-rimshot-light	290	Snare-Electro8-3	327	Snare Argon 8
254	Snare-Jazz-1-cross-stick	291	Snare-Electro8-RS	328	Snare Argon 9
255	Snare-Jazz-1-Snappy	292	Snare-Electro9-1	329	Snare Argon 10
256	Snare-Jazz-1-rimshot-full-XL	293	Snare-Electro9-2	330	Snare Argon 11
257	Snare-Jazz-1-cross-stick-XL	294	Snare-Electro9-RS	331	Snare Argon 12
258	Snare-Jazz-1-XL	295	Clap-Electro8	332	Noise Argon 1
259	Snare-Jazz-1-rimshot-full2	296	Clap-Electro9	333	Noise Argon 2

APPENDIX

PRESET VOICE LIST

NUM	NAME	NUM	NAME	NUM	NAME
334	Noise Argon 3	371	Snare Jack 1	408	Tom-Pop1-1-Rim
335	Rim Argon	372	Snare Jack2	409	Tom-Pop1-2-Rim
336	Rimshot Argon	373	Snare Jack 3	410	Tom-Pop1-3-Rim
337	Snare BottlePoppin 1	374	Snare Jack4	411	Tom-Vintage1-1
338	Snare BottlePoppin 2	375	Snare Jack 5	412	Tom-Vintage1-1-Rim-RLS
339	Snare BottlePoppin 3	376	Snare Jack6	413	Tom-Vintage1-2
340	Snare BottlePoppin 4	377	Snare Jack 7	414	Tom-Vintage1-2-Rim-RLS
341	Snare BottlePoppin 5	378	Tom-Rock1-1	415	Tom-Vintage1-3
342	Snare BottlePoppin 6	379	Tom-Rock1-1-Rim	416	Tom-Vintage1-3-Rim-RLS
343	Snare BottlePoppin 7	380	Tom-Rock1-2	417	Tom-Vintage1-1-Rim
344	Snare BottlePoppin 8	381	Tom-Rock1-2-Rim	418	Tom-Vintage1-2-Rim
345	Snare Bouncin 1	382	Tom-Rock1-3	419	Tom-Vintage1-3-Rim
346	Snare Bouncin 2	383	Tom-Rock1-3-Rim	420	Tom-Metal1-1-XL
347	Snare Bouncin 3	384	Tom-Rock1-1-XL	421	Tom-Metal1-1-Rim
348	Snare Bouncin 4	385	Tom-Rock1-1-Rim-RLS	422	Tom-Metal1-2-XL
349	Snare Bouncin 5	386	Tom-Rock1-2-XL	423	Tom-Metal1-2-Rim
350	Snare Bouncin 6	387	Tom-Rock1-2-Rim-RLS	424	Tom-Metal1-3-XL
351	Snare Bouncin 7	388	Tom-Rock1-3-XL	425	Tom-Metal1-3-Rim
352	Snare Bouncin 8	389	Tom-Rock1-3-Rim-RLS	426	Tom-Metal2-1-XL
353	Snare Dakeat 1	390	Tom-Rock1-EQ-1	427	Tom-Metal2-1-Rim
354	Snare Dakeat 2	391	Tom-Rock1-EQ-1-Rim	428	Tom-Metal2-2-XL
355	Snare Dakeat 3	392	Tom-Rock1-EQ-2	429	Tom-Metal2-2-Rim
356	Snare Dakeat 4	393	Tom-Rock1-EQ-2-Rim	430	Tom-Metal2-3-XL
357	Snare Dakeat 5	394	Tom-Rock1-EQ-3	431	Tom-Metal2-3-Rim
358	Snare Dakeat 7	395	Tom-Rock1 -EQ-3-Rim	432	Tom-Metal2-4-XL
359	Snare Dakeat 8	396	Tom-Rock1-EQ-1-XL	433	Tom-Metal2-4-Rim
360	Snare Dakeat 9	397	Tom-Rock1 -EQ-1-Rim-RLS	434	Tom-Metal1-1-Rim-RLS
361	Snare Concrete 1	398	Tom-Rock1-EQ-2-XL	435	Tom-Metal1-2-Rim-RLS
362	Snare Concrete 2	399	Tom-Rock1-EQ-2-Rim-RLS	436	Tom-Metal1-3-Rim-RLS
363	Snare Concrete 3	400	Tom-Rock1-EQ-3-XL	437	Tom-Metal2-1-Rim-RLS
364	Snare Concrete 4	401	Tom-Rock1 -EQ-3-Rim-RLS	438	Tom-Metal2-2-Rim-RLS
365	Snare Concrete 5	402	Tom-Pop1-1	439	Tom-Metal2-3-Rim-RLS
366	Snare Concrete 6	403	Tom-Pop1-1-Rim-RLS	440	Tom-Metal2-4-Rim-RLS
367	Snare Concrete 7	404	Tom-Pop1-2	441	Tom-Jazz1-1-XL
368	Snare Concrete 8	405	Tom-Pop1-2-Rim-RLS	442	Tom-Jazz1-1-Rim
369	Snare Concrete 9	406	Tom-Pop1-3	443	Tom-Jazz2-1-XL
370	Snare Concrete 10	407	Tom-Pop1-3-Rim-RLS	444	Tom-Jazz2-1-Rim

APPENDIX

PRESET VOICE LIST

NUM	NAME	NUM	NAME	NUM	NAME
445	Tom-Jazz1-1-Rim-RLS	482	Pere Absynth 6	519	Tom BottlePoppin 8
446	Tom-Jazz2-1-Rim-RLS	483	Pere Absynth 7	520	Tom Bouncin 1
447	Tom-Brush1-1-XL	484	Tom Absynth 1	521	Tom Bouncin 2
448	Tom-Bass-Brush 1-XL	485	Tom Absynth 2	522	Tom Bouncin 3
449	Tom-Fiesta-1	486	Tom Absynth 3	523	Tom Bouncin 4
450	Tom-Fiesta-1-Rim	487	Tom Absynth 4	524	Tom Dakeat2
451	Tom-Fiesta-2	488	Tom Absynth 5	525	Tom Dakeat3
452	Tom-Fiesta-2-Rim	489	Tom Absynth 6	526	Pere Jack 1
453	Tom-Fiesta-3	490	Tom Absynth 7	527	Pere Jack 2
454	Tom-Fiesta-3-Rim	491	Tom Absynth 8	528	Pere Jack 3
455	Tom-Fiesta-4	492	Tom Absynth 9	529	Pere Jack4
456	Tom-Fiesta-4-Rim	493	Djembe AfroShop 1	530	Pere Jack 5
457	Tom-Fiesta-1-Rim-RLS	494	Djembe AfroShop 2	531	Pere Jack 6
458	Tom-Fiesta-2-Rim-RLS	495	Djembe AfroShop 3	532	Pere Jack 7
459	Tom-Fiesta-3-Rim-RLS	496	Djembe AfroShop 5	533	Pere Jack 8
460	Tom-Fiesta-4-Rim-RLS	497	Djembe AfroShop 6	534	Pere Jack 9
461	Tom-Jungle1-1	498	Djembe AfroShop 7	535	Pere Jack 10
462	Tom-Jungle1-1-Rim	499	Djembe AfroShop 8	536	Lofill Jack 1
463	Tom-Jungle1-2	500	Djembe AfroShop 9	537	Lofill Jack 2
464	Tom-Jungle1-2-Rim	501	Dununba AfroShop 1	538	Pere Concrete 1
465	Tom-Jungle1-3	502	Dununba AfroShop 2	539	Pere Concrete 3
466	Tom-Jungle1-3-Rim	503	Dununba AfroShop 3	540	Shaker Concrete 1
467	Tom-Jungle1-1-Rim-RLS	504	Kenkeni AfroShop	541	Shaker Concrete 2
468	Tom-Jungle1-2-Rim-RLS	505	Krin AfroShop	542	Shaker Concrete 3
469	Tom-Jungle1-3-Rim-RLS	506	Sangba AfroShop 1	543	Ride_Rock-ping24-Shoulder
470	Tom-Electro1-1	507	Sangba AfroShop 3	544	Ride_Rock-ping24-Bell
471	Tom-Electro1-2	508	Shaker Arena 1	545	Ride_Rock-ping24-Edge
472	Tom-Electro1-3	509	Shaker Arena 2	546	Ride_Dark_20_Shoulder
473	Tom-Electro2-1	510	Shaker Arena 3	547	Ride_Rock-ping24-VeloBell
474	Tom-Electro2-2	511	Shaker Arena 4	548	Ride_Dark_20_Edge
475	Tom-Electro2-3	512	Tom BottlePoppin 1	549	Ride_Dark_20_Bell
476	Tom-Electro3	513	Tom BottlePoppin 2	550	Ride_Dark_20_VeloBell
477	Tom-Electro-Rim	514	Tom BottlePoppin 3	551	Ride-Rock-1-top
478	Tom-Electro3-Rim	515	Tom BottlePoppin 4	552	Ride-Rock-1-bell-XL
479	Pere Absynth 2	516	Tom BottlePoppin 5	553	Ride-Rock-1-bell-L
480	Pere Absynth 3	517	Tom BottlePoppin 6	554	Ride-Rock-1-bell
481	Pere Absynth 5	518	Tom BottlePoppin 7	555	Ride-Vintage-1-shoulder

APPENDIX

PRESET VOICE LIST

NUM	NAME	NUM	NAME	NUM	NAME
556	Ride-Vintage-1-Bell	593	Ride Glowstix4	630	Crash_Classic_CHB_H_Edge
557	Ride-Metal-1-shoulder	594	Ride Gong VS	631	Crash-Rock-1-edge
558	Ride-Metal-1-bell	595	RideBell GongV8	632	Crash-Rock-1-edge-XL
559	Ride-Jazz-1-top	596	Bell AfroShop1	633	Crash-Rock-2-edge
560	Ride-Jazz-1-bell	597	Bell AfroShop2	634	China-Vintage-1
561	Ride-Jazz-1-top-XL	598	Bell AfroShop3	635	Crash-Vintage-1-edge
562	Ride-Jazz-1-bell-XL	599	Bell AfroShop4	636	Crash-Vintage-2-edge
563	Ride-Jazz-2-top	600	Ride Arena 1	637	Crash-Vintage-3-edge
564	Ride-Jazz-2-bell	601	RideArena2	638	China-Metal-1
565	Ride-Jazz-2-top-XL	602	Ride Arena 3	639	Crash-Metal-2-edge
566	Ride-Jazz-2-bell-XL	603	Ride Neuron 1	640	China-Metal-1-XL
567	Ride-Jazz-1-top-L	604	Ride Neuron 2	641	Crash-Metal-2-edge-XL
568	Ride-Jazz-2-top2	605	RideBell Neuron	642	Crash-Metal-2-edge2
569	Ride-Jazz-2-top2-XL	606	Bongo Bouncin	643	Crash-Metal-3-edge
570	Ride-Brush-1-top	607	Ride Ganja	644	Crash-Metal-3-edge-XL
571	Ride-Brush-1-bell	608	Ride Orgami	645	Crash-Metal-3-edge2
572	Ride-Brush-1-top-XL	609	Ride Overtime	646	Crash-Metal-4-edge
573	Ride-Brush-1-bell-XL	610	Ride Rare 1	647	Crash-Metal-4-edge-XL
574	Ride-Brush-2-top-hard	611	Ride Rare 2	648	Crash-Jazz-1-edge
575	Ride-Brush-2-bell	612	Ride Shooter	649	Crash-Jazz-1-edge-XL
576	Ride-Brush-2-edge	613	Ride Sintheti	650	Crash-Jazz-1-edge2
577	Ride-Brush-2-top-Soft	614	Ride AlkaloidV1	651	Crash-Jungle-1-edge
578	Ride-Brush-2-top-XL	615	Ride AlkaloidV2	652	Crash-Jungle-2-edge
579	Ride-Fiesta-1-top	616	Ride AlkaloidV3	653	Crash-Jungle-3-edge
580	Ride-Fiesta-2-top	617	Ride AlkaloidV4	654	Crash-Jungle-4-splash-hi
581	Ride-Jungle-1-top	618	Ride AlkaloidV5	655	Crash-Jungle-4-splash-hi-XL
582	Ride-Jungle-1-bell	619	Ride AlkaloidV6	656	Crash-Jungle-4-splash-hi2
583	Ride-Jungle-2-shoulder	620	Ride Soulesque 1	657	Crash-Jungle-5-splash-hi-muted
584	Ride-Jungle-1-bell-EQ	621	Ride Soulesque 2	658	Crash-Jungle-5-splash-hi-muted-XL
585	Cymb 808L	622	RideX	659	Crash-Jungle-6-splash-side
586	Shaker-Electro8	623	Crash_Rock-V20-Shoulder	660	Crash-Jungle-6-splash-side-XL
587	Alphabetical_Pop_Ride_5	624	Crash_Rock-V20-Edge	661	Alphabetical_Pop_CRASH1_R
588	Alphabetical_Pop_Ride_R	625	Crash_Dark_C16_Shoulder	662	Alphabetical_Pop_CRASH1_S
589	Alphabetical_Pop_Ride_BELL	626	Crash_Dark_C16_Edge	663	Alphabetical_Pop_CRASH2_R
590	Ride Glowstix1	627	Crash_Dark_B18_Shoulder	664	Alphabetical_Pop_CRASH2_S
591	Ride Glowstix2	628	Crash_Dark_B18_Edge	665	Balaton AtroShop 1
592	Ride Glowstix3	629	Crash_Classic_CHB_H_Shoulder	666	Balaton AtroShop 2

APPENDIX

PRESET VOICE LIST

NUM	NAME	NUM	NAME	NUM	NAME
667	Balaton AtroShop 3	704	H H-Rock-Edge-closed	741	HH-Electro8-splash
668	Balaton AtroShop 4	705	HH-Rock-chick	742	OpenHH Absynth 1
669	Crash Arena 1	706	H H-Rock-splash	743	OpenHH Absynth 2
670	Crash Arena 2	707	H H-Brush-1-open-XL	744	OpenHH Absynth 3
671	Combo Argon	708	H H-Brush-1-open-X	745	ClosedHH Absynth 1
672	Crash Argon	709	H H-Brush-1-open	746	ClosedHH Absynth 2
673	Crash BottlePoppin 1	710	H H-Brush-1-half3	747	ClosedHH Absynth 3
674	Crash BottlePoppin 2	711	H H-Brush-1-half2	748	ClosedHH Arena 1
675	Crash BottlePoppin 3	712	H H-Brush-1-half1	749	Splash Off V1
676	Crash BottlePoppin 4	713	H H-Brush-1-closed	750	OpenHH AfroShop 2
677	Crash Bouncin1	714	H H-Brush-1-chick	751	OpenHH AfroShop 3
678	Crash Bouncin2	715	HH-Brush-1-splash	752	OpenHH AfroShop 1
679	Crash Bouncin3	716	HH-Fiesta-1-open-rods	753	ClosedHH AfroShop 1
680	Crash Bouncin4	717	HH-Fiesta-1-Half3	754	ClosedHH AfroShop 2
681	RevCrash Concrete	718	HH-Fiesta-1-Half2	755	ClosedHH AfroShop 3
682	HH_Classic_14_Shoulder_OpenX	719	HH-Fiesta-1-Half1	756	Splash Syntheti
683	HH_Classic_14_Shoulder_HalfOp3X	720	HH-Fiesta-1-closed-top-rods	757	Splash TerrorCore
684	HH_Classic_14_Shoulder_HalfOp2X	721	HH-Fiesta-1-closed-edge-XL	758	OpenHH Arena 1
685	H H_Classic_14_Shoulder_Closed2X	722	HH-Fiesta-1-closed-edge2-XL	759	OpenHH Arena 2
686	H H_Classic_14_Edge_OpenX	723	HH-Fiesta-1-chick	760	ClosedHH Arena 2
687	HH_Classic_14_Edge_HaltOp3X	724	HH-Fiesta-1-splash	761	ClosedHH Arena 3
688	HH_Classic_14_Edge_HaltOp1X	725	HH-Vintage-Top-open-XL2	762	ClosedHH Arena 4
689	HH_Classic_14_Edge_Closed2X	726	HH-Vintage-Top-open-XL	763	ClosedHH Arena 5
690	H H_Classic_14_TchickX	727	HH-Vintage-Top-open-L	764	ClosedHH Arena 6
691	H H_Classic_14_SplashX	728	HH-Vintage-Top-open	765	Splash Synthgaze
692	H H-Rock-Top-open	729	HH-Vintage-Top-Half3	766	OpenHH Argon 2
693	H H-Rock-Top-halt4	730	HH-Vintage-Top-Half2	767	OpenHH Argon 1 V1
694	H H-Rock-Top-half3	731	HH-Vintage-Top-Half1	768	ClosedHH Argon 1 V2
695	H H-Rock-Top-half2	732	HH-Vintage-Top-closed	769	ClosedHH Argon 2
696	H H-Rock-Top-half1	733	HH-Vintage-chick	770	ClosedHH Argon 3
697	H H-Rock-Top-closed	734	HH-Vintage-Splash	771	ClosedHH Argon 1 V1
698	H H-Rock-Edge-open-XL	735	HH-Electro8-open	772	Shaker Argon
699	H H-Rock-Edge-halt4	736	HH-Electro8-Half3	773	Splash Argon
700	H H-Rock-Edge-half3	737	HH-Electro8-Half2	774	OpenHH BottlePoppin1
701	H H-Rock-Edge-half2	738	HH-Electro8-Half1	775	OpenHH BottlePoppin2
702	H H-Rock-Edge-halt1	739	HH-Electro8-closed	776	ClosedHH BottlePoppin 1
703	H H-Rock-Edge-closed-XL	740	HH-Electro8-chick	777	ClosedHH BottlePoppin 2

APPENDIX

PRESET VOICE LIST

NUM	NAME	NUM	NAME	NUM	NAME
778	ClosedHH BottlePoppin 3	815	OpenHH Concrete 3	852	Applause-OneShot
779	ClosedHH BottlePoppin 4	816	ClosedHH Alphabetical 1	853	Door Closing-OneShot
780	OpenHH BottlePoppin3	817	ClosedHH Alphabetical 2	854	Door Creaking-OneShot
781	Splash Ganja	818	ClosedHH Alphabetical 3	855	Wind Chimes-Compare
782	OpenHH Bouncin 1	819	ClosedHH Alphabetical 4	856	Wind Chimes-OneShot
783	OpenHH Bouncin 2	820	Cabasa Argon	857	Wind Chimes-OneShot-HP
784	OpenHH Bouncin 4	821	Splash Off V2	858	Car Engine-OneShot
785	ClosedHH Bouncin 1	822	CowBell-X	859	Car Brakes-OneShot
786	ClosedHH Bouncin 3	823	Clap Absynth	860	CarCrash+OneShot
787	ClosedHH Bouncin 4	824	Clap AfroShop 1	860	Car Passing-OneShot
788	ClosedHH Bouncin 2	825	Clap AfroShop 2	862	Siren-OneShot
789	Splash GarageX V5	826	Clap Arena 1	863	Train-OneShot
790	OpenHH Concrete 1	827	ClapArena2	864	Jet Plane-One Shot
791	OpenHH Concrete 2	828	Clap Arena 3	865	Helicopter-OneShot
792	ClosedHH Concrete 1	829	ClapArena4	866	Starship-OneShot
793	ClosedHH Concrete 2	830	Clap Arena 5	867	Gun Shot-OneShot
794	ClosedHH Concrete 3	831	Clap Arena 6	868	Machine Gun-OneShot
795	OpenHH Concrete 4	832	Clap Argon 1	869	Machine Gun-OneBig
796	ClosedHH Concrete 4	833	Clap Argon 2	870	Horse Gallop-OneShot
797	Splash Neubauten V3	834	Clap BottlePoppin 1	871	Birds Tweet-OneShot
798	OpenHH Dakeat	835	Clap BottlePoppin 2	872	Rain-OneShot
799	OpenHH BottlePoppin4	836	Clap BottlePoppin 3	873	Thunder-OneShot
800	ClosedHH Dakeat 1	837	Clap BottlePoppin 4	874	Wind-OneShot
801	ClosedHH Dakeat 2	838	Clap Bouncin 1	875	Seashore-OneShot
802	ClosedHH Dakeat 3	839	Clap Bouncin 2	876	Stream-OneShot
803	ClosedHH Dakeat 4	840	Clap Bouncin 3	877	Stream-OneShotHPF
804	OpenHH Bouncin 3	841	Clap Bouncin 4	878	Bubble-OneShot
805	Splash Neubauten V1	842	Clap Concrete 1	879	Snap Absynth 1
806	OpenHH Jack 1	843	Clap Concrete 2	880	Snap Absynth 2
807	OpenHH Jack 2	844	Clap Funk 1	881	Shaker Absynth
808	OpenHH Jack 3	845	Clap Funk2	882	SFX Absynth 1
809	ClosedHH Jack 1	846	Clap Funk 3	883	SFX Absynth 2
810	ClosedHH Jack 2	847	Clap Funk4	884	Metal Absynth 2
811	ClosedHH Jack 3	848	Laughing-OneShot	885	Chord Absynth 1
812	ClosedHH Jack 4	849	Screaming-OnsShot	886	Chord Absynth 2
813	Splash Neubauten V2	850	Punch-OneShot	887	Chord Absynth 3
814	OpenHH Alphabetical	851	Heart Beat-OneShot	888	Shaker AfroShop

APPENDIX

PRESET VOICE LIST

NUM	NAME	NUM	NAME		
889	Calabash AfroShop	926	Vocal Dakeat 1		
890	Synth Arena 1	927	Vocal Dakeat 2		
891	Synth Arena 3	928	Vocal Dakeat 3		
892	Synth Arena 4	929	Vocal Dakeat 4		
893	Synth Arena 5	930	Vocal Dakeat 5		
894	Bass Arena 4	931	Vocal Dakeat 6		
895	SFXArgon 2	932	Bass Concrete 1		
896	SFXArgon 3	933	Bass Concrete 3		
897	Zap BottlePoppin	934	Bass Concrete 5		
898	Tamb BottlePoppin	935	Bass Concrete 6		
899	Strike BottlePoppin	936	Bass Concrete 10		
900	Shaker BottlePoppin 1	937	Bass Concrete 11		
901	Shaker BottlePoppin 2	938	Stab Concrete		
902	Shaker BottlePoppin 3	939	Bass Jack 1		
903	Noise BottlePoppin	940	Bass Jack2		
904	Dist BottlePoppin	941	Bass Jack3		
905	Shaker Bouncin 1	942	Bass Jack4		
906	Shaker Bouncin 2	943	Bass Jack5		
907	Shaker Bouncin 3	944	Bass Jack6		
908	Shaker Bouncin 4	945	Bass Jack 7		
909	SFX Bouncin 1	946	Bass Jacka		
910	Pere Bouncin	947	Shaker Jack 1		
911	Impact Bouncin	948	Shaker Jack 2		
912	Blip Bouncin 1				
913	Blip Bouncin 2				
914	Buzz Dakeat 1				
915	Buzz Dakeat 3				
916	Buzz Dakeat 4				
917	Crackle Dakeat 1				
918	Crackle Dakeat 2				
919	Crackle Dakeat 3				
920	Crackle Dakeat 4				
921	Pere Dakeat 1				
922	Pere Dakeat 3				
923	SFX Dakeat2				
924	SFX Dakeat 3 V1				
925	SFX Dakeat 3 V2				

SPECIFICATIONS

Preset Kits	52, fully adjustable
User Defined Kits	20
Play-along Songs	15
Individual Kit Sounds	948
LCD Screen	128x64 Black & White LCD
DSP Effect	Reverb, EQ, Pitch, Pan, Decay
Tempo Range	20 - 280 BPM
USB	USB-MIDI
Bluetooth	Yes

CONNECTORS:

USB-MIDI	USB-Type B
PHONE OUT	3.5mm
L/MONO, R OUT	6.35mm
AUX IN	3.5mm
MIDI IN/OUT	Standard 5pin /6core MIDI
TOM4	6.35mm
CRASH2	6.35mm
Data Loom Input	DB25

COMPONENTS:

Kick Pedal	Full Size Single Kick Pedal
Kick Drum Pad	8" Superamour Pad
Snare	12" Dual Zone Pad
Toms	3 x 10" Dual Zone Pad
Hi Hat	12" Dual Zone Hi-Hat Pad with Real Hi-Hat Pedal Stand
Crash	2 x 12" Dual Zone Choke-able Cymbal Pad
Ride	14" Three Trigger Cymbal Pad

WWW.GEAR4MUSIC.COM

KETTLESTRING LANE | YORK | YO30 4XF | UNITED KINGDOM
LAHNSTRASSE 27 | 45478 MÜLHEIM AN DER RUHR | DEUTSCHLAND

If you have any more questions about this product, please do not hesitate to contact the Gear4music Customer Service Team on: **+44 (0) 330 365 4444** or **info@gear4music.com**