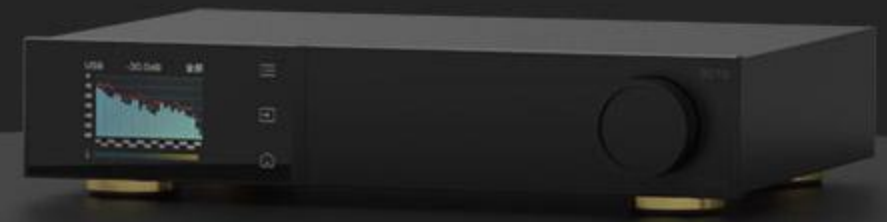
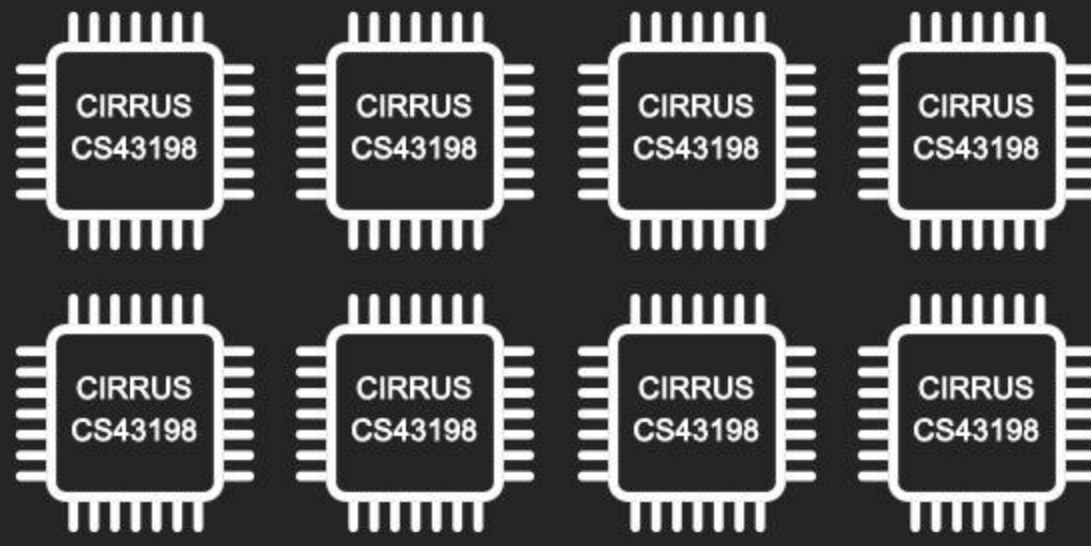


The Era Of Eight Cores

D70 Pro **OCTO**

HIFI DAC





8x CS43198



Colour display



Aurora UI



Hi-Res



Hi-Res Wireless



Bluetooth 5.1
supports LDAC

<0.00007%
@1kHz (A-wt)

THD+N

134dB
@A-wt

Dynamic Range

RCA&XLR

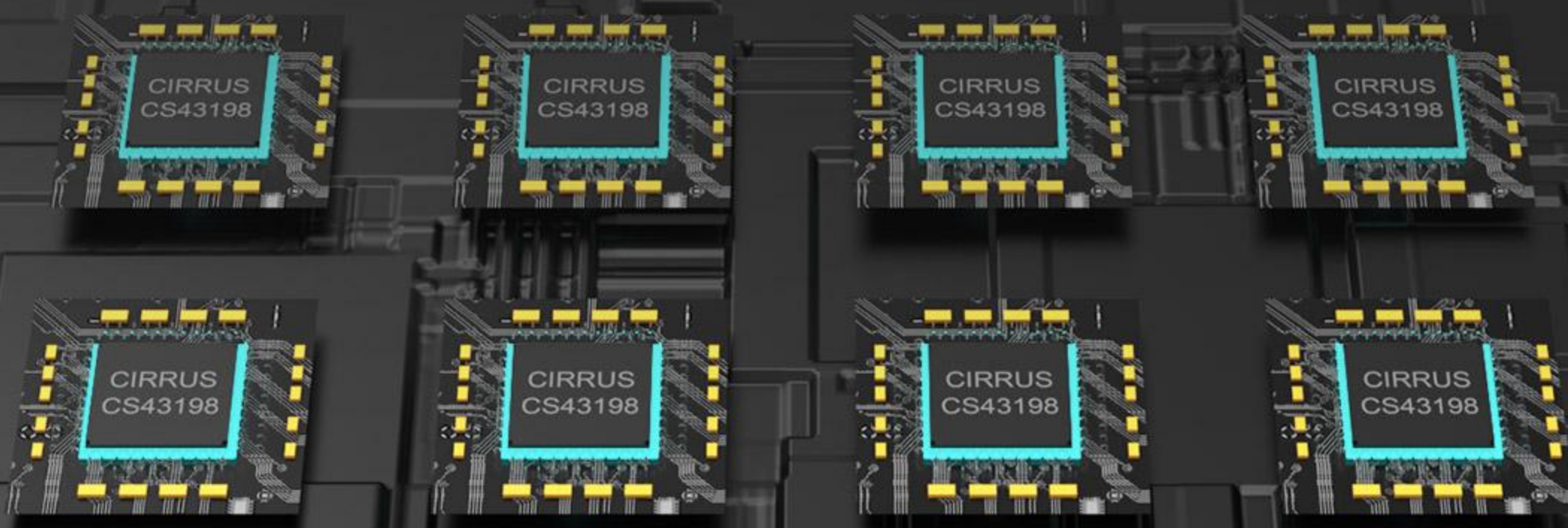
Output



Remote control

8-core driver

The D70 Pro OCTO is equipped with 8 Cirrus Logic flagship chips—CS43198. The D70 Pro OCTO also supports up to PCM768kHz/32bit and DSD512 audio decoding, which brings you an even more superior music experience.



Powerful without explanation

The D70 Pro OCTO's ability to restore music has reached a new level, with its details perfectly displayed.

THD+N (5v A-wt)

<0.00007%

SNR

134dB

DNR

134dB

Noise

<1.0uVrms



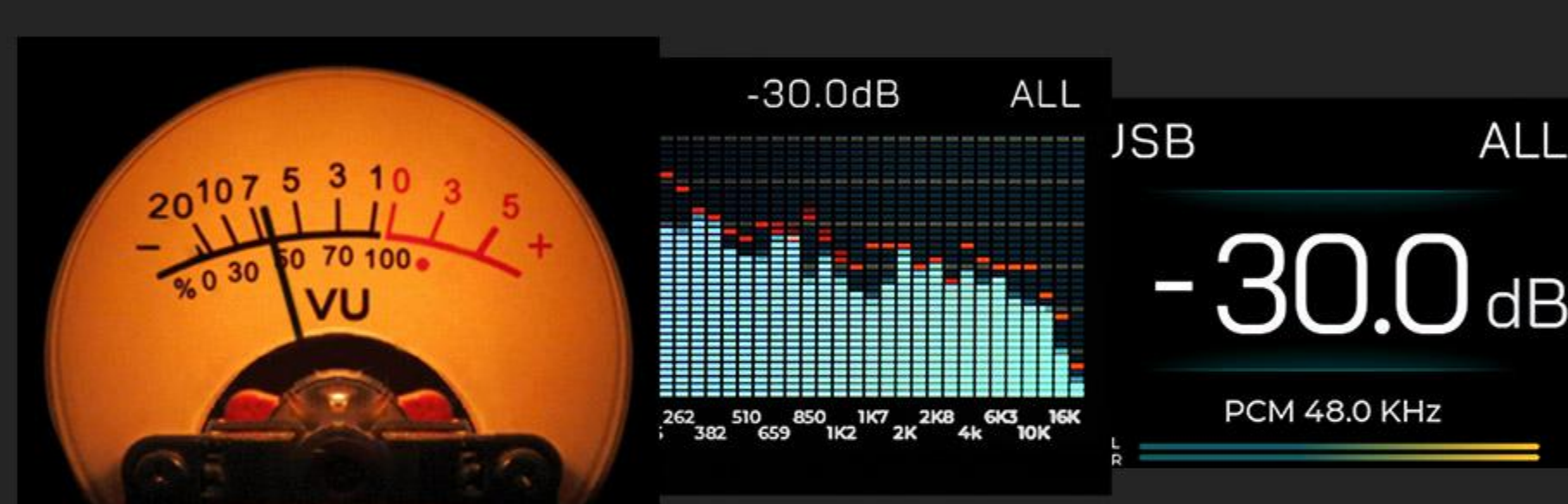
Aurora UI bring new experience

Full color screen and three touch buttons
Experience has changed since



Colors Jump out at you

The display of the playback information, FFT, VU
can be switched according to your requirements.



Customized functions are available by pressing the
volume knob.



Switch between Chinese
and English

Note: You can choose between Chinese and
English when you first turn on the D70 Pro OCTO.



Bluetooth 5.1 transmission

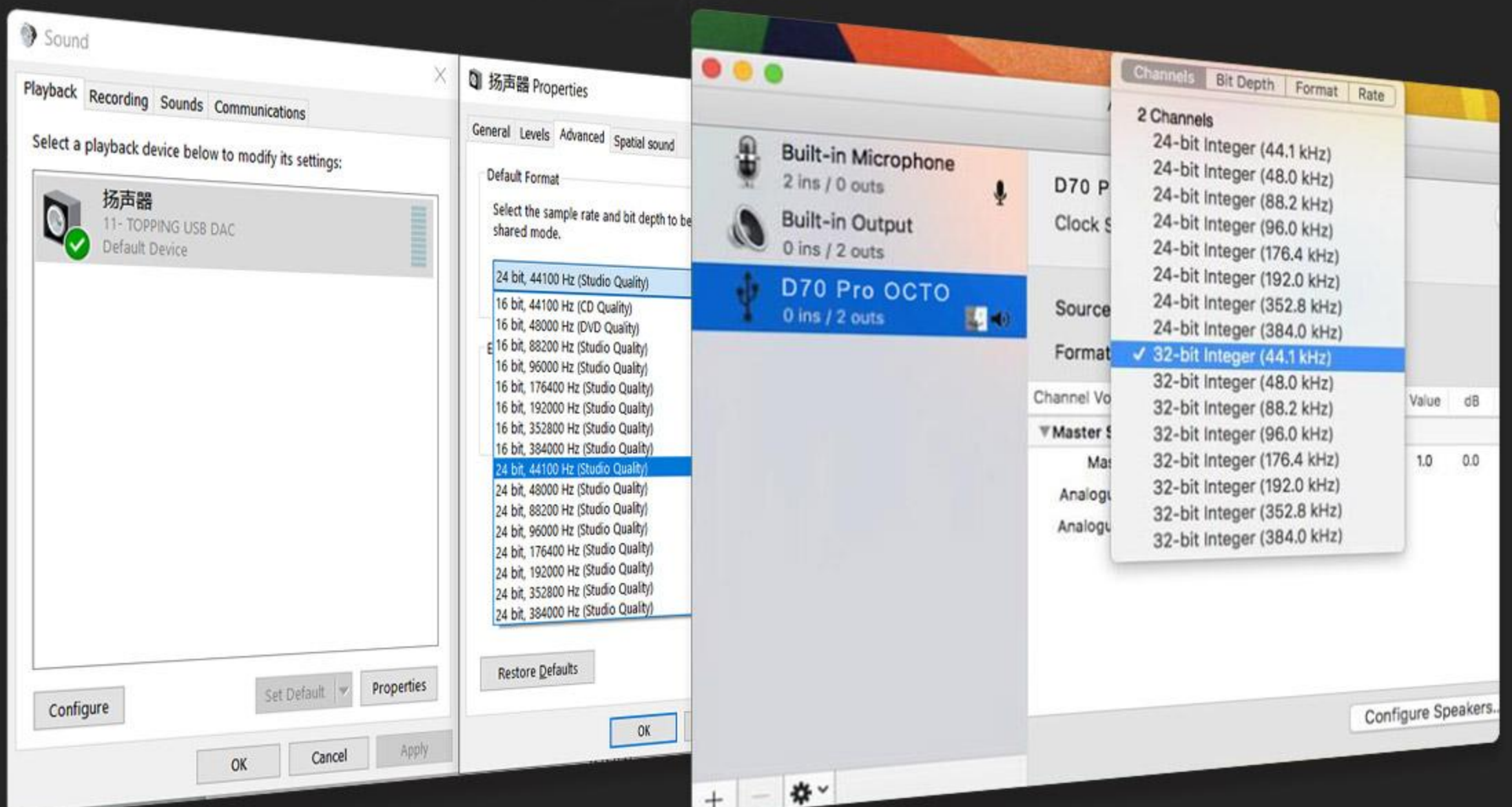
D70 Pro OCTO supports LDAC/aptX-Adaptive/ aptX HD/aptX/AAC/SBC audio encoding, allowing high quality audio to be transmitted wirelessly for a better sound experience.



Plug and play

D70 Pro OCTO has wide compatibility and can be used on multiple operating systems, such as Windows 10, Windows 11, MAC, Linux, and iOS/Android. Simply connect to the audio source and you can use it immediately.

It requires driver installation and setup for ASIO applications on Windows systems only. The USB hardware is based on XMOS XU316 and Thesycon custom driver (applicable to Windows, other systems are free of driver), which is stable and reliable.



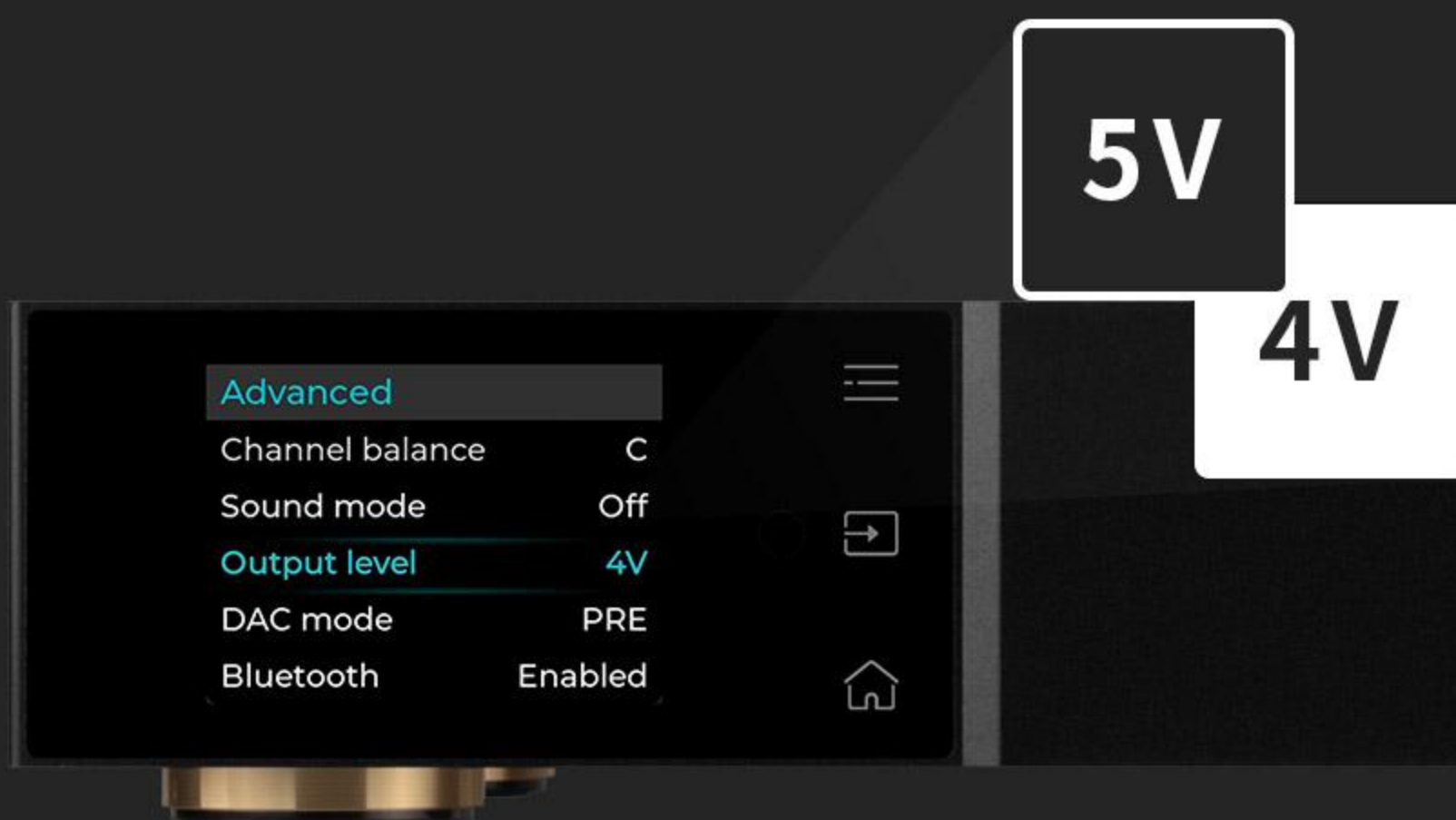
Freely switch output modes

The D70 Pro OCTO features the versatile RCA single-ended output and the professional XLR balanced output. You can turn on only the desired output channel, or both outputs at the same time. Whether you are connecting two different systems or in a situation where you need to output two audio signals at the same time, the D70 Pro OCTO provides you with a more convenient and efficient way to output.



One more possibility of output mode

In addition to the more versatile XLR 4V and RCA 2V outputs, there is also widespread demand for XLR 5V and RCA 2.5V. The D70 Pro OCTO adds this option to meet a broader range of needs. Adapt to more devices when choosing XLR 4V and RCA 2V, and take performance to the next level when choosing XLR 5V and RCA 2.5V.



Integrated preamp function

In addition to the fixed output level DAC mode, the D70 Pro OCTO also has a "preamp" mode. In this mode, the D70 Pro OCTO can adjust the volume and output directly to the power amplifier or active speakers.



Independent volume memory

D70 Pro OCTO can memorize the output volume of "Single Ended", "Balanced" and "All" modes respectively.

And the next time the output is selected, it automatically reverts to the last used volume.



12V Trigger

D70 Pro OCTO has 12V Trigger input and output interface, which supports being triggered by other devices to switch on and off, and also supports actively triggering other devices to switch on and off synchronously.



Best match— A70 Pro

A70 Pro and D70 Pro OCTO have identical design languages and can meet the needs of the vast majority of headphones and active speakers. The A70 Pro and D70 Pro OCTO can be switched on and off in conjunction via the 12V Trigger connector, allowing the A70 Pro to be synchronized with the D70 Pro OCTO for automatic or manual switching.





PC



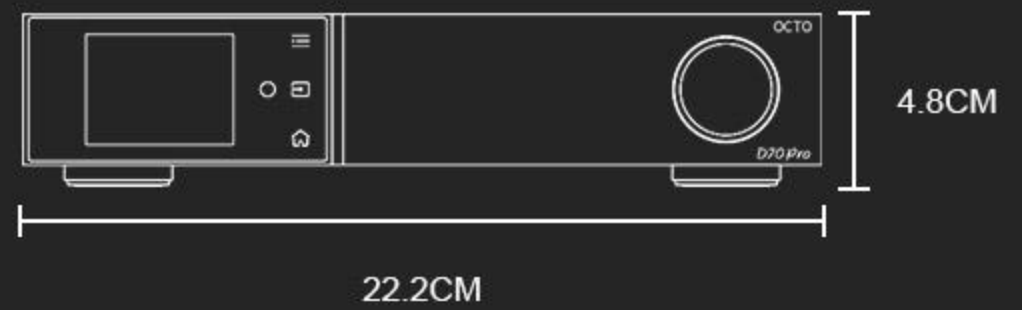
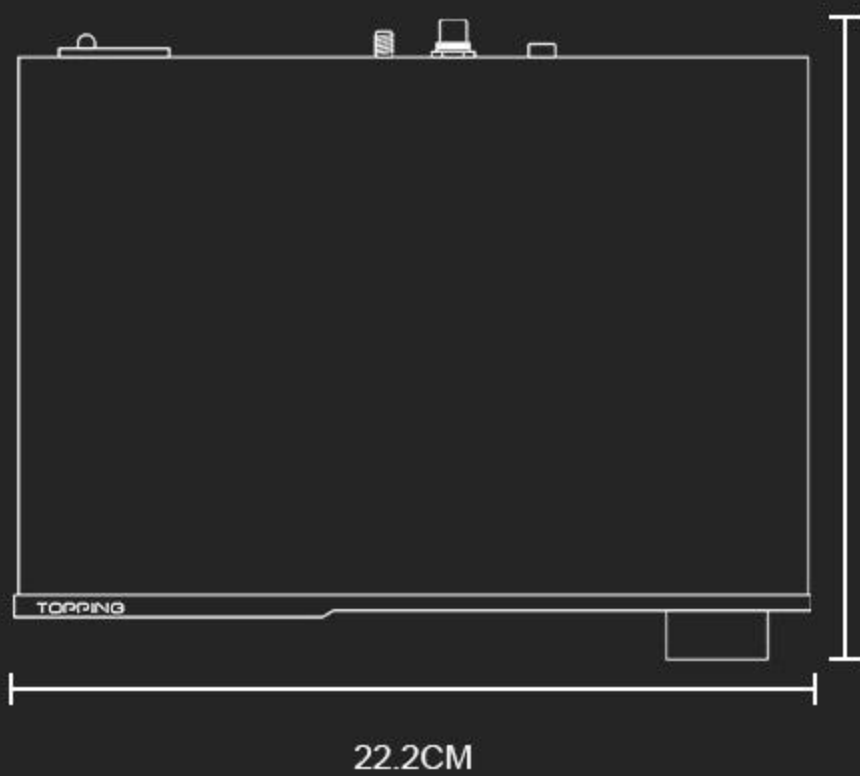
D70 Pro OCTO



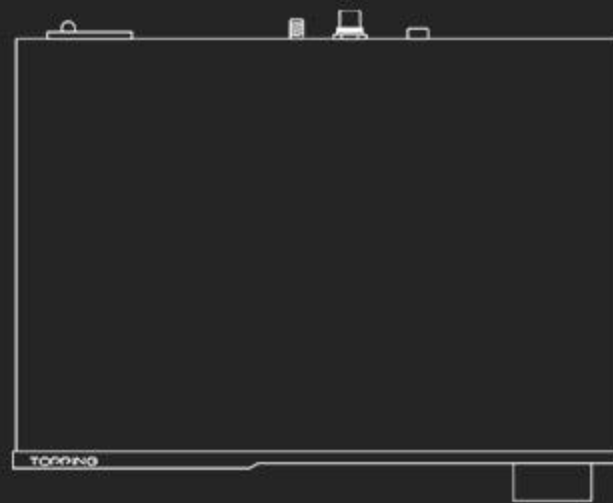
Headphone
Amplifier



Headphones



Contents list



D70 Pro OCTO



Remote control



USB cable



AC cable



Bluetooth antenna



Quick Start Guide





TOPPING

USB ALL
768.0 PCM KHz
Minimum Phase



OCTO

JPro







D70 Pro OCTO DAC parameters (LineOut/USB In@96kHz)

	RCA	XLR
THD+N @A-wt	<0.00008% @1kHz	<0.00007% @1kHz
THD @No-wt 90kBw	<0.0004% @20-20kHz	<0.0002% @20-20kHz
SNR @A-wt	128dB @1kHz	134dB @1kHz
Dynamic Range @A-wt	128dB @1kHz	134dB @1kHz
Frequency Response	20Hz-20kHz(±0.05dB)	20Hz-20kHz(±0.05dB)
	20Hz-40kHz(±0.2dB)	20Hz-40kHz(±0.2dB)
Output Level	2.1Vrms @0dBFS(4V Mode)	4.2Vrms @0dBFS(4V Mode)
	2.6Vrms @0dBFS(5V Mode)	5.2Vrms @0dBFS(5V Mode)
Noise @A-wt	<1.0uVrms	<1.0uVrms
Channel Crosstalk	-124dB @1kHz	-149dB @1kHz
Channel Balance	0.3dB	0.3dB
Output Impedance	50Ω	100Ω

*Note: The above data is the result of the test in TOPPING laboratory under AC220V 50Hz condition.

