

Model covered

AP-505

Equipment used

Windows computer (with built-in USB 2.0 port)
Micro USB cable

- Cables designed only for charging cannot be used. Always use a micro USB cable that supports data transmission.

Supported operating systems

Windows 7 (32/64-bit)
Windows 8 (32/64-bit)
Windows 8.1 (32/64-bit)
Windows 10 (32/64-bit)
(as of July 2022)

1. Check the firmware version

1 Put the unit into standby, and disconnect everything except the power cord from it.

2 Turn the unit on.

3 Switch the INPUT SELECTOR on the back of the unit three times rapidly.

The level meters show the firmware version.

Version	LEFT	RIGHT
1.00	-40 dB	-∞
1.01	0 dB	-∞
1.02	0 dB	-40 dB
1.03	0 dB	0 dB
1.04	-40 dB	0 dB

Microsoft and Windows are either registered trademarks or trademarks of Microsoft Corporation in the United States and/or other countries.

Other company names and product names in this document are the trademarks or registered trademarks of their respective owners.

2. Install the DFU driver

Set the unit's STANDBY/ON switch to STANDBY, and begin the following operations before connecting it with the computer.

NOTE

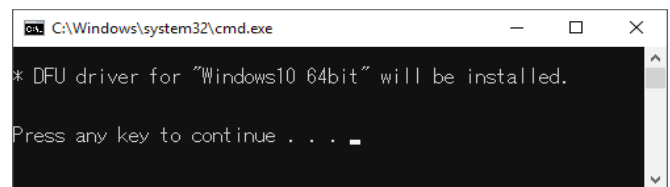
- After installing the DFU driver on the computer once, installing it again will not be necessary. If installation is complete, proceed to "3. Update the firmware".
- The screens used in this example are from Windows 10.

1 Uncompress the downloaded file.

The following files will be created.

- Win_DFU_driver.exe
- AP505_updater_xxxx.exe (xxxx is the firmware version)

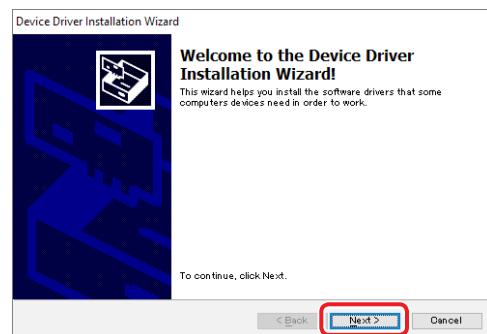
2 Double-click Win_DFU_driver.exe, and press the Enter key.



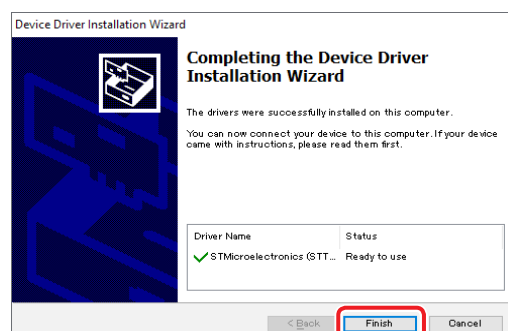
NOTE

If a "User Account Control" pop-up message appears during installation, click "Yes".

3 When the Device Driver Installation Wizard appears, click "Next".



4 Click "Finish".

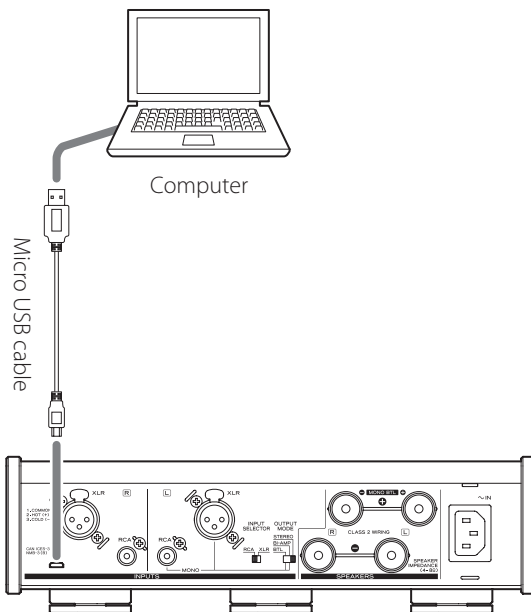


3. Update the firmware

A micro USB cable is necessary to update the firmware. **Use a commercially-available cable.**

- Cables designed only for charging cannot be used. Always use a micro USB cable that supports data transmission.

- 1 Turn the unit on.**
- 2 Switch the INPUT SELECTOR on the back of the unit three times rapidly.**
- 3 Use a micro USB cable to connect the computer to the USB Micro-B maintenance port on the back of the unit.**



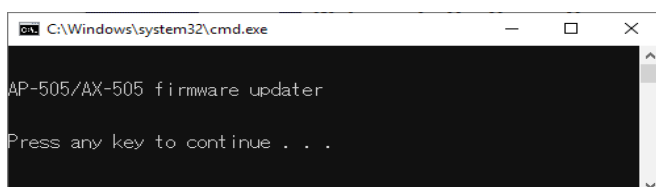
- Refer to the unit's operation manual for the location of the maintenance port.
- Cables designed only for charging cannot be used. Always use a micro USB cable that supports data transmission.

4 Put the unit into standby mode.

After the level meters blink twice, they will become unlit and update mode will be activated.

- The USB driver will be installed on the computer automatically. Wait until it is complete. When first connected, loading the driver takes some time.

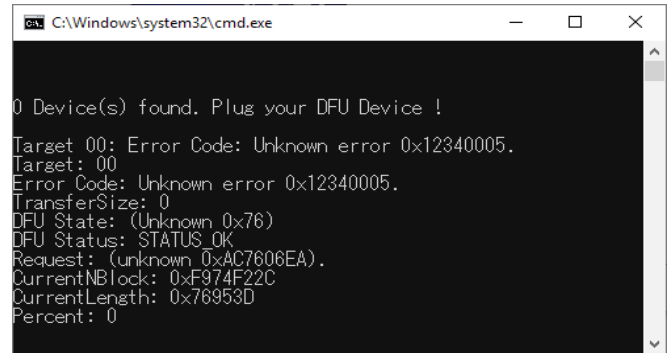
5 Double-click AP505_updater_xxxx.exe, and press the Enter key.



Do not disconnect the unit's power cord or the micro USB cable while updating. Doing so could make the unit not operate properly.

NOTE

The following screen will appear if the unit is not recognized by the computer. Click the x at the top right of the window to close it.



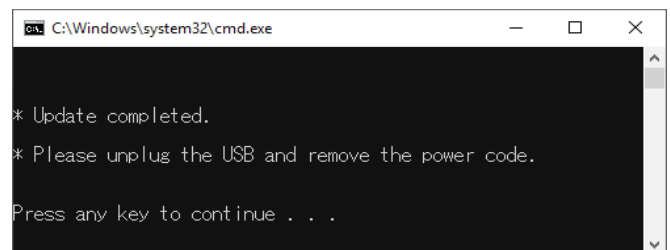
If the screen shown above appears, check the following item and repeat step 1.

- The DFU driver is installed.

ATTENTION

- Cables designed only for charging cannot be used for firmware updates. Always use a micro USB cable that supports data transmission.
- Connecting to a different USB port on the computer might allow it to recognize the unit.
- To cancel updating when the above screen appears, disconnect the power cord of the unit from the outlet once.

6 When “* Update completed.” appears, press the Enter key to close the window.



7 Disconnect the micro USB cable and power cord.

After disconnecting the power cord, leave the unit as is and wait for two minutes.

This will switch the unit from update mode back to normal operation mode.

- Follow the procedures in “1. Check the firmware version” on the previous page to check the firmware version.