



VOICE OF GAIA: STRAWBERRY captures the smoky, sultry, ethereal sound of preeminent lead vocalist Linda Strawberry in a powerful cutting-edge virtual solo female vocal library designed for professional composers, producers and songwriters. The library features a huge range of playable content, including thousands of fully customizable live phrases and deep multi-sampled chromatic content, with over 11,300 samples and 5.4 GB of content.

Spanning a broad range of musical styles and flavors, ranging from mysterious ethnic wailing to atmospheric dream-pop, this library is ideal for just about any genre of music, from EDM to cinematic soundtrack scoring. You'll find nuanced and life-like True-Legato sustains recorded in the classic long-form method to maximize realism and fluidity. This library offers plenty of well-organized key and tempo based phrase categories with easy time-stretching/tempo-locking and transposition to make working with it a breeze in any track. We've spared no detail in our quest to bring you our most flexible, adaptive and musical female solo vocal collection yet.

We hand-picked our featured solo artist Linda Strawberry specifically for her rich, mysterious and passionate voice and her distinctive emotional performance style. First, we covered True Legato vowel sustains for the universal Ah vowel, using the long-form method for unparalleled quality and realism, with 3-voice polyphonic legato. You'll also find classic vowel sustains for Ah (piano & forte), Oh (piano & forte), Oo (mp) and Mm (mp) sounds, with a choice between infinitely looping (w/release) and natural note decays for each sustaining note, 3-voice polyphonic support and plenty of fine-tuning parameters. There are fully shapable staccato syllables (Ah (p/f), Oh (p/f), Oo and Mm, with EZ syllable switching. All of this chromatic content spans a playable key range of well over 2 octaves, with total user control over all essential parameters.

She then performed improvised melodic vowel and invented language-based short phrases at 80, 100, 120 and 140 bpm, with sets in the keys of A#, C, D, E, F# and G# (equally distributed roots over a whole tone scale), with full tempo and timing control to give you plenty of tuning and tempo options. These elements provide a living, breathing soul and energy that can't truly be captured any other way.

To make using the phrases easy and inspiring, we provide a variety of exclusive automatable GUI, Midi and key-switch control options. You can use regular midi notes to trigger any of the included phrases for each set and use the GUI controls or key-switches to switch between sets on the fly. Offset, attack, release, timing and tuning controls allow total customization for each sample.

Or you can use our advanced 32-step phrase sequencer, with individual start offset and duration control for each step, with multiple playback mode options and graphic waveform display. Next, we covered various vocal sfx, such as whispers, laughing, coughing, throat-clearing, breathing and performance breaths, warm-ups and more. Finally, we took the source material and contorted it into an excellent selection of ambiences, drones, atmospheres, pads, leads and special FX instruments.

We recorded in a close, totally dry studio environment with a pair of exceptional large-diaphragm Neumann microphones and Sound Devices preamps to capture every subtle nuance. You can choose between the two mics or mix them together, with separate loading/purging, volume and pan adjustment for each channel. You can combine the crisp, clear sound of our mics with our custom convolution reverb impulse selector to place Linda in a variety of different natural and surreal environments, from cathedrals and churches to bunkers and garages.

We then carefully prepared and edited each sample and hand-programmed each element into a unrivaled performance interface that delivers both efficiency and control. We've also included our comprehensive FX Rack panel, with multi-effects, compression, EQ, amp/speaker simulation and convolution reverb.

We're proud to add Voice Of Gaia: Strawberry to our premier solo vocal collection, bringing together superior programming, performance, and production quality with lush and inspired vocal artistry.



SOUNDIRON

Voice of Gaia - Strawberry version 1.0

OVERVIEW

A Soulful, Dynamic Mezzo-Soprano Library featuring both Multi-samples and Phrases
 33 open format Kontakt .nki instrument presets
 11,316 Samples
 5.44 GB Installed
 24bit / 48kHz stereo PCM wav samples (unencrypted)
 2 microphone types with dual-channel mix and pan control
 Powerful custom performance and FX control interface
 New Powerful FX Rack to Apply and Combine Effects
 Dozens of custom environmental reverbs and special FX impulses integrated into the GUI
 Bonus Vocal Ambiences, Atmospheres and Tonal Pads

Note:

- The full version of Kontakt 5.1.0 or later is required. Preset browsing & loading with the Files, Database & Quickload tabs.
- The free Kontakt "Player" and special "Libraries" tab do not support this standard open-format Kontakt library.

CREDITS

Vocal Performance by Linda Strawberry Coloma

Directing, Recording, Editing, Programming and Design by
Michael Peaslee, Gregg Stephens & Chris Marshall

Scripting & Systems Design by
Chris Marshall

GUI Development and Artwork by
Constructive Stumblings, Chris Marshall & Gregg Stephens

Artist Photos Provided By
Linda Strawberry

TABLE OF CONTENTS

General ::

INTRODUCTION - Pages 1 - 2
 OVERVIEW & CREDITS - Page 3

Technical ::

ABOUT Linda Strawberry - page 4
 FORMAT, SYSTEM REQUIREMENTS & INSTALLATION - Page 5

User Interface ::

MAIN FRONT PANEL CONTROLS - Page 6
 LEGATO CONTROLS - Page 7
 PRESET TYPES - Pages 8 - 13
 FX RACK CONTROL PANEL - Pages 14 - 16
 KEYSWITCHES - Page 17

Instrument Descriptions ::

PHRASE PRESET DESCRIPTIONS - Pages 18 - 19
 MULT-ISAMPLED/CHROMATIC PRESET DESCRIPTIONS - Page 20
 AMBIENT PRESET DESCRIPTIONS - Page 21

Info ::

LICENSE AGREEMENT - Page 22
 THANK YOU - Page 23



ABOUT THIS LIBRARY

Linda Strawberry

Linda Strawberry is a Los Angeles based vocalist and songwriter. Born in Utah to composer parents Rob and Kit Rowberry, she spent her early years focusing on piano performance and music theory. At age 13 she began assisting her dad in the studio, learning the basic of MIDI sequencing and sound recording in the early days of digital audio. At 17 she began composing and doing vocal sessions with Utah based composers for video games, commercials, and television including Good Morning America, and National Geographic.

At 18 she moved to Los Angeles and started working as an assistant producer / engineer for Bjorn Thorsrud, Alan Moulder, and Bon Harris, working on records for Marianne Faithfull, Smashing Pumpkins, The Dandy Warhols, and Zwan. During this time she sang the lead on "I Know My Redeemer Lives" for Especially for Youth and did a duet with David Coverdale of Whitesnake on his song "Wherever You May Go". She also collaborated with Billy Corgan on the soundtrack to the movie 'Spun', singing the lead on the version of 'Love to Love' from that soundtrack. After turning 21 she began working for Pierre Marchand as an engineer on Sarah McLachlan's 2003 record "Afterglow". This record was very inspiring to her and after it was completed she decided to take a break from engineering and try to get her own record deal.

In 2004 she signed to Chrysalis Music with a publishing record deal. In 2005 she took a hiatus from her record to tour the world with Billy Corgan as part of his Future Embrace Tour. During 2003 - 2005 she developed a strong following on Myspace.com and became very vocal about all the changes going on in the industry and decided that it made more sense to go independent and retain more artistic freedom. In 2006, she split from Chrysalis and formed her own label Lovely Chaos and has since released two records, the Lost Record (2007), and Lip Distortion (2009).

In 2008 -2009 she continued her collaboration with Billy Corgan singing background vocals for Smashing Pumpkins songs "Astral Planes" and "Widow Wake My Mind". She was also part of a side band called Spirits in the Sky with members including Billy Corgan, Dave Navarro (Jane's Addiction), Mark Tulin (Electric Prunes), Kerry Brown (Catherine), and Mark Weitz (Strawberry Alarm Clock).

After a two year hiatus, during which she gave birth to her first child, she collaborated with director husband Justin Coloma creating the artwork for Peter Murphy's "I Spit Roses" music video. She also recorded a duet with Curt Smith (Tears for Fears) for The Shadow Bureau's "Don't Give Yourself Away".

Currently she has a song in the current season of Disney show Phineas and Ferb which will be airing soon. She is also finishing the writing of a new concept record and video project while anticipating the birth of her second child.



Format Accessibility

All of the sample content is included as standard open PCM wav files to allow you easy access to manipulate, reprogram and customize the sounds however you wish. We know that it's important for many users to be able to go beyond the limitations of any one format, so we've kept this library's directories and files open for our advanced users. As a professional, you may have your own workflow or format requirements, and we trust that you'll respect our hard work and won't share this content with anyone who hasn't paid for it.

You'll need the full retail version of Native Instruments Kontakt 5.1.0 or later to use the nki presets in this library. The free Kontakt "Player" and any other version of Kontakt that came bundled with another library or software product (other than NI's full "Komplete" package) don't support this library. The free Kontakt Player is NOT a full version of Kontakt and cannot load or play standard open-format Kontakt instruments, wav samples or libraries. Please read all instrument specs and software requirements before purchasing this or any other Soundiron products to see the full list of software requirements, features and format compatibility for each library.

Fidelity

This library was recorded in wide stereo at 48kHz / 24bit. Natural variances and artifacts in the human voice may be present in some samples. Therefore, please keep in mind that this library isn't designed to provide perfectly sterile result. Our goal is to preserve and accentuate the natural human qualities in our performer's voice without overly modifying and sterilizing the recordings.

System Requirements

Please be aware that many instrument and multi-instrument programs in this library are extremely ram/cpu and hard disk-streaming resource intensive. We highly recommend that you have a 64-bit operating system (Windows or OSX) with *at least* 4GB of system ram, a multi-core cpu and a 7200 rpm SATA or SSD hard disk before purchasing this particular Soundiron library. Large sample sets like those found in this library may load slowly and may cause system instability on older machines.

Download & Installation

We provide the Continuata Connect download manager to offer high-speed, reliable and fully automated library downloading and installation. Download and run the latest version for your OS (PC or Mac) before proceeding. You may also need to add special permissions to your security software for the downloader, if it blocks applications from accessing the web.

Next, copy-paste your download code from your download email into the Code box in the downloader window. Press the download button and select the location you'd like to download and install the library. It will automatically start downloading the file(s) and then error-check, extract and install the finished library. Once installation is fully complete, you can remove the .rar download files and store them in a safe place as a back-up copy. We always recommend downloading the latest version of our downloader before you begin. The link in your email will always take you to the latest version.

Don't move, rename, delete or modify any of the files or folders created during the download until after you see the status message for all files in your download queue display the word "**INSTALLED**". Please don't close the downloader while it's actively downloading, unless you press the pause button first. To resume downloading, press the Resume button. If you need to resume downloading after closing the downloader, run it again and enter your code and press Download again. Then select the same download/installation location on your computer that you chose originally.

If the downloader reports a DL Error or Install error, it will automatically try to download the file again until it successfully downloads and verifies all the data it needs. It's best to allow it to finish the process before trying to move or access the library data. Please see your download email for more detailed instructions.

Manual Download

If you have any trouble with our Downloader utility or prefer to use your browser or another download manager, log into your personal manual download page on our website, by using the direct link in your download email. Log in using your download code. Or, if you used the downloader originally, but you need to re-install the library manually for any reason at a later time you can always re-use the original rar files. To do that, you'll need Winrar, UnrarX or another full-featured Rar extraction utility to extract and install the library. Please note that Stuffit Expander and Winzip DON'T support many types of common rar files.

Preset Loading

Once installation is complete, you can browse and load the included .nki presets using the Files, Quickload or Database tabs in the Kontakt Browser, or through the main File load/save menu. Please allow any current preset to finish loading completely before loading a new one. You can't use the Libraries view to load standard open-format Kontakt Instruments like this library. Only locked "Powered-By-Kontakt" Libraries are visible to that propriety browser view. The "Add-Library" function does not support this product or any other open-format Kontakt library. This library doesn't require any special activation.



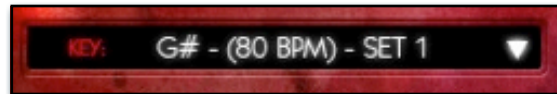
Common Front Panel Controls

This instrument has a variety of special front panel performance controls that allow deep real-time performance customization. Voice of Gaia: Strawberry contains multiple preset categories that share a number of common controls which allow users to shape the sound. You can see each control's internal midi CC assignment by hovering your mouse over many of the controls and looking down at the "hint" text displayed in the Info bar at the bottom of Kontakt. To turn on the Info bar, press the "i" button at the top of Kontakt.

To assign midi CC automation to any knob, simply right-click (PC) or Command-Click (Mac) on the knob and then click the Assign Midi CC button that appears. The next midi controller you move will automatically be assigned to the control. You can access more automation features in the "Auto" tab window on the left side of Kontakt. You can also customize and create your own custom presets by using the File Save/Load menu at the top of Kontakt. Just choose a new preset name and save it in the same Instrument folder location to insure that Kontakt can locate all necessary files the next time you load it. All custom control knob settings will be saved with the instrument preset.

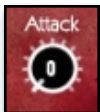
Selector Menu Dropdown

The majority of presets contain this dropdown which is used to select the currently active articulation, be it a chant, staccato, vowel sustain or vocal effect. The articulation can also be changed using the **Black** keyswitches mapped to the lower part of the keyboard.



Swell - (CC 72)

This knob controls the volume swell of the instrument.



Attack - (CC 74)

This knob controls the sharpness of attack. Lower values have more of a pluck sound.



Release - (CC76)

This controls the release time of the main note samples.* Lower settings cause the sound to be damped and cut off, while higher settings allow notes to ring out longer.



Start Offset - (CC78)

This controls the amount of sample start offset allowing you to jump ahead into samples to change the sound. This can also be used to control the amount of "pluck."



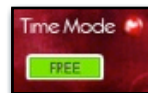
Pitch

This controls the pitch shifting up or down from the natural root pitch of each sample. You can use this knob to transpose the pitch up or down by 24 semitones in half-step increments. You can also use the Pitch Keyswitches to change the pitch via midi.



Release Volume - (CC90)

This controls the volume of release samples only. These samples play when the last note of a string is released. The small glowing radio button toggles Release Samples on/off if you don't want them to play at all.



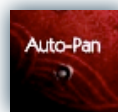
Sync/Free Button

In the main (non-lite) presets, this button toggles tempo-syncing on and off. When off, the "Stretch" knob can be used to control playback speed. When the red enable/bypass button to the right is off, the instrument reverts to sampler mode and playback returns to the natural source speed, for best audio quality.



Stretch - (CC92)

This knob, active only in "Free" mode, changes the playback speed of samples using Kontakt's TPro engine. Lower values are slower and higher values are faster with 64 being normal speed.



Auto-Pan

This special mode for sustains & staccatos simulates an ensemble effect. When active, a single note will play at the default pan position. Each additional note will be placed in the stereo field at wider position, with increasing variability as voices are added.

Waveform Window

This window displays the actual waveform and playback position of the most recently triggered sample. In most presets, the interactive blue "O" marker shows the sample start position and is linked to the "Offset" knob. When the Sequencer is active, the Green "S" and Orange "E" marker are shown instead (not included in "Lite" presets). These interactive sliders display the sample playback start end position for the currently selected sequencer step. This visual feedback makes customizing phrases easier.

Mic 1 & Mic 2 Mixer Controls

The two microphone types can be independently adjusted, with pan sliders, volume knobs and active/bypass buttons for each microphone channel.



Legato Controls

Legato in Voice of GAIA comes in two varieties: simulated and True Legato. True Legato is just that: we sampled all of the interval transitions between notes (up to an octave) and these samples play in between sustains to allow for truly life-like melodic lines. The simulated legato system allows you to tie notes together as you play an uninterrupted melody. In natural instruments, notes blend together slightly as a performer changes between pitches. This creates a natural smoothing effect. This effect is simulated by our custom system to give them a more life-like quality to presets that lack True Legato. A number of controls are provided to modify and configure both legato systems, both of which have very similar controls. To enable legato, simply press the "Legato" button so it glows.

To automatically trigger legato transitions in your performances, enable the legato system by turning on the legato on/off button for the layer you would like to use. Then, play a note and hold it. Now play a new note close to it on the keyboard without letting go of the old note until the new note has started. This short time overlap tells the program that you wish to perform a legato transition instead of releasing the old note and starting the new note.

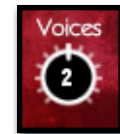
Legato On/Off

This button turns legato on/off.



Voices

Voice of Gaia features full three-voice polyphonic legato for both types of legato (True and simulated). This knob controls the number of polyphonic voices for each layer.



Range

This knob controls the interval range within which a legato transition will occur. When used with Polyphony, any legato transition played greater than this setting will trigger another legato voice.



Speed

In presets with Simulated Legato, the Speed knob controls the speed of the artificial pitch bend when it is enabled. In true Legato presets, this knob controls the speed of the actual transition sample. When turned all the way down, the bend is slow; turned all the way up, the bend is fast.



Intensity

This knob controls the intensity of the simulated legato bend and the volume of the true Legato transition sample. This can be used to fine tune the sound of the legato transition.



Play Mode

This button toggles the sustain between an **infinite** looping mode for holding notes indefinitely and playing long legato passages, or the more **natural** non-looping note decay mode, for more realistic and nuanced / humanized performances.



TIPS:

Time Stretching

All non-lite presets feature some sort of tempo-syncing or time-stretching functionality. Some settings or natural frequency components in certain samples may cause acoustic artifacts and distortions due to algorithmic limitations. Time Machine Pro is also quite CPU intensive, so some users may experience CPU spikes.

Custom Control Automation

If you wish to save the knob values in the preset after changing them, save the preset. The values will be loaded the next time you open the preset. To reset a knob to its default position, simply Right Click on the knob with your mouse (Command Click for Mac). You can also assign any midi controller or host automation envelope to any of the knobs and buttons by using the automation assignment menu on the left side of Kontakt, under the "Auto" tab in the Browser area. Just click on the CC number you want to assign and drag your cursor onto the knob or button you want to automate while holding down your mouse button. Then set the "From %" and "To %" values to the min and max value range you want the automation to stay within. Setting the From % value higher than the To % value will invert the direction of the automation. To remove the automation from a control, press the Remove button at the bottom.

Preset Types

Voice of GAIA is designed to work in Kontakt 5.1.0 or later. There are Legato, Phrase, Staccato, Sustain and Vocal Effect presets, as well as Lite versions of each preset in the Lite subfolder and 3 special FX sound designed presets in the Ambiences folder. The primary presets offer the best performance-quality ratio; with full sample start offset range, optional tempo-syncing and/or time-stretching features and more. “Lite” presets are included for users who wish to use fewer system resources, but these have some features disabled.

True Legato

The Legato preset types include the True Legato articulations recorded -- Ah (with vibrato) and Oo (without vibrato). All interval transitions were recorded up to an octave from each starting root, but you can artificially extend the legato range and use a variety of other GUI controls to shape the sound.



Swell - (CC 72)

This knob controls the volume swell of the instrument.

Attack - (CC 74)

This knob controls the sharpness of initial note attack. Higher values soften the attack.

Offset - (CC78)

This controls the amount of sample start offset allowing you to jump ahead into samples to change the sound and bypass syllables. This knob also moves the green marker in the waveform window.

Release - (CC76)

This knob controls the release time of notes when. Please keep in mind that this library was recorded in a vocal booth, so the maximum release time is short.

Release Volume - (CC90)

This controls the volume of release samples only. The small glowing radio button toggles Release Samples on/off if you don't want them to play at all.

Legato

This button turns on/off True Legato.

Speed

This knob controls the speed of legato transitions.

Intensity

This knob controls the volume level of the transition portion of the legato samples. In the True Legato presets, this effect is very subtle and is mainly intended for use in the simulated legato in the sustain presets.

Voices

This knob controls the amount of polyphony allowed during legato.

Range

This knob controls the interval range in which legato occurs. Notes played outside this range trigger a new legato voice.

Play Mode

This button toggles the sustain between an **infinite** looping mode for holding notes indefinitely and playing long legato passages, or the more **natural** non-looping note decay mode, for more realistic and nuanced / humanized performances.

Waveform Window

Provides a visual representation of the current sample as well as the sample start position using the green “s” marker. See Page 5 for more information.

Mic 1 & Mic 2 Enable/Bypass Buttons

Turns on and off the primary microphone channel. Disabling a channel unloads its samples from ram. Do not play back a note while a channel is being loaded or unloaded, as this can cause problems in Kontakt.

Mic 1 & Mic 2 Pan Sliders

Adjusts the stereo position of each microphone channel.

Mic 1 & Mic 2 Volume Knobs

Adjusts the volume of each microphone channel.

Live Performance Phrases

The Phrase presets contain different categories of long and short live vocal performance phrases. We captured Pure Vowel Phrases in a variety of styles, modes and dynamics. Rooted naturally at approximately 80, 100, 120 and 140 bpm, we recorded Linda performing improvised short lines and phrases in the keys of A#, C, D, E, F# and G#. These keys represent the key that the performance was in, but each phrase may span different pitches relative to the parent root key it was recorded to. Because you can transpose each phrase up or down, these generalized variations provide a lot more flexibility and compatibility with a broader spectrum of material. In the Tempo-Sync version of these presets, you can use the SYNC setting to lock the playback speed to your project tempo or Kontakt's internal tempo setting. In FREE mode, you can use the Stretch knob to speed up or slow down playback freely in realtime.



Key/Bpm Sample Set Selection Menu

This menu chooses the current staccato vowel and/or dynamic. You can also use the Song Keyswitches to select the current sound set.

Swell - (CC 72)

This knob controls the volume swell of the instrument.

Attack - (CC 74)

This knob controls the sharpness of initial note attack. Higher values soften the attack.

Offset - (CC78)

This controls the amount of sample start offset allowing you to jump ahead into samples to change the sound and bypass syllables. This knob also moves the green marker in the waveform window.

Release - (CC76)

This knob controls the release time of notes when. Please keep in mind that this library was recorded in a vocal booth, so the maximum release time is short.

X-Fade On/Off

This button turns on/off Simulated Legato between phrases.

X-Fade

This knob controls the speed and intensity of the simulated legato blending between phrases.

Pitch

This knob allows you to shift the playback pitch of the phrases up or down in semi-tone intervals. You can also use the Pitch Keyswitches to change this setting.

Stretch - (CC92)

When in "Free" mode, this knob controls the speed of sample playback by utilizing Kontakt's Time Machine engines. Low values equate to a slower playback speed and higher values to faster, with 64 being the default 100% playback speed.

Time Mode Button

This enables the time-stretching engine for tempo-syncing and time stretching control. When this is off, the Sampler engine is used, for a higher quality more natural sound at the originally recorded playback speed.

Sync/Free Button

This button toggles the instrument between tempo-syncing and freely time-stretchable modes when the Time Mode button is turned on.

Keyswitch Controls

These controls can be used to set the keyboard location of the phrase group selection menu quick-keys and the pitch transposition keyswitches. You can move these switches to any midi key you wish by clicking in the value range to manually edit them or by pressing the SET button and then playing the midi note you would like the key-switches to start from. See Page 17 for details.

Waveform Window

Provides a visual representation of the current sample as well as the sample start position using the green "s" marker. See Page 5 for more information.

Sequencer Panel (Phrase presets)

All Phrase presets also feature a powerful phrase step sequencing system that makes using them even easier. This system allows you to sequence any 32 phrases for the currently selected Key root category and trigger them using the master Sequencer keyswitch. This advances playback through your sequence, based on the “Sequencer Flow” setting you’ve chosen from the menu. You can add or remove steps with the “Steps” value field and jump forward or backward between steps with the “Current Step” knob. You can also shorten the start position (Green “S” Marker & “Start” knob) and duration (Orange “E” marker and “End” knob) of each phrase to play just specific sections of a phrase. You can even load and save your own custom sequence presets using the Save and Load icon buttons.



Sequencer On/Off Button

This enables/bypasses the Sequencer panel. Clicking the Sequencer label hides the panel. Click it again to open it again.

Sequencer Flow

This menu determines the direction of the step sequencer playback order as the Master Trigger Key is pressed each time. Your options are:

FWD I-Shot (single play-through with continuous playback of all steps while the trigger key is held, flowing left to right in the sequence).

FWD Loop (continuously loops through the sequence from left to right as long as the trigger key is held down).

FWD Step advances by a single step with each trigger key press for more controlled playback.

BWD I-Shot (single play-through with continuous playback of all steps while the trigger key is held, flowing from right to left).

BWD Loop (continuous looping right to left while the trigger key is held down), **BWD Step** (single play-through with continuous playback of all steps while the trigger key is held, flowing right to left in the sequence).

Random (random playback as long as the trigger key is down).

Knob Follow, which will only play the step that matches the Current Step knob value at any given time. Use the Knob Follow option if you wish to automate the playback sequence by attaching a CC or host envelope to the Current Step knob.

Current Step

This knob sets the current sequence step that will play when the Master Trigger Key is played. You can also click on a step in the sequencer grid to select it for playback or editing.

Step Options area

You can click on any step in the sequencer grid to select it for editing and adjust Start, End and Pitch settings for each step.

Start (Step Options)

This knob sets the Phrase Start Marker and determines where the sample will start, measured as a percentage of total sample duration. It is linked to the interactive “S” marker in the waveform display.

End (Step Options)

This knob sets the Phrase End Marker and determines where the sample will end, measured as a percentage of total sample duration. It is linked to the interactive “E” marker in the waveform display.

Pitch (Step Options)

This knob sets the pitch for each step.

Steps

This sets the total number of sequence steps in the grid.

Step Sequencer Grid

This allows up to 32 sequence steps. To change the phrase assignment for a step, double click on it and type in a new value or use the up/down arrow buttons that appear. The Current Step is highlighted in red, indicating that it is ready to play as soon as you press the Trigger Key (B4)

“S” Phrase Start Marker

This interactive marker shows where the currently playing phrase will start.

“E” Phrase End Marker

This interactive marker shows where the currently playing phrase will end.

Master Trigger Key - (midi note B4)

Playing this key (midi note number 71 / B4) will trigger the currently highlighted phrase in your step sequence (“Current Step”), and then advance to the next phrase step according to the Sequencer Flow setting you’ve chosen. See Page 17.

Save Button

This button lets you save your current step sequence to an nkp file on your hard drive.

Load Button

This button lets you load a previously saved step sequence from an nkp file on your hard drive.

Staccatos

The Staccato presets includes 4 pure vowel single-syllable staccatos with a root BPM of 140 and 4 round-robin variations per note. The Ah and Oh vowels additionally feature dual piano and forte dynamic layers. You can use the Offset, Attack and Release controls to reshape these staccatos, to make them tighter or more relaxed. This method allows the widest range of creative options in a single efficient instrument bank.



Vowel Selector Menu

This menu chooses the current staccato vowel and/or dynamic. You can also use the Keyswitches to select the current sound.

Swell - (CC 72)

This knob controls the volume swell of the instrument.

Attack - (CC 74)

This knob controls the sharpness of initial note attack. Higher values soften the attack.

Release - (CC76)

This knob controls the release time of notes when. Please keep in mind that this library was recorded in a vocal booth, so the maximum release time is short.

Offset - (CC78)

This controls the amount of sample start offset allowing you to jump ahead into samples to change the sound and bypass syllables. This knob also moves the green marker in the waveform window.

Stretch - (CC92)

When in "Free" mode, this knob controls the speed of sample playback by utilizing Kontakt's Time Machine engines. Low values equate to a slower playback speed and higher values to faster, with 64 being the default 100% playback speed.

Stretch/Normal Mode Button

This button toggles the instrument between time-stretching and normal sampler mode, which plays back at the originally recorded speed.

Auto-Pan

This special mode simulates a wider stereo field when multiple notes are played at once to help simulate an ensemble. When active, a single note will play at the default center pan position. Each additional note will be placed in the stereo field at a semi-random locations, with increasing variability as more voices are played.

Keyswitch Controls

These controls can be used to set the position of the vowel selection keys-witches. See Page 17 for details.

Waveform Window

Provides a visual representation of the current sample as well as the sample start position using the green "S" marker. See Page 5 for more information.

Mic 1 & Mic 2 Enable/Bypass Buttons

Turns on and off the primary microphone channel. Disabling a channel unloads its samples from ram. Do not play back a note while a channel is being loaded or unloaded, as this can cause problems in Kontakt.

Mic 1 & Mic 2 Pan Sliders

Adjusts the stereo position of each microphone channel.

Mic 1 & Mic 2 Volume Knobs

Adjusts the volume of each microphone channel.

Vowel Sustains

The sustains presets contain 5 different sustaining vowels (Ah, Mm, Oh and Oo). The Ah and Oh vowels come in both forte and piano dynamic variants. The Oo and Mm sustains are included in a mezzo-piano dynamic.



Vowel Selector Menu

This menu chooses the current staccato vowel and/or dynamic. You can also use the Keyswitches to select the current sound.

Swell - (CC 72)

This knob controls the volume swell of the instrument.

Attack - (CC 74)

This knob controls the sharpness of initial note attack. Higher values soften the attack.

Offset - (CC78)

This controls the amount of sample start offset allowing you to jump ahead into samples to change the sound and bypass syllables. This knob also moves the green marker in the waveform window.

Release - (CC76)

This knob controls the release time of notes when. Please keep in mind that this library was recorded in a vocal booth, so the maximum release time is short.

Release Volume - (CC90)

This controls the volume of release samples only. The small glowing radio button toggles Release Samples on/off if you don't want them to play at all.

Legato

This button turns on/off Simulated Legato.

Speed

This knob controls the speed of legato transitions.

Intensity

This knob controls the volume level of the transition portion of the legato samples.

Voices

This knob controls the amount of polyphony allowed during legato.

Range

This knob controls the interval range in which legato occurs. Notes played outside this range trigger a new legato voice.

Play Mode

This button toggles the sustain between an **infinite** looping mode for holding notes indefinitely and playing long legato passages, or the more **natural** non-looping note decay mode, for more realistic and nuanced / humanized performances.

Waveform Window

Provides a visual representation of the current sample as well as the sample start position using the green "s" marker. See Page 5 for more information.

Mic 1 & Mic 2 Enable/Bypass Buttons

Turns on and off the primary microphone channel. Disabling a channel unloads its samples from ram. Do not play back a note while a channel is being loaded or unloaded, as this can cause problems in Kontakt.

Mic 1 & Mic 2 Pan Sliders

Adjusts the stereo position of each microphone channel.

Mic 1 & Mic 2 Volume Knobs

Adjusts the volume of each microphone channel.

Vocal Effects

The vocal effect presets contain a variety of common vocal effects, including whispers, a huge range of breaths at different intensities, throat-clearing, coughs, laughs and other common natural voice sounds.



Effect Sound Set Selection Menu

This menu chooses the current staccato vowel and/or dynamic. You can also use the Keyswitches to select the current sound.

Swell - (CC 72)

This knob controls the volume swell of the instrument.

Attack - (CC 74)

This knob controls the sharpness of initial note attack. Higher values soften the attack.

Release - (CC76)

This knob controls the release time of notes when. Please keep in mind that this library was recorded in a vocal booth, so the maximum release time is short.

Offset - (CC78)

This controls the amount of sample start offset allowing you to jump ahead into samples to change the sound and bypass syllables. This knob also moves the green "S" (sample start) marker in the waveform window.

Release Volume - (CC90)

This controls the volume of release samples only and only effects samples that have sustaining loops with release-triggered samples. The small glowing radio button toggles Release Samples on/off if you don't want them to play at all.

Pitch

This knob controls the playback pitch of the sample up or down in semi-tone steps.

Stretch - (CC92)

When the On/Off switch next to it is activated, this knob controls the speed of sample playback by utilizing Kontakt's Time Machine engines. Low values equate to a slower playback speed and higher values to faster, with 64 being the default 100% playback speed.

Keyswitch Controls

These controls can be used to set the position of the articulation key-switches. See Page 17 for details.

Waveform Window

Provides a visual representation of the current sample as well as the sample start position using the green "s" marker. See Page 5 for more information.

Mic 1 & Mic 2 Pan Sliders

Adjusts the stereo position of each microphone channel.

Mic 1 & Mic 2 Volume Knobs

Adjusts the volume of each microphone channel.

FX Rack

The FX Rack tab contains our advanced, flexible FX Rack that integrates many of Kontakt's built-in effects. The following section describes all of the available effects. The FX Rack is accessible by clicking on the second UI tab at the bottom of the UI labeled "FX Rack."



Effect Types and Controls

Mod Controls

The Mod FX module features Chorus, Flanger and Phaser effects.

Power Button -

Toggles the effect on and off.

Dropdown -

Use this dropdown menu to select the active effect.

Rate -

This knob controls the Rate of the selected effect.

Feedback -

This knob (not available in Chorus mode) control the amount of feedback for the active effect.



Phase -

This knob controls the Phase of the active effect.

Depth -

This knob controls the depth (intensity) of the selected effect.

Mix -

This knob controls the amount of wet and dry output of the effect. Values left-of-center reduce the wet level, while values right-of-center keep wet levels the same but reduces the dry level.

Dynamics Controls

The Dynamics FX module is a configurable compressor.

Power Button -

Toggles the effect on and off.

Threshold -

This knob controls the volume threshold of the compressor.

Ratio -

This knob controls the ratio of the compressor. The value is displayed to the right.



Attack -

This knob controls the attack time of the compressor.

Release -

This knob controls the release time of the compressor.

Makeup -

This knob controls the makeup of the compressor.

FX Rack continued...

Drive Controls

The Drive FX module features a variety of distortions: Distortion, Screamer, Tape Saturator and De-Rez (Lo-Fi).



Power Button -

Toggles the effect on and off.

Dropdown -

Use this dropdown menu to select the active distortion effect.

Drive -

This knob controls the amount of the distortion effect.

Volume -

This knob controls the output level of the distortion effect.

Degrade -

This knob (only available in De-Rez mode) control the amount of bit crushing that the Lo-Fi effect does.

Lows -

This knob (when available) controls the level of low (bass) frequencies.

Highs -

This knob (when available) controls the level of high (treble) frequencies.

Tone -

This knob (only in Screamer mode) controls the tone level of the Screamer effect.

Amp Controls

The Amp FX module is a configurable amp simulation effect. It includes the "Twang" and new "Jump" (Kontakt 5 only) amp simulators.



Power Button -

Toggles the effect on and off.

Dropdown -

Use this dropdown to select between the available amp types: twang and jump.

Volume -

This knob controls the volume output level of the amp sim.

Drive -

This knob controls the amount of extra gain on the amp simulator.

Lows -

This knob controls gain of low (bass) frequencies.

Mids -

This knob controls the gain of mid-level frequencies.

Highs -

This knob controls the gain of high (treble) frequencies.

Boost Button -

This button (only available in the Jump amp sim) toggles HiGain mode on and off. The Volume is adjusted -9dB when activated to maintain relative volume while increasing the drive.

Presence -

This knob (only available in the Jump amp) adjusts the presence of the effect.

Cab Controls

The Cab FX module is a configurable cabinet (speaker) simulation effect.



Power Button -

Toggles the effect on and off.

Dropdown -

Use this dropdown to select between the available cabinet types including the Rotator cabinet effect..

Volume -

This knob controls the volume output level of the cabinet sim.

Air -

This knob controls the amount of the "Air" in the cabinet effect, simulating distance between the virtual mic and cab.

Size -

This knob controls size of cabinet effect, effectively the size of the simulated cabinet.

Fast Button -

This button (available only with the Rotator cabinet type) toggles the rotation effect of the cabinet from slow to fast.

FX Rack continued...

Delay Controls

The Delay FX module is a configurable Delay effect.

Power Button -

Toggles the effect on and off.

Rate -

This knob controls the time between delays. Higher values mean a longer time between delays, creating a more pronounced echo.

Damping -

This knob controls the damping of the delay effect, which attenuates and damps each successive echo.

Pan -

This knob controls the amount of stereo panning of the delay effect.



Feedback -

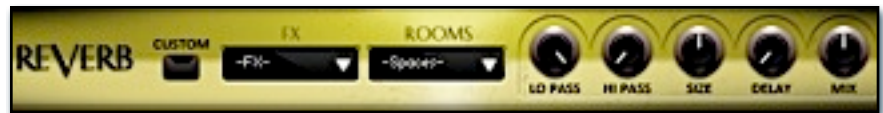
This knob controls the feedback of the delay effect. High values can cause an endless loop.

Mix -

This knob controls the amount of wet and dry output of the effect. Values left-of-center reduce the wet level, while values right-of-center keep wet levels the same but reduce the dry level.

Reverb Controls

The Reverb FX module allows users to load reverb impulses to simulated real-world spaces or effects. See Page 3 for details.



Power Button -

Toggles the effect on and off.

Custom Button

Turning this "On" bypasses the our built-in impulses so you can save presets with your own impulses in the Insert FX module through Kontakt's Editor view.

FX Menu

This menu allows you to select one of our special effect convolutions. Selecting an impulse from this menu overrides and unloads any currently loaded impulse from the Spaces menu.

Rooms Menu

This menu allows you to select one of our real-world environmental convolutions. Selecting an impulse from this menu overrides and unloads any currently loaded impulse from the Effects menu.

Lo Pass

Sets the low frequency cut-off of the impulse response, allowing you to dull and darken the sound.

Hi Pass

Sets the high frequency cut-off of the impulse response, allowing you to remove rumble and low end.

Size

Sets the simulated room size of the convolution.

Delay

Sets the amount of pre-delay time before the wet signal is returned

Mix

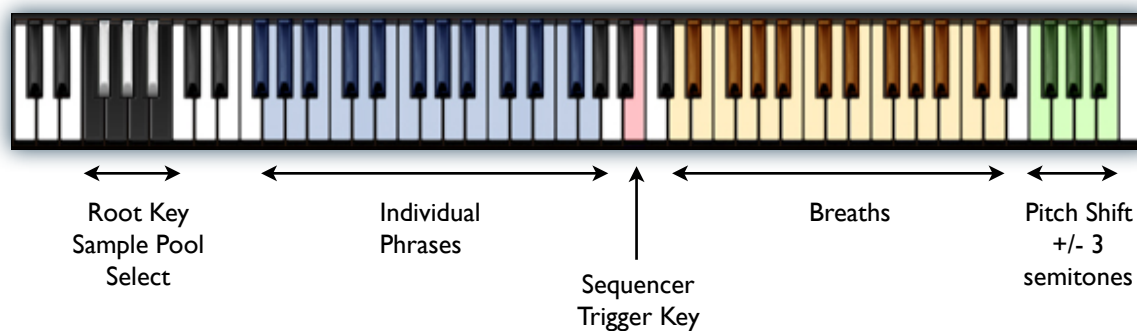
This knob controls the amount of wet and dry output of the effect. Values left-of-center reduce the wet level, while values right-of-center keep wet levels the same but reduce the dry level.

Keyswitch Reference

Voice Of Gaia: Strawberry contains keyswitch functionality in every preset. Keyswitches allows users to quickly change an articulation or instrument parameter by pressing a key on a midi keyboard. Placement and on/off state for every keyswitch is configurable. The following sections goes over the major keyswitches and how they are represented visually on Kontakt's built-in keyboard.

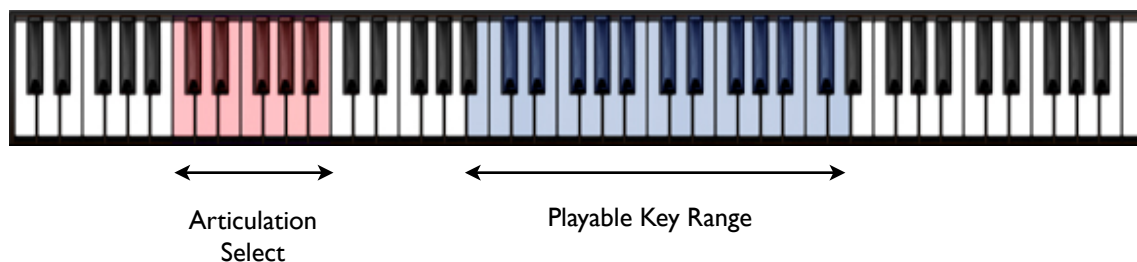
Phrase Presets

In the phrase presets, 5 key switch color zones are displayed on Kontakt's built-in keyboard. The **Blue** playable range in the center shows the individual phrases that are mapped for this current root key sample set. The **Black & White** range switches between available root key sample sets. The **Red** key is the Master Trigger Key for the Sequencer. Pressing this will cause the sequencer to play, according to the settings currently shown in the Sequencer panel at the top of the GUI. You can click on the Sequencer label to reveal the Sequencer panel if it is currently hidden. The **Yellow** color is where the natural breaths are mapped for each Root Key's sample pool. The **Green** keys shift the playback pitch up or down by up to +/- 3 semitons. The key in the center of that displayed range restores playback to the default natural pitch.



Standard Chromatic Presets

In the sustain, polysustain, poly-staccato, true legato and other common non-phrase presets, there are only **2** key switch color zones are displayed on Kontakt's built-in keyboard. The **Blue** playable range in the center shows the playable chromatic key range of the instrument, typically from B2 - D5. The **Red** key is the Articulation selector that allows you to switch between different vowels, chants, syllables or effect types, depending on the specific preset.



Preset List

** Please note that all presets listed are designed to be used with Kontakt 5.1.0 or higher. Lite version of all presets are also included. These are less CPU- and memory-intensive, but they lack certain memory and CPU intensive features such as phrase sample offset, start, and end timing control and time-stretching/synching options.

Phrases Organized By BPM...

Phrases 80 BPM - Tempo-Sync.nki

This is the pure vowel melodic live performance phrase preset for samples rooted at a natural 80 bpm, with sets organized into keys (A#, C, D, E, F, F#, G, G#) complete with our special phrase sequencer system. Key mapping and placement depends on the articulation you select. You can tempo-sync or stretch the phrases with the Kontakt TM Pro engine, but the samples sound best close to their nature playback speed. Please see pages 9 - 10 for info about the controls for this preset.



Phrases 100 BPM - Tempo-Sync.nki

This is the pure vowel melodic live performance phrase preset for samples rooted at a natural 100 bpm, with sets organized into keys (A#, C, D, E, F, F#, G, G#) complete with our special phrase sequencer system. Key mapping and placement depends on the articulation you select. You can tempo-sync or stretch the phrases with the Kontakt TM Pro engine, but the samples sound best close to their nature playback speed. Please see pages 9 - 10 for info about the controls for this preset.



Phrases 120 BPM - Tempo-Sync.nki

This is the pure vowel melodic live performance phrase preset for samples rooted at a natural 120 bpm, with sets organized into keys (A#, C, D, E, F, F#, G, G#) complete with our special phrase sequencer system. Key mapping and placement depends on the articulation you select. You can tempo-sync or stretch the phrases with the Kontakt TM Pro engine, but the samples sound best close to their nature playback speed. Please see pages 9 - 10 for info about the controls for this preset.



Phrases 140 BPM - Tempo-Sync.nki

This is the pure vowel melodic live performance phrase preset for samples rooted at a natural 140 bpm, with sets organized into keys (A#, C, D, E, F, F#, G, G#) complete with our special phrase sequencer system. Key mapping and placement depends on the articulation you select. You can tempo-sync or stretch the phrases with the Kontakt TM Pro engine, but the samples sound best close to their nature playback speed. Please see pages 9 - 10 for info about the controls for this preset.

Phrases Organized By Root Key...

Phrases A# BPM - Tempo-Sync.nki

This version of the Phrase system organizes the phrases by root Key (A#), with included sets for 80, 100, 120 and 140 bpm native tempos. Please see pages 9 - 10 for info about the controls for this preset.

Phrases C BPM - Tempo-Sync.nki

This version of the Phrase system organizes the phrases by root Key (C), with included sets for 80, 100, 120 and 140 bpm native tempos. Please see pages 9 - 10 for info about the controls for this preset.

Phrases D BPM - Tempo-Sync.nki

This version of the Phrase system organizes the phrases by root Key (D), with included sets for 80, 100, 120 and 140 bpm native tempos. Please see pages 9 - 10 for info about the controls for this preset.

Phrases E BPM - Tempo-Sync.nki

This version of the Phrase system organizes the phrases by root Key (E), with included sets for 80, 100, 120 and 140 bpm native tempos. Please see pages 9 - 10 for info about the controls for this preset.

Phrases F# BPM - Tempo-Sync.nki

This version of the Phrase system organizes the phrases by root Key (F & F#), with included sets for 80, 100, 120 and 140 bpm native tempos. Please see pages 10 for info about the controls for this preset.

Phrases G# BPM - Tempo-Sync.nki

This version of the Phrase system organizes the phrases by root Key (G & G#), with included sets for 80, 100, 120 and 140 bpm native tempos. Please see pages 9 - 10 for info about the controls for this preset.



Multsampled Chromatic Presets...

Legato Ah.nki

This is the Forte Vibrato “Ah” True Legato vowel sustain preset. The playable key-range is E2 - G4, with a maximum interval distance of 24 semitones. To play with true legato, first start a note and then play a new note while continuing to hold the old note for just a brief moment before releasing it. This tells the system that you wish to play a legato transition. Please see Page 8 for more info about our True Legato controls.

Sustains.nki

This is the standard vowel sustain preset, playable from C2 - C5. You can choose between the different vowel variants, use the simulated legato system and various shaping parameters to sculpt your performance. The Ah and Oh vowels also include both piano and forte dynamics. See Page 12 for info about this preset’s control systems.

Sustains - Pad Mode.nki

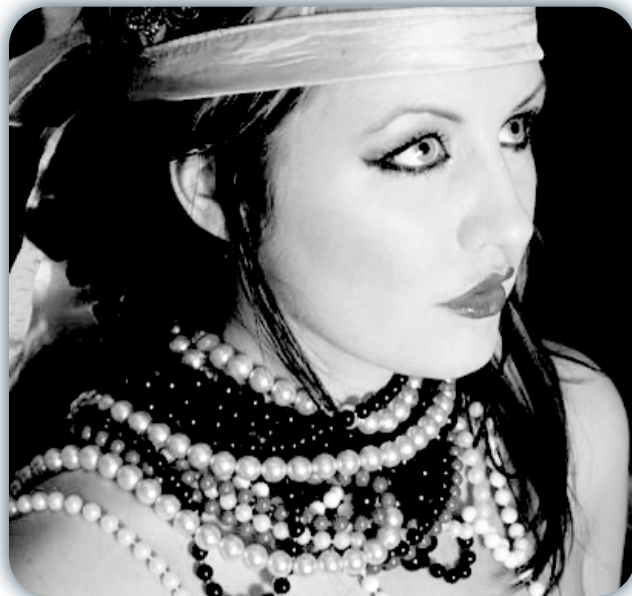
This is the standard vowel sustain preset with a soft pad-like attack and release shape, playable over a super-extended range from F#-2 all the way up to F#8. You can choose between the different vowel variants, use the simulated legato system and various shaping parameters to sculpt your performance. The Ah and Oh vowels also include both piano and forte dynamics. See Page 12 for info about this preset’s control systems.

Staccatos.nki

This is the standard vowel staccato preset, playable from C2 - C5. You can choose between the different vowel variants, speed control and other performance shaping parameters. The Ah and Oh vowels also include both piano and forte dynamics. See Page 11 for info about this preset’s control systems.

Vocal Effects.nki

This preset includes sustaining and staccato whispers, breaths, laughing, throat clearing and various other common vocal sounds and effects. Key mapping and placement depends on the articulation you select. Please see page 13 for info about the controls for this preset.



Ambient Instruments

Ataxicone.nki

This special atmospheric FX preset includes sustaining multi-layered ambiences and soundscapes create by manipulating the original raw vocal source recordings. See Page 12 for info about this preset's control systems.

Gaiazones.nki

This special atmospheric FX preset includes sustaining multi-layered ambiences and soundscapes create by manipulating the original raw vocal source recordings. See Page 12 for info about this preset's control systems.

Urthen.nki

This special atmospheric FX preset includes sustaining multi-layered ambiences and soundscapes create by manipulating the original raw vocal source recordings. See Page 12 for info about this preset's control systems.



SOUNDIRON SOFTWARE LICENSING AGREEMENT

LICENSE AGREEMENT

By installing the product you accept the following product license agreement:

LICENSE GRANT

The license for this product is granted only to a single individual user. No unlicensed use is permitted. All sounds, samples, programming, images, scripting, designs and text contained in this product are copyrights of Soundiron, llc. This software is licensed, but not sold, to you by Soundiron, for commercial and non-commercial use in music, sound-effect creation, audio/video post-production, performance, broadcast or similar finished content-creation and production use. Individual license holders are permitted to install this library on multiple computers or other equipment only if they are the sole owner and only user of all equipment this software is installed or used on.

Soundiron allows you to use any of the sounds and samples in the library(s) you've purchased for the creation and production of commercial recordings, music, sound design, post production, or other content creation without paying any additional license fees or providing source attribution to Soundiron. This license expressly forbids any unauthorized inclusion of any raw or unmixed content contained within this product into any other commercial or non-commercial sample instrument, sound effect library, synthesizer sound bank, or loop or effect library of any kind, without our express prior written consent.

This license also forbids any unauthorized transfer, resale or any other form of re-distribution of this product, or its constituent sounds or programming, through any means, including but not limited to re-sampling, reverse engineering, de-compiling, remixing, processing, isolating, or embedding into software or hardware of any kind, except where included as part of a multimedia production, rendered musical recording, performance or finished work of sound design of at least 8 seconds or more in length. Licenses cannot be transferred or sold to another entity, without written consent of Soundiron, llc.

RIGHTS

Soundiron retains full copyright privileges and complete ownership of all recorded sounds, instrument programming, documentation and musical performances included within this product. All past and future versions of this product, including any versions published or distributed by any other entity are fully bound and covered by this agreement.

REFUNDS

Downloaded libraries can't be returned, so we can't provide refunds or exchanges. We may choose do so at our own discretion, but please be aware that as soon as you've downloaded it, it can not be returned.

RESPONSIBILITY

Using this product and any supplied software is at the licensee's own risk. Soundiron holds no responsibility for any direct or indirect loss arising from any form of use of this product.

TERMS

This license agreement is effective from the moment the product is purchased or acquired by any means. The license will remain in full effect until termination by Soundiron, llc. The license is terminated if you break any of the terms or conditions of this agreement, or request a refund for any reason. Upon termination you agree to destroy all copies and contents of the product at your own expense. All past and future versions of this product, including those released through brands other than Soundiron, are covered under the terms of this agreement.

VIOLATION

Soundiron reserves the right to prosecute piracy and defend this copyrighted work to the fullest extent of US and International civil and criminal law.

THANK YOU.

Thanks for supporting us here at Soundiron and buying the Soundiron Voice Of Gaia: Strawberry library. If you enjoy our creation, we hope you'll also consider checking out some of our other premium virtual instrument libraries as well and spread the word. If you have any questions, troubles, concerns, requests or comments, feel absolutely free to send us an email:

info@soundiron.com

much obliged,

Chris, Mike, Gregg and Linda

