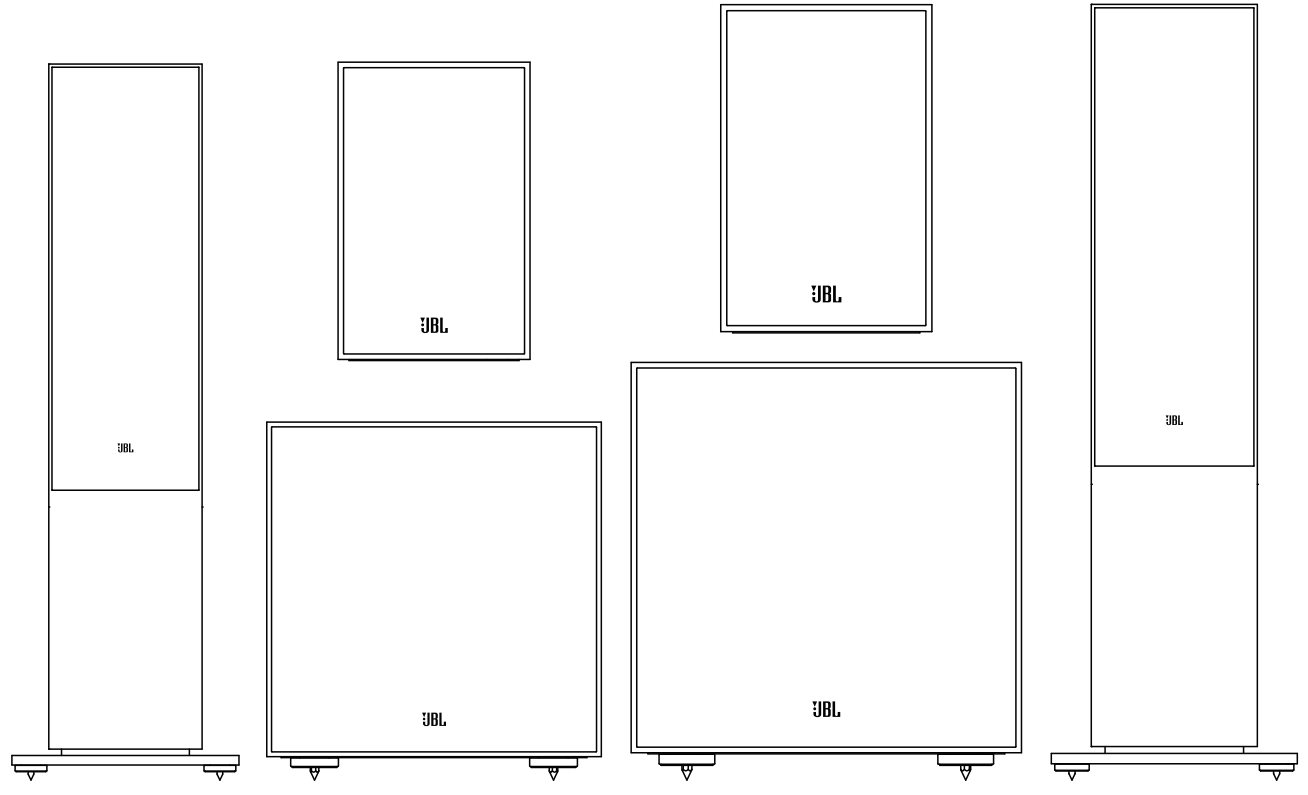
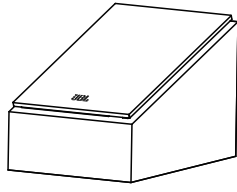
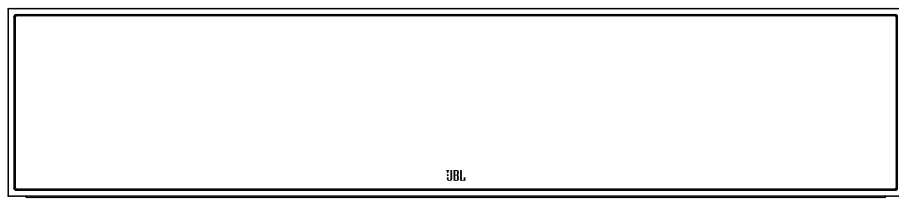


JBL® STAGE 2 SERIES

LOUDSPEAKERS



Thank you for choosing JBL

For more than 75 years, JBL has been providing audio equipment for concert halls, recording studios, and movie theaters around the world and has become the trusted choice of leading recording artists and sound engineers. The Stage 2 Series speakers deliver exceptional audio performance to today's music and movie enthusiasts. This Quick Start Guide will get you up and running quickly. For additional information on the operation of these products, please visit the JBL product page for access to the owner's manual at jbl.com/specialty-audio/

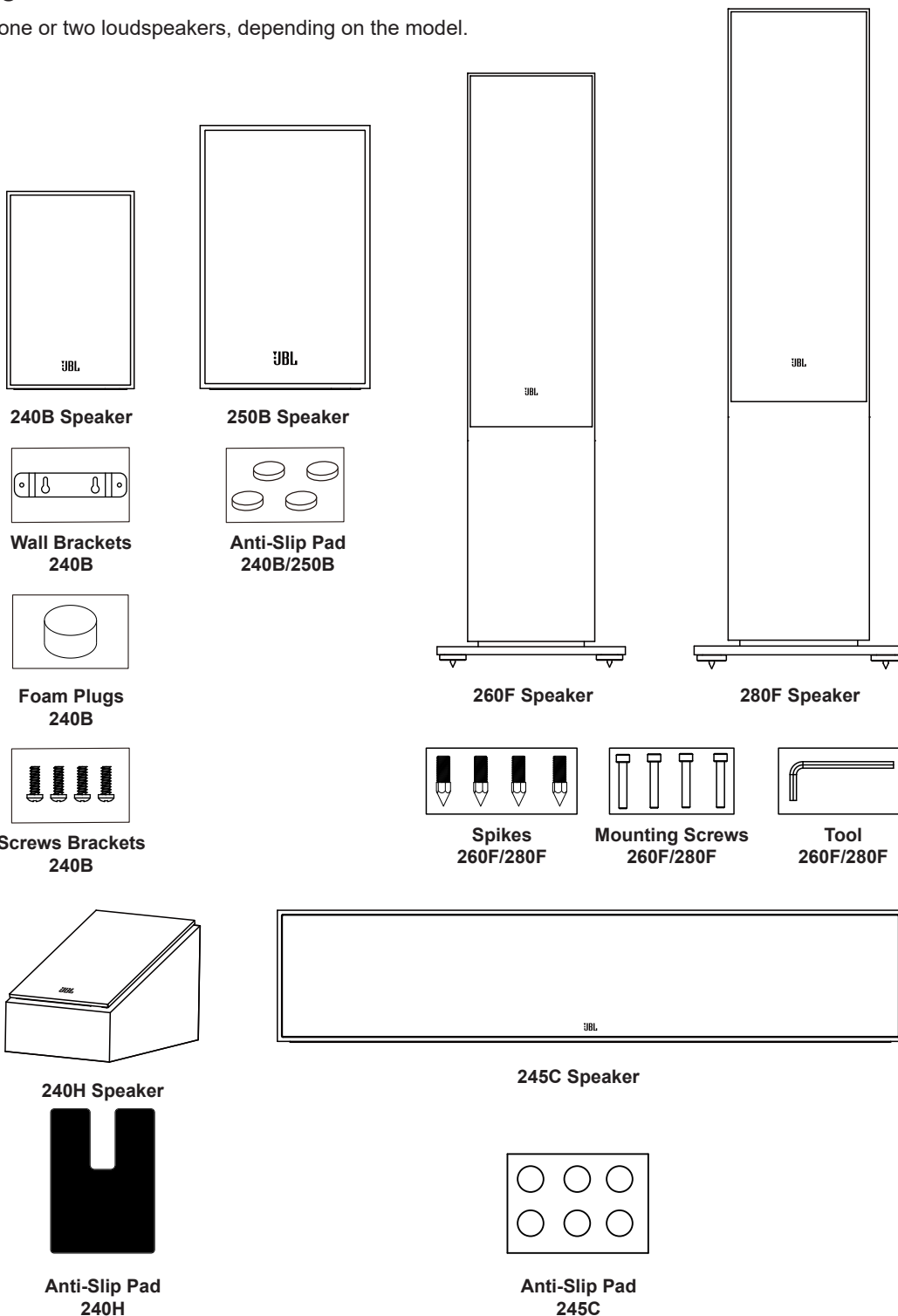
Should further assistance be required feel free to contact our Customer Support at the numbers below:

Inside the US and Canada: +1 888.691.4171

Outside the US and Canada: +44 1707 668 012

Included Items

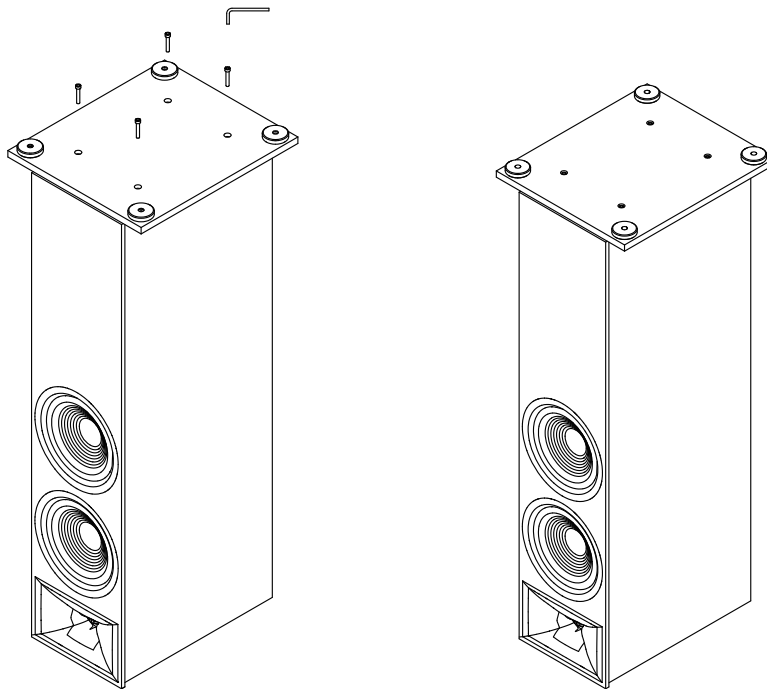
Each box contains one or two loudspeakers, depending on the model.



If you suspect that there has been shipping damage or missing any of the reference above contents, report it immediately to your dealer or contact our Customer Support at the telephone number referenced in the opening introduction.

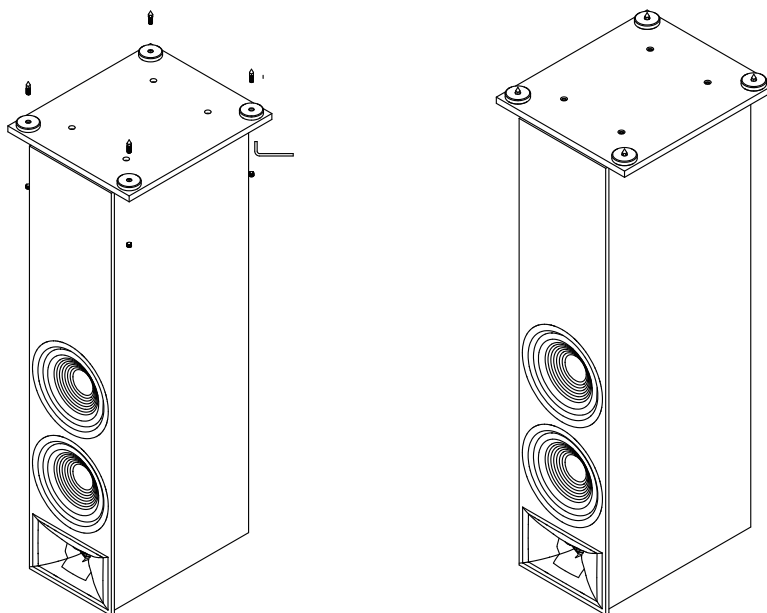
Assembly 280F/260F

1. Remove the box containing the plinth (base), parts and accessories.
2. On a clean, dry surface turn the speaker upside down (with the tweeter at the bottom)
3. Align the plinth (base) with the screw holes located on the bottom of the speaker.
4. Using the 4 mounting screws and the provided tool attach the base to the speaker. Do not over tighten.



Installing the Optional Spikes

1. Place the loudspeaker on its side on a soft surface.
2. Screw the spikes into the fittings on the bottom of the loudspeaker with the spikes facing down.
3. Spikes can be adjusted, and the speaker leveled from the top using the supplied tool.
4. Insert the decorative rubber covers into the top of the holes.

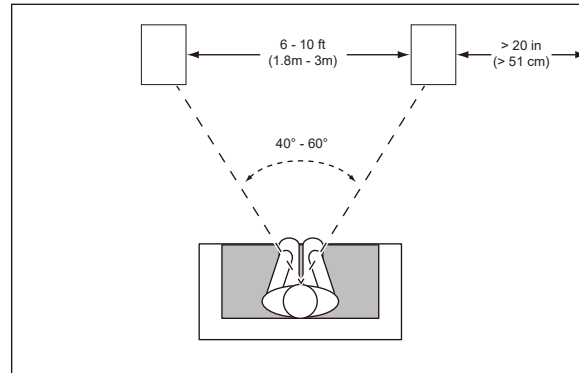


CAUTION: Floorstanding (tower) loudspeakers have a high center of gravity and may become unstable and tip over during earthquakes or if they are rocked, tipped, or improperly positioned. Consider anchoring these speakers to the wall behind them, using procedures and hardware customary for bookcases and wall units. You are responsible for proper installation and proper selection of hardware.

Determine Speaker Location

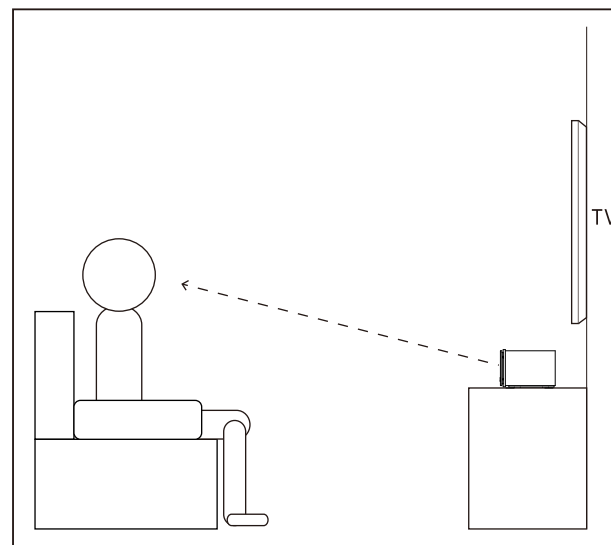
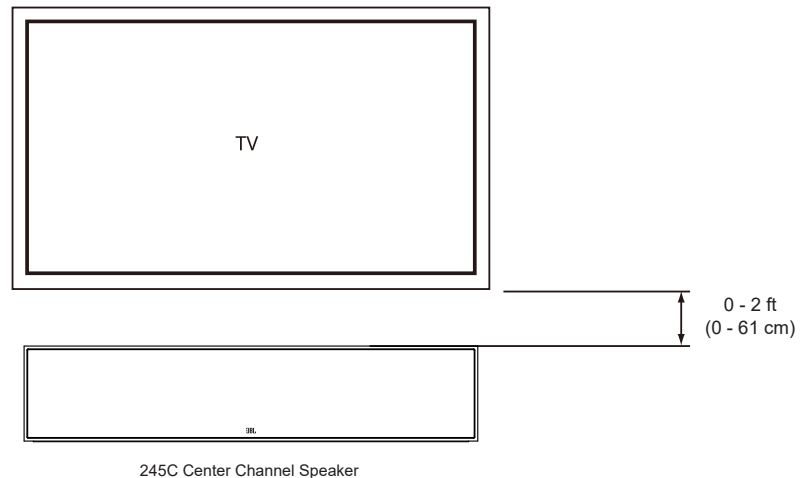
280F/260F Floorstanding Left and Right Channels

For the best results, place the speakers 6 – 10 feet (1.8m – 3m) apart. Angling the speakers toward the listening position improves imaging. The speakers will produce the most accurate soundstage when the angle between the listener and the speakers is between 40 and 60 degrees.



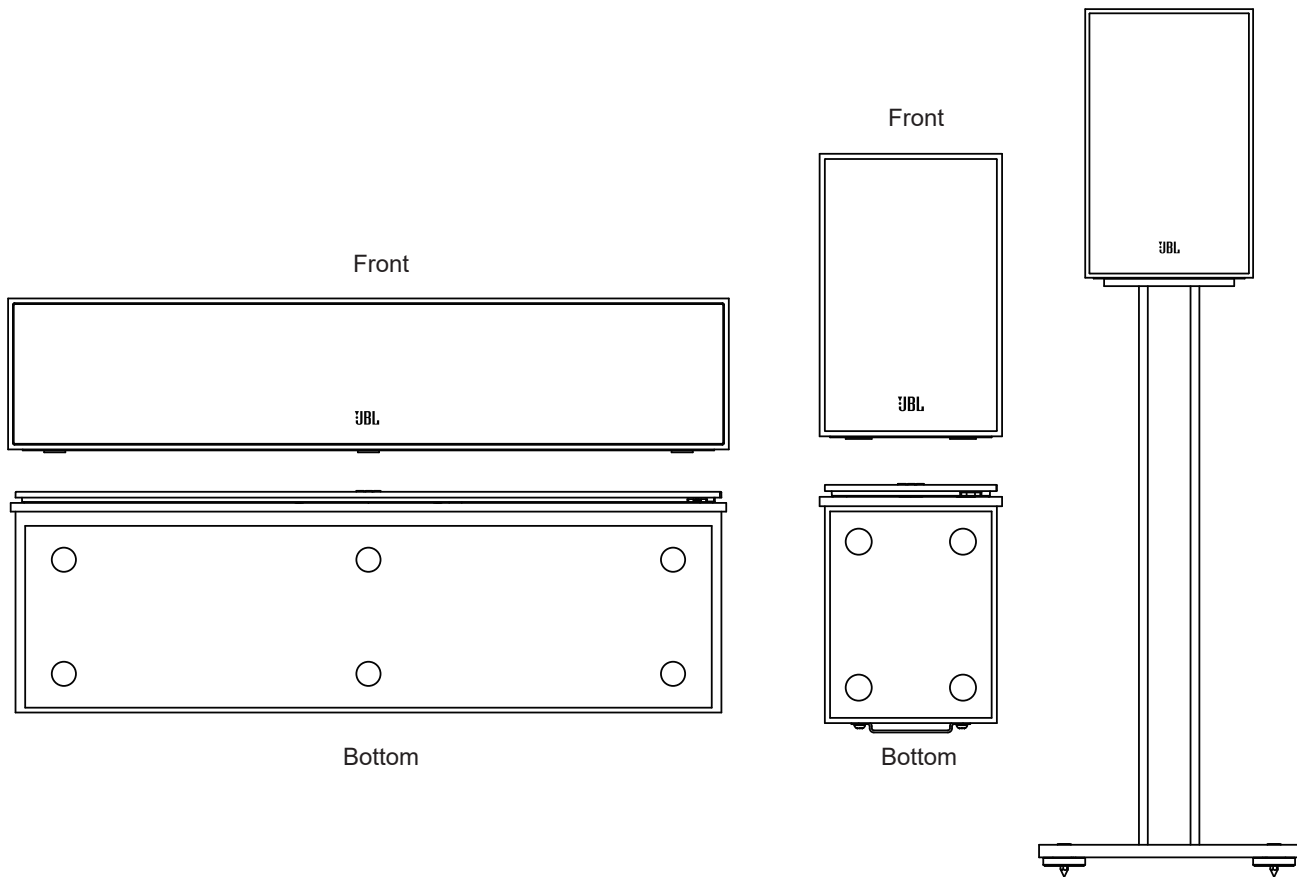
245C Center Channel Speaker

You should place the center channel speaker directly below the center of your display.



Anti-Slip Pad's

Use the included Anti Slip Pads on the 250B/240B and 245C to prevent them from moving. Optional Floorstands for the 250B/240B are available.

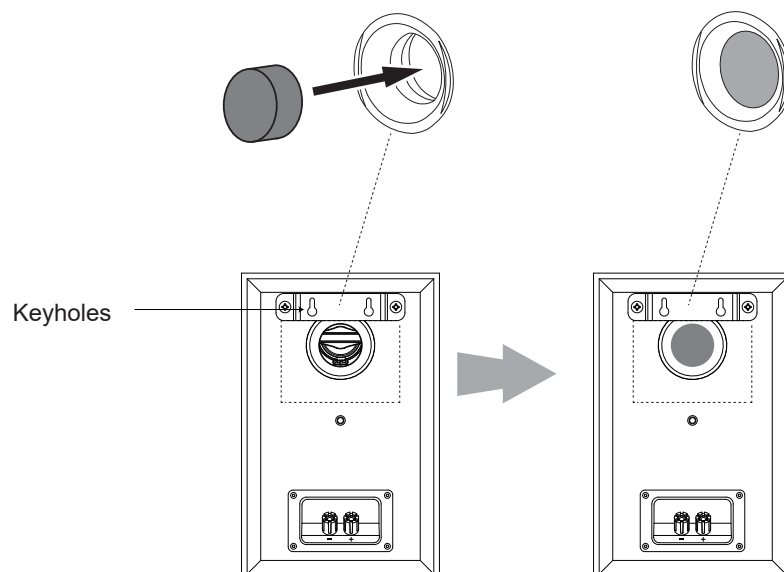


Wall Mounting 240B

The 240B is designed with multiple mounting options. It can be used on a bookshelf, with the optional FL Floorstands, mounted to the wall using the include wall brackets and hardware or utilizing the 1/2-20 threaded insert to use aftermarket mounting brackets.

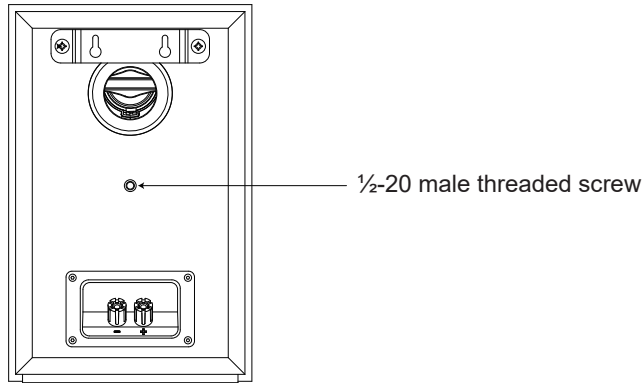
When using the included wall bracket:

- Use the included wall brackets to mark the positions on the wall where you would like to place the mounting screws.
- Mount the include bracket to the rear of each speaker using the included hardware (2 screws).
- Each bracket has two keyholes on the back and will require 2 4.0 x 38mm wood screws or equivalent fastened to a wall stud. If a wall stud is not available install a wall anchor capable of supporting the weight of the speaker and can use 4.0 x 38mm screws.
- Insert the Foam Plug.



When using the aftermarket mounting bracket:

- The 240B can be attached to any surface using an aftermarket bracket with a 1/2-20 male threaded screw.
- Insert the Foam Plug.

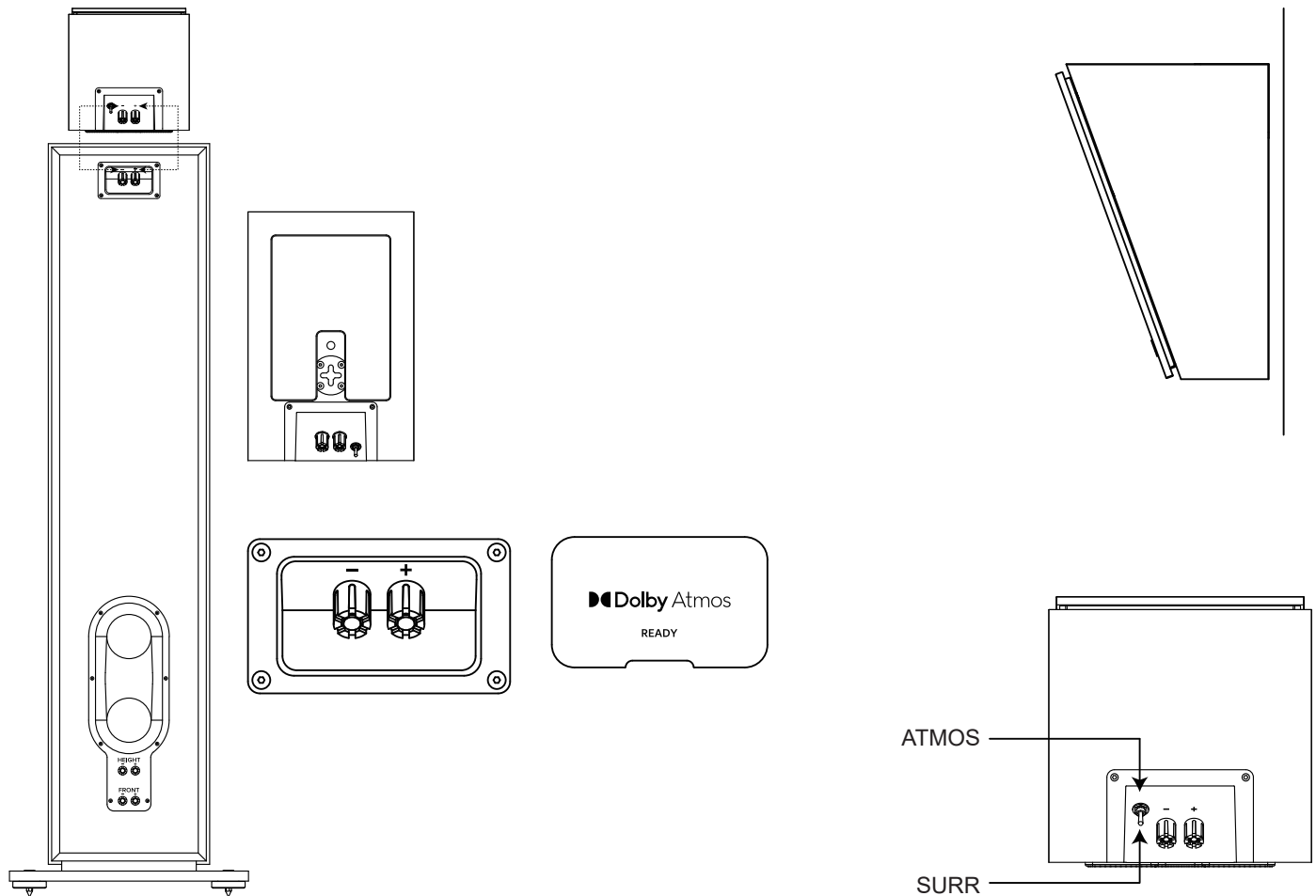


240H Setup and Placement

The 240H is designed with multiple mounting and usage options. It can be used as an Atmos® add on module by placing it on top of the 280F or 260F and using the connection terminals. Set the switch on the terminals to ATMOS. Remove the protective film on the anti-slip pad and attach the bottom of the 240H with the pattern facing out to securely hold it in place.

The 240H can also be used as a surround or elevation speaker by setting the switch by the terminals to SURR. The 240H can be mounted to any surface using the key-hole slots or the 1/2-20 threaded insert to use aftermarket mounting brackets.

Please refer to the Dolby Atmos® speaker setup guides for detailed information. <https://www.dolby.com/about/support/guide/speaker-setup-guides/>

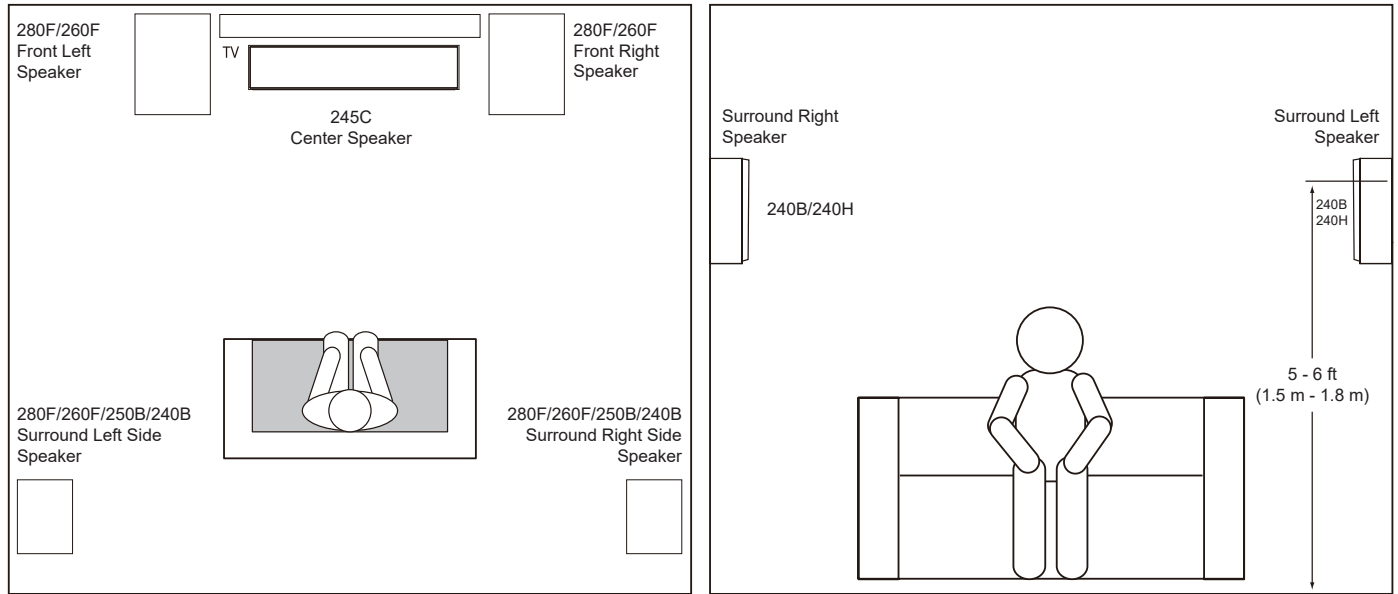


Surround Channel Setup

When you use the 240B, 250B or 240H speakers as surround-channel speakers in a multi-channel system, use the examples below for proper locations or visit <https://www.dolby.com/about/support/guide/speaker-setup-guides/>

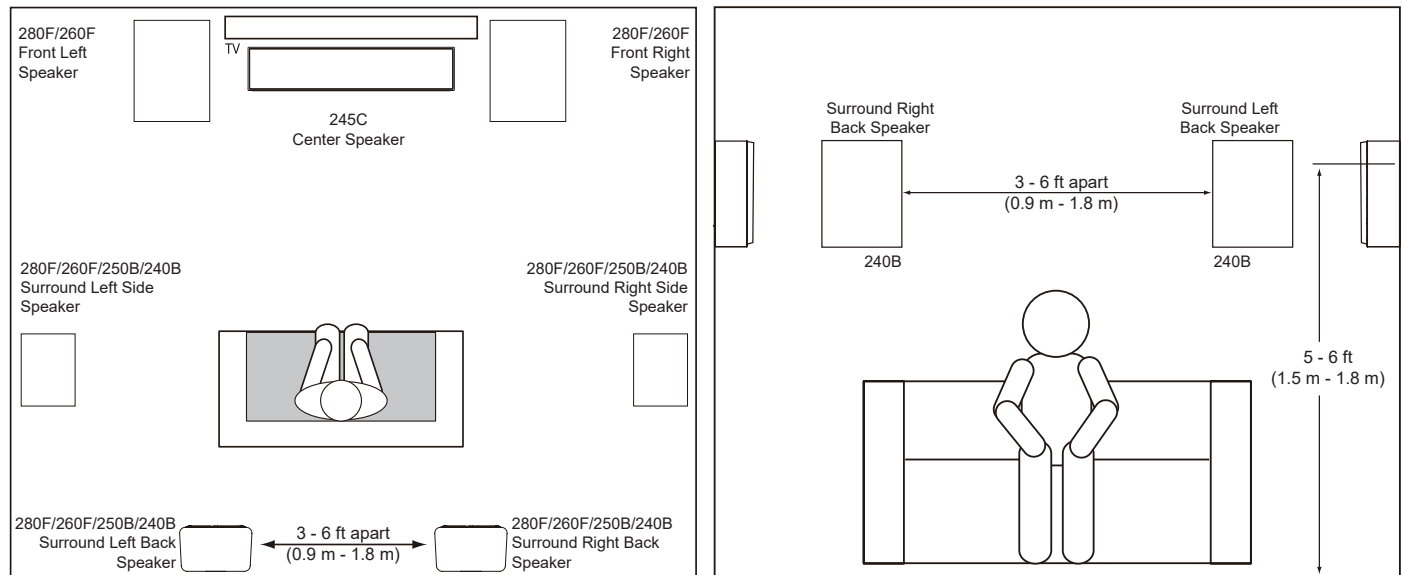
STAGE 240B-SURROUND CHANNELS (5.1-CHANNEL SYSTEM)

When you use these speakers as surround-channel speakers in a 5.1-channel system, place them slightly behind the listening position, facing each other. Ideally, they should be 5-6 feet (1.5m-1.8m) above the floor. An alternate location would be on a wall behind the listening position, facing forward. The surround speakers should not call attention to themselves while they're playing. Experiment with their placement until you hear a diffuse, ambient sound accompanying the sounds that you hear from the front left, front right and center speakers.



STAGE 240B-SURROUND CHANNELS (7.1-CHANNEL SYSTEM)

When you use these speakers as surround-channel speakers in a 7.1-channel system, place the surround side speakers directly to the sides of the listening position, at least 5-6 feet (1.5m -1.8m) above the floor.



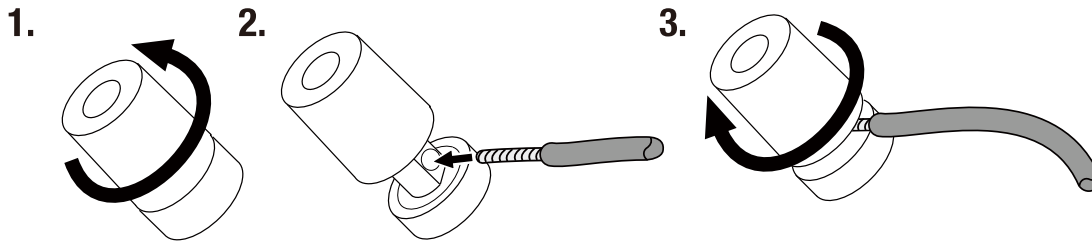
Connections

CAUTION: Make sure that all the system's electrical components are turned OFF (and preferably unplugged from their AC outlets) before making any connections.

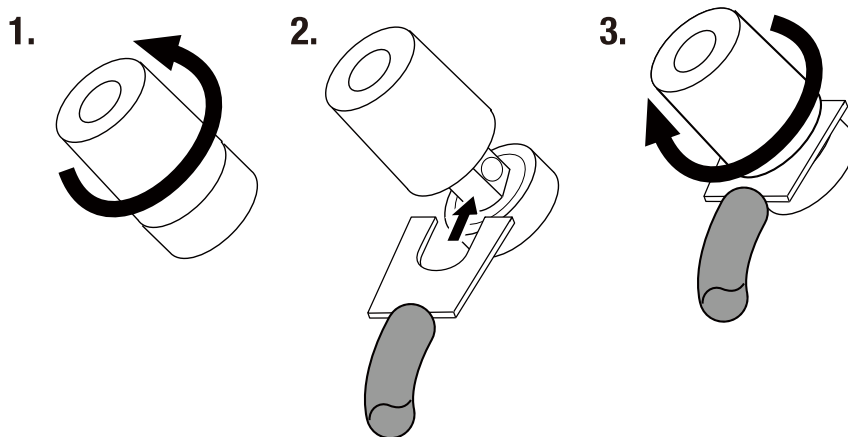
Speakers and amplifiers have corresponding positive and negative ("+" and "-") connection terminals. All Stage series speakers have connection terminals that are marked "+" and "-" on the terminal-cup assembly. Additionally, the "+" terminals have red markings, while the "-" terminals have black markings.

To ensure proper polarity, connect each "+" terminal on the back of the amplifier or receiver to the respective "+" (red) terminal on each speaker. Connect the "-" terminals in a similar way. Do not reverse polarities (i.e., "+" to "-" or "-" to "+") when making connections. Doing so will cause poor stereo imaging and diminished bass performance.

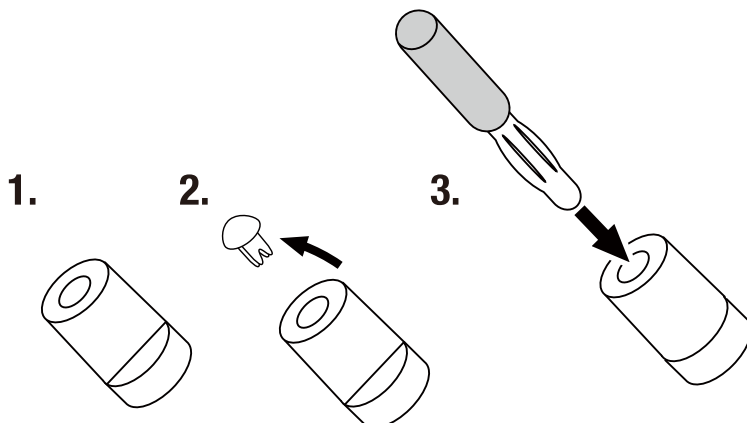
Connections, Bare Wire Connectors:



USING SPADE CONNECTORS:



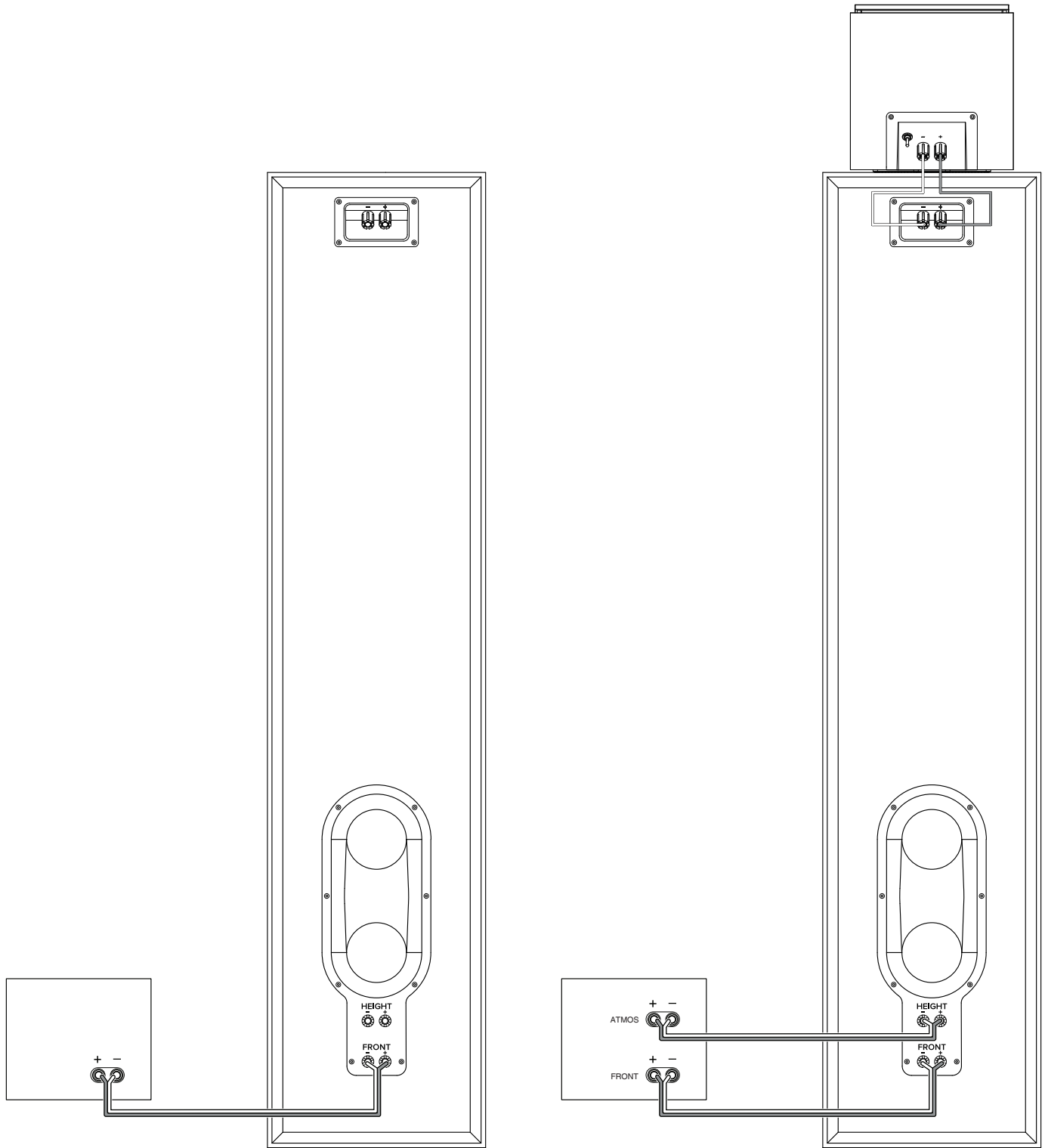
USING BANANA CONNECTORS:



Using The Pass Through ATMOS Connectors

Use the Pass Through ATMOS connectors on the bottom of the 280F and 260F and connect the 240H to the top terminals.

NOTE: If you are not using an ATMOS module these connectors will not be used.



Specifications

STAGE 280F

Type:	Floorstanding Loudspeaker System
Low Frequency Driver:	Dual 8-inch (200 mm) Polycellulose Ribbed Cone
High Frequency Driver:	1-inch (25 mm) Anodized Aluminum
Waveguide:	Next Generation HDI™
Recommended Amplifier Power:	20-225 W
RMS power:	125 W
Frequency Response -6 dB:	33 Hz-25 kHz
Frequency Response -3 dB:	39 Hz-25 kHz
Sensitivity @ 1 M, 2.83 V:	91 dB
Nominal Impedance:	6 Ohms
Crossover Frequencies:	1.1 kHz/2.2 kHz
Enclosure Tuning:	Bass Reflex via Dual Flared Racetrack Rear-Firing Tuned Ports
Finish:	Espresso or Latte
Dimensions (H x W x D):	43.8 in x 14.1 in x 16.5 in (1113 mm x 357 mm x 420 mm)
Dimensions (H x W x D) without Base:	43.8 in x 9.5 in x 16.1 in (1113 mm x 241 mm x 409 mm)
Product Weight:	55.2 lbs. (25.1 kg)
Shipping Weight:	67.5 lbs. (30.6 kg)
Shipping Units of Measure:	Each

STAGE 260F

Type:	Floorstanding Loudspeaker System
Low Frequency Driver:	Dual 6.5-inch (165 mm) Polycellulose Ribbed Cone
High Frequency Driver:	1-inch (25 mm) Anodized Aluminum
Waveguide:	Next Generation HDI™
Recommended Amplifier Power:	20-225 W
RMS power:	125 W
Frequency Response -6 dB:	40 Hz-25 kHz
Frequency Response -3 dB:	45 Hz-25 kHz
Sensitivity @ 1 M, 2.83 V:	90 dB
Nominal Impedance:	6 Ohms
Crossover Frequencies:	1.3 kHz/1.7 kHz
Enclosure Tuning:	Bass Reflex via Dual Flared Racetrack Rear-Firing Tuned Ports
Finish:	Espresso or Latte
Dimensions (H x W x D):	40.8 in x 12.2 in x 14.3 in (1036 mm x 310 mm x 362 mm)
Dimensions (H x W x D) without Base:	40.8 in x 7.9 in x 13.9 in (1036 mm x 200 mm x 354 mm)
Product Weight:	43.0 lbs. (19.5 kg)
Shipping Weight:	67.5 lbs. (30.6 kg)
Shipping Units of Measure:	Each

STAGE 250B

Type:	Bookshelf Loudspeaker System
Low Frequency Driver:	5.25-inch (130 mm) Polycellulose Ribbed Cone
High Frequency Driver:	1-inch (25 mm) Anodized Aluminum
Waveguide:	Next Generation HDI™
Recommended Amplifier Power:	20-150 W
RMS power:	75 W
Frequency Response -6 dB:	50 Hz-25 kHz
Frequency Response -3 dB:	55 Hz-25 kHz
Sensitivity @ 1 M, 2.83 V:	86 dB
Nominal Impedance:	6 Ohms
Crossover Frequencies:	1.7 kHz
Enclosure Tuning:	Bass Reflex via Dual Rear-Firing Tuned Ports
Finish:	Espresso or Latte
Dimensions (H x W x D):	12.6 in x 7.9 in x 9.5 in (321 mm x 200 mm x 241 mm)
Product Weight:	12.4 lbs.(5.6 kg)
Shipping Weight:	30 lbs. (13.6 kg)
Shipping Units of Measure:	Pair

STAGE 240B

Type:	Bookshelf Loudspeaker System
Low Frequency Driver:	4.5-inch (114 mm) Polycellulose Ribbed Cone
High Frequency Driver:	1-inch (25 mm) Anodized Aluminum
Waveguide:	Next Generation HDI™
Recommended Amplifier Power:	20-150 W
RMS power:	75 W
Frequency Response -6 dB:	53 Hz-25 kHz
Frequency Response -3 dB:	65 Hz-25 kHz
Sensitivity @ 1 M, 2.83 V:	85 dB
Nominal Impedance:	6 Ohms
Crossover Frequencies:	1.4 kHz
Enclosure Tuning:	Bass Reflex via Rear-Firing Tuned Port
Finish:	Espresso or Latte
Dimensions (H x W x D):	10.7 in x 6.9 in x 8.5 in (272 mm x 175 mm x 217 mm)
Product Weight:	10.1 lbs. (4.6 kg)
Shipping Weight:	22.9 lbs. (10.4kg)
Shipping Units of Measure:	Pair

STAGE 245C

Type:	Floorstanding Loudspeaker System
Low Frequency Driver:	Quad 4.5-inch (114 mm) Polycellulose Ribbed Cone
High Frequency Driver:	1-inch (25 mm) Anodized Aluminum
Waveguide:	Next Generation HDI™
Recommended Amplifier Power:	20-150 W
RMS power:	75 W
Frequency Response -6 dB:	55 Hz-25 kHz
Frequency Response -3 dB:	82 Hz-25 kHz
Sensitivity @ 1 M, 2.83 V:	91 dB
Nominal Impedance:	6 Ohms
Crossover Frequencies:	1.3 Khz/2.0 kHz
Enclosure Tuning:	Bass Reflex via Dual Rear-Firing Tuned Ports
Finish:	Espresso or Latte
Dimensions (H x W x D):	6.1 in x 29.1 in x 8.5 in (156 mm x 740 mm x 217 mm)
Product Weight:	26.4 lbs. (12.0 kg)
Shipping Weight:	32.2 lbs. (14.7 kg)
Shipping Units of Measure:	Each

STAGE 240H

Type:	Dolby Atmos® Surround Sound Loudspeaker System
Low Frequency Driver:	4.5-inch (114 mm) Polycellulose Ribbed Cone
High Frequency Driver:	1-inch (25 mm) Anodized Aluminum
Waveguide:	Next Generation HDI™
Recommended Amplifier Power:	20-150 W
RMS power:	75 W
Frequency Response -6 dB:	85 Hz-25 kHz
Frequency Response -3 dB:	100 Hz-25 kHz
Sensitivity @ 1 M, 2.83 V:	85 dB
Nominal Impedance:	6 Ohms
Crossover Frequencies:	1.6 kHz
Enclosure Tuning:	Sealed
Finish:	Espresso or Latte
Dimensions (H x W x D):	6.9 in x 7.1 in x 10.6 in (176 mm x 180 mm x 270 mm)
Product Weight:	7.6 lbs. (3.5 kg)
Shipping Weight:	18.8 lbs. (8.5 kg)
Shipping Units of Measure:	Pair

Dolby, Dolby Atmos, and the double-D symbol are registered trademarks of Dolby Laboratories Licensing Corporation. Manufactured under license from Dolby Laboratories. Confidential unpublished works. Copyright © 2012-2021 Dolby Laboratories. All rights reserved.

