

# IA Portable Vocal Booth

Imperative Audio

## IA Portable Vocal Booth Assembly

We believe that creating the right environment for you and your microphone is paramount for achieving a great performance. Space, comfort, versatility, ease and acoustics are key elements for any vocal or instrument booth. Now you have all of this and portability.

The patented Imperative Audio Portable Vocal Booth is designed to offer real booth performance for singers, voice over artists, podcasters and recording professionals. But unlike traditional booths, the "PVB" is collapsible and comes in at a fraction of the price of similar and lesser performing booths.

So, it's time to assemble your PVB and get to work!

**Note: For ease and safety, we recommend that your PVB is best unpacked and assembled by 2 people.**

### IN THE BOX

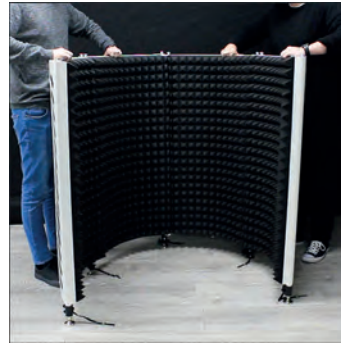
1 x PVB (Portable Vocal Booth)  
1 x Crossbar  
1 x Accessory Bar  
1 x Music/Book Stand  
1 x PVB Bag

### Optional

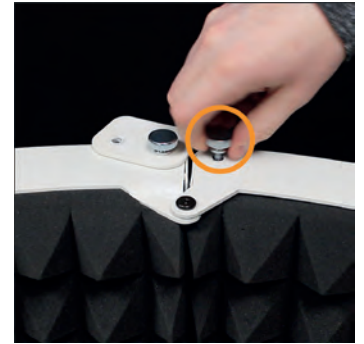
1 x Treated Channelled Roof  
1 x Bookstand Clip LED Light



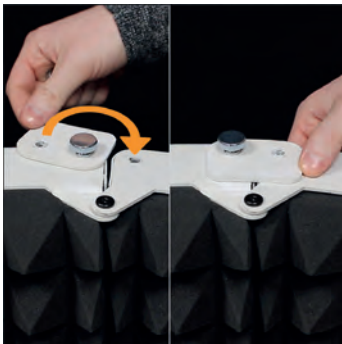
1. Remove the PVB from the bag and carefully remove all internal packaging.



2. Carefully open the PVB until the rear shells meet.



3. Remove the thumb screw on the open side of the rear centre bracket.



4. Slide bracket around and align screw holes. This may require you to move the shell to help the alignment.



5. Replace the thumb screw in the aligned holes. Do not over tighten.



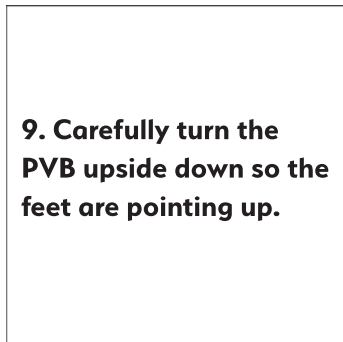
6. Select curved brace.



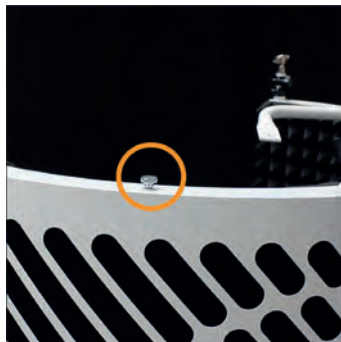
7. Align the brace screw hole to the corresponding screw hole on the top of the open side of the PVB.



8. Tighten thumb screws at both ends of the curved brace.



9. Carefully turn the PVB upside down so the feet are pointing up.



10. Unscrew thumb screw and align Accessory Bar over holes. Replace thumbscrew securely.



11. Unscrew and replace thumb-screw securely to the other end of the Accessory Bar.



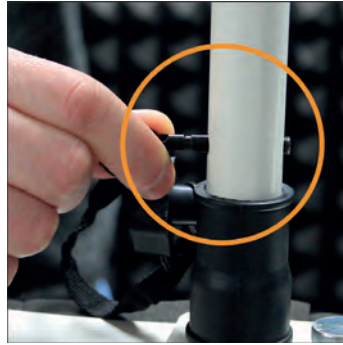
# IA Portable Vocal Booth

Imperative Audio

## IA Portable Vocal Booth Assembly



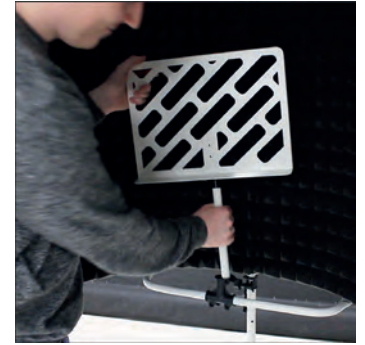
12. Untighten leg brace and pull up to desired height close to a leg pin hole..



13. **IMPORTANT** - Insert leg pin through the leg pin hole and slide the leg back until the pin meets the leg brace bracket.



14. Once ALL 5 legs have been safely pinned and locked, turn the PVB back to the upright position.



15. Insert and lock included bookstand and adjust to your required angle.



16. Clip optional light to bookstand and adjust to required angle.



17. Unpack optional Treated Channelled Roof.



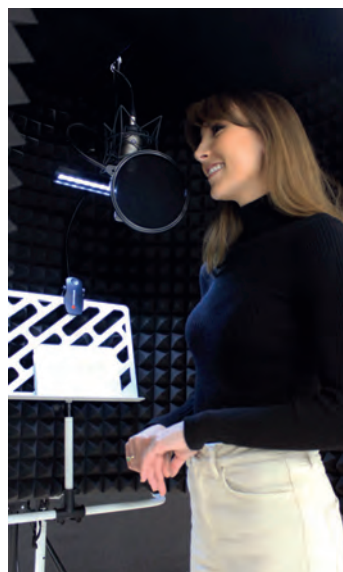
18. Simply align roof holes over the thumbscrews on the top of the PVB.



19. If using an overhead mic stand, insert vertical part of stand through the PVB roof channel.



Fully Assembled



Vocals & Voice Overs



In The Studio



Broadcast & Podcasts

