

Introduction:

Thank you for choosing a Shadow pickup. In order to get the most out of your new pickup system, we recommend you to read the installation instruction.

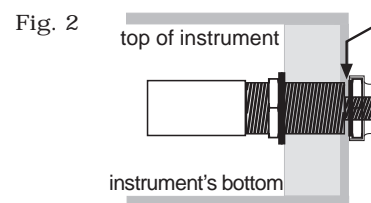
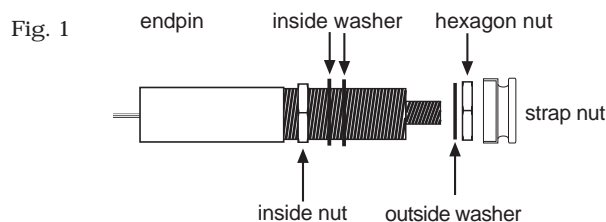
Contents:

- NanoMAG pickup (magnetic fingerboard pickup)
- endpin preamp for acoustic guitar
- battery pouch for a 9V battery
- cable clips

Installation:

1. Endpin Installation:

Take off the strings, remove original strap nut and increase hole up to 12,5mm diameter. Remove endpin strap nut, hexagon nut and washer from the endpin (Fig. 1). Mount the endpin as shown on Fig. 2. Adjust the inside nut so that the larger threads end just below the surface of the instrument (Fig. 2, arrow). Put the washer from the outside on the endpin jack, tighten the hexagon nut with 12mm wrench and screw endpin strap nut on.



2. NanoMAG Installation:

Remove the protective foil and press NanoMAG pickup to the end of your fingerboard. Make sure the pickup sits parallel to your frets and touches the guitar's top.

3. Connections:

Plug the pickup cable into the endpin preamp and secure cable with supplied cable clips. Connect the endpin to an appropriate amplifier. The battery turns automatically on, as soon as you plug the instrument cable into the endpin. To spare battery life, take the cable out when you are finished.

NANO MAG

NanoMAG is the only pickup of its kind on the market which provides an acoustic sound, but also can produce the sweet blues or jazz sound. The pickup is protected by an epoxy layer and the silver-platinum shielding will provide together with active electronics a low impedance hum-free output signal. It is very resistant to feedback and has an incredible dynamic in all positions.

