

Portable Speakers

MADRID TMS152

2 Way 15" Full Range Loudspeaker for
Portable PA and Installation Applications

- 2 way full range loudspeaker for portable PA and installation applications
- 800 Watts continuous, 3,200 Watts peak power
- Ideal for FOH, side and drum fill applications
- Carbon fibre loaded 15" low frequency driver with inside/outside wound coil
- Titanium dome 1.4" neodymium motor compression driver
- Switchable passive/bi-amp operation for flexibility of use
- Low distortion waveguide provides 75° H x 50° V dispersion
- 15 mm (5/8") birch plywood enclosure with hard wearing semi matt black paint finish
- Rugged powder coated perforated steel mesh grille
- Dual angle pole mount for accurate audience coverage
- Durable handles for easy lifting and carrying
- Multiple internal rigging points for installation applications
- Neutrik speakON* NL4 connectors for reliable long life operation
- 3-Year Warranty Program**
- Designed and engineered in England



The 2 way full range TMS152 is a switchable passive/bi-amp 15" 3,200 Watt loudspeaker system designed for a wide range of portable speech and music sound reinforcement applications. The TMS152 is designed to work in conjunction with TURBOSOUND loudspeaker management systems, providing optimal performance for FOH, side and drum fill applications, as well as offering considerable flexibility to readily adapt to varying venue requirements.



The TMS152 loudspeaker features a carbon fibre loaded 15" low frequency driver with an inside/outside wound low mass voice coil for improved transient response, and a titanium dome 1.4" neodymium motor compression driver mounted on a 75° horizontal by 50° vertical low distortion waveguide. All drivers are matched with an internal passive crossover network in a reflex-loaded enclosure, and bi-amp mode can be enabled by means of a rear panel switch.

Finished in a highly durable semi matt black paint, the cabinet is constructed from 15 mm (5/8") birch plywood, and includes a rugged powder coated perforated steel mesh grille backed with reticulated foam. The TMS152 includes internal M10 threaded rigging points for permanent installation, a dual-angle pole mount socket for high or low height use with 35 mm poles/speaker stands to optimise audience coverage, and durable handles for easy transport. A rear panel connector plate carries two Neutrik speakON* NL4 connectors for input and link connections to additional enclosures.

*All third-party trademarks are the property of their respective owners. Their use neither constitutes a claim of the trademark nor affiliation of the trademark owners with MUSIC Group. Product names are mentioned solely as a reference for compatibility, effects and/or components.

**Warranty details can be found at music-group.com.

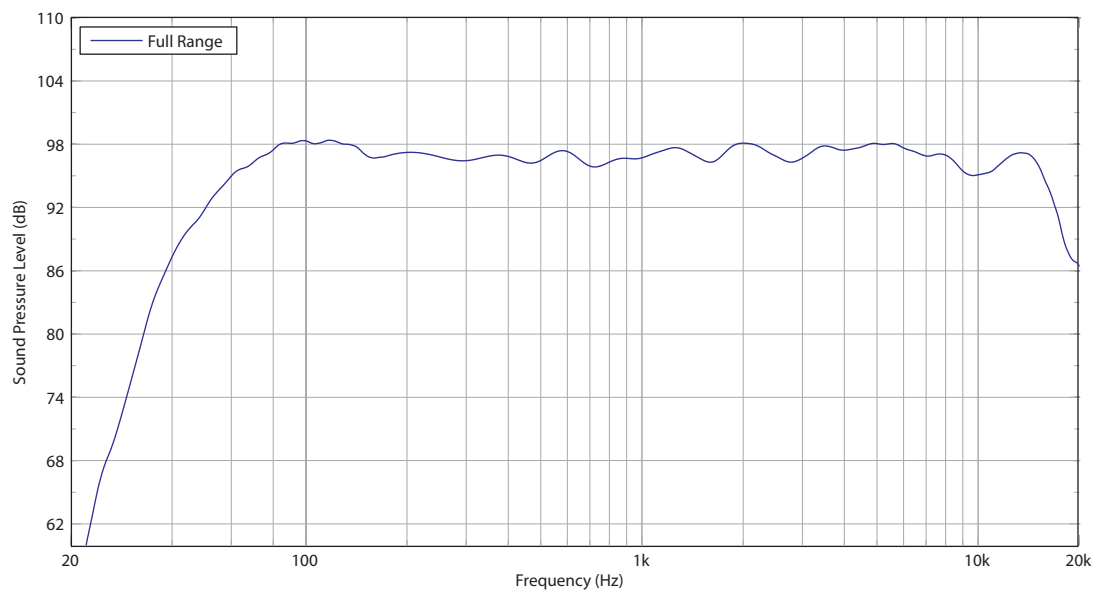
Portable Speakers

MADRID

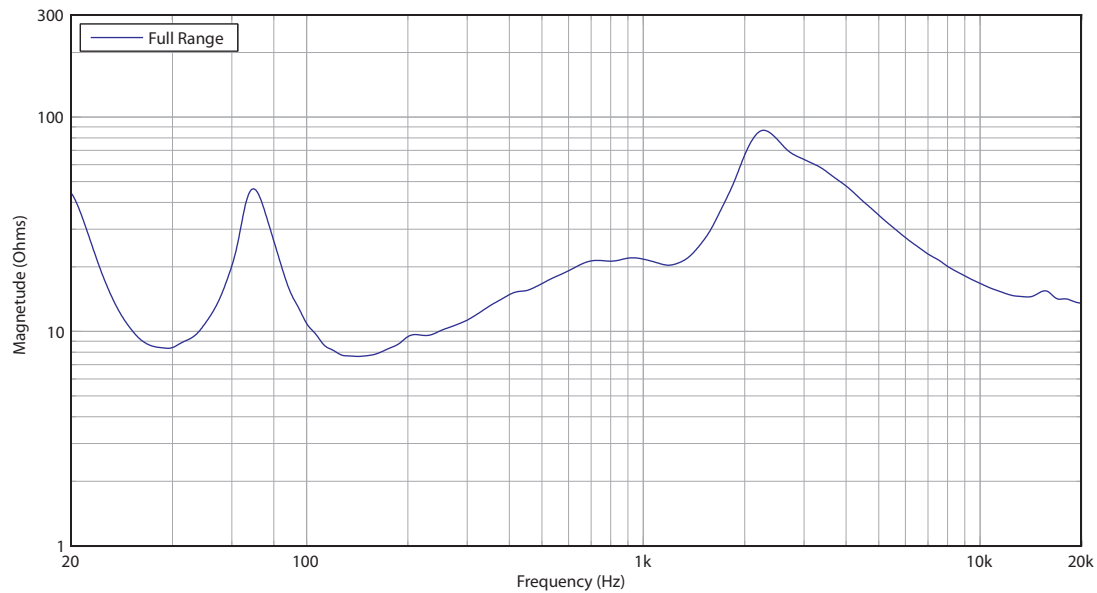
TMS152

2 Way 15" Full Range Loudspeaker for
Portable PA and Installation Applications

Frequency Response Sensitivity 1 W / 1 m



Impedance



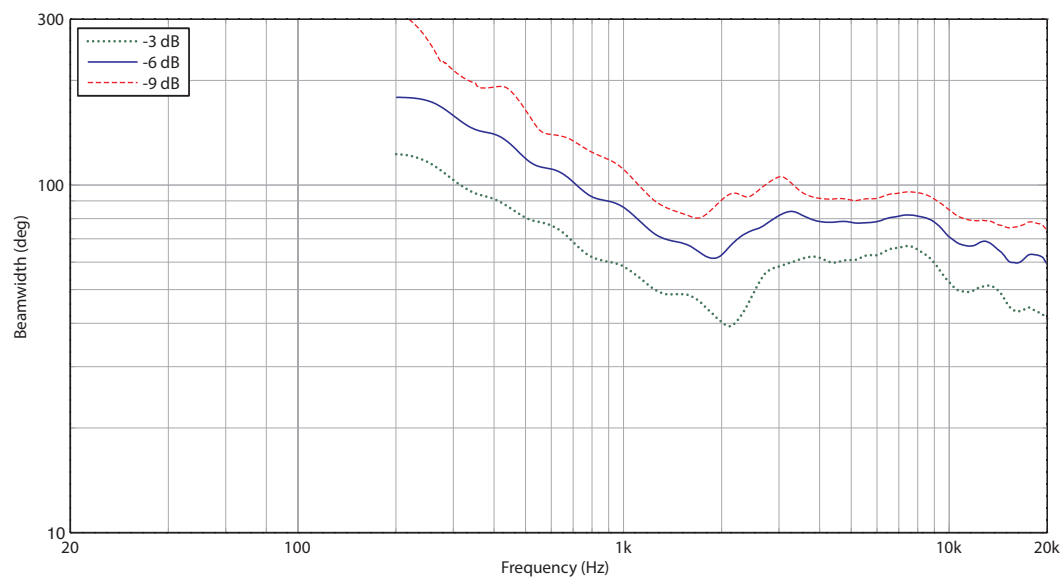
Portable Speakers

MADRID

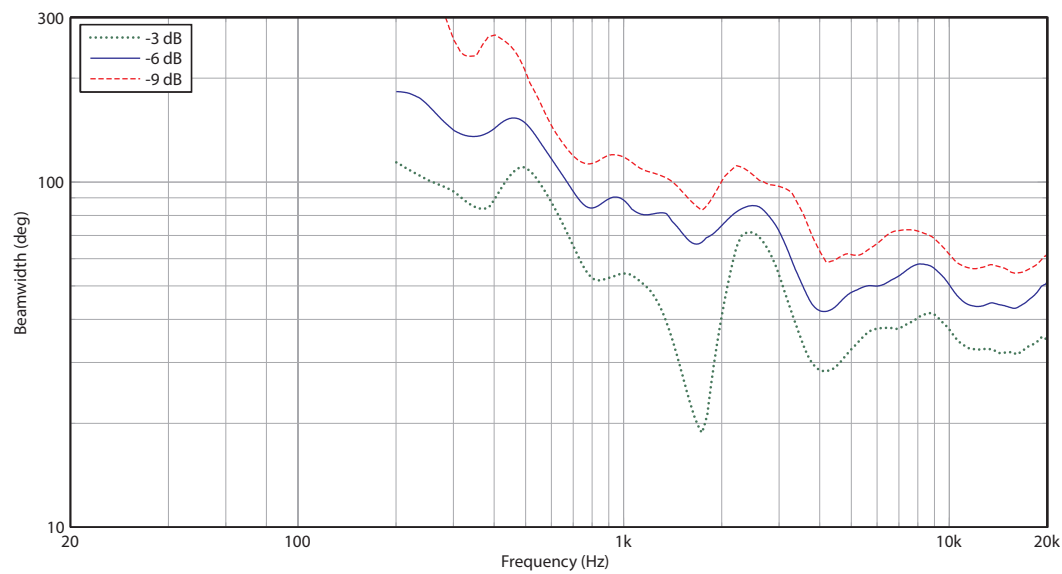
TMS152

2 Way 15" Full Range Loudspeaker for
Portable PA and Installation Applications

Horizontal Beamwidth



Vertical Beamwidth

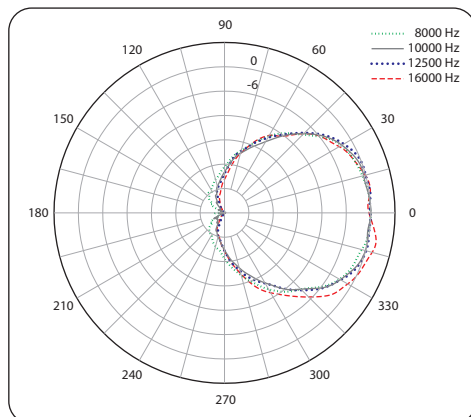
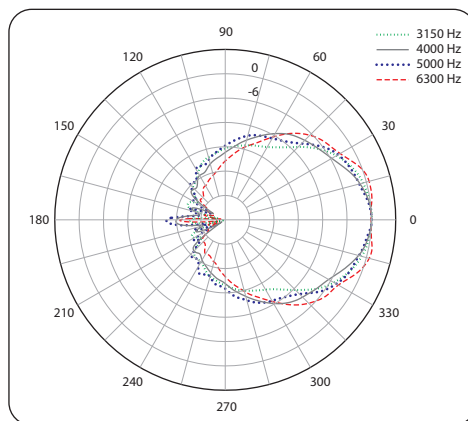
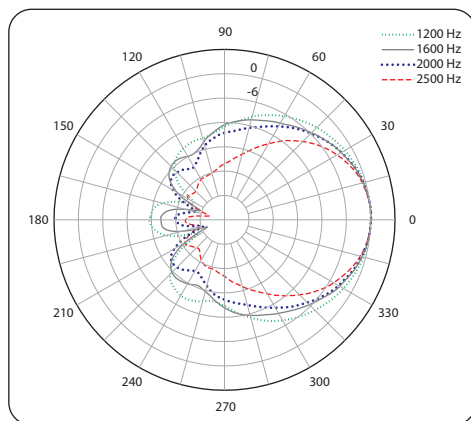
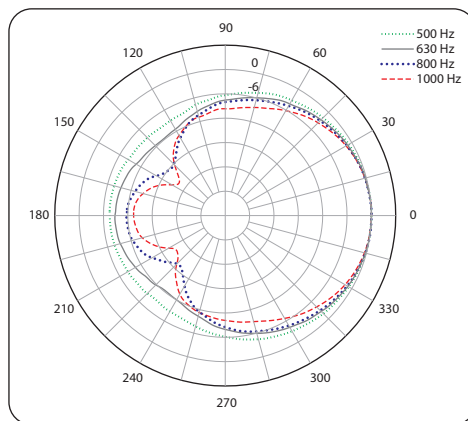
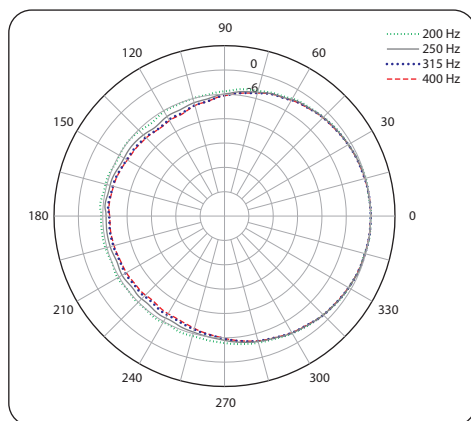


MADRID

TMS152

2 Way 15" Full Range Loudspeaker for
Portable PA and Installation Applications

Horizontal Polar Plots

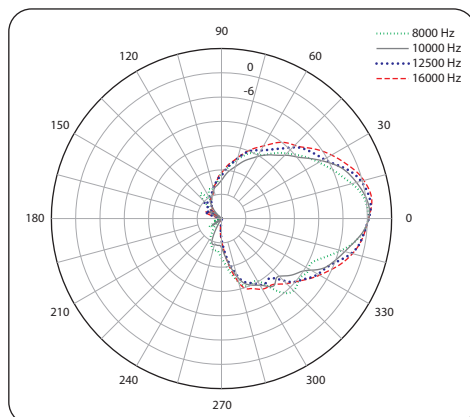
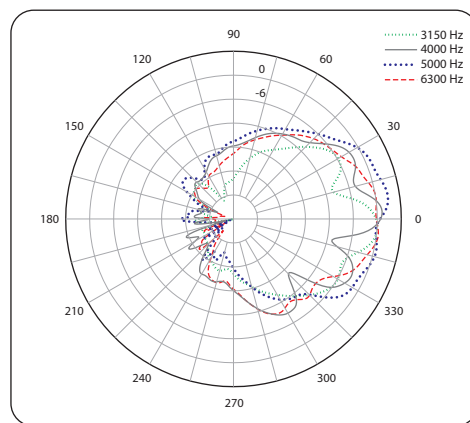
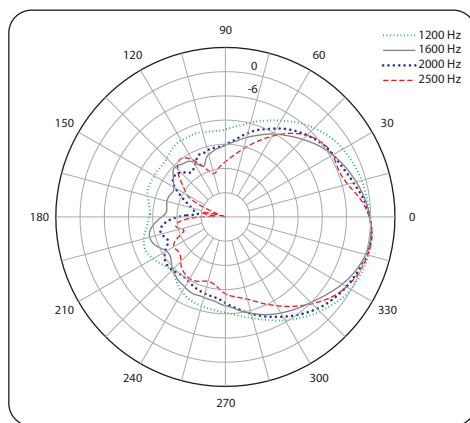
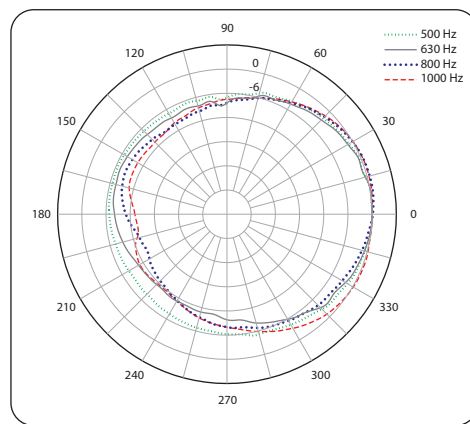
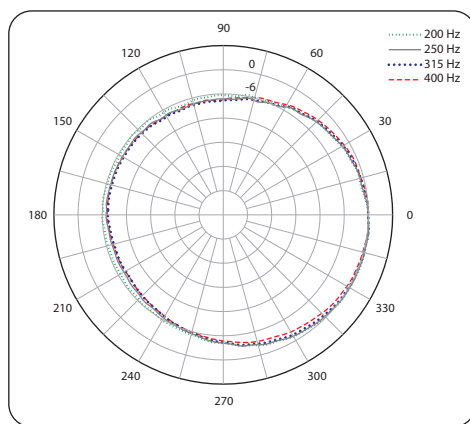


Portable Speakers

MADRID TMS152

2 Way 15" Full Range Loudspeaker for
Portable PA and Installation Applications

Vertical Polar Plots



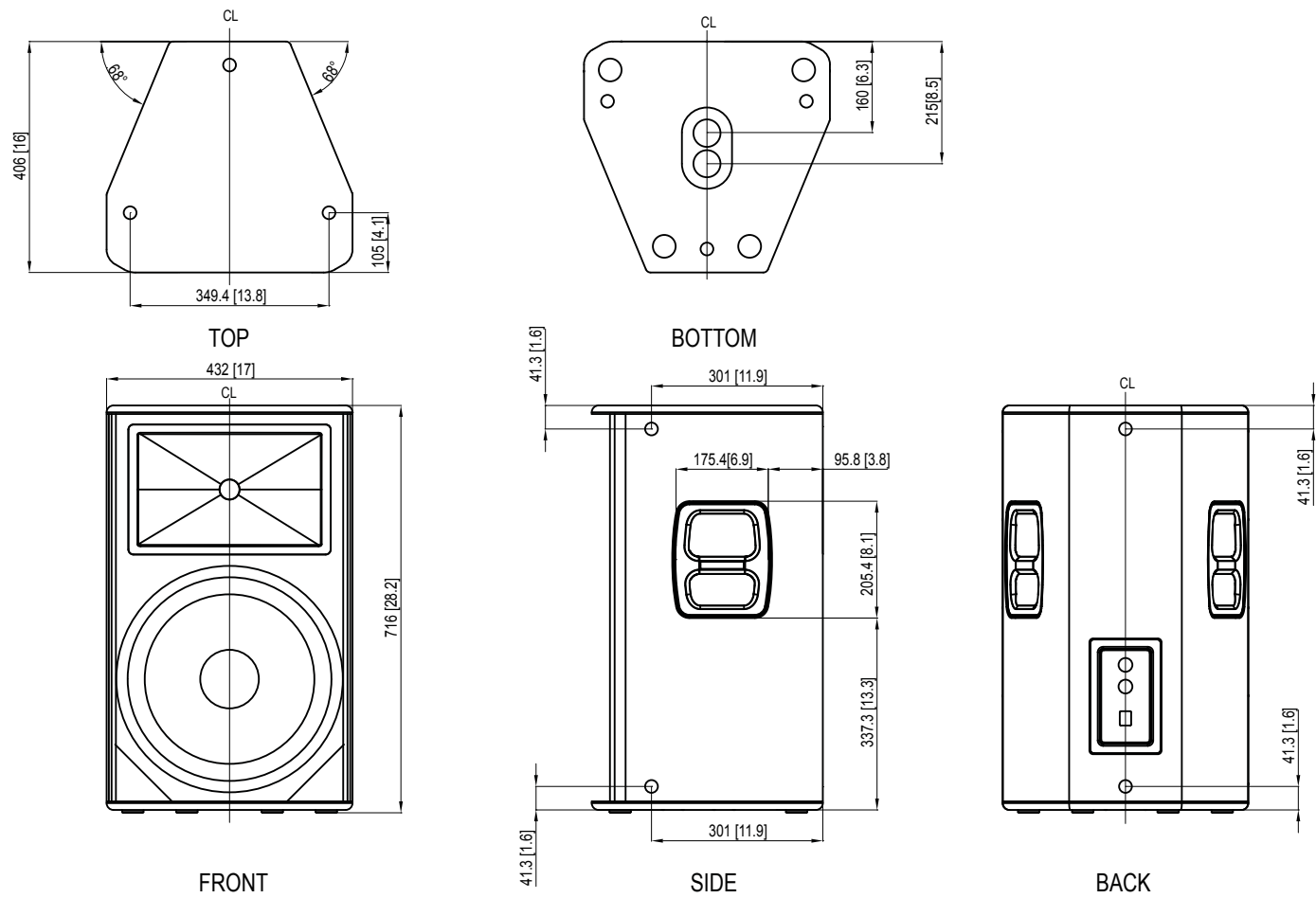
Portable Speakers

MADRID

TMS152

2 Way 15" Full Range Loudspeaker for
Portable PA and Installation Applications

Dimensions



Portable Speakers

MADRID

TMS152

2 Way 15" Full Range Loudspeaker for
Portable PA and Installation Applications

Technical Specifications

System

Frequency Response	55 Hz – 20 kHz ± 3 dB 45 Hz – 20 kHz -10 dB
Nominal Dispersion	75° H X 50° V @ -6 dB Points
Directivity Factor (Q)	12.8
Directivity Index (DI)	11.1
Power Handling (IEC)	
Passive	800 W continuous, 3,200 W peak
Bi-amp	LF: 800 W continuous, 3,200 W peak HF: 75 W continuous, 300 W peak
Sensitivity	97 dB (1 W @ 1 m)
Maximum SPL	
Passive	126 dB continuous, 132 dB peak
Bi-Amp	LF: 126 dB continuous, 132 dB peak HF: 128 dB continuous, 134 dB peak
Impedance	
Passive	8 Ω
Bi-Amp	LF: 8 Ω HF: 6 Ω
Crossover Type	Passive / bi-amp, switchable
Components	1 x 15" (394 mm) LF driver 1 x 1.4" (36 mm) HF compression driver

Enclosure

Connectors	2 x Neutrik speakON* NL4
Wiring	
Passive	Pins 1+ / 1- input, pins 2+ / 2- link
Bi-Amp	Pins 1+ / 1- LF, pins 2+ / 2- HF
Dimensions HWD	716 x 432 x 406 mm (28.2 x 17.0 x 16.0")
Net Weight	27.7 kg (61.0 lbs)
Construction	15 mm (5/8") birch plywood
Finish	Semi matt black paint
Grille	Powder-coated perforated steel
Flying Hardware	M12 x 12 points

Portable Speakers

MADRID TMS152

2 Way 15" Full Range Loudspeaker for
Portable PA and Installation Applications



Portable Speakers

MADRID TMS152

2 Way 15" Full Range Loudspeaker for
Portable PA and Installation Applications



Portable Speakers

MADRID TMS152

2 Way 15" Full Range Loudspeaker for
Portable PA and Installation Applications



For service, support or more information contact the TURBOSOUND location nearest you:

Europe
MUSIC Group Services UK
Tel: +44 156 273 2290
Email: CARE@music-group.com

USA/Canada
MUSIC Group Services NV Inc.
Tel: +1 702 800 8290
Email: CARE@music-group.com

Japan
MUSIC Group Services JP K.K.
Tel: +81 3 6231 0454
Email: CARE@music-group.com

MUSIC Group accepts no liability for any loss which may be suffered by any person who relies either wholly or in part upon any description, photograph, or statement contained herein. Technical specifications, appearances and other information are subject to change without notice. All trademarks are the property of their respective owners. MIDAS, KLARK TEKNIK, TURBOSOUND, BEHRINGER, BUGERA and DDA are trademarks or registered trademarks of MUSIC Group IP Ltd. © MUSIC Group IP Ltd. 2014 All rights reserved.

