

Owner's Manual

DRIVE CORE DELUXE

NUX

www.nuxefx.com

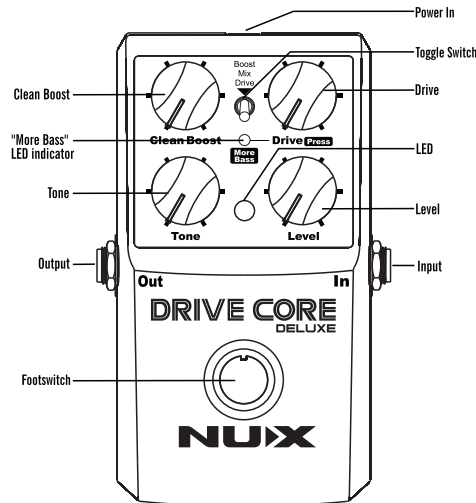
Thank you for selecting the NUX products! With years of research, we are proud to give you the new generation of the NUX pedals - The Core Deluxe Series! Based on the popular NUX Core pedals, the Deluxe series pedals have upgraded hardware circuits and more sophisticated features for superb tone and performance!

DRIVE CORE DELUXE is an analog overdrive pedal that gives you the famous Texas blues tone. It has a bass boost switch, and a clean boost circuit that can be mixed with overdrive.

Features

- Analog Circuit
- Clean Boost that can be mixed with Overdrive
- Bass Boost
- True Bypass
- Powered by 9V Battery or Optional 9V Adaptor with Negative Tip

Product Description



Clean Boost Knob

Set the level of the Clean Boost section. It offers 10dB signal boost.

Drive (More Bass) Knob

Set the overdrive amount. This is also the Bass Boost Switch. Press it down to have more bass, and the little LED of "More Bass" lights up.

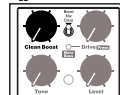
Tone Knob

Turn it clockwise to have more treble.

Level Knob

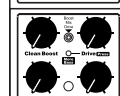
Set the Level of the Overdrive section.

Toggle Switch



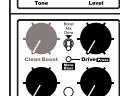
Boost Position

Only Clean Boost knob functions. The Clean Boost section provides up to 10dB boost, with slight emphasis on high end to brighten your tone.



Mix Position

All knobs function. Clean Boost circuit is in parallel with the Drive circuit. It helps to blend a clear attack of the Clean tone to the overdrive tone. More Bass function can be activated by pressing the Drive knob.



Drive Position

Only Overdrive section works. More Bass function can be activated by pressing the Drive knob.

Footswitch

Press the footswitch to engage or bypass the effect.

Connection

Power In

Connect a 9V (Negative Tip) Adaptor. Optional NUX ACD-008A is recommended.

NOTE: Using other adaptor may cause damage or noise.

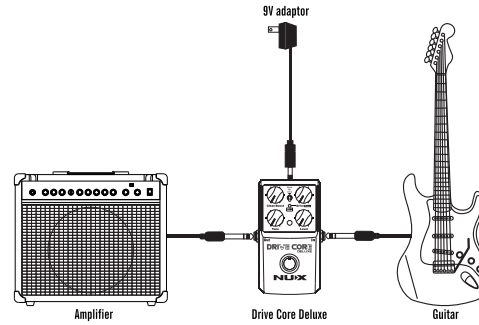
Input

This is the input jack for plugging the guitar or the output of another pedal.

NOTE: In jack is also the power trigger, so make sure the In jack is always connected to keep the power on.

Output

This outputs the effect to a guitar amplifier or the input of another pedal.

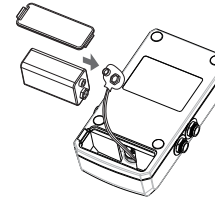


Using Effects

- To use only the Overdrive section, set the toggle switch to Drive position. Start by setting the Drive, Tone knobs to the middle position, and increase the Level gradually from zero until you get proper volume.
- To use only the Clean Boost section, set the toggle switch to Clean Boost position. Start by turning the Clean Boost knob gradually from zero until you get proper volume boost. Try to bypass it and compare the volume with the bypassed signal. The Clean Boost section provides up to 10dB boost, with slight emphasis on high end to brighten your tone.
- You can mix the Clean Boost and the Overdrive in parallel by setting the toggle switch to Mix position. This helps to get back the clear attack of clean tone to your overdrive tone.
- If you want "More Bass", press the Drive knob to boost the bass frequency. "More Bass" feature only works for the Overdrive section.

About Battery

A 9V battery is included in the package in purpose of testing. If it is powered by battery, change a new battery when the LED goes dim and the sound gets wrong. To save battery life, unplug the cable from the In jack when it is not in use. A high quality pedal power adaptor (optional NUX ACD-008A) is strongly recommended.



Troubleshooting

Power Does Not Turn On

- Check if the adaptor is connected correctly and securely.
- If it is powered by battery, try a fresh battery.
- Check if the In jack is plugged in.

No Sound

- Try to plug the instrument directly into this pedal and output this pedal directly to the amp, and make sure the volume of the instrument and the amplifier is turned on.
- Check if all the cable connections are good and secure.

Noise Problem

- Make sure the power adaptor is with correct specifications (DC 9V, ⓈⓈⓈ). We strongly recommend the NUX ACD-008A adaptor. Using other adaptor may cause noise or malfunction.
- Setting the Drive too high will generate more noise. Try to lower down the Drive. Using guitar with single coil pickups may have more noise.

Poor Sound Quality

- Make sure all the cables are securely plugged into the pedal, guitar and the playback device, i.e. amplifiers.
- Make sure the power adaptor is with the correct specifications (DC 9V, ⓈⓈⓈ).
- If it is powered by battery, try a new battery. For longest battery life, we suggest new, high quality ALKALINE battery.

Specifications

- Input Impedance: 1MΩ
- Output Impedance: 10KΩ
- Power Supply: 9V Battery, or AC adaptor to the DC 9V ⓈⓈⓈ, (optional NUX ACD-008A)
- Dimensions: 122mm (L) x 72mm (W) x 47mm (H)
- Weight: 270g

*Specification may change without notice.

Precautions

- Environment:
 1. Do NOT use the DRIVE CORE DELUXE in high temperature, or high humidity, or subzero environments.
 2. Do NOT use the DRIVE CORE DELUXE in the direct sunlight.
- Please do NOT disassemble the DRIVE CORE DELUXE by yourself.
- Please keep this manual for future reference.

Accessories

- One 9V battery (only for testing purpose)
- Owner's manual

THE FCC REGULATION WARNING (for U.S.A.)

This equipment has been tested and found to comply with the limits for a Class B digital device, pursuant to Part 15 of the FCC Rules. These limits are designed to provide reasonable protection against harmful interference in a residential installation. This equipment generates, uses, and can radiate radio frequency energy and, if not installed and used in accordance with the instructions, may cause harmful interference to radio or television reception. However, there is no guarantee that interference will not occur in a particular installation. If this equipment does cause harmful interference to radio or television reception, which can be determined by turning the equipment off and on, the user is encouraged to try to correct the interference by one or more of the following measures:

- Reorient or relocate the receiving antenna.
- Increase the separation between the equipment and receiver.
- Connect the equipment into an outlet on a circuit different from that to which the receiver is connected.
- Consult the dealer or an experienced radio/TV technician for help.

CE mark for European Harmonized Standards

CE Mark which is attached to our company's products of Battery mains the product is in fully conformity with the harmonized standard(s) EN 61000-6-3:2007+A1:2011 & EN 61000-6-1:2007 Under the Council Directive 2004/108/EC on Electromagnetic Compatibility.

Copyright
Copyright 2015 Cherub Technology Co. All rights reserved. NUX and DRIVE CORE DELUXE are trademarks of Cherub Technology Co. Other product names modeled in this product are trademarks of their respective companies that do not endorse and are not associated or affiliated with Cherub Technology Co.

Accuracy
Whilst every effort has been made to ensure the accuracy and content of this manual, Cherub Technology Co. makes no representations or warranties regarding the contents.

WARNING!-IMPORTANT SAFETY INSTRUCTIONS BEFORE CONNECTING, READ INSTRUCTIONS

WARNING: To reduce the risk of fire or electric shock, do not expose this appliance to rain or moisture.

CAUTION: To reduce the risk of fire or electric shock, do not remove screws. No user-serviceable parts inside. Refer servicing to qualified service personnel.

CAUTION: This equipment has been tested and found to comply with the limits for a Class B digital device pursuant to Part 15 of FCC Rules. Operation is subject to the following two conditions: (1) This device may not cause harmful interference, and (2) this device must accept any interference received, including interference that may cause undesired operation.

The lightning symbol within a triangle means "electrical caution!" It indicates the presence of information about operating voltage and potential risks of electrical shock.

The exclamation point within a triangle means "caution!" Please read the information next to all caution signs.

1. Use only the supplied power supply or power cord. If you are not sure of the type of power available, consult your dealer or local power company.
2. Do not place near heat sources, such as radiators, heat registers, or appliances which produce heat.
3. Guard against objects or liquids entering the enclosure.
4. Do not attempt to service this product yourself, as opening or removing covers may expose you to dangerous voltage points or other risks. Refer all servicing to qualified service personnel.
5. Refer all servicing to qualified service personnel. Servicing is required when the apparatus has been damaged in any way, such as when the power supply cord or plug is damaged, liquid has been spilled or objects have fallen into the apparatus, the apparatus has been exposed to rain or moisture, does not operate normally or has been dropped.
6. The power supply cord should be unplugged when the unit is to be unused for long periods of time.
7. Protect the power cord from being walked on or pinched particularly at plugs, convenience receptacles and at the point where they exit from the apparatus.
8. Prolonged listening at high volume levels may cause irreparable hearing loss and/or damage. Always be sure to practice "safe listening".

Follow all instructions and heed all warnings
KEEP THESE INSTRUCTIONS!

©2015 Cherub Technology-All rights reserved. No part of this publication may be reproduced in any form without prior written permission of Cherub Technology.



www.nuxefx.com

Made in China

DRIVE CORE DELUXE 模拟过载效果器 使用说明书

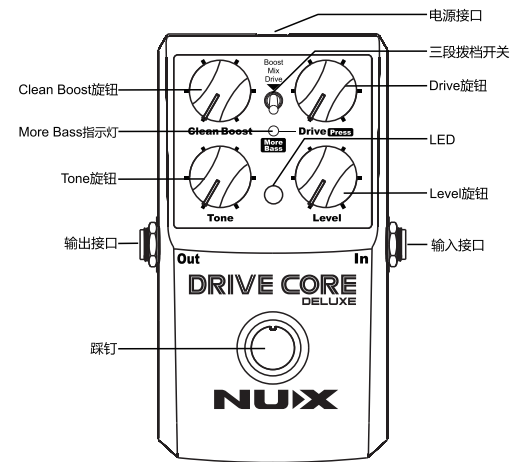
感谢您选择NUX的产品！经过数年的研究，我们很自豪的推出新一代NUX单块效果器—CORE DELUXE系列！以畅销经典款NUX CORE系列单块为基础，全新的DELUXE系列升级了硬件电路，增加了更多精细的功能，保证让您拥有完美的音色和演出！

DRIVE CORE DELUXE是一种模拟过载单块效果器，它可以带给您著名的德克萨斯蓝调音色。它有一个低音激励开关和一个可以单独或者和过载效果混合在一起使用的清音激励电路。

产品特点

- 纯模拟电路
- 清音激励可单独使用或与过载效果混合
- 低音激励
- 硬件直通设计
- 可用9V电池或9V（外正内负）电源适配器供电

产品界面



Clean Boost旋钮

设置清音激励的水平，提供10dB的信号放大。

Drive(More Bass)旋钮

设置过载的失真度，也可作为低音激励开关（按下后）。将旋钮关小而获得更多低音，同时表示“More Bass”的LED灯会亮起。

Tone旋钮

顺时针旋转可获得更多高音。

Level旋钮

设置过载效果的输出音量。

三段拨档开关

	Boost档 仅Clean Boost旋钮起作用。清音激励选项提供10dB的信号提升，并轻微强调高频，可以让音色更明亮。
	Mix档 所有旋钮都起作用。清音线路与过载线路并联。将帮助您在过载音色中得到清晰的清音音色的音头。按下Drive旋钮还可以打开低音提升功能。
	Drive档 仅过载区块起作用（Clean Boost旋钮不起作用）。按下Drive旋钮还可打开低音提升功能。

踩钉

按下踩钉可以激发效果或者旁路掉效果器。

设备连接

电源接口

连接9V（外正内负）电源适配器。

推荐选配NUX ACD-008A电源适配器。

注意：选用其它适配器可能造成机器损坏或噪音。

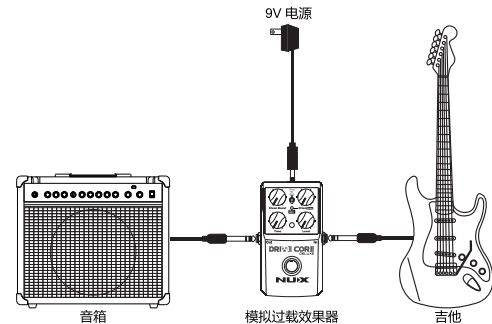
输入接口

连接吉他或者其它效果器的输出到此接口。

注意：In接口也是电源触发器，因此In接口需一直保持连接，以保证机器处于开机状态。

输出接口

此接口将信号输出至吉他音箱或另一个效果器的输入。

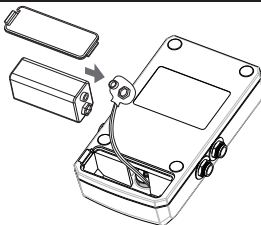


使用指南

- 当只使用过载效果时，将三段拨档开关切换到Drive位置，把Drive和Tone旋钮转到中间位置，然后将Level旋钮从0的位置开始旋转直至得到合适的音量。
- 当只使用清音激励时，将三段拨档开关切换到Boost位置，把Clean Boost旋钮从0的位置开始旋转直至得到合适的音量激励。尝试旁路掉Drive Core，比较被旁路的信号音量与获得激励的信号音量。清音激励可提供10dB的音量放大，并轻微强调高频，可以让音色更明亮。
- 将三段拨档开关打到Mix位置，可以将清音激励和过载信号并联混合。这将帮助您在过载音色中得到清晰的清音音色的音头。
- 如果您想得到更多低音，按下Drive按钮可提升低频。“More Bass”功能仅在过载模式下起作用。

关于电池

本机随包装赠送一颗9V电池，用于测试用途。当效果器电源指示灯变暗，甚至声音不正常时，请更换新的电池。为了避免不必要的电池消耗，在不使用效果器时，请把音频线从In输入口中拔出。强烈推荐使用选配NUX ACD-008A电源适配器或者高质量效果器专用电源供电。



故障排除

无法开机

- 检查电源适配器是否正确牢固。
- 如果使用电池供电，请尝试更换新电池。
- 检查In接口是否连接。

没有声音

- 尝试将乐器直接连接到效果器，并将效果器输出直接连接至音箱，保证乐器和音箱的音量都已打开。
- 检查所有连接线是否连接正确牢固。

噪音问题

- 确保使用正确的电源适配器（9V，）。我们强烈建议您选用NUX ACD-008A电源适配器。使用其它适配器可能会造成噪音或故障。
- 设置过载过大会产生更多噪音，尝试降低过载量。使用单线圈拾音器可能会产生更多噪音。

声音质量差

- 确保所有连接线有效果器、吉他和播放装置（例如音箱）连接牢固。
- 确保使用正确的电源适配器（9V，）。我们强烈建议您选用NUX ACD-008A电源适配器。使用其它适配器可能会造成噪音或故障。
- 如果使用电池供电，请尝试更换电池。为获得最长的电池使用寿命，我们建议您使用新的高质量碱性电池。

技术规格

- 输入阻抗: 1MΩ
- 输出阻抗: 10kΩ
- 电源供应: 9V电池或者9V适配器（可选配NUX ACD-008A 9V电源适配器 ）
- 尺寸: 122mm(L) x 72mm(W) x 47mm(H)
- 重量: 270克

*技术规格如有变更，恕不另行通知。

注意事项

- 使用环境：
 - 1.避免在高温、潮湿、零下等恶劣的环境中使用。
 - 2.避免在阳光直射下使用。
- 请勿自行拆卸本机。
- 请保存好本手册以便以后查阅。

随机附件

- 一个9V电池(仅作测试用途)
- 说明书

质量承诺

亲爱的小天使用户：

在您使用小天使产品时，请仔细参阅产品说明书，当您有疑问和困难时，请拨打售后服务热线：**400-990-9866**

- 一周内出现质量问题可退货退款
 - 一年内出现质量问题可免费维修
 - 一月内出现质量问题可调换
 - 终身享有咨询和维修服务
- [请向销售商索取有效购买凭证并予以保存]

换修政策

一、包换政策：

- 1.消费者自购机之日起1个月之内，在正常使用情况下，出现非人为的产品性能故障，且产品外观及包装保持完好的可向所购机的经销商换机。
- 2.消费者在换机时应出示由经销商开出的购机收据及保修卡，否则经销商可以不予更换。

二、保修政策：

产品在购买之日起1年内，可免费享有维修服务；对于超过1年的产品及人为或不可抗力因素造成损坏的产品，我司可提供有偿维修服务。

广东省珠海市金鼎镇科技九路10号
珠海市蔚科科技开发有限公司 售后服务部
邮编：519085