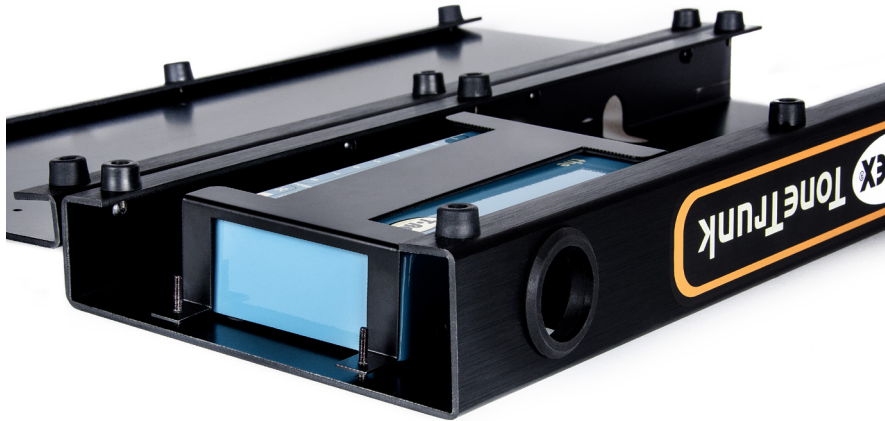


POWER SUPPLY BRACKET

fits T-Rex ToneTrunk 45, 56, 70, Minor and Major



Note:

The picture is an example of installation. You can install the bracket in a different horizontal position on your board.

The boards have pre-drilled holes for this purpose. The available positions vary with the board models.

The enclosed, self-adhesive rubber mat should be attached to the bracket if the height of your power supply is less than 34 mm / 1.34 in.

Designed for T-Rex FuelTank Junior/Classic/Chameleon and Pedal Power 2 plus.

Dimensions:



LEVELING BRACKET

fits T-Rex ToneTrunk 45, 56, 70 and Major



Note:

The picture is an example of installation. You can install the bracket in a different horizontal position on your board.

The boards have pre-drilled holes for this purpose. The available positions vary with the board models.

Dimensions:

