



TRIPLEPLAY FC-1 CONTROLLER QUICK START GUIDE

Welcome

Thank you for making Fishman a part of your musical experience. We are proud to offer the finest products available; high-quality professional-grade tools which empower you to sound your very best.

This intro guide provides a simplified setup for your new Fishman TriplePlay FC-1 Controller using the default settings within the pedal. Please consult our online documentation for complete information about how to get the most from your new product.

IMPORTANT: Do This First!

Before using your new FC-1, you must update the firmware and software for your TriplePlay Wireless Guitar Controller. Open the TriplePlay application and update your software by selecting "Check for Update..." from the Options pull-down menu. After you've installed the newest available software version, make sure your TriplePlay Controller and Receiver are paired, open the TriplePlay application and follow the software prompts to install firmware updates and reinitialize your devices.



TriplePlay Reinitialization

Host (TriplePlay USB Receiver Connected to FC-1)

This setup shows use of the FC-1 to host the TriplePlay USB receiver and send the wireless information from your guitar to an external hardware device, such as a MIDI sound module.



1) Connect the TriplePlay USB receiver to your FC-1 with Fishman logo aligned to the right side of the pedal. The pairing button should be accessible from this side when fully inserted.

2) Connect the 5-Pin **midi out** to the MIDI input on your Sound Module or other device. Settings on your TriplePlay controller can be edited using the patch manager in your TriplePlay application. Consult the complete online documentation for details.

Host (cont'd)

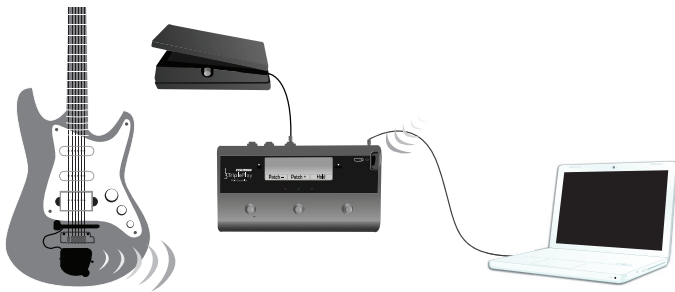
- 3) The default state of the TriplePlay hardware is Pitch Bend Range of +/- 12. If possible, set the pitch bend range of your sound module instruments to match this specification. Failure to do this may result in issues with string bending, slides and hammer-ons.
- 4) Connect your guitar's traditional pickup output to **guitar in** on the FC-1. Connect **guitar out** to your electric guitar amplifier.
- 5) Using the **patch -** and **patch +** switches will send program change commands to your connected sound module or other device. The **hold/loop** button will provide sustain if that feature is available on your selected sound. The guitar/mix/synth switch on your instrument's TriplePlay controller will toggle between your guitar and MIDI sounds.

FC-1 Software

Functionality of your FC-1 switches, displayed information, and TriplePlay hardware patch parameters can all be modified using our TriplePlay application (v1.3 or higher). Tracking can be improved by using multi-timbral instruments with the TriplePlay controller in MONO Mode. Consult the complete online documentation for details.

Peripheral (FC-1 USB connected to computer)

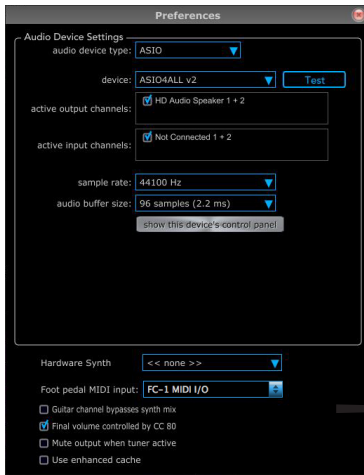
This setup shows use of the FC-1 as a foot controller connected to a Mac or Windows computer running the TriplePlay software. In this setup, your TriplePlay USB Receiver should be inserted into to the USB port of the FC-1.



- 1) Connect the FC-1 **usb** port to your computer using the provided cable, and open the TriplePlay application.
- 2) Open Preferences from the Options pull-down menu.
- 3) Under the Foot Pedal MIDI Input menu select FC-1 MIDI (Mac) or MIDIIN4 (Windows).

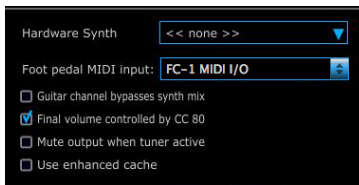
Peripheral (cont'd)

4) If you have purchased an expression pedal and connected it to your FC-1 **exp pedal** input, check the box "Final volume controlled by CC 80."



5) Using the **patch -** and **patch +** switches will change patches in your active patch menu within the TriplePlay software. Use of the **hold/loop** button will perform hold, loop or sustain based on the parameters of the selected patch. A connected expression pedal will control final volume (post Master). The guitar/mix/synth switch on your instrument's TriplePlay controller will toggle between your guitar's output and MIDI sounds.

There are several uses for Peripheral Mode beyond the most popular option given above. Functionality of your FC-1 switches and EXP input can all be modified using our FC-1 Utility software. Consult the complete online documentation for details.



Legal

© 2015 FISHMAN TRANSDUCERS. All rights reserved. Printed in USA. TriplePlay is a registered trademark of FISHMAN TRANSDUCERS. OS X, Mac and the Mac logo are registered trademarks of Apple Inc. in the US and other countries. Windows and the Windows logo are registered trademarks of Microsoft Inc. in the US and other countries.

Technical support, troubleshooting tips and other product information can be found at
www.fishman.com/tripleplay

FISHMAN[®]

www.fishman.com