

Required Apparatus:

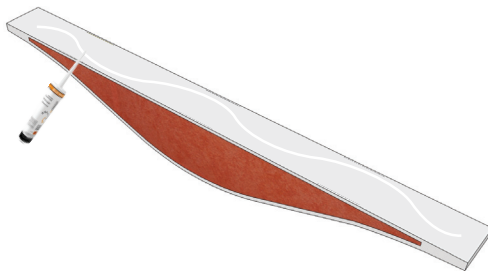
- Flexi Wave (1 and 1/2 Panel)
- Vicoustic Flexi Glue
- 1 x Glue Gun

Installation Instructions:

Ceiling surfaces should be examined prior to installation, ensuring they are clean, smooth, and dry. If you have unpainted gypsum board surfaces, these should be primed with a drywall primer (or another material manufactured especially for the purpose), to equalize the absorption between the gypsum board face paper, joint compound, and skin coating materials. You should then apply the paint, and allow air circulation in order to dry the paint within the time frame specified by the paint manufacturer. Please ensure the paint is dry before installing the acoustic panel. Make sure the room has all the conditions necessary to receive the acoustic panels. After you apply the glue on the back of each acoustic panel, please ensure you hold the acoustic panel on the wall the required time (mentioned below), and ensure it stays fixed in place.

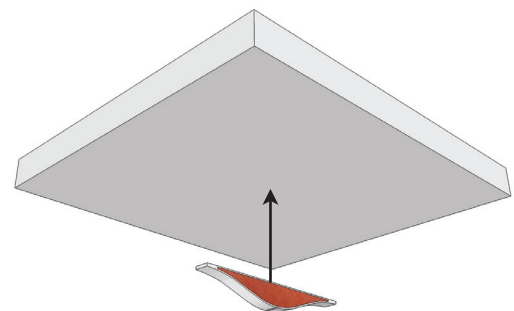
STEP 1

Place Flexi Glue in the back of the acoustic panel.



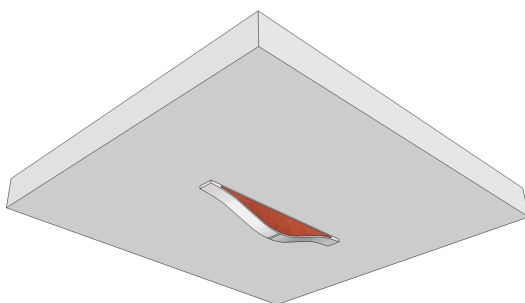
STEP 2

Apply the acoustic panel on the ceiling surface.



STEP 3

Secure the panel with the glue against the ceiling for about 10 seconds.



STEP 4

Remove it from the surface and put it back on the same spot and repeat, pressing against the surface for at least 40 seconds until the glue grabs.

