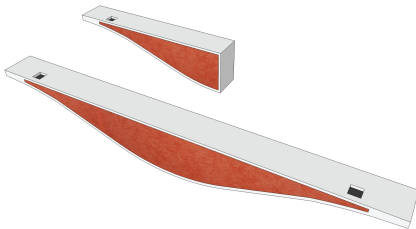


Flexi Wave | T-Bar

Page 1 of 1 |



Required Apparatus:

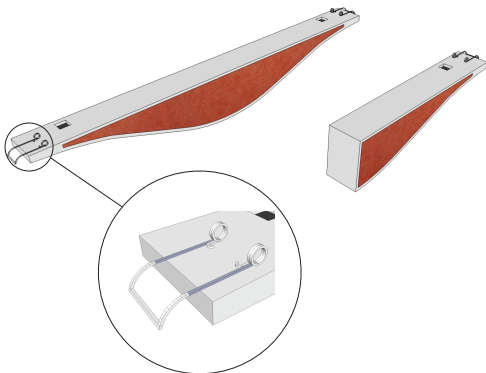
- Flexi Wave (1 and 1/2 Panel)
- 2 x Flexi Wave Spring (1 Panel or 1 x Flexi Wave Spring (1/2 Panel))
- 1 x Z-metal piece (1 and 1/2 Panel - perimeter application)
- 2 x screws (each Flexi Wave Spring)
- Screwdriver
- Vicoustic Flexi Glue
- 1 x Glue Gun

Installation Instructions:

Please ensure the ceiling profiles are correctly assembled, and ready to receive the acoustic panels. Make sure the room has all the conditions necessary to receive the acoustic panels. Our Acoustic panels follows the standard dimensions, fitting perfectly in most common false ceilings. Flexi Wave is a product destined to be lagged, so a very precise study of the support structure should be carried out. It's also very important to study the amount of accessory elements that are necessary.

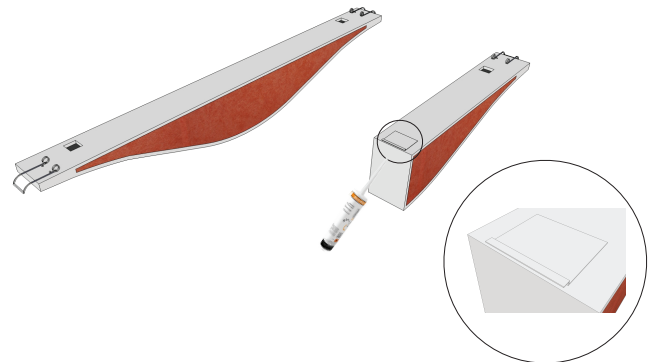
STEP 1

Fix the Flexi Wave Spring in the panel. Should be used 2 units for one complete panel and 1 unit for a half panel. Each Flexi Wave Spring is fixed using 2 screws in 2 points clearly marked in the panel.



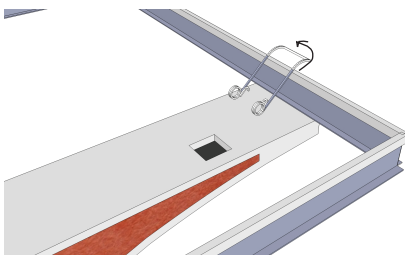
STEP 2

In the panels that will get in touch with the perimetrical ceiling structure, should be glued one Z-metal piece. The Z-metal piece should be in face with the lateral side of the panel.



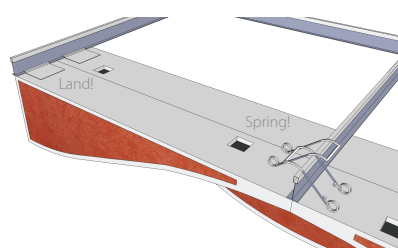
STEP 3

Install the panels pushing the Flexi Wave Spring up in order to embrace the T-Bar. Flexi Wave should land below the T-Bar.



STEP 4

In the panels that get in contact with the periphery place the Z-metal piece over the L-shaped profile and spring on the other side.



STEP 5

Install all the panels following the same procedure. They should be lagged as shown below.

