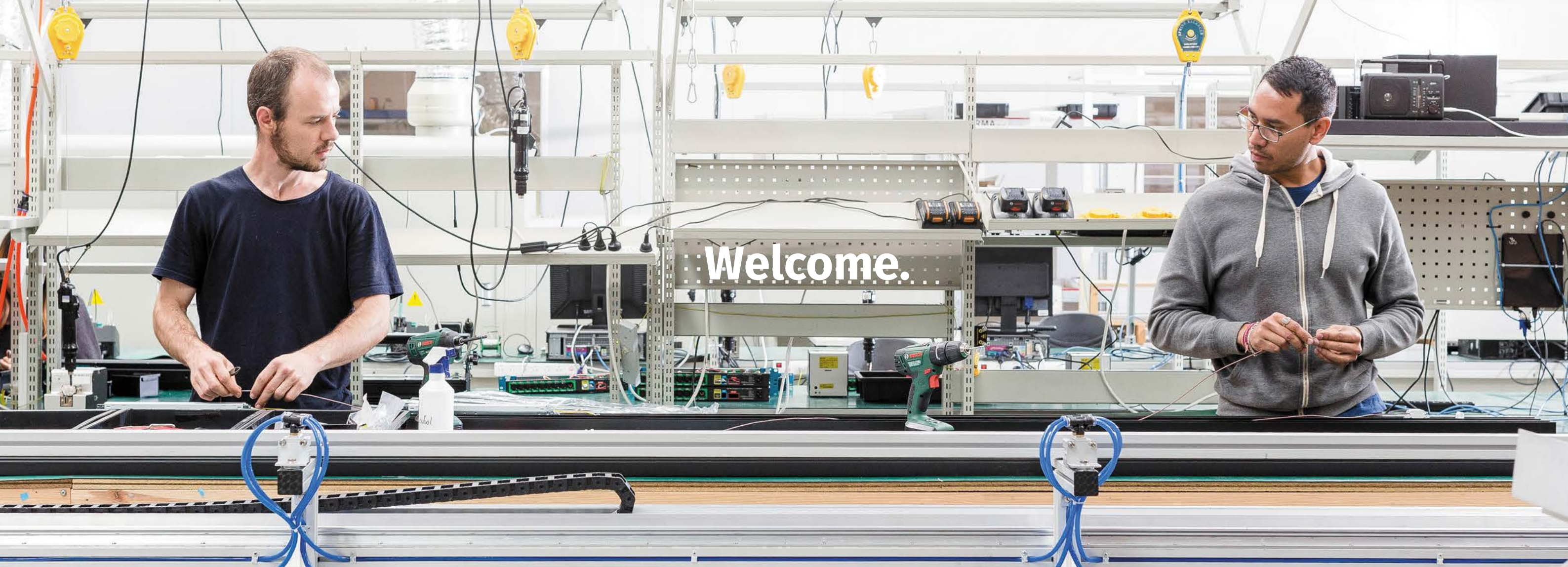


ENTTEC

Controls . Lights . Solutions



Welcome.

ENTTEC HQ / ASIA-PACIFIC

7 Macro Court
Rowville, VIC 3178
Australia
+61 3 9763 5755
sales@enttec.com.au

ENTTEC EUROPE


115 Mare Street
London E8 4RU
United Kingdom
+44 (0) 207 061 6210
sales@enttec.co.uk

ENTTEC AMERICAS

3874 South Alston Ave, Suite 103
Durham, NC 27713, USA
(888) 454-5922
sales.americas@enttec.com

TECHNICAL SUPPORT

support@enttec.com

facebook.com/enttec 

instagram.com/enttecofficial 

youtube.com/enttecdotcom 

twitter.com/enttec 

Contents

Introduction	4
Software	8
Controls	14
Network	24
DMX Management	26
Show Recorders	32
Lights	34

Our story.



GLOBAL HQ /
ASIA-PACIFIC
MELBOURNE, AUSTRALIA



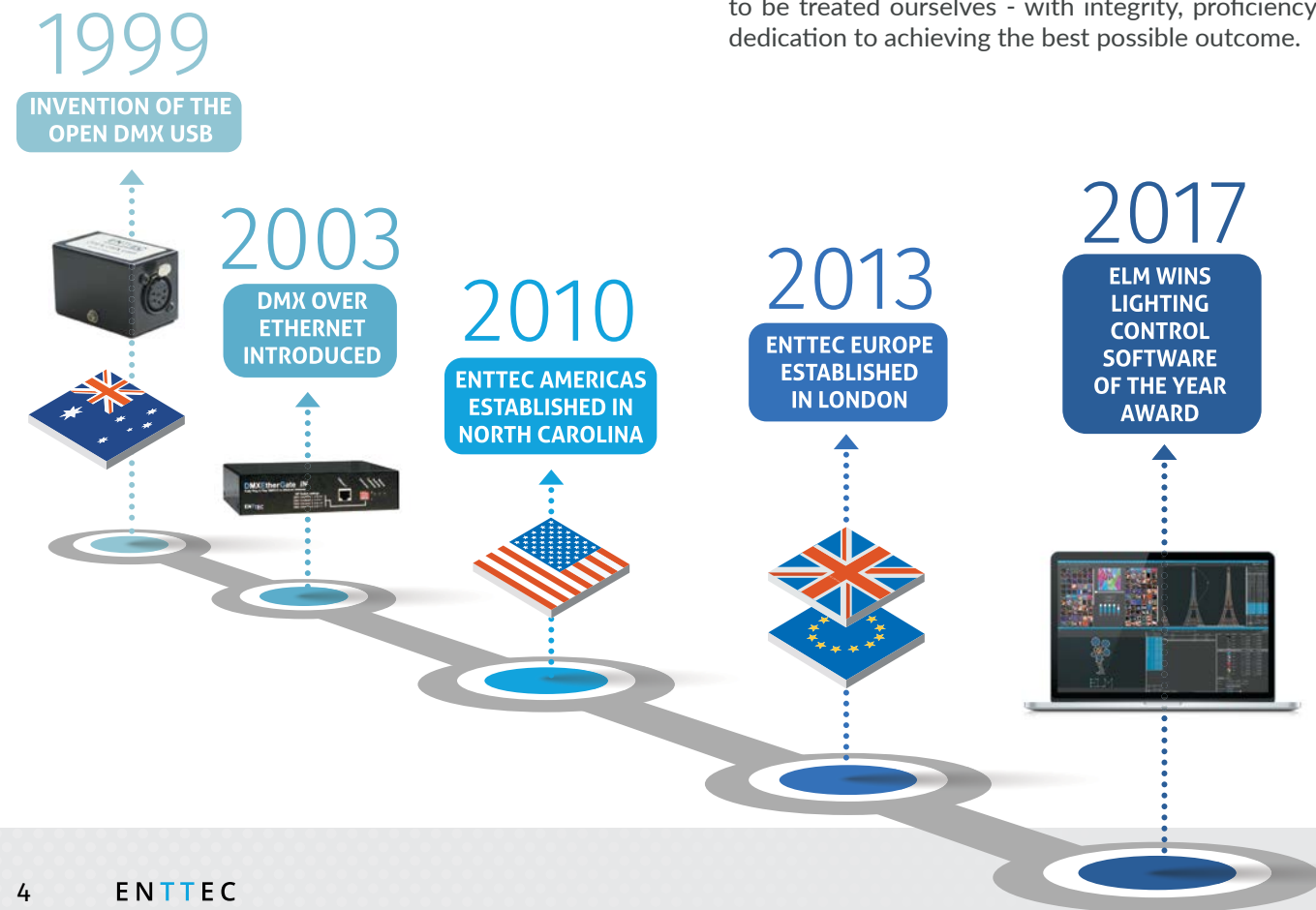
From little things, big things grow.

Australians are well-known for their no-nonsense, pioneering spirit. And having confronted the question, "Why can't I control DMX lights from a computer?" this is precisely what Nicolas Moreau channelled in 1999 when he conceived and developed a world first PC-to-light fixture interface: the **Open DMX USB**.

Designed to be high-quality, affordable, and compatible with existing systems, it was a well-engineered yet deceptively simple device. What's more, as the 'Open' part of the name suggests, its schematics were made

freely available for anybody to study and replicate, thus ensuring that this new technology would rapidly spread and herald previously unheard-of creative possibilities that would revolutionise the lighting industry.

The ENTTEC brand grew from both this product and its transparent philosophy, rapidly developing a reputation, not just for engineering expertise, fine craftsmanship and technical innovation (with several products becoming global industry standards), but also for the kind of fast and flexible support and service that lighting professionals demand. We set out to treat our clientele as we'd like to be treated ourselves - with integrity, proficiency and dedication to achieving the best possible outcome.



Dating back to the year 2000, one of ENTTEC's oldest products, the original DMXPlayBack, sits behind a modern day control evolution, the intelligently-designed Pixel Port PR1.



Our products have played a role in projects for a range of international clientele, including:



An introduction to ENTTEC

As the scope and popularity of our product range increased, so did the need to expand our operations internationally. To accompany our state-of-the-art design and manufacturing facility in Australia, we established ENTTEC Americas in 2010, based in the famous Research Triangle region of North Carolina, USA, as well as ENTTEC Europe in 2013, with an office in London and dealers throughout the continent.

Now a major player in the global lighting industry - known for our high-end LED luminaires, pixel system innovations, and true end-to-end solutions for virtually any project - we like to keep our focus firmly on the future through continual research and testing.

Our momentum derives from a genuine hunger to push beyond the boundaries of what's currently possible, and the desire to pass our discoveries on to you.

It is our goal to ensure that our products continue to inspire users throughout the world to produce amazing visuals showcasing the zenith of creative technology.

"A well-designed and built lighting system does more than provide illumination. It provides inspiration."

Nicolas Moreau
ENTTEC founder



We are the pixel experts.

If you're looking for an end-to-end solution to produce a spectacular lighting display that's not only highly customisable, but simple to configure and control, look no further than ENTTEC's famous pixel system.

Thanks to years of meticulous research and development, our pixel technology is designed to give you the power to harness an incredible selection of compatible devices in a multitude of ways, bringing an almost infinite array of creative possibilities on any scale.

Why pixels?

With traditional setups, every LED in a series has to do the same as the others. But with pixel technology, each LED can be controlled independently - opening the door to almost countless possibilities.

The ENTTEC pixel system

START
HERE



Mapping PAGE 8

Simply choose your favourite PC or Mac software to do this. ENTTEC LED Mapper (ELM) was voted Best Lighting Control Software of the Year by a panel of industry experts at the Live Design Awards 2017.

ELM will enable you to map vector curves and other tricky shapes, using the internal effects library or even your own videos or audio to help shape your show.



Networking PAGE 24

Use a gateway such as the HYPERION HP1 to send your show to a variety of locations via Ethernet.



For larger projects PAGE 14

The PIXELATOR is the world's only Gigabit pixel converter, delivering rock-solid LED pixel mapping and perfect synchronization across 24 ports. Thanks to its brilliant engineering, it has the power to output 8160 pixels in total.

For smaller projects PAGE 19

Plug into a PIXEL PORT PR1, our handy, compact dual-DMX Universe driver can output 340 pixels. Featuring the most popular industry standard connectors, simply daisy-chain to get multiple outputs.



Add pixel tape PAGE 34

For tighter spaces and stealth installations, our range of classic 5V and 12V PIXEL TAPE is the way to go. Manufactured to the highest standards, with better substrates and thicker copper than other tapes on the market, ENTTEC pixel tapes are quality checked and tested by our team of engineers in order to ensure optimal compatibility with our range of controllers.



Inject data + power PAGE 15

Extend your layout up to 300 metres over standard CAT6 cable using ENTTEC's PLink protocol. Developed especially for pixel projects, simply BYO power supply and inject via a PLINK INJECTOR.

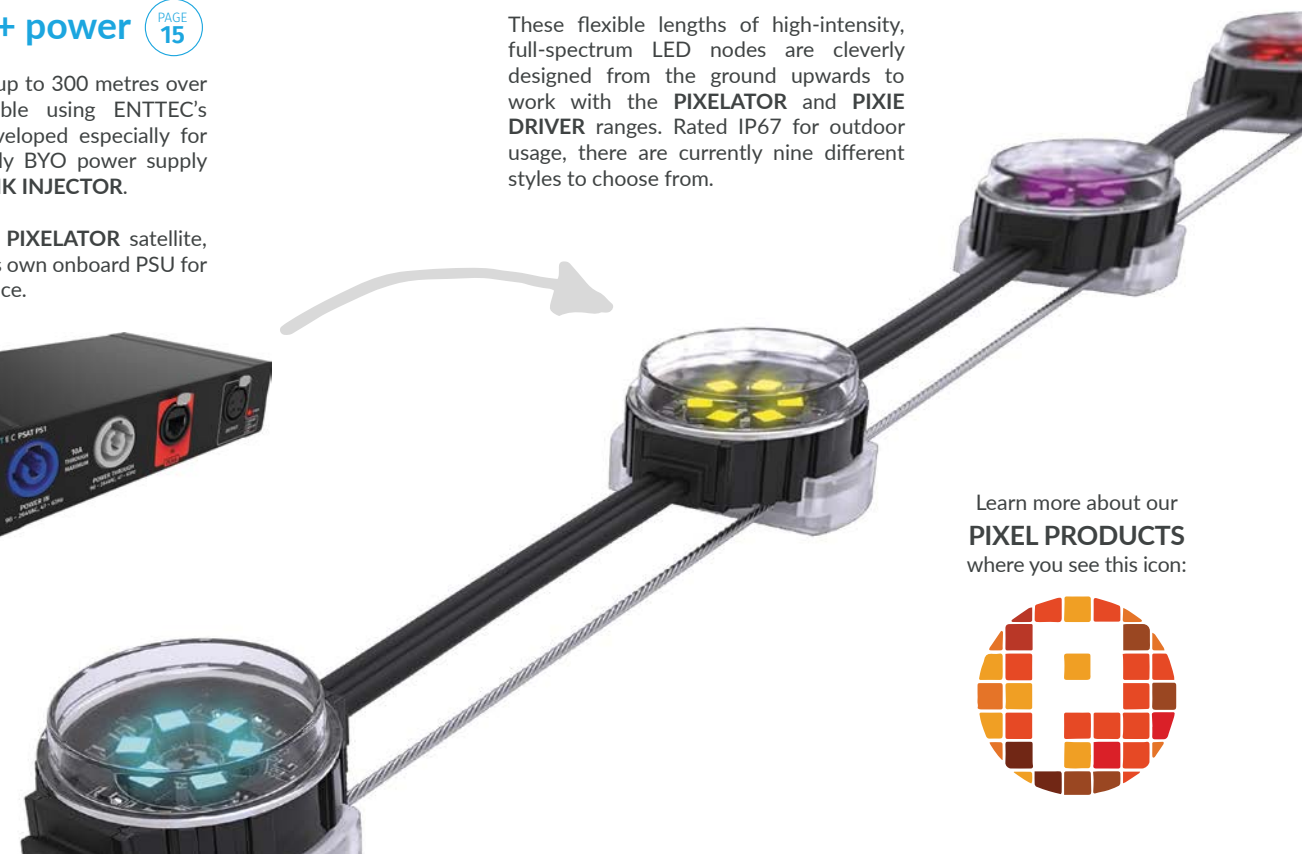
Or for the ultimate PIXELATOR satellite, the PSAT PS1 has its own onboard PSU for all-in-one convenience.



Add pixel dots PAGE 36

ENTTEC's 9PDOT series are the professional choice for LED installations.

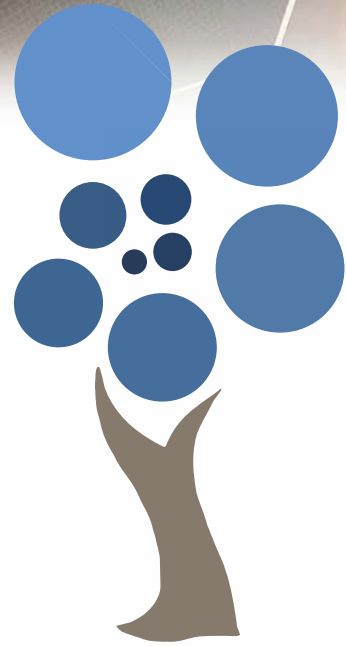
These flexible lengths of high-intensity, full-spectrum LED nodes are cleverly designed from the ground upwards to work with the PIXELATOR and PIXIE DRIVER ranges. Rated IP67 for outdoor usage, there are currently nine different styles to choose from.



GET
CREATING!

Learn more about our
PIXEL PRODUCTS
where you see this icon:





LIVEDESIGN
LIGHTING
CONTROL SOFTWARE
PRODUCT
2016-2017 OF THE YEAR



ENTTEC LED MAPPER (ELM)

SKU: 70581 (Licences: ENTRY: 4U / STANDARD: 16U / PROFESSIONAL: 96U / SUPER: 256U / ULTIMATE: 512U / ARCHITECTURAL: 1024U)

Let your creativity soar with the versatility, power and precision of ENTTEC's award-winning, content-based LED mapping software.

- > The first choice of leading designers
- > Highly-intuitive interface
- > Huge professional effects library
- > Audio reactive mix feature
- > Control up to 1024 Universes
- > Upgrade your license at any time

DATA IN



DATA OUT

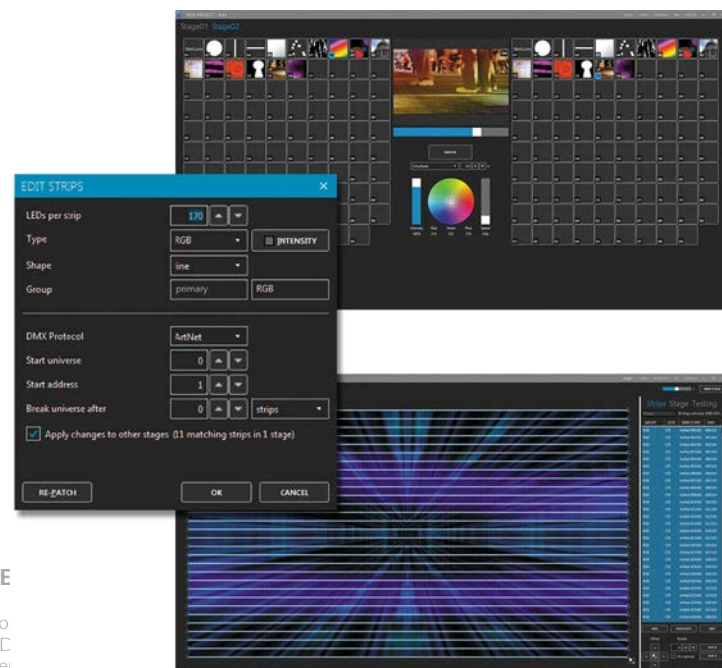


PLATFORM



SYSTEM REQUIREME

Windows: Windows 8 or
Intel i7, 8 GB RAM, NVIE
900 series/NVIDIA 10 ser



*using DMX USB PRO MK2.

ELM combines raster-based media with vector-based, scalable and repositionable objects to represent your LED strips. Choose whether your LEDs are in a line, curve or full loop with just a few mouse clicks - then stretch, resize or move them around on-screen to match your strips in the real world.

Load video files, still images or live streams into your media library and click on what you want to display. ELM supports HD video playback, is Spout compatible, and lets you run a show with live interaction, scheduled playback or via DMX control from a lighting console.



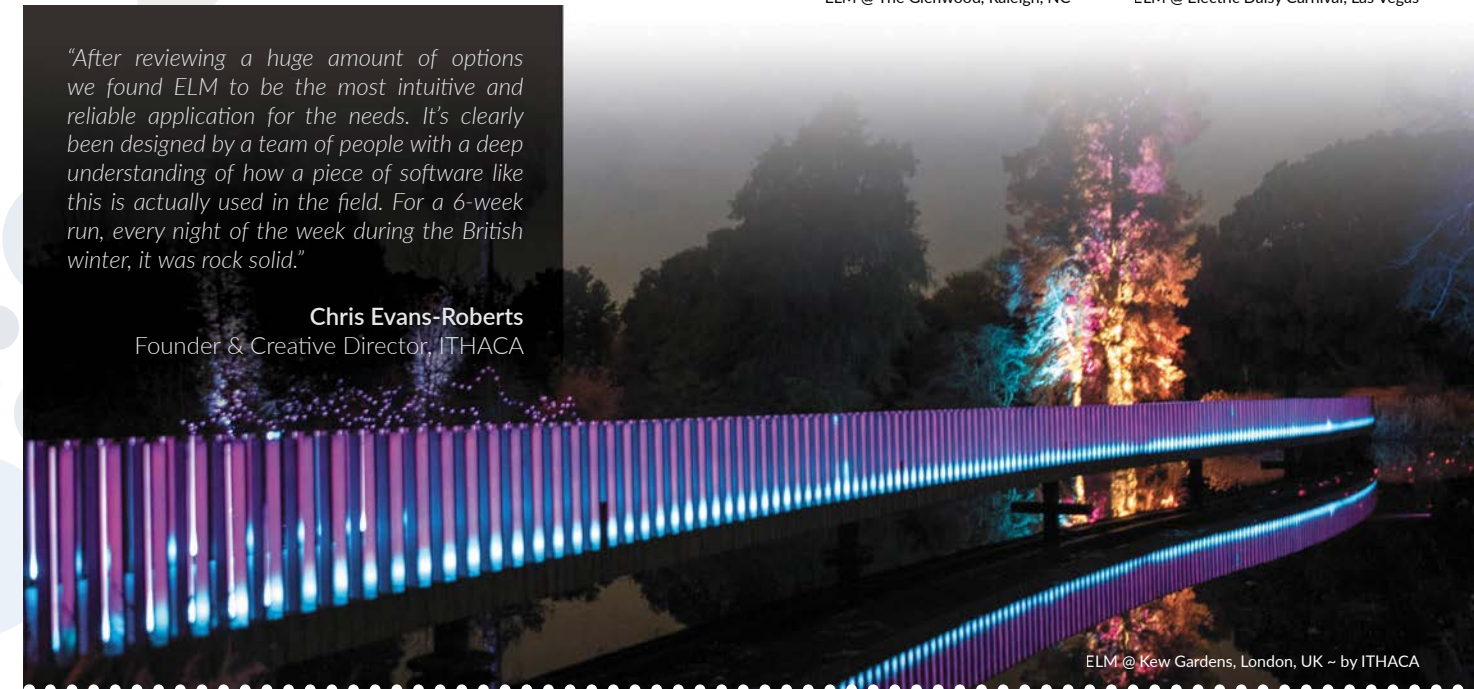
ELM @ The Glenwood, Raleigh, NC



ELM @ Electric Daisy Carnival, Las Vegas

"After reviewing a huge amount of options we found ELM to be the most intuitive and reliable application for the needs. It's clearly been designed by a team of people with a deep understanding of how a piece of software like this is actually used in the field. For a 6-week run, every night of the week during the British winter, it was rock solid."

Chris Evans-Roberts
Founder & Creative Director, ITHACA



ELM @ Kew Gardens, London, UK ~ by ITHACA

With support for Art-Net, sACN and KiNET protocols as input, you can integrate with all your favourite control software. Remote control via DMX, Art-Net, sACN, ENTTEC's DMX USB Pro, OSC as well as HTTP. Supports a wide range of LEDs such as: RGB, GBR, BRG, RGBW, RGBA, RGBAW/RGBWA and White fixtures. 16-bit pixels are also supported, such as ENTTEC 9PDOTs.

Optional support

ELM software runs on PC/Windows systems ONLY, but it can be controlled remotely by Mac devices with Ctrl for iPad by ON LX. With full implementation of the ELM media picker, users can configure stages and synchronize media in real time, creating a perfect front-end interface for any installation requiring efficient editing on the run. Ctrl for iPad is available from the App Store.



GOT A BAND?
Get
DMXIS



"Thanks for making such a killer product! I've been using the platform for four years and it's been one of the most essential purchases I have ever made. We're going to keep using it to create more intense light shows. More bands should get on it!"

Rich Watte
Singer/guitarist, Bone Cult

DMXIS

SKU: 70570

Easy-to-use, award-winning lighting control package designed for live musicians to run automated light shows.

- > Easy to learn, simple to use
- > Control any DMX512 lighting fixture
- > Tempo-based to sync with your music
- > Run as a VST from your favourite music software, such as Logic Pro, Ableton Live, Cubase or Mixmeister

PLATFORMS



DATA OUT



SYSTEM REQUIREMENTS

Windows: Supports Windows XP/Vista/7/8 and, Windows 10. Celeron 1GHz processor or better, 1GB RAM, 1024x768 display resolution.
Mac: OSX 10.7 or later, Intel Core Duo processor or better, 512MB memory, 1024x768 display (min.)
Please note: OSX10.4 - OSX10.6 is only supported by DMXIS 1.1.2



D-PRO

SKU: 70571 (8-Universe/4096 channels with disc and licence dongle), 70573 (2-Universe/1024 channels download only)

Packed with professional features yet simple to learn and use, no wonder D-PRO is known as being the best software in its class.

- > Lighting control for Mac or PC
- > Supports industry standard devices
- > Advanced Timing feature
- > Make and save live edits
- > Unlimited cues, groups and palettes
- > Choose from 2 or 8-Universe versions

PLATFORMS



DATA OUT



SYSTEM REQUIREMENTS

Windows: Windows Vista or better (Windows XP support up to D-PRO 1.4.2 only). **Mac:** OS X 10.7 or better, Intel processor.

"After much research, D-PRO proved to be the obvious choice. It's simple to understand, and has plenty of powerful features to add effects to our show, such as the ability to run lighting sequences alongside audio tracks to complement the performers' routines. The software proves itself time and time again in this fast-paced roadshow environment."

Joshua Old
Head of Lighting, Circus Royale



Software



RDM Controller

Control and monitor RDM fixtures remotely.



RDM Sniffer

Ensure your devices conform to standards.



RDM Library

Make your own custom app using Visual C++.



RDM Responder

Create and edit your own response.



RDM KIT + SOFTWARE

SKU: 70531 (RDM KIT) / 70531C (CONTROLLER) / 70532 (SNIFFER) / 70533 (LIBRARY) / 70534 (RESPONDER)

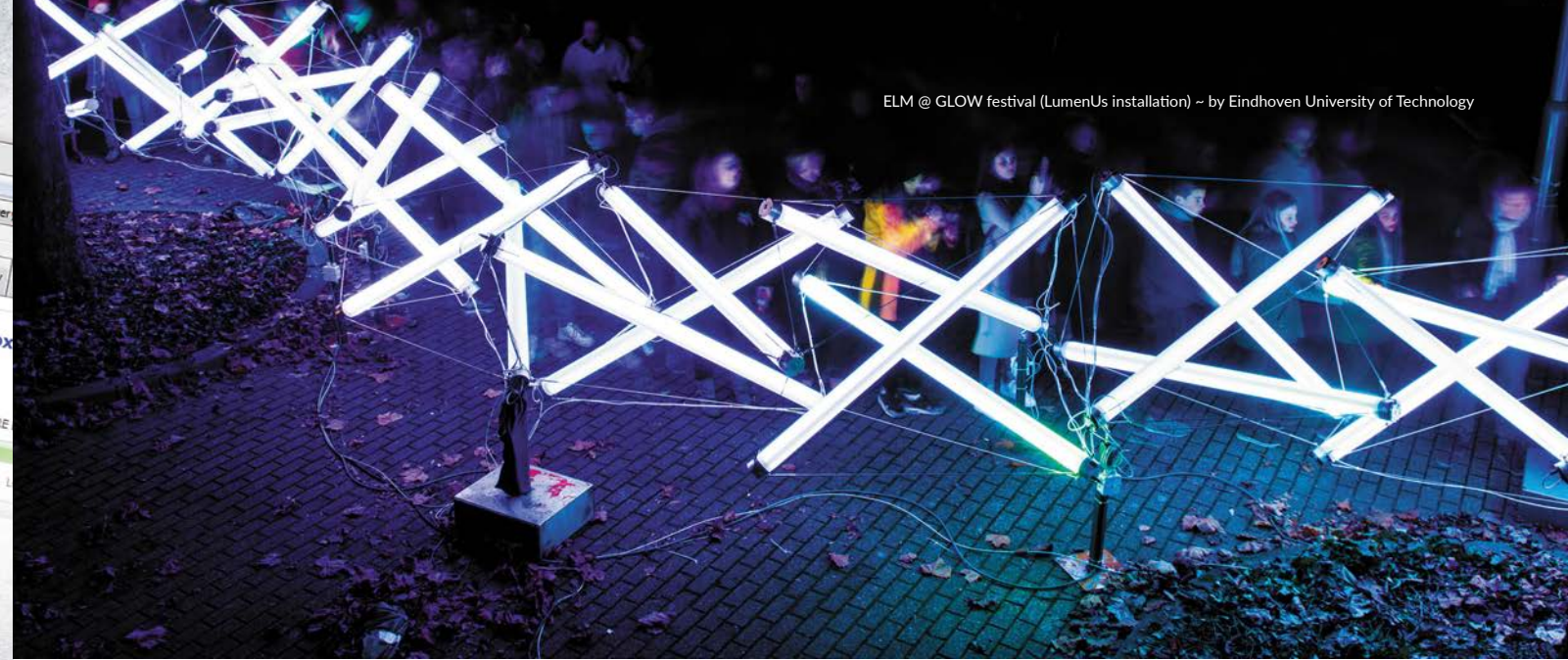
As impressive as our RDM products are as standalone apps and devices, they'll perform at their best working side-by-side.

- The all-in-one RDM kit contains:
- > RDM-enabled DMX USB PRO MK2
 - > Full licence key for RDM Controller and RDM Sniffer apps
 - > DMX cables and terminators
 - > Handy ENTTEC zip case

DATA IN: **USB**

PLATFORM:

DATA OUT: **DMX** **RDM**



ELM @ GLOW festival (LumenUs installation) ~ by Eindhoven University of Technology



LED tape and CV drivers @ Aerial South Wharf, Melbourne ~ by Meme Design



ELM @ LED ice rink, Canary Wharf, London ~ by TLSPixelite

PIXELATOR

SKU: 70060



Flagship Ethernet to Pixel Link converter with outstanding performance and perfect synchronisation across 24 ports.



- > Gigabit Ethernet (100/1000 Mbps)
- > Control your pixel tape or dots
- > 24 ports can power 8,160 pixels
- > Dual core CPU
- > Ultra-fast DDR memory
- > Ideal for any LED-mapped project

DATA/POWER IN



DATA OUT



PIXELATOR MINI

SKU: 70066



Our junior version of the Pixelator for those who don't require all the features. It may be small but it still packs a serious punch.

- > Ethernet connection (10/100 Mbps)
- > A compact way to control your pixel tape or dots
- > 8 ports, controlling 2 Universes each
- > Can handle up to 2,720 pixels
- > Simply configure via web browser

DATA/POWER IN



DATA OUT



PIXELATOR MINI PX1-8D

SKU: 71066



Super-compact Pixelator Mini for DIN rail applications. We've got every angle covered.

- > DIN rail-mountable pixel controller
- > A compact way to control your pixel tape or dots
- > 8 ports, controlling 2 Universes each
- > Can handle up to 2,720 pixels
- > Simply configure via web browser

DATA/POWER IN



DATA OUT



PSAT PS1

SKU: 75008-16 (24V 65W) / 75008-26 (5V 55W) / 75008-55 (12V 65W)



Need more power? Then look no further than the PSAT to supercharge your Pixelator or Pixelator Mini.

- > PLink Injector/power supply in one
- > 5V, 12V or 24V power options
- > PowerCON connections
- > Daisy-chain power with ease
- > Includes a 4-pin breakout cable

DATA/POWER IN



DATA/VOLTAGE/POWER OUT



PLINK INJECTOR

SKU: 73544 (12V-24V) / 73546 (5V)



Using ENTTEC's PLink protocol is the smartest way to connect and extend your pixel set-up as far as 300 metres from your Pixelator.

- > Enables the use of standard Cat6 cables to extend over long distances
- > Converts PLink data from your Pixelator or Pixelator Mini
- > Available in 5V, 12V and 24V options
- > Requires external DC power supply



DATA/POWER IN



DATA/VOLTAGE OUT



Weatherproof version available:
PLINK INJECTOR PJ1-56
SKU: 73923 / Rated-IP66

CVC3

SKU: 73920 (12V-24V) / 73921 (IP66 CVC3 CC1-36)

The CVC3 enables PLink data to be used to control your constant voltage (3-channel) RGB tape within the same setup as your pixel tape.

- > Enables the use of standard Cat6 cables to extend over long distances
- > Converts PLink data from your Pixelator or Pixelator Mini
- > Available as a 12V-24V unit
- > Requires external DC power supply



DATA/POWER IN



DATA/VOLTAGE OUT



Weatherproof version available:
CVC3 CC1-36
SKU: 73921 / Rated-IP66

PIXIE LINKER

SKU: 73545 (5V)



The essential link between your 5V Pixie Driver and your system.

- > Enables the use of standard Cat6 cables to extend over long distances
- > Plugs straight into your 5V Pixie Driver
- > Connect to PLink Injector(s) to control pixel tape/dots using PLink protocol



DATA IN



DATA OUT



PIXIE DRIVER

SKU: 73540 (5V: 110W) / 73541 (5V: 55W) / 73542 (12V: 65W) / 73543 (12V: 130W) / 73547 (24V: 65W) / 73548 (24V: 130W)



A powerful driver providing optimum control over your pixel tapes or dots. Even features pre-programmed shows to get you started.



8-way mounting rack available (SKU: 73550)



- > 5V, 12V or 24V power options
- > Different wattage options available
- > Control up to 300 RGB LEDs per output
- > Supports wide range of tapes/dots
- > Pre-program or run live
- > 2 x DMX ports (IN only: not daisy chain)

DATA/POWER IN



DATA/VOLTAGE/POWER OUT



PIXEL PORT PR1

SKU: 76302-16 (12V: 65W) / 76302-26 (24V: 65W) / 76302-55 (5V: 55W)



Professional grade, robust pixel driver which meets the needs of any lighting engineer.



- > 5V, 12V or 24V power options
- > 16-bit dimming
- > Comes complete with PowerCON and EtherCON in/out
- > Standalone, fixture and live modes
- > Can drive 340 RGB pixels

DATA/POWER IN



DATA/VOLTAGE/POWER OUT



CV DRIVER MK2

SKU: 73520 (24V) / 73522 (12V)

An all-in-one driver that can power up to 25m of 12V or 24V LED tape from a single unit. Simply daisy chain to extend your project.



8-way mounting rack available (SKU: 73550)

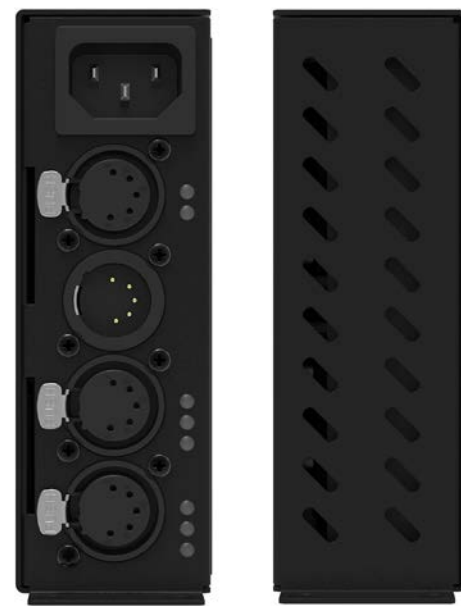
- > Drives constant voltage (CV) tape
- > Onboard power supply
- > 12V or 24V options
- > DMX controllable
- > Configurable using any RDM controller
- > In-built temperate and voltage sensors

DATA/POWER IN

DMX 90-264 VAC

DATA/VOLTAGE/POWER OUT

CV control tape 12-24 V 250 W



DIN-LED4PX

SKU: 71003

Constant voltage DIN-rail LED driver for superior control over high-power applications.

- > 4-channel constant voltage driver
- > DMX/RDM input
- > Each channel controls up to 1A @ 24V
- > Adjustable speed auto-mode programs
- > Dimming is performed with a 500Hz PWM signal and 8-bit resolution

DATA/POWER IN

DMX 7-24 V

VOLTAGE OUT

1A /channel



DIN-LED4

SKU: 71005 (DIN-LED4 350X) / 71007 (DIN-LED4 700X) / 71008 (DIN-LED4 1000X)

Constant current DIN-rail LED drivers with DMX/RDM input and four outputs.

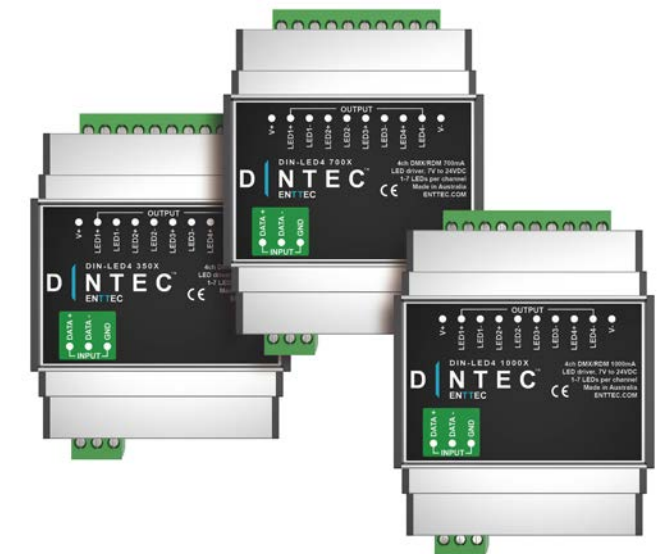
- > 4-channel constant current drivers
- > Available in three versions: 350, 700 and 1000mA (max current per output)
- > Adjustable speed auto-mode programs
- > Dimming is performed with a 500Hz PWM signal and 8-bit resolution

DATA/POWER IN

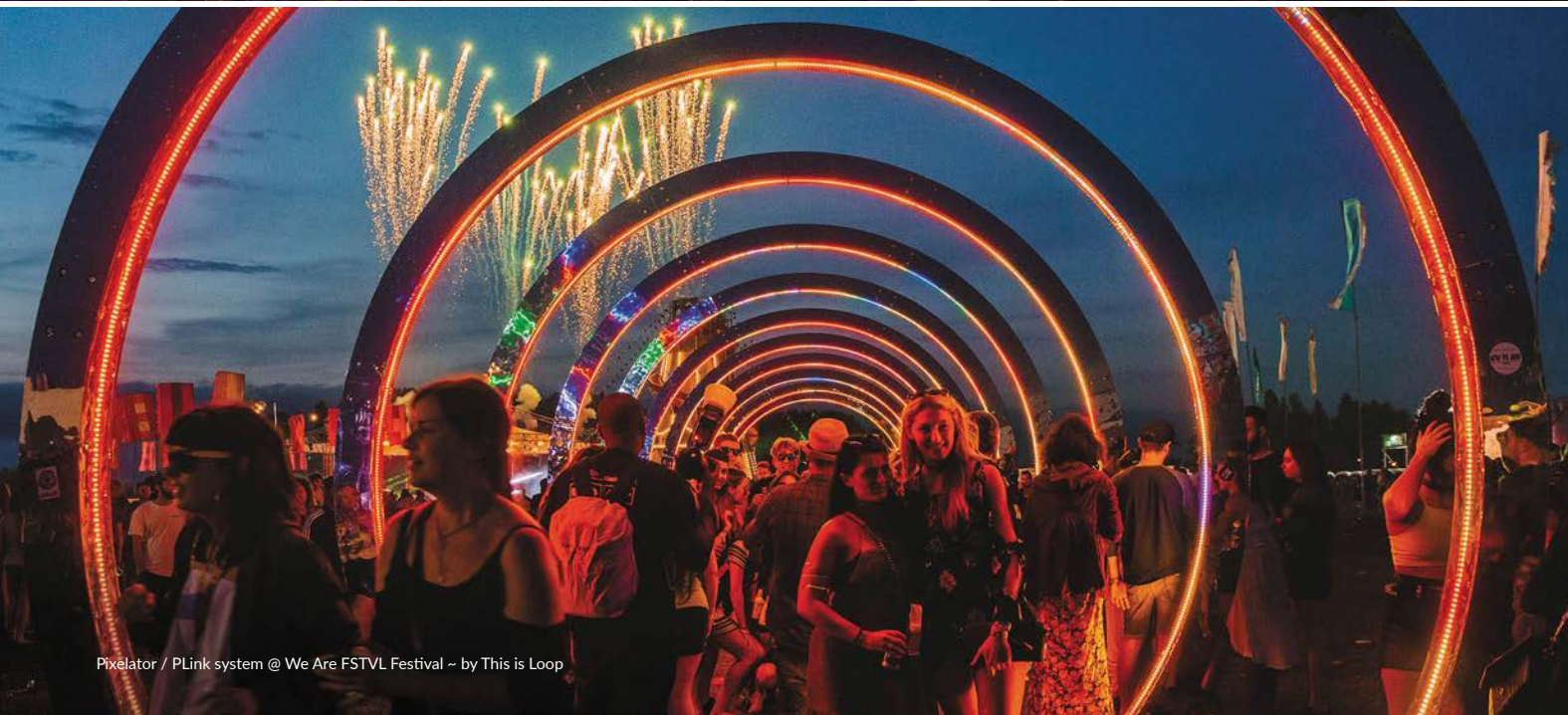
DMX 7-24 V

VOLTAGE OUT

350-1000 mA /channel 7-24 V



ELM @ Glastonbury Festival ~ by ON LX



Pixelator / PLink system @ We Are FSTVL Festival ~ by This is Loop



9PDOT pixel dots / PLink system / Pixelator Mini @ Australian Open, Melbourne ~ by Landor / The P.A. People



Custom LED pixel installation @ Melbourne Airport ~ by Mint Lighting Design / ENTTEC

HYPERION HP1

SKU: 71025 (HP1-82F) / 71026 (HP1-81) / 71027 (HP1-82R) / 71028 (HP1-83F) / 71029 (HP1-83R)



Our touring grade network switch, which has been designed for life on the road.



Available with a front or rear opticalCON port (HP1-82F/HP1-82R), LC port (HP1-83F/HP1-83R) or without optical connectivity (HP1-81).

- > Optional optical connections: choose from front or rear OpticalCON or LC
- > Compatible with many protocols
- > Redundancy looping
- > Easy webpage configuration
- > 1U rack mountable

D-SPLIT

SKU: 70572 (2 x 3-PIN + 2 x 5-PIN) / 70575 (4 x 5-PIN)

An optical isolator and splitter for DMX512, D-Split offers 4 outputs, each of which can be used to create a new chain.

- > Extend your DMX chain
- > 2 x 5-pin/2 x 3-pin or 4 x 5-pin options
- > All ports optically-isolated: protected against up to 1000V of stray voltage
- > Super-portable and lightweight
- > PSU included



DATA IN



DATA OUT



RDS8 / RDS4

SKU: 70036 (RDS8) / 70037 (RDS4) / 71004 (DIN RDS4)

Realise the full potential of your DMX network with these 4 or 8 port isolated splitters, allowing RDM devices to talk back to a controller.



- > DMX/RDM compatible
- > Backup mode
- > 1 DMX input and 4 or 8 DMX outputs
- > Rack (8/4) and DIN-rail (4) versions
- > Fully compliant with ESTA, USITT and RDM ANSI Standards

DATA IN



DATA OUT



The DIN version of the RDS4 is a standard 4-module-wide DIN rail enclosure. Features machined aluminium case for durability.

DATAGATE MK2

SKU: 70044

Powerful and flexible, the Datagate MK2 allows you to control and direct DMX distribution on advanced networked systems.

- > Advanced data manipulation
- > Translates between DMX and Ethernet protocols
- > 8 DMX ports (input or output)
- > 1 Gigabit Ethernet port
- > Various licensing options

DATA IN

- Art-Net
- sACN
- DMX
- RS232

DATA OUT

- Art-Net
- sACN
- DMX



ETHERGATE MK3

SKU: 70070

With blazing speed and incredible reliability for an Ethernet to dual DMX gateway, the Ethergate MK3 is what you're after.

- > Supports a variety of protocols
- > Easily configurable via inbuilt web server
- > Can be operated as 2 DMX input, 2 DMX outputs or 1 in 1 out DMX ports

DATA IN

- Art-Net
- sACN
- DMX

DATA OUT

- Art-Net
- sACN
- DMX



STORM 24

SKU: 70050

Super-powerful Ethernet to DMX converter, designed for the distribution of large numbers of DMX Universes throughout large rigs.

- > Handles a huge amount of DMX-over-Gigabit Ethernet data with ease
- > Can control 24 DMX Universes
- > Ultra fast DDR memory
- > Brilliant for large-scale projects, theatres and other similar venues

DATA IN

- Art-Net
- sACN

DATA OUT

- DMX



STORM 8

SKU: 70055

The 8-port version of ENTTEC's 24-port Ethernet to DMX converter delivers the same power and potency in a compact form.

- > Multi-protocol support
- > Control up to 8 DMX Universes
- > Easily configured via web browser
- > 19-inch rack space fits two units
- > Onboard power supply

DATA IN

- Art-Net
- sACN

DATA OUT

- DMX



ODE MK2

SKU: 70306 (ODE MK2 WITH POE)* / 70405 (ODE MK2) / 71020 (DIN ODE MK2) / 71021 (DIN ODE POE MK2)*

Our ODE MK2 ("Open DMX Ethernet") is the simple way to convert your data using an Ethernet connection.



- > DMX In/Out
- > 10/100 Ethernet port
- > EtherCON connector
- > Power Over Ethernet versions available (require POE router or injector)
- > DIN-rail versions available

DATA/POWER IN



DATA OUT



DMX USB device comparison

Features ↓

	OPEN DMX USB	DMX USB PRO	DMX USB PRO MK2
Part # (SKU)	70303	70304	70314
ENTTEC Pixel product?	No	No	Yes
Max Output Channels	512 Channels	512 Channels	1024 Channels
DMX Out	Yes	Yes	Yes
DMX In	No	Yes	Yes
DMX Connector Type	5 pin DMX	5 pin DMX	5 pin DMX
Included Accessories	USB Cable	USB Cable	USB Cable DMX Breakout Cable
On-board Processing (timing and signal)	No. Dependent on the processing capabilities of your computer	Yes	Yes. 6 times faster than DMX USB Pro
Data & Power Line Isolation	No	1500V Isolation	1500V Isolation
Upgradeable Firmware	No	Yes	Yes
RDM Enabled	No	Yes. Requires firmware v2.4	Yes, with any firmware version
User Configurable (via PRO-Manager) Refresh Rate (1 to 40 Hz) Break Time (96 uS to 1.3 mS) MaB (10.6 uS to 1.3 mS)	No	Yes	Yes
Ability to Manage, Test, & Update (via PRO-Manager)	No	Yes	Yes
Standalone Playback	No	No	Yes. Limited to 1 Universe
MIDI In/Out Ports	No	No	Yes, when supported by the software in use. Check with developer
MIDI Control Capability	No	No	Yes. DMX + MIDI cable sold separately
Choose your own lighting software?	Yes	Yes	Yes

Who is it for? →

- > Students
- > Novice users
- > Amateur productions
- > Troubleshooters

- > Community theatres
- > Medium-sized AV production companies
- > Nightclubs
- > Events

- > Large venues
- > Large audio-visual production companies
- > Trade shows
- > Installers

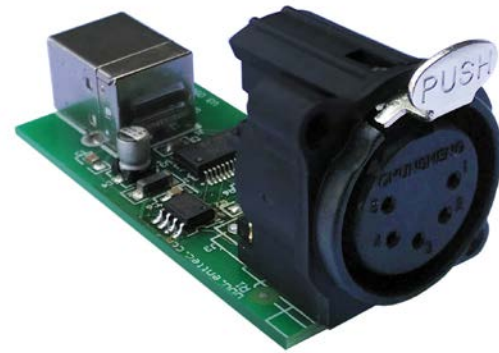


USB ASSEMBLED WIDGET

SKU: 70302

The lowest cost interface on the market. Ideal for beginners to learn how to control lights from your computer.

- > Control lights from your computer
- > Simple USB to 5-PIN XLR interface
- > Supports 1 Universe of DMX512
- > Compatible with popular Apps
- > Open source software/hardware



DATA IN



DATA OUT



OPEN DMX USB

SKU: 70303

The pioneering entry-level USB interface in a robust case. Hone your skills and get creating!

- > The authentic original classic
- > Supports 1 Universe of DMX512
- > Compatible with popular Apps
- > Open source software/hardware
- > Tough aluminium case



DATA IN



DATA OUT



DMX USB PRO

SKU: 70304

Industry standard USB 2.0 interface for DMX/RDM. Rugged, roadworthy and reliable.

- > Control lights from your computer
- > Industry standard device
- > RDM enabled
- > Works with almost any software
- > Configurable refresh rate
- > Surge protection



DATA IN



DATA OUT



DMX USB PRO MK2

SKU: 70314

Next generation professional DMX/USB interface with 2 Universe (1024 channel) standalone playback mode and MIDI interface.

- > Multi-Universe control
- > Super-powerful CPU
- > Unparalleled connectivity
- > Standalone playback
- > Inbuilt MIDI
- > Perfect with D-PRO software



DATA IN



DATA OUT



*via optional D-sub breakout cable.

DMX PLAYBACK MK2

SKU: 70044

Simple but with smart features, it's perfect for unattended light shows or continuously-running demonstrations.

- > Store up to 12 shows, each allowing up to 65,000 static scenes
- > Smooth fades between each show
- > Adjust times from 0-100 mins, with 0.1 second increments
- > Set timing via an external trigger



DATA IN

- DMX
- RS232

DATA OUT

- DMX

DMX STREAMER

SKU: 70015

Record a DMX sequence for up to 48 hours and stream it back on command or schedule.

- > Inbuilt clock /scheduler
- > Numerous control options
- > Easy to use LCD menu – no laptop required



DATA IN

- DMX
- RS232

DATA OUT

- DMX

DMX PLAYBACK REMOTE MK2

SKU: 70077

The ideal accessory for use with the DMX PlayBack MK2 or DMX Streamer: start or stop any of your shows with the press of a button.

- > Ideal for shopfronts or bars
- > No separate power supply required
- > Operate via infra-red
- > User-friendly



DATA OUT

- RS232

E-STREAMER MK2

SKU:70710 (8U WITH NO DMX PORTS) / 70711 (4U WITH DMX PORTS)

Our advanced show streamer allows you greater control over your DMX light shows.

- > Record up to 64U of DMX sequences
- > Playback over days, months or years!
- > Record and play shows simultaneously
- > Various licensing options
- > Web-based configuration



DATA IN

- DMX
- Art-Net
- sACN

DATA OUT

- DMX
- Art-Net
- sACN

PIXEL TAPE

SKU: SEE TABLE



Manufactured to the highest standards, our pixel tapes are designed, quality checked and tested by our team of in-house engineers. Available in different voltages, mapping orders and PCB colours, there's a tape for virtually every situation.

- > Individually-addressable LEDs
- > 32-bit, True Colour display
- > Scan frequency of 400Hz+/s
- > Lightweight, space-saving design
- > Adhesive backing for quick and easy installation
- > Operating temperature 5°-50°c

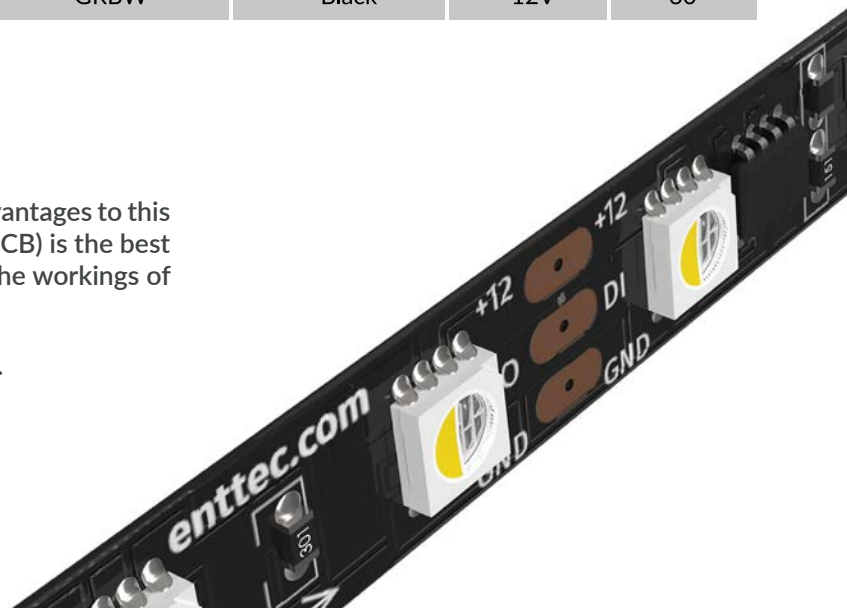
- We use thicker copper (2-3oz/sqft) and better quality substrates than other tapes on the market, meaning:
- > Extra durability
 - > Safer (better heat dissipation)
 - > Improved current flow
 - > Less voltage drop

SKU	PRODUCT NAME	MAPPING ORDER	PCB COLOUR	VOLTAGE	LEDs / m
8PL30-F	Pixel tape RGB: 8PL30 (5V) 5m	GRB	White	5V	30
8PL60-F	Pixel tape RGB: 8PL60 (5V) 5m	GRB	White	5V	60
8PL60-F-12	Pixel tape RGB: 8PL60 (12V) 5m	RGB	White	12V	60
8PL144-2	Pixel tape RGB: 8PL144 (5V) 2m	GRB	White	5V	144
8P60-5-B	Black pixel tape RGB 8P60 (5V) 5m	GRB	Black	5V	60
8PXW60-4-B	Black pixel tape RGBW 60 (5V) 4m	GRBW	Black	5V	60
8PW30-F	Pixel tape WWA 8PW30 (5V) 5m	WAW	White	5V	30
8PW60-F	Pixel tape WWA 8PW60 (5V) 5m	WAW	White	5V	60
8PX30-F	Pixel tape RGBW: 8PX30 (5V) 5m	GRBW	White	5V	30
8PX60-4	Pixel tape RGBW: 8PX60 (5V) 4m	GRBW	White	5V	60
8PXW60-F-12-B	Black pixel tape RGBW (12V) - 5M	GRBW	Black	12V	60

Why black tape?

Most LED tapes are white in colour. While there are advantages to this for certain applications, a black printed circuit board (PCB) is the best way to minimise external light reflection and conceal the workings of your installation when the display is switched off.

Its what stealth lighting designers' dreams are made of.



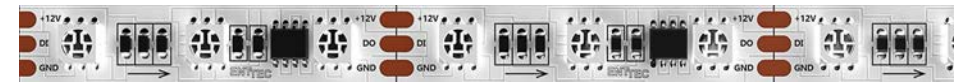
8PL30-F



8PL60-F



8PL60-F-12



8PL144-2



8P60-5-B



8PXW60-4-B



8PW30-F



8PW60-F



8PX30-F



8PX60-4



8PXW60-F-12-B



PIXEL DOTS

SKU: 9PDOT1 / 9PDOT2 / 9PDOT3 / 9PDOT4 / 9PDOT5 / 9PDOT6 / 9PDOT7 / 9PDOT8



Available in strings of 50, ENTTEC's pixel dot range is designed for indoor or outdoor use. Each pixel supports 12-bit colour resolution, giving you access to a palette of over 16.7 million colours with a scan frequency of up to 400Hz.

Why pixel dots?

- > Higher IP rating than tape
- > Visual appeal as a conspicuous feature
- > Greater light output than tape
- > Robust design: hard-wearing and long-lasting
- > No extrusions required or heat management issues
- > Can be installed into virtually any conceivable shape
- > Wide variety of designs to choose from



Dots can be safely wall or cable mounted with ease using the 9PDOT mounting clip accessory. SKU: 9PDOT(X)-CLIP

Google Pixel Wall

Interactive customer experience for Google's flagship retail stores, designed and installed by Grumpy Sailor using ENTTEC 9PDOT3 pixel dots.



9PDOT2
 Ø 40mm / 24V / 1.44W / 32.07 lm
 125mm pitch / black cable



9PDOT1
 Ø 35mm / 24V / 1.44W / 32.07 lm
 125mm pitch / black cable



9PDOT4
 Ø 42mm / 24V / 1.44W / 32.07 lm
 125mm pitch / black cable



9PDOT3
 Ø 35mm / 24V / 1.44W / 15.19 lm
 125mm pitch / black cable



9PDOT6
 Ø 16mm / 5V / 0.3W / 5.58 lm
 100mm pitch / black cable



9PDOT5
 Ø 25mm / 12V / 0.72W / 18.91 lm
 100mm pitch / black cable



9PDOT8
 Ø 16mm / 5V / 0.3W / 2.17 lm
 100mm pitch / white cable



9PDOT7
 Ø 16mm / 5V / 0.3W / 5.58 lm
 100mm pitch / white cable



Rated IP67, each 9PDOT features an on-board thermal fuse, as well as weatherproof connectors at the end of the string.

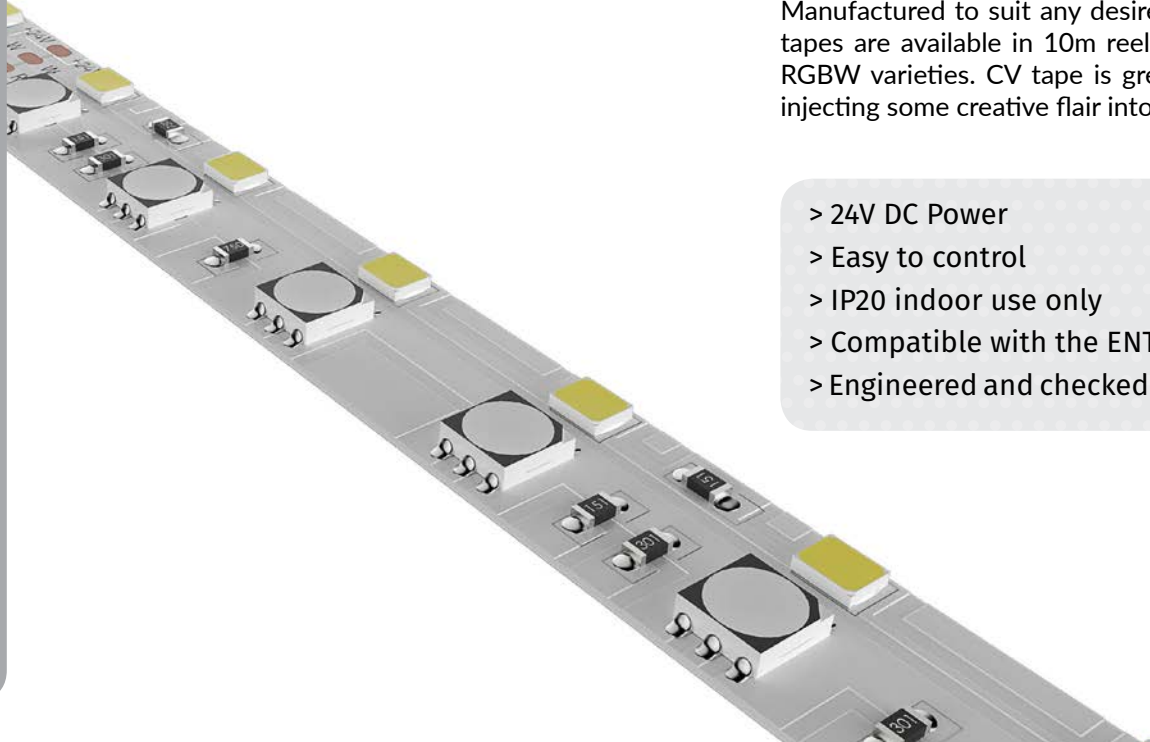


CONSTANT VOLTAGE (CV) TAPE

SKU: SEE TABLE

Manufactured to suit any desired mood or effect, our CV tapes are available in 10m reels of white, CTA, RGB and RGBW varieties. CV tape is great for uniform designs or injecting some creative flair into any project.

- > 24V DC Power
- > Easy to control
- > IP20 indoor use only
- > Compatible with the ENTTEC CV DRIVER MK2
- > Engineered and checked by our in-house team



FAMILY	PRODUCT CODE	BRIGHTNESS	COLOUR		DC POWER	MAX CONTINUOUS LENGTH
9C	9CL1	Low	White	6000K	24V	17m
	9CL2		Natural White	4000K		
	9CL3		Warm White	3000K		
	9CM1	Medium	White	6000K	24V	13m
	9CM2		Natural White	4000K		
	9CM3		Warm White	3000K		
	9CM4		Candle	2200K		
	9CH1	High	White	6000K	24V	9m
	9CH2		Natural White	4000K		
	9CH3		Warm White	3000K		
	9CU1	Ultra	White	6000K	24V	6m
	9CU2		Natural White	4000K		
9CU3	Warm White		3000K			



WHITE TAPE 9CL (LOW) / 9CM (MED) / 9CH (HIGH) / 9CU (ULTRA)

FAMILY	PRODUCT CODE	COLOUR		DC POWER	MAX CONTINUOUS LENGTH
9C	9CY	CTA	2800 -6500K	24V	13m

CTA TAPE 9CY



FAMILY	PRODUCT CODE	COLOUR	DC POWER	MAX CONTINUOUS LENGTH
9V	9VL4	RGB	24V	10m
	9VLW	RGBW	24V	10m

RGB TAPE 9VL4



RGBW TAPE 9VLW





PHERO 33

SKU: 73907-900-BD (Black Diffuser) / 73907-900-CD (Clear Diffuser) / 73907-900-FD (Frosted Diffuser)



With its stylish and slim form, the Phero 33 RGB pixel bar is the ideal direct touring partner.

- > 66 RGB LEDs
- > Quick and intuitive set up
- > Minimal power consumption
- > 3 creative diffuser options
- > Easy to daisy chain
- > Fully-compatible with Pixel System

DATA IN



DATA OUT



With the option of black, frosted and clear diffusers, Phero blends in perfectly with any application.



Hawthorn Theatrical Ltd were enlisted by project managers Taylor Bennett Partners to handle the technical production for Europe's largest digital marketing conference: the Adobe Summit, held at ExCel, London.

Hawthorn took Taylor Bennett's stunning design and made it a reality, using ENTTEC's high output Phero LED bars.

The easy-to-use, plug-and-play nature of Phero bars meant that they could be deployed quickly and easily to create the neon effect required in many zones of the venue. The triangles in the roof used 84 Pheros to create a stunning, bright and powerful outcome.

job designed by
HAWTHORN

FEATURING

ENTTEC
PHERO

ET3-X

SKU: 73932-300 (ET3-X 300mm) / 73932-600 (ET3-X 600mm)

With sheer engineering brilliance, the ET3-X produces a rich colour palette with unrivalled gamut and rendition.



- > Rated IP30
- > 300 or 600 mm in length
- > RGBW LEDs with 16-bit dimming
- > Up to 2920lm
- > 22°, 31° and 41° beam angle
- > DMX512 and RDM E1.20 protocols

DATA IN

DMX

DATA OUT

DMX



ET3-R

SKU: 73930-300 (ET3-R 300mm) / 73930-600 (ET3-R 600mm)

Our all-weather all-rounder bar is built for life on the road and perfect for exterior use.

- > Rated IP65
- > 300 or 600 mm in length
- > RGBWA LEDs with 16-bit dimming
- > Up to 5,000lm
- > 25°, 40° and 60° beam angle
- > DMX512 and RDM E1.20 protocols

DATA IN

DMX

DATA OUT

DMX



IP65

ET3-D

SKU: 73931-300 (ET3-D 300mm) / 73931-600 (ET3-D 600mm) / 73931-1200 (ET3-D 1200mm)

Designed to be installed easily in any indoor scenario, the bright and powerful ET3-D is a true industry workhorse.

- > Rated IP30
- > 300, 600 or 1200mm in length
- > RGBWA LEDs with 16-bit dimming
- > Up to 10,000lm
- > 25°, 40° and 60° beam angle
- > DMX512 and RDM E1.20 protocols

DATA IN

DMX

DATA OUT

DMX



enttec.com

MELBOURNE AUS / LONDON UK / RALEIGH-DURHAM USA

This brochure is intended as an introductory guide to a number of our core products. Please visit our website or ask your local dealer for information about accessories, cables, racks and powers supplies compatible with the above items, as well as our other lighting, control products and solutions which are not featured here.

© ENTTEC 2018. Prices above are subject to change: please check with your nearest ENTTEC office, dealer or our website prior to ordering. While all care has been taken to ensure that the information presented within this publication is accurate, it is intended as a guide only and ENTTEC shall not be held liable for any errors or omissions.