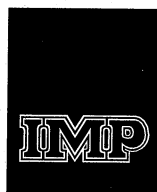


SAXOPHONE

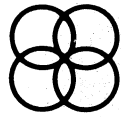
**TEAM
WOODWIND**

SUPPLEMENT



**International
MUSIC
Publications**

International Music Publications Limited
Griffin House 161 Hammersmith Road London W6 8BS England



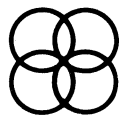
German tune

Traditional

3rd B \flat part with B \flat /E \flat duet

Notes with Stems up: 3rd part;
Stems down: 4th part; Two Stems: Both parts in Unison.

3rd & 4th E \flat part with B \flat /E \flat duet

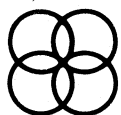


Lullaby

3rd B \flat part with B \flat /E \flat duet



3rd & 4th E \flat part with B \flat /E \flat duet



Canzonetta

3rd B \flat part with B \flat /E \flat duet

Fast

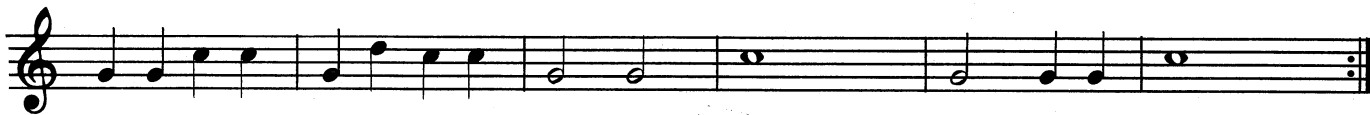
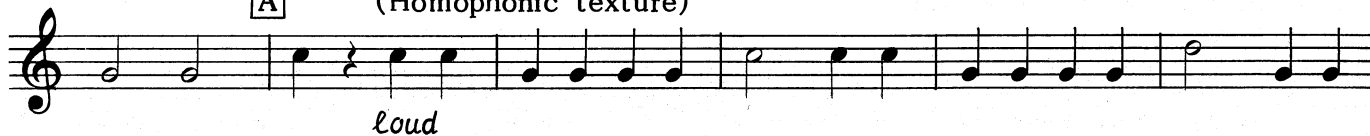
7

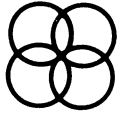
(Polyphonic texture)



A

(Homophonic texture)





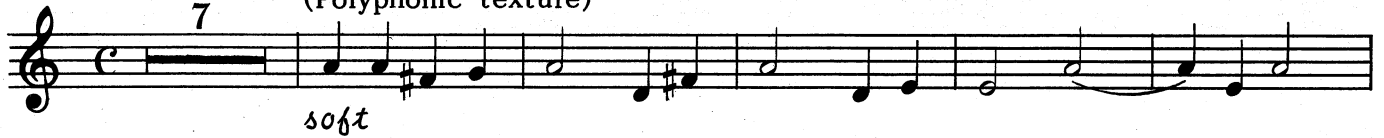
Canzonetta

3rd Eb part with Bb/Eb duet

Fast

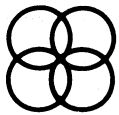
7

(Polyphonic texture)



A

(Homophonic texture)



Regal fanfare

4th Bb part with Bb/Eb trio

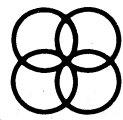
Maestoso



3rd Eb part with Bb/Eb trio

Maestoso





When I first came to this land

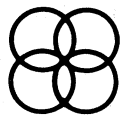
Traditional

3rd B \flat part with B \flat /E \flat duet

Fast and furious

3rd E \flat part with B \flat /E \flat duet

Fast and furious



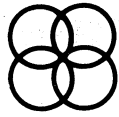
Blowin' in the wind

Words and music by
BOB DYLAN

3rd B \flat part with B \flat /E \flat duet

Steadily

Chorus

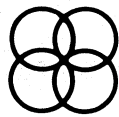


Blowin' in the wind

3rd & 4th E \flat part with B \flat /E \flat duet
Steadily

1 2

Chorus



Au clair de la lune

3rd B \flat part with B \flat /E \flat duet

Traditional

Simply

Fine

D.C. al Fine

3rd & 4th E \flat part with B \flat /E \flat duet
Simply

Fine

D.C. al Fine

Little donkey

Words and music by
ERIC BOSWELL

3rd B \flat part with B \flat /E \flat duet

Andante

Musical notation for the first staff, starting with a treble clef and a common time signature. The melody begins with a mezzo-forte (*mf*) dynamic, followed by a crescendo to piano (*p*) and mezzo-forte (*mf*), and then a decrescendo to forte (*f*). The piece concludes with a fermata and the word "Fine".

D.C. al Fine

Musical notation for the second staff, starting with a treble clef and a common time signature. The melody features dynamics of forte (*f*), mezzo-forte (*mf*), and forte (*f*), ending with mezzo-forte (*mf*). The piece concludes with a fermata and the instruction "(rallentando)".

3rd & 4th E \flat part with B \flat /E \flat duet

Andante

Musical notation for the third staff, starting with a treble clef and a 4/4 time signature. The melody begins with a mezzo-forte (*mf*) dynamic, followed by a crescendo to piano (*p*) and mezzo-forte (*mf*).

Musical notation for the fourth staff, starting with a treble clef and a 4/4 time signature. The melody begins with a forte (*f*) dynamic, followed by a fermata and the word "Fine". It then repeats the first two measures of the previous staff, marked with a "2" above the staff. The piece concludes with mezzo-forte (*mf*) dynamics, a fermata, and the instruction "(rallentando)".

D.C. al Fine

Tijuana brass

3rd B \flat part with B \flat /E \flat duet

Brightly

Musical notation for the first staff, starting with a treble clef and a 2/4 time signature. The melody begins with a forte (*f*) dynamic.

Musical notation for the second staff, starting with a treble clef and a 2/4 time signature. The melody features first and second endings, marked with "1" and "2" above the staff. The piece concludes with fortissimo (*ff*) dynamics.

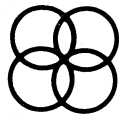
Musical notation for the third staff, starting with a treble clef and a 2/4 time signature. The melody features first and second endings, marked with "1" and "2" above the staff. The piece concludes with the instruction "D.C. al Fine" and the word "Fine".

Tijuana brass

3rd & 4th Eb part with Bb/Eb duet

Brightly

Musical score for 'Tijuana brass' in C major, 2/4 time. The score consists of three staves. The first staff begins with a forte (*f*) dynamic. The second staff includes first and second endings, with a fortissimo (*ff*) dynamic marking. The third staff concludes with a first ending marked 'D.C. al Fine' and a second ending marked 'Fine'.



I saw three ships

3rd Bb part with Bb/Eb duet

Traditional

Happily

Musical score for the first part of 'I saw three ships' in Bb major, 6/8 time. The score is on a single staff and begins with a mezzo-forte (*mf*) dynamic.

3rd Eb part with Bb/Eb duet

Happily

Musical score for the second part of 'I saw three ships' in Bb major, 6/8 time. The score is on a single staff and begins with a mezzo-forte (*mf*) dynamic.

Michael row the boat ashore

3rd Bb part with Bb/Eb duet

Traditional

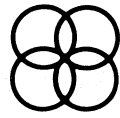
Moderately

Musical score for the first part of 'Michael row the boat ashore' in Bb major, 4/4 time. The score is on a single staff and begins with a mezzo-piano (*mp*) dynamic.

3rd & 4th Eb part with Bb/Eb duet

Moderately

Musical score for the second part of 'Michael row the boat ashore' in Bb major, 4/4 time. The score is on a single staff and begins with a mezzo-piano (*mp*) dynamic.



Canzona

ADRIANO BANCHIERI
(1568-1634)

4th B \flat part with B \flat /E \flat duet

Allegro

6

f *f*

A

1 2

f *ff* *ff*

3rd E \flat part with B \flat /E \flat duet

Allegro

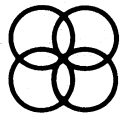
4

f *f*

A

1 2

f *ff* *ff*



O little town of Bethlehem

3rd B \flat part with B \flat /E \flat duet

Traditional

Moderato

mf *f*

mf

3rd E \flat part with B \flat /E \flat duet

Moderato

mf *f*

mf

St. Anthony Chorale

JOSEPH HAYDN
(1732-1809)

3rd B \flat part with B \flat /E \flat duet

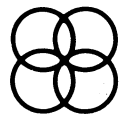
Moderato



3rd & 4th E \flat part with B \flat /E \flat duet

Moderato





March from *Judas Maccabaeus*

GEORGE FRIDERIC HANDEL
(1685-1759)

3rd B \flat part with B \flat /E \flat duet

Allegro

mf (*f*)

ossia

Fine

p

D.C. al Fine

3rd/4th E \flat part with B \flat duet

Allegro

[*p*] 3rd time

mf (*f*)

Fine

p

D.C. al Fine

