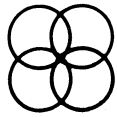


Lullaby

4th B \flat part with B \flat duet (or 4th E \flat part with E \flat duet)

3rd B \flat part with E \flat duet

3rd/4th E \flat part with B \flat duet



Canzonetta

4th B \flat part with B \flat duet (or 4th E \flat part with E \flat duet)

Fast 5 (Polyphonic texture)

(soft)

A (Homophonic texture)

(loud)

3rd E \flat part with B \flat duet

Fast 7 (Polyphonic texture)

(soft)

A (Homophonic texture)

(loud)

3rd B \flat part with E \flat duet

Fast 7 (Polyphonic texture)

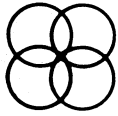
(soft)


A (Homophonic texture)

(loud)

■ No '4th E \flat part' to fit with the trumpet duet is provided due to limitation of compass. Tuba players should use '3rd E \flat part' (and trombonists use '4th B \flat ') as the piece is in invertible counterpoint.

Brass group warm-up 1 (Eb)



 is the sign for PAUSE, meaning the note should be held beyond its normal value

Harmony long notes

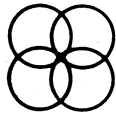
Practise tonguing on each note, devising your own rhythm patterns

Unison long notes


Slurred slow notes

Play all slurs holding down first and third valves.

Slurred fast notes



Brass group warm-up 1 (Bb)

 is the sign for PAUSE, meaning the note should be held beyond its normal value

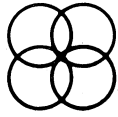
Harmony long notes

Practise tonguing on each note, devising your own rhythm patterns

Unison long notes

Slurred slow notes

Slurred fast notes



Regal fanfare

4th B \flat part with B \flat duet (or 4th E \flat part with E \flat duet)

Maestoso

3rd B \flat part with E \flat duet

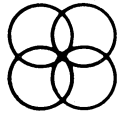
Maestoso

3rd E \flat part with B \flat duet

Maestoso

4th E \flat part with B \flat duet

Maestoso



When I first came to this land

Traditional

4th B \flat part with B \flat duet (or 4th E \flat part with E \flat duet)

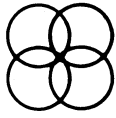
Fast and furious

3rd B \flat part with E \flat duet

Fast and furious

3rd/4th E \flat part with B \flat duet

Fast and furious



Blowin' in the wind

Page Ref:

Words and music
by BOB DYLAN

4th B \flat part with B \flat duet (or 4th E \flat part with E \flat duet)

Steadily

Chorus

3rd B \flat part with E \flat duet

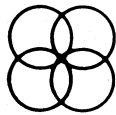
Steadily

Chorus

3rd/4th E \flat part with B \flat duet

Steadily

Chorus



Au claire de la lune

Traditional

Page Ref:

4th B \flat part with B \flat duet (or 4th E \flat part with E \flat duet)

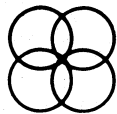
Fine D.C. al Fine

3rd B \flat part with E \flat duet

Fine D.C. al Fine

3rd/4th E \flat part with B \flat duet

Fine D.C. al Fine



Little donkey

words and music by ERIC BOSWELL

4th B \flat part with B \flat duet (or 4th E \flat part with E \flat duet)

Andante

Fine D.C. al Fine

f mf f mf (rall.)

3rd B \flat part with E \flat duet

Andante

Fine D.C. al Fine

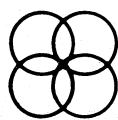
f mf f mf (rall.)

3rd/4th E \flat part with B \flat duet

Andante

Fine D.C. al Fine

Fine D.C. al Fine



Brass group warm-up 2 (Eb)

Harmony long notes

Three staves of music, each containing 16 long notes. The notes are slurred in pairs across the staves. The first staff starts on G4, the second on F4, and the third on E4. The notes progress through the scale: G, A, B, C, D, E, F, G, A, B, C, D, E, F, G.

Unison long notes

One staff of music with four measures of long notes. The notes are slurred in pairs. The dynamic markings are: (1) piano, (2) mezzo forte, (3) forte, (4) piano.

Scale exercise

One staff of music in 4/4 time, showing a scale exercise. The notes are slurred in pairs. The dynamic markings are: piano, crescendo, forte, decrescendo, p, f, p, f.

Slurs

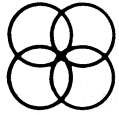
Play with 1st and 3rd valves depressed.

(1)

One staff of music in 3/4 time, showing a slur over a scale exercise. The notes are slurred in pairs.

(2)

One staff of music in 5/4 time, showing a slur over a scale exercise. The notes are slurred in pairs.



Brass group warm-up 2 (B \flat)

Harmony long notes

Three staves of music, each containing a sequence of long notes with slurs, illustrating harmonic progression.

Unison long notes

Four measures of unison long notes, labeled (1) through (4). The dynamic markings are *piano*, *mezzo forte*, *forte*, and *piano*.

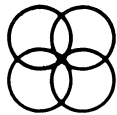
Scale exercise

A scale exercise in 4/4 time, starting with *piano* and *crescendo* to *forte*, followed by *diminuendo* to *piano*, and then alternating between *p* and *f* with slurs.

Slurs

Exercise (1) shows a slur over a sequence of notes in 3/4 time.

Exercise (2) shows a slur over a sequence of notes in 5/4 time.



Tijuana brass

4th B \flat part with B \flat duet (or 4th E \flat part with E \flat duet)

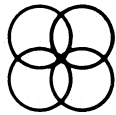
Brightly

3rd B \flat part with E \flat duet

Brightly

3rd/4th E \flat part with B \flat duet

Brightly



I saw three ships

Traditional

4th B \flat part with B \flat duet (or 4th E \flat part with E \flat duet)

Happily



3rd B \flat part with E \flat duet

Happily



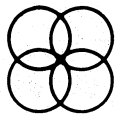
3rd E \flat part with B \flat duet

Happily



4th E \flat part with B \flat duet

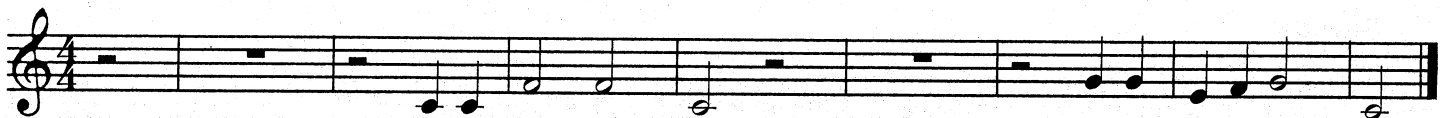
Happily



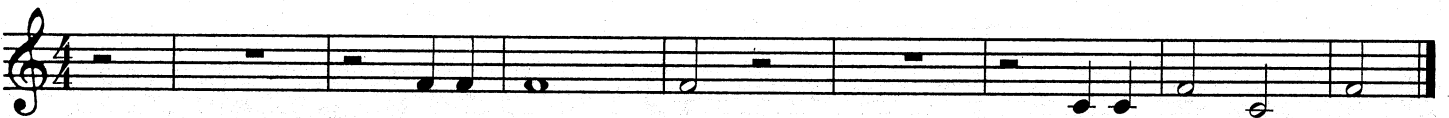
Michael row the boat

Traditional

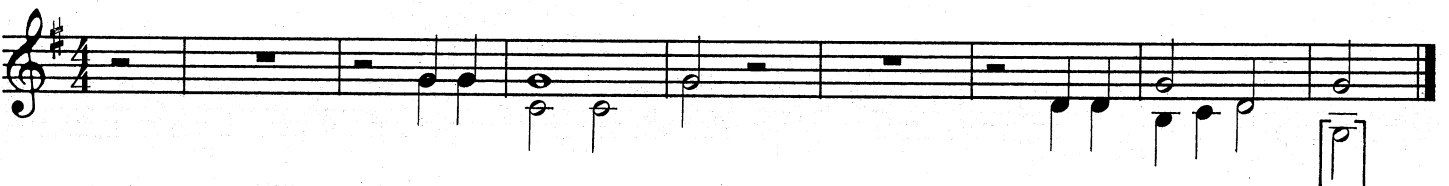
4th B \flat part with B \flat duet (or 4th E \flat part with E \flat duet)

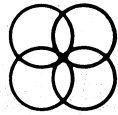


3rd B \flat part with E \flat duet



3rd/4th E \flat part with B \flat duet





Canzona

ADRIANO BANCHIERI (1568-1634)

4th B \flat part with B \flat duet (or 4th E \flat part with E \flat duet)

Allegro 6

f *f* *ff* *ff*

3rd B \flat part with E \flat duet

Allegro 4

f *f* *ff* *ff*

3rd E \flat part with B \flat duet

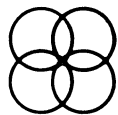
Allegro 4

f *f* *ff* *ff*

4th E \flat part with B \flat duet

Allegro 6

f *f* *ff* *ff*



O Little Town of Bethlehem

Traditional

4th B \flat part with B \flat duet (or 4th E \flat part with E \flat duet)

Moderato

3rd B \flat part with E \flat duet

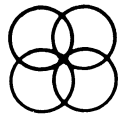
Moderato

3rd E \flat part with B \flat duet

Moderato

4th E \flat part with B \flat duet

Moderato



St. Anthony chorale

Page Ref:

JOSEPH HAYDN (1732-1809)

4th B \flat part with B \flat duet (or 4th E \flat part with E \flat duet)

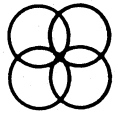
Moderato

3rd B \flat part with E \flat duet

Moderato

3rd/4th E \flat part with B \flat duet

Moderato



March

from *Judas Maccabaeus*

GEORGE FRIDERIC HANDEL (1685-1759)

4th B \flat part with B \flat duet (or 4th E \flat part with E \flat duet)

Allegro

mf-f

Fine

p

D.C. al Fine

3rd B \flat part with E \flat duet

Allegro

mf-f

Fine

p

D.C. al Fine

3rd/4th E \flat part with B \flat duet

Allegro

3rd time

mf-f

Fine

p

D.C. al Fine