

# SubZero

# HOME RECORDING BUNDLE USER MANUAL

BASE-2





# HOME RECORDING BUNDLE



## WARNING!

Do not open cover. No user-serviceable parts inside. Refer servicing to qualified service personnel  
Do not place the product in a location near a heat source such as a radiator, or in an area subject to direct sunlight, excessive dust, mechanical vibration or shock  
The product must not be exposed to dripping or splashing and no objects filled with liquids, such as vases, shall be placed on the product  
No naked flame sources, such as lighted candles, should be placed on the product

## VAROVÁNÍ!

Nezakrývejte. Uvnitř nejsou žádné součásti opravitelné uživatelem. S požadavkem na servis se odkažte na kvalifikované servisní oddělení.  
Neumisťujte produkt v blízkosti zdroje tepla, jako je radiátor, nebo na místo s přímým slunečním světlem, nadměrným prášením, mechanickými vibracemi nebo šokem.  
Produkt nesmí přijít do kontaktu s vodou a žádné objekty naplněné tekutinami, jako například vázy, by neměly být umístěny na produkt.  
Žádné zdroje otevřeného ohně, jako například svíčky, by neměly být umístěny na produkt.

## DVARSEL!

Dækslet må ikke åbnes. Ingen bruger-udskiftelige dele indeni. Overlad service til kvalificeret service personale  
Placer ikke produktet i nærheden af varmekilder såsom en radiator eller i direkte sollys, meget støv, mekaniske vibrationer eller stød  
Produktet må ikke udsættes for vand eller stænk, og ingen genstande fyldt med væsker, f.eks. vaser, må anbringes på produktet  
Må ikke placeres nær åben ild, tændte stearinlys må ikke placeres på produktet

## WAARSCHUWING!

Maak de behuizing niet open. Dit toestel bevat geen onderdelen die door de gebruiker kunnen worden vervangen. Laat onderhoud over aan bevoegd onderhoudspersoneel.  
Plaats het product niet in de buurt van een hittebron zoals een radiator of in direct zonlicht of in een stofrijke omgeving, mechanische vibratie of schok.  
Plaats het product niet in de buurt van spattende of lekkende voorwerpen gevuld met een vloeistof zoals bijvoorbeeld een vaas.  
Er mogen geen open vlammen zoals aangestoken kaarsen op de apparatuur worden geplaatst.

## VAROITUS!

Älä avaa kantta. Ei sisällä käytettäviä huollettavia osia. Huollot saa suorittaa vain päteviä huoltomies.  
Älä säilytä tuotetta minkään kuuman lähellä kuten patteri tai suorassa auringonpaisteessa, pölyisessä, mekaanisessa värinässä tai iskussa  
Tuotetta ei saa altistaa tippuvalle tai loiskeelle tai nesteitä sisältäviä tuotteita kuten maljakko eivätkä saa olla tuotteen lähetyvillä  
Avotulia kuten sytytetty kynttilä ei saa olla tuotteen päällä.

## ATTENTION!

Ne pas ouvrir le couvercle. Aucune pièce interne réparable par l'utilisateur. Confier la réparation à du personnel de réparation qualifié  
Ne pas laisser l'appareil à proximité d'une source de chaleur telle qu'un radiateur, dans un endroit directement exposé aux rayons du soleil, trop poussiéreux, ou pouvant subir des chocs mécaniques  
L'appareil ne doit pas être exposé aux gouttes d'eau et aux éclaboussures, et aucun objet rempli de liquide, tel qu'un vase, ne doit être posé dessus  
Ne placer aucune source de flamme nue, telle qu'une bougie allumée, sur l'appareil

## WARNUNG!

Öffnen Sie nicht das Gehäuse. Im Inneren befinden sich keine vom Benutzer zu wartenden Teile. Überlassen Sie Wartungsarbeiten qualifiziertem Fachpersonal.  
Stellen Sie das Produkt nicht an einen Ort in der Nähe einer Wärmequelle wie etwa eines Heizkörpers oder in einem Bereich mit direktem Sonnenlicht, übermäßigem Staub, mechanischen Vibrationen oder Stößen.  
Schützen Sie das Produkt vor tropfenden oder spritzenden Flüssigkeiten, und stellen Sie keine mit Flüssigkeiten gefüllten Gegenstände wie Vasen auf das Produkt.  
Offene Feuerquellen wie Kerzen dürfen nicht auf dem Gerät abgestellt werden.

## AVVERTIMENTO!

Non aprire il coperchio. Se fosse necessario, riferirsi ad un esperto.  
Non esporre il prodotto a fonti di calore, luce del sole diretta, polvere, vibrazioni meccaniche o altri possibili shock.  
Non esporre il prodotto a perdite di liquido o a spruzzi. Non appoggiare nessun oggetto contenente acqua sul prodotto.  
Non esporre il prodotto a fuoco, candele o oggetti simili.

## ADVARSEL!

Ikke åpne dekslet. Inneholder ingen deler som kan brukes. Overlat reparasjon til kvalifisert servicepersonell.  
Ikke plasser produktet i nærheten av varmekilder som f.eks. en radiator, eller i områder som er utsatt for direkte sollys, mye støv, mekanisk vibrasjon eller støt.  
Produktet må ikke utsettes for drypping eller spruting, og gjenstander som er fylt med væsker, som f.eks. vaser, skal ikke plasseres på produktet.  
Åpne flammer, som f.eks. tente lys, bør ikke plasseres på produktet.

EN

## OSTRZEŻENIE!

Nie otwierać pokrywy. W środku nie ma części nadających się do naprawy przez użytkownika. Prosimy pozostawić serwis dla wyszkolonego personelu.  
Nie umieszczać produktu w pobliżu źródła ciepła, np. grzejnika, lub w bezpośrednim świetle słonecznym, kurzu, czy mechanicznym wibracjom.  
Produkt ten nie może być ekspozowany na kąpienie lub chlapanie, a przedmioty wypełnione płynami, takie jak wazy, nie powinny być na nim umieszczane.  
Źródła otwartego ognia, takie jak np. świece, nie powinny być umieszczane na produkcie.

## ATENÇÃO!

Não abra a tampa. Não tente a reparação do instrumento por si. Dirija-se a pessoal qualificado  
Não aproxime a uma fonte de calor excessivo ou exponha o produto à luz solar, poeira, vibração ou choque  
Não mantenha o produto num local húmido ou perto líquidos como vasos, etc.  
Não aproxime o produto a fontes de fogo vivo, como velas

## VÝSTRAHA!

Neotvárajte kryt. Vo vnútri nie sú žiadne súčasti, ktoré sú opraviteľné užívateľom. S požiadavkou na servis sa obráťte na kvalifikované servisné stredisko.  
Nevystavujte produkt do blízkosti akéhokoľvek tepelného zdroja ako napr. radiátora, alebo do kontaktu so slnečným žiarením, nadmerným prašným prostredím, mechanickým vibráciám alebo šokom.  
Produkt nesmie prísť do kontaktu s vodou a žiadny objekt naplnený vodou, ako napr. váza, nesmie byť umiestnený na produkt.

## OPOZORILO!

Ne odpirajte pokrova. V notranjosti ni nobenih delov, ki jih uporabnik lahko sam popravlja. Popravilo prepustite usposobljenemu osobju  
Ne postavljajte izdelka na lokacijo v bližini vira toplote, kot je radiator, ali na območje, ki je izpostavljeno neposredni sončni svetlobi, pretiranem prahu, mehanskim tresljajem ali udarcem  
Izdelek ne sme biti izpostavljen kapljanju ali brizganju in nobeni predmeti, napolnjeni z vodo, kot so vaze, se ne smejo postaviti na izdelek  
Nobenega od virov odprtega ognja, kot so vžgane sveče, se ne sme postavljati na izdelek

## ¡ADVERTENCIA!

No abra la tapa. No intente reparar el aparato usted mismo. Llévelo a reparar por personal calificado.  
No coloque el aparato cerca de fuentes de calor excesivo o donde esté expuesto a luz solar directa, golpes, vibraciones o polvo.  
Evite lugares expuestos a humedad. No ponga objetos llenos de líquidos en la superficie de este aparato.  
No se deben colocar fuentes de llama desnuda, como velas encendidas, en la superficie de este aparato.

## VARNING!

Öppna ej locket. Inga användarvänliga delar inuti. För reparationer vänd er till kvalificerad servicepersonal  
Ställ ej produkten vid en värmekälla t.ex element, i direkt solljus, damm, elektronisk vibration eller shock.  
Produkten bör ej bli utsatt för droppande eller stänk och inga objekt fyllda med vätskor som t.ex vaser skall ställas på produkten.  
Ingen källa till öppna flammor som t.ex tända ljus bör placeras på produkten.

DE

FR

IT

NO

PL

PT

SE

SI

SK

ES

FI

EN

SE

DE

FR

IT

NO

PL

PT

SE

SI

SK

ES

FI

EN

SE

DE

FR

IT

NO

PL

PT

SE

SI

SK

ES

FI

EN

SE

DE

FR

IT

NO

PL

PT

SE

SI

SK

ES

FI

EN

SE

DE

FR

IT

NO

PL

PT

SE

SI

SK

ES

FI

EN

SE

DE

FR

IT

NO

PL

PT

SE

SI

SK

ES

FI

EN

SE

DE

FR

IT

NO

PL

PT

SE

SI

SK

ES

FI

EN

SE

DE

FR

IT

NO

PL

PT

SE

SI

SK

ES

FI

EN

SE

DE

FR

IT

NO

PL

PT

SE

SI

SK

ES

FI

EN

SE

DE

FR

IT

NO

PL

PT

SE

SI

SK

ES

FI

EN

SE

DE

FR

IT

NO

PL

PT

SE

SI

SK

ES

FI

EN

SE

DE

FR

IT

NO

PL

PT

SE

SI

SK

ES

FI

EN

SE

DE

FR

IT

NO

PL

PT

SE

SI

SK

ES

FI

EN

SE

DE

FR

IT

NO

PL

PT

SE

SI

SK

ES

FI

EN

SE

DE

FR

IT

NO

PL

PT

SE

SI

SK

ES

FI

EN

SE

DE

FR

IT

NO

PL

PT

SE

SI

SK

ES

FI

EN

SE

DE

FR

IT

NO

PL

PT

SE

SI

SK

ES

FI

EN

SE

DE

FR

IT

NO

PL

PT

SE

SI

SK

ES

FI

EN

SE

DE

FR

IT

NO

PL

PT

SE

SI

SK

ES

FI

EN

SE

DE

FR

IT

NO

PL

PT

SE

SI

SK

ES

FI

EN

SE

DE

FR

IT

---

# INTRODUCTION

Thank you for purchasing the SubZero BASE-2 Home Recording Bundle.

To help you get the most out of your new device, please read this manual carefully.

## INCLUDED IN THIS BUNDLE

- SubZero SZ-AI2 2x2 USB Audio Interface
- SubZero SZC-300 Condenser Microphone
- SubZero SZ-MH200 Monitoring Headphones
- XLR Cable, 6m
- Microphone Pouch
- Screw-on Mic Clip
- Bitwig 8-Track

## MAIN FEATURES

The SubZero BASE-2 Home Recording Studio Bundle is the ultimate studio solution.

Powered by plug-and-play USB 2.0 for an easy setup, the SubZero SZ-AI2 audio interface is simple to use with your favourite software and instantly turn anywhere into a recording studio.

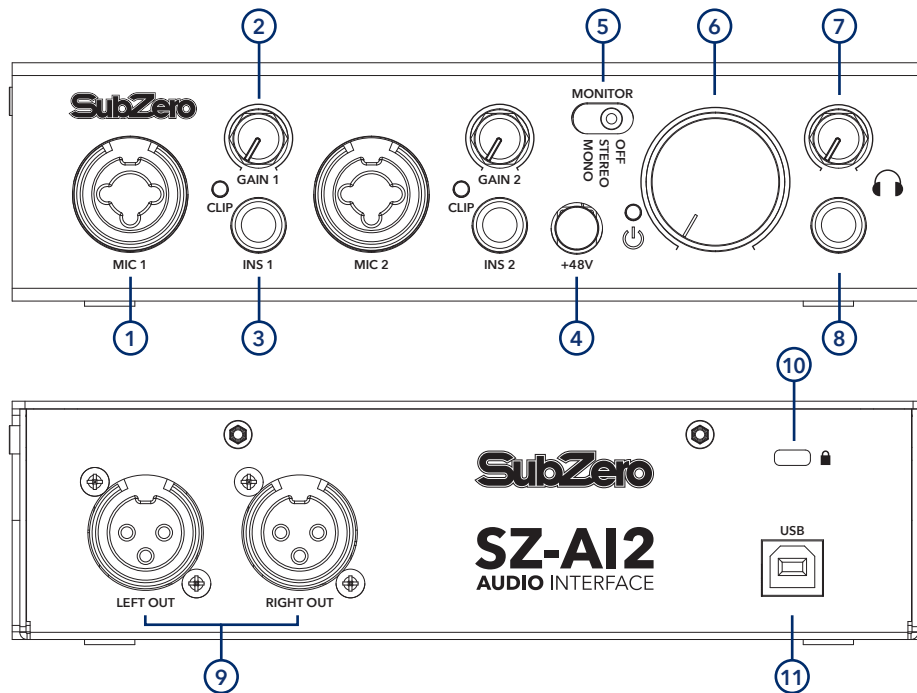
Thanks to the +48v phantom power integrated to the interface, you will be able to connect the included SubZero SZC-300 Condenser Microphone to record with high quality and efficiency, making it ideal for broadcasting, podcasting, live performances and home studio recording.

Featuring two independent input channels, each strip includes a low-noise preamp, which you can switch between high and low impedance to optimise for your chosen sound source being a microphone or an instrument.

You can switch the headphone output between stereo, mono, or off -useful options when mixing. There's also an independent volume control for headphones.

The interface includes a laptop lock input on the rear of the unit, so you can secure your interface with an anti-theft system.

# PARTS AND FUNCTIONS



## 1. MICROPHONE/INSTRUMENT LINE INPUT

Combination XLR / TRS input, connect microphone or instrument to this input.

## 2. GAIN KNOB

Controls the input volume from your microphone or instrument, the clip light indicates if you have clipped the signal.

## 3. INS BUTTON

Switching between low impedance for microphone input or high impedance for guitar / instrument input.

## 4. +48V BUTTON

Enables +48v phantom power for condenser microphones.

## 5. MONITOR SWITCH

Selects the type of audio received when monitoring using the headphone output of the interface, stereo, mono or off.

## 6. MASTER KNOB

Allow easy control of the master output volume.

## 7. HEADPHONE GAIN KNOB

Controls the headphone volume output.

## 8. HEADPHONE OUTPUT

1/4" TRS Output to connect with your headphones.

## 9. LEFT OUT / RIGHT OUT

Balanced XLR Outputs to connect to studio monitors, amplifier or external mixing desk.

## 10. LOCK CONNECTOR

Connect a laptop lock connector to prevent the unit from being stolen

## 11. USB CONNECTION PORT

Connects your interface to your computer with supplied USB Cable.

---

# INSTALLATION

Simply connect to your SubZero SZ-A12 2x2 USB Audio Interface via an available USB 2.0 port. There is no need for external power as this unit draws its power from the USB port. After the connection of the interface, the operating system automatically detects it as a new hardware device. Modern operating systems like Windows Vista/7/8/10 or Mac OS X usually detect the hardware directly and installs the correct USB audio drivers automatically.

You can use the SZ-A12 now in typical consumer audio applications that do not need special professional ASIO driver support. For example, this could include Windows programs used for DVD playback or more simple DJ applications that don't require ASIO.

The SubZero SZ-A12 2 Channel Audio Interface is a high-resolution device capable of advanced processing of audio content. It is built to have low-CPU resource needs, but the unit will perform better on a system with higher specification. For more information on this, see minimum system requirements below.

Connect the SubZero SZC-300 Condenser Microphone to the SubZero SZ-A12 2x2 USB Audio Interface via the included XLR cable to the Mic 1 or Mic 2 input. Please ensure the +48V is enabled as the SZC-300 condenser microphone requires phantom power to function correctly.

We recommend switching between low impedance for microphones or high impedance for guitar/ instruments thanks to the INS 1 or INS 2 knobs.

## MINIMUM SYSTEM REQUIREMENTS

PC - Windows Vista / 7 / 8 / 8.1 or 10 (32 or 64 bit) with 1 available USB 2.0 port.

MAC - Mac OSX 10.7 or Higher with 1 available USB 2.0 port

## DRIVER AND SOFTWARE INSTALLATION (WINDOWS)

This text explains how to install the SubZero SZ-A12 under Windows 10. If you use Windows Vista, Windows 7, Windows 8 or Windows 8.1, the steps are basically the same. Make sure to install the driver before connecting the interface. You can find the drivers on the Gear4music website.

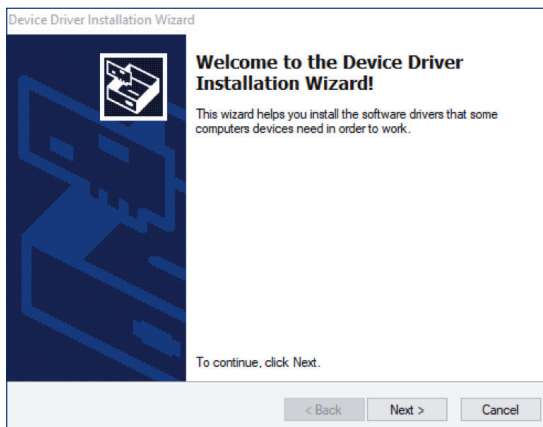
---

To start the installation, launch the setup program, which is an .exe file that is inside a recent driver download from the Gear4music website. The link is below:

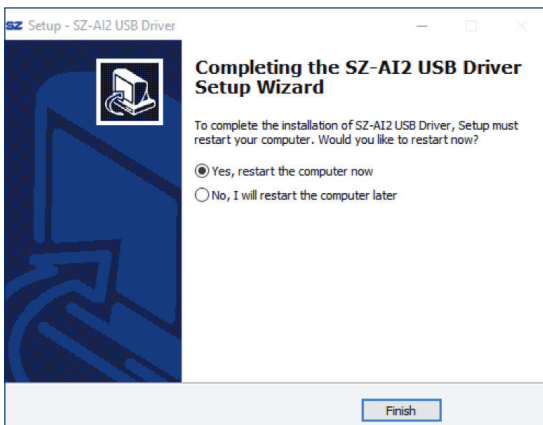
<https://www.gear4music.com/driver-downloads>

Alternatively, you can find the driver in the Windows folder of the included Installation DVD, by double clicking on it. Typically the filename is something like SZ A12 USB vX.YY\_setup.exe where X.YY is the version number of the driver. When launching the installer, Windows might display a security message. Make sure to allow the installation. For information about the EV certificate, contact Gear4music Customer Service on the contact details at the end of the manual. After that, the following dialog on the left will appear.

Click Next.



Now click Install. Files are now being copied. You will be prompted with a Windows Security message. Confirm it by clicking Install. After a while the installation then will be completed, and the following dialog will appear:



Once you see the window on the above, click Finish. We strongly suggest to select Yes, restart the computer now and then click Finish. You can connect the interface to your computer anytime if not done yet. Windows will automatically setup the system so you can use the device. Once the system starts again and you are logged in with the hardware connected, you will see that the interface control panel is now automatically being loaded by looking at the SZ icon in the taskbar notification area. If you can see it, the driver installation has been completed successfully.

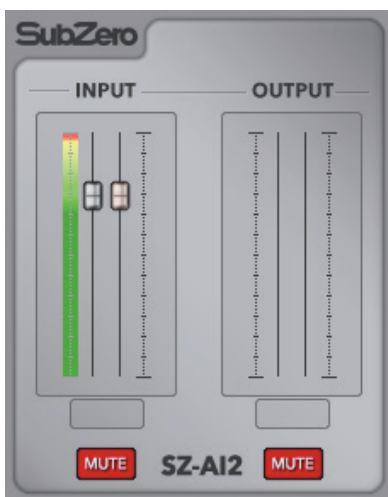
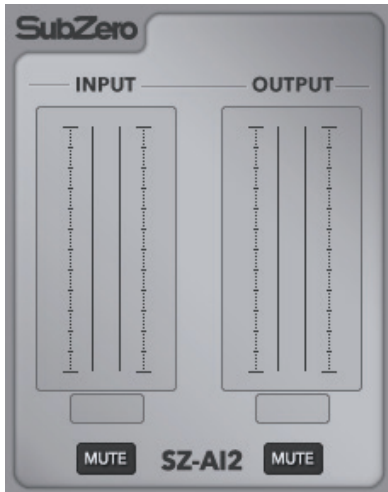
## WINDOWS AUDIO SETTINGS

In the Windows Control Panel (under Hardware and Sound > Sound), you can select the default playback device that is used by all audio applications that don't have their own preferences, you can select the SZ-A12 and make it your default audio playback device. However, most DAW recording software will allow you to set up an additional output, allowing you to just use the interface for sending sound to active studio monitors whilst recording, for example.

---

## CONTROL PANEL UNDER WINDOWS

This is the SubZero control panel, where you can edit parameters of the interface. The controls are simple and intuitive to use, and are as follows.



The control panel gives an indication when the audio interface is active and ready to use. You can see this when the mute buttons turn from grey colour to dark red colour, and when the level adjustable audio level indicators appear. If these two parts are not showing, there is a connection issue, meaning the audio interface is not active.

When active, you can edit the input and output levels of the audio from this screen, with an interactive level indicator showing you the level in real time. You can also mute inputs and outputs using the MUTE button at the bottom of the panel.

Pre-sets can be saved and loaded. Simply click File > Pre-set > Save/Load to carry out these tasks. This allows you to save your level settings so that they are the same each time you use the audio interface.

Sample rates, latency and buffer number can all be edited in the config menu.

## CONTROL PANEL UNDER MAC

Mac OS X already provides support for class compliant USB audio devices such as the SZ-AI2. This means that no software or driver needs to be installed to use this interface under Mac OS X. Simply connect the unit with the supplied USB cable to your Mac and you can start using it. To make the usage simpler, a control panel application is included that can be installed from the included DVD (Mac OS X folder) or downloaded from the Gear4music website. To install it, open the .dmg file and then you can drag the control panel icon into your application folder.

Controlling some of the basic interface options under Mac OS X can also be done via the Audio MIDI Setup utility from Mac OS X.



---

# BITWIG STUDIO 8-TRACK

Your Base-2 pack comes with a free edition of Bitwig Studio 8-Track, a great way to produce, record, and perform like a pro.

Bitwig Studio 8-Track is a great way to produce, record, and perform like a pro. As with every Bitwig product, 8-Track was designed around a lighting-fast workflow and a substantial library of devices and sounds. Connect your controller, record yourself, produce an arrangement, design new sounds, or just jam. Modern music production, ready to go.

## FEATURES:

- Full music-production environment for Windows, macOS, and Linux
- Perform interactively with clips
- 2,000 sounds and more than 60 instrument/FX devices included
- Plug-and-play MIDI controller support
- Multiple sync options, including Ableton Link
- Panel-based interface for professional audio/MIDI editing
- Multitouch support (for Windows and Linux)
- Modulators that attach to any device or plug-in
- Native VST 32-/64-bit bridge and crash protection
- Flexible routing: send any signal anywhere
- MPE support, for expressive parameter control
- Nested devices, allowing complex structures within simple presets

## INSTALLATION:

Firstly, register an account on the Bitwig website. This can be done by following the below link:

[www.bitwig.com/register](http://www.bitwig.com/register)

Follow through the registration process as prompted on the website.

Once this has been completed, you are ready to download Bitwig 8-Track. Follow the link below to the download webpage, which gives you the download options for Windows, Mac or Linux operating systems. Please note, the download of Bitwig 8-Track is the same as the one for Bitwig Studio.

[www.bitwig.com/download](http://www.bitwig.com/download).

Once you have downloaded the software, follow the on-screen prompts for installing to your computer.

You must also register the software to your account. You will require the unique serial number, which is located on the download card, inside the box. You can do this either online, or when you open Bitwig for the first time.

Please note, you can install Bitwig 8-Track on to two operating systems.

## MINIMUM OPERATING REQUIREMENTS:

All details on system requirements can be found on the below link:

<https://www.bitwig.com/en/support/faq.html>

If you have any further questions about how to use this software, please consult the FAQ page at <https://www.bitwig.com/en/support/faq.html> or consult the manual included in your download.

Bitwig is a registered trademark of Bitwig GmbH, registered in the European Union and other countries.

---

# SPECIFICATIONS

## SUBZERO SZ-AI2 2X2 USB AUDIO INTERFACE

### INPUTS

Preamp..... 1 per channel

Type ..... 2x XLR/TRS  
Combination Inputs

Frequency Response ..... 20Hz-20kHz

Impedence ..... 10kOhm line input,  
3.3kOhm microphone  
input, 500kOhm Hi-Z  
input

Max Input Level ..... +20dBu line input,  
+4dBu microphone  
input, +12dBu Hi-Z  
input

Phantom Power..... +48v Switchable

### OUTPUTS

Type 2 x XLR

Frequency Response ..... 20Hz - 20kHz

Max Output Level..... +4dBu

### AUDIO

Max 24-bit / 96kHz

ADC Dynamic Range..... 102dBA@48kHz

DAC Dynamic Range..... 108dBA@48kHz

### POWER REQUIREMENTS

- USB 2.0, Type B
- Bus-Powered Via Computer

## SYSTEM REQUIREMENTS AND SUPPORTING SOFTWARE:

### PC

- Windows/Vista / 7 / 8 / 8.1 or 10 (32 or 64 bit)
- Driver May be Required - Included / Available as a download from Gear4music

### MAC

- OSX 10.7 or Higher
- No Driver Required (Optional control panel software available as a download from Gear4music)



If you have any more questions about this product, please do not hesitate to contact the Gear4music Customer Service Team on: **+44 (0) 330 365 4444** or **[info@gear4music.com](mailto:info@gear4music.com)**