



Yamaha takes a new approach to all-weather speakers.

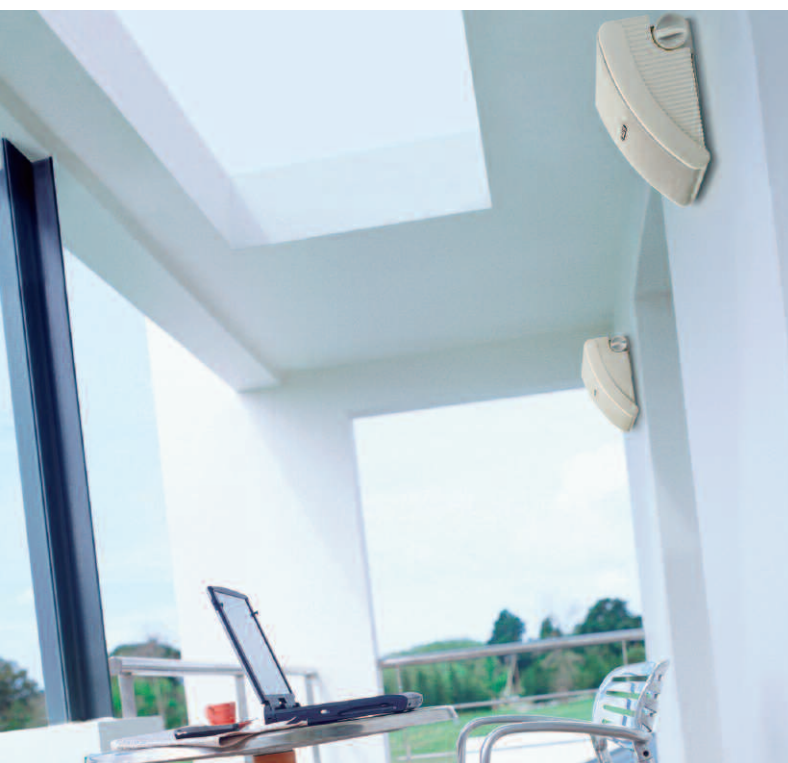
Not just high durability. High durability AND high quality sound, AND a unique design.



Powered by music

You can put them anywhere... and they will always look and sound great!

These three speaker pairs are designed first and foremost for good sound quality, because at Yamaha, the music always comes first. Their two-way acoustic design features a new waterproof woofer for accurate mid and low frequency response, and a fluid-cooled, coated soft dome tweeter for clear highs. Time-aligned woofer and tweeter placement ensures excellent sound imaging. Their all-weather durability comes from a plastic cabinet and special processing for drip, water, UV and temperature resistance. They can be installed almost anywhere, in any position, and come supplied with adjustable mounting brackets and even rubber feet* for use on a shelf or table. * Rubber feet is for NS-AW392 and NS-AW592.



High Quality and Durability

Excellent Audio Performance

Yamaha drew on its long experience as a manufacturer of top quality HiFi speaker systems to develop these three all-weather models. We were able to make them extremely durable while still maintaining audio performance up to Yamaha standards. The woofer uses a highly responsive cone and a fluid-cooled soft dome tweeter, both specially processed for water resistance. The internal structure has been carefully designed for optimal time alignment

between the two units, providing proper sound imaging. A waveguide and front baffle ensure good sound dispersion characteristics. Tonal clarity in all frequency ranges is excellent, with very low distortion.



New waterproof woofer and soft dome tweeter

All-Weather Construction

With a plastic cabinet and specially processed woofer and tweeter, these speakers will perform reliably when mounted outdoors. They are water resistant, and are not affected by sunlight (UV rays) or high or low temperatures. The brackets have a powder coating for reliable waterproofing.





NS-AW392



NS-AW592



NS-AW992



The NS-AW392, NS-AW592 and NS-AW992 are offered with black and white finish.



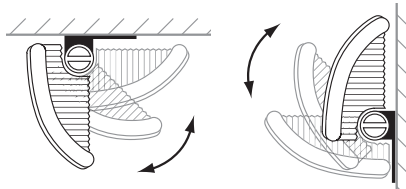
Professional Design

Versatile Applications

Designed primarily for use as outdoor speakers, they can add to the fun of backyard parties, supply background music on patios and decks or be mounted in or near the garage. They can be used indoors or outdoors at public facilities, as well as inside shops. You can choose among three woofer/cabinet variations to best suit your intended application.

Various Installation Possibilities

The bracket that comes with each speaker can be adjusted in multiple ways, providing a wide variety of installation possibilities. On the wall, on the ceiling, on the floor, with either end facing up, or even



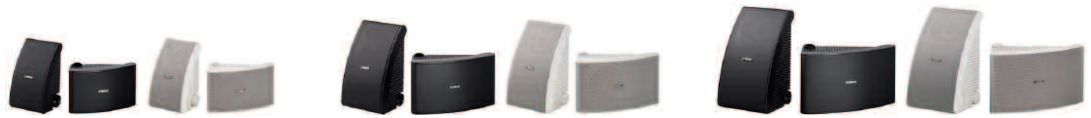
horizontally, with a 90° adjustment range. Virtually any way the customer wants to install them is possible.

Unique Cosmetic Design

The NS-AW392, NS-AW592 and NS-AW992 have a unique, appealing design that sets them apart from other outdoor speakers, most of which are box-shaped. Even though they stand out on their own, once you install them you'll find they nicely match the exterior or interior decor.

All-Weather Speakers

NS-AW392/NS-AW592/NS-AW992



Main Specifications	NS-AW392	NS-AW592	NS-AW992
Type	2-way acoustic suspension	2-way acoustic suspension	2-way acoustic suspension
Woofer	5-1/4" (13cm) waterproof cone	6-1/2" (16cm) waterproof cone	8" (20cm) waterproof cone
Tweeter	3/4" (2cm) fluid-cooled, coated soft dome	1" (2.5cm) fluid-cooled, coated soft dome	1" (2.5cm) fluid-cooled, coated soft dome
Frequency Response	60 Hz–25 kHz	55 Hz–20 kHz	50 Hz–20 kHz
Nominal Input Power	40 W	50 W	60 W
Maximum Input Power	120 W	150 W	180 W
Sensitivity	86 dB/2.83 V/1 m	88 dB/2.83 V/1 m	90 dB/2.83 V/1 m
Crossover Frequencies	6 kHz	5 kHz	6 kHz
Waterproof Characteristics	IPx3	IPx3	IPx3
Cabinet	HIPS	HIPS	HIPS
Grille	Powder coated aluminum	Powder coated aluminum	Powder coated aluminum
Speaker Terminals	Waterproof, screw-type	Waterproof, screw-type	Waterproof, screw-type
Impedance	6 ohms	6 ohms	6 ohms
Dimensions (W x H x D)	6-3/4" x 10-3/4" x 5-3/8"; 170 x 273 x 136 mm	8-1/8" x 13-3/8" x 6-3/4"; 206 x 341 x 170 mm	9-1/8" x 15-1/4" x 8-1/4"; 233 x 388 x 208 mm
Weight	4 lbs.; 1.8 kg/unit	5.3 lbs.; 2.4 kg/unit	8.2 lbs.; 3.7 kg/unit

• Product designs and specifications are subject to change without notice.

For details please contact:

Visit us at our website:
<http://www.global.yamaha.com>



CREATING 'KANDO' TOGETHER

YAMAHA CORPORATION
 P.O. Box 1, Hamamatsu, Japan



P10021770

WEN 10910 T