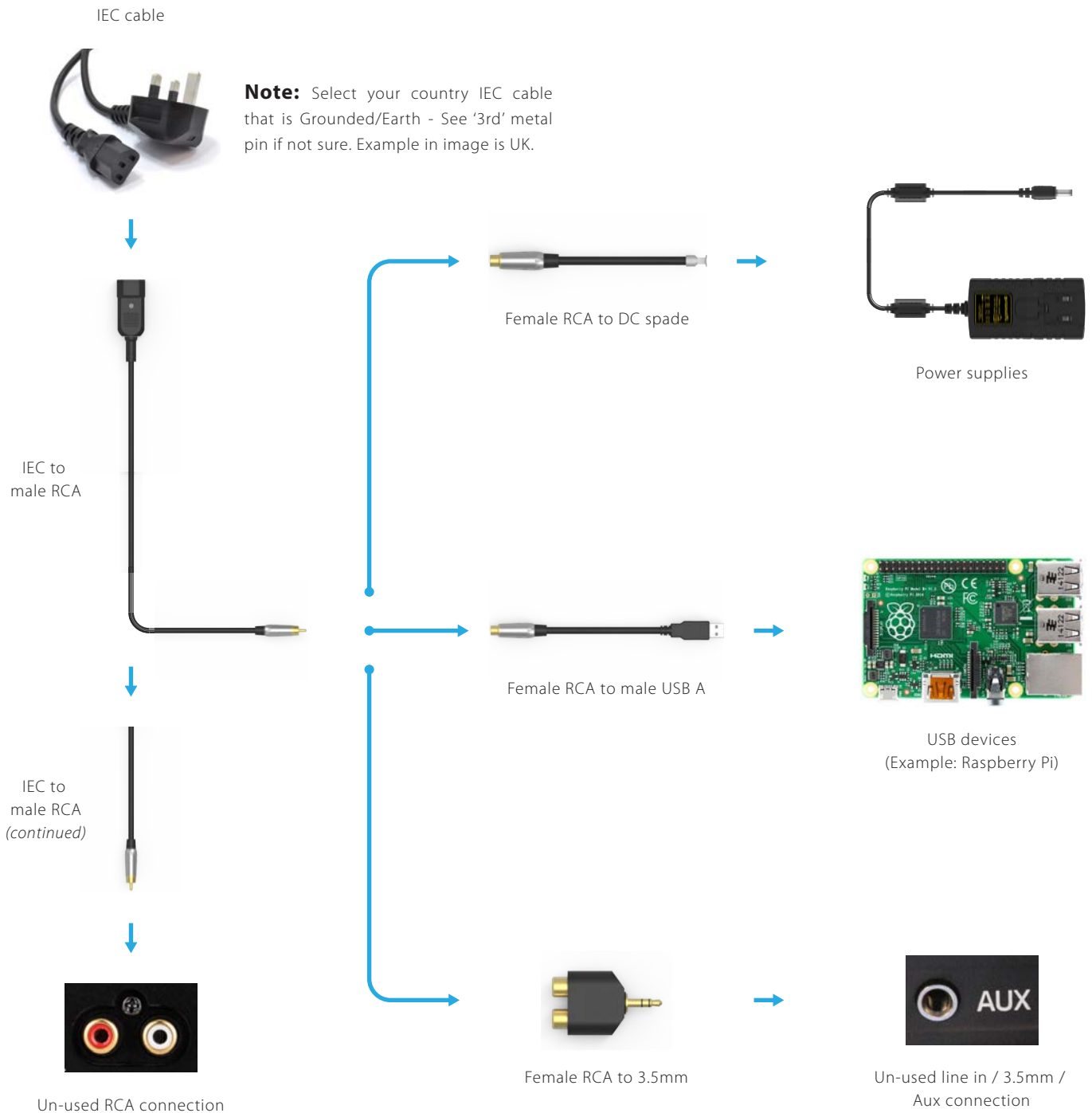


## GroundHog: Implementing Ground/Earth link

Hum, buzz, hiss noises eliminated by implementing an Ground/Earth link to the system so you can better enjoy the tunes!



### Item List

- 1x GroundHog (IEC to male RCA, female RCA to DC spade, female RCA to male USB A, female RCA to male 3.5mm)

### How it works:

The GroundHog implements an Ground/Earth link through the set of cables which adapts to your system. Select the appropriate placement and choose the correct cable.