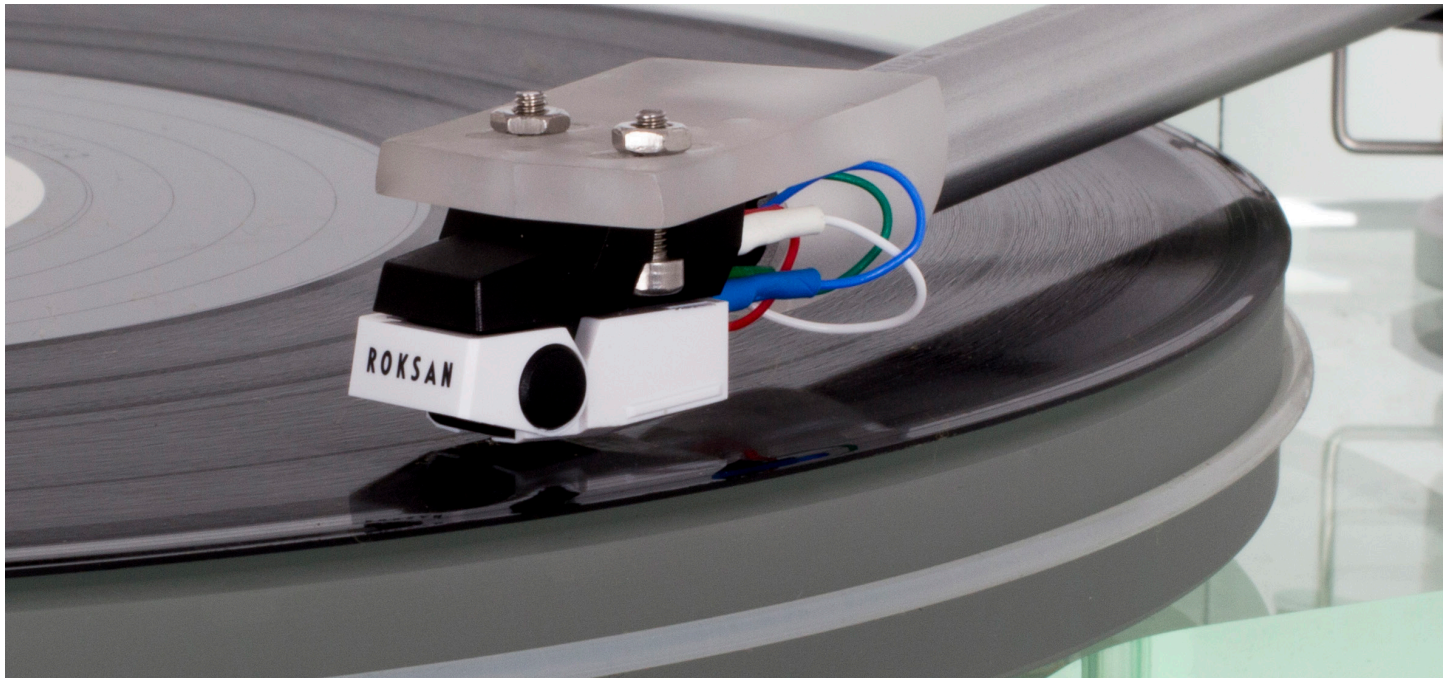


Corus2 Turntable Cartridge

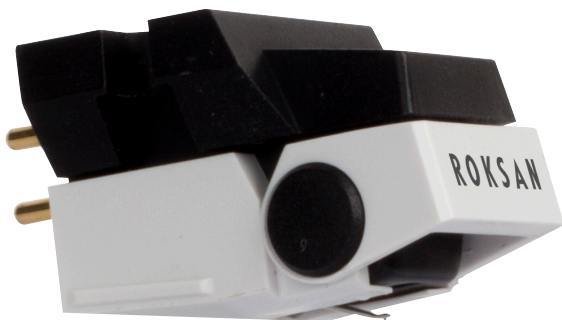
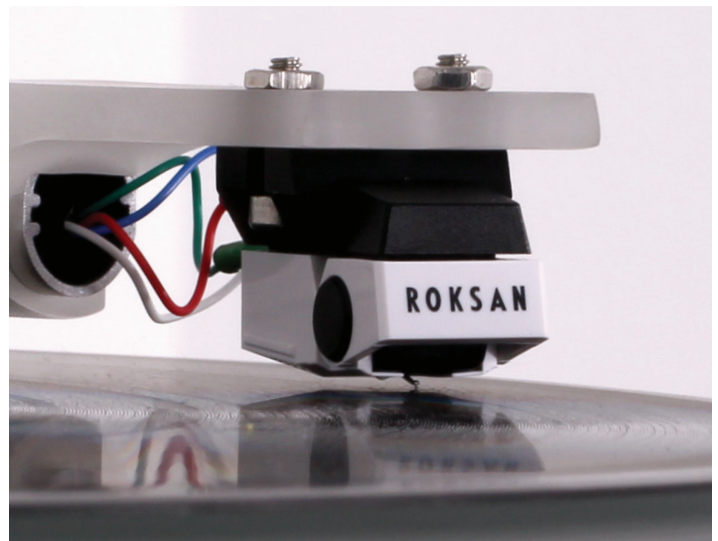


Next Generation Corus

The revered Corus cartridge is now in its second generation, introducing ground-breaking design changes and improvements throughout. It's been developed to provide a wider appeal to audiophiles, whilst elevating performance to a new level.

The design has changed significantly delivering the same kind of performance expected from a more expensive cartridge.

The Corus2 can be combined with the NIMA tonearm on our Radius 7 and Xerxes 20 Plus turntables to complete a high performance record playing source.



Improved Technology

An all new 'VM' magnet arrangement using one small magnet for each channel rather than a larger heavier single magnet.

The magnets are separated by a shielding plate to reduce crosstalk and increase channel separation over its operating band.

Inclusion of a speciality selected dampening compound and PCOCC internal wiring provide an all round superior performance.

The body is aluminium for low resonance and electrical shielding. A nude Shibata fine line stylus on a tapered aluminium tube ensures excellent detail retrieval and tracking ability.

These design features deliver a dynamic, transparent and musical performance.

Mechanical and Visual Design

A new visual identity with a 'less is more' approach has been adopted right through the design process to ensure the best possible component quality selection.

The black aluminum cartridge body and white stylus assembly provides an exclusive look to the product with an integral fold down stylus guard for convenience and peace of mind.



Key Features

New Moving Magnet

With twin magnets in VM arrangement for improved channel separation.

Shibata Stylus Profile

Incredible detail retrieval and projection across its frequency range.

Rigid Aluminum Body

Low resonance and high shielding.

Stylus Guard

Integral fold-down stylus guard for protection and piece of mind.

Technical Specifications

Type	Frequency response	Output voltage	Channel separation
VM dual moving magnet	20 to 27,000 Hz	3.5mV (1 kHz, 5 cm/sec.)	25 dB (1 kHz)
Output balance	Tracking force	Coil impedance	DC resistance
<1.5 dB (1 kHz)	1.8 to 2.2 g (2.0 g standard)	3.2 k ohms (1 kHz)	800 ohms
Recommended load impedance	Recommended load capacitance	Coil inductance	Static compliance
47 k ohms	100 to 200 pF	490 mH (1 kHz)	40 × 10 ⁻⁶ cm/dyne
Dynamic compliance	Stylus	Stylus curvature radius	Cartridge body
10 × 10 ⁻⁶ cm/dyne (100 Hz)	Nude Shibata	2.7 × 0.26 mil	Aluminium
Cantilever	Vertical tracking angle	Dimensions (H × W × D)	Weight
Aluminium tapered pipe	23°	17.3 × 17.0 × 28.2 mm 11/16 × 11/16 × 1 1/8"	8.0 g

Images (to scale)



Front (Guard Open)



Front (Guard Closed)



Back (Guard Closed)



Bottom (Guard Closed)



Side (Guard Open)



Scan to watch our
Corus2 Installation Video

Roksan Audio, 24 Brook Road, Rayleigh, Essex, SS6 7XJ, UK
+44 (0)1268 740 580 | info@roksan.com
roksan.com