



# PRODUCT GUIDE

AUDIO ELECTRONICS | TURNTABLES



## About Roksan

---

For over 30 years, our mission has been to inspire our customers with world-class audio products.

Born in 1985, Roksan found global recognition with the Xerxes turntable. Since then, our passion for developing award-winning audio products has flourished, ranging from amplifiers to CD players.

With British design and manufacture, Roksan ensures outstanding build quality and endurance, containing groundbreaking technology and audiophile grade components that will take your audio experience to the next level.

Our consistent attention to detail and uncompromising quality is infused in everything we do.

## Contents

---

<b>3</b>	<b>About Roksan</b>	<b>24</b>	<b>Turntables and Vinyl</b>
4 - 5	Design and Performance	26 - 27	Turntables
		28 - 29	Tonearms and cartridges
		30 - 33	Caspian Vinyl Electronics
<b>6</b>	<b>Audio Electronics</b>	<b>34</b>	<b>Glossary</b>
8 - 13	K3 series		
14 - 17	blak series		
18 - 22	Caspian M2 series		





## Design and Performance

---

Roksan has earned an enviable reputation for offering a consistently peerless performance and build quality for over three decades.

From the very first product - the Xerxes turntable - exhaustive research and development goes into every Roksan product with the aim of providing the most involving and exciting listening experience possible.

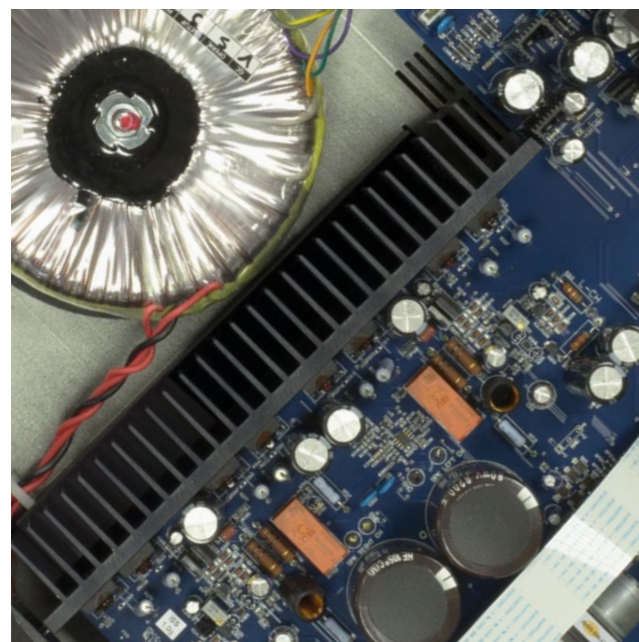
This is achieved by our meticulous attention to detail in mechanical, electrical and aesthetic design.

Specific features such as unique isolation and damping methods, advanced electronic design, careful selection of top grade audiophile grade components, dual mono amplification topology and comprehensive listening tests all combine to deliver Roksan's renowned sonic signature.

With the incorporation of high quality materials and advanced manufacturing methods, product build quality is beyond reproach.

In addition, we are constantly searching for ways in which we can deliver genuine high-end audio performance to a wide spectrum of people.

For example, we developed our own K-Link wireless streaming system and were one of the very first industry adopters of aptX Bluetooth streaming to offer the best possible sound in a rapidly expanding and changing market.





# Audio Electronics

---

Set your music free, no matter how you like to play it, with our range of audio electronics. Featuring the best audio components, technology and design, our range of amplifiers, CD players and DACs deliver refined audio with convenient connectivity.

Playing your favourite albums couldn't be simpler, whether it's your favourite CD or vinyl with industry standard inputs and outputs available across the entire product range.

Make the most of your digital collection or streaming subscription with USB, aptX Bluetooth integration and our very own K-Link technology, to wirelessly stream CD quality audio from your device on selected models.





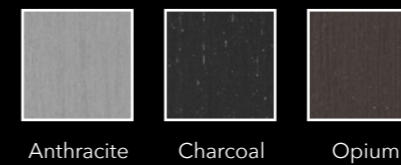
## K3 series

Conceived to offer a competitive and complete audiophile solution for the current audio market, the K3 series features definitive captivating audio quality and smart streaming solutions.

Selective use of high quality electronic components and a fresh approach to electronic design ensures the very best sound reproduction.

Combining visual elegance with exciting audiophile performance, the K3 series offers the ultimate in musical involvement, audio engineering and user flexibility.

### Available finishes







## K3 Integrated Amplifier

The K3 Integrated Amplifier features rich power and bass drive, paired with elegant design and the inclusion of aptX Bluetooth to become the amplifier for today's discerning audiophile.



### Key Features

- Moving magnet phono input
- Five additional Line inputs for other sources
- Directly mains-powered power amp section
- Switchable bypass input
- aptX Bluetooth
- 1/4" headphone jack
- Remote control included
- Symmetrical amplifier layout

### Specifications

<b>Inputs</b>	5 x RCA, MM phono, aptX Bluetooth, Bypass	<b>Gain</b>	37.5dB (75x)
<b>Input Impedance</b>	47 kohms	<b>Harmonic Distortion</b>	<0.005% (1kHz - 14W @ 8 ohms)
<b>Line Input Sensitivity</b>	440mV @ 140W / 8 ohms	<b>Power Consumption</b>	Standby: <25W Full Power 2-CH: 8 ohms = <330W, 4 ohms = <550W
<b>Outputs</b>	Speaker (L & R), preamplifier, 1/4" headphone	<b>Signal-to-Noise Ratio</b>	>90dB (Line input)
<b>Power Output (Per Channel)</b>	> 140W (8 ohms) / > 220W (4 ohms)	<b>Dimensions (WxHxD)</b>	432 x 102 x 380mm
<b>Power Supply</b>	550VA Toroidal transformer, 5 regulated supply rails	<b>Weight</b>	14kg
<b>Frequency Response</b>	<3Hz - >100kHz (-3dB)		



## K3 Power Amplifier

The K3 Power Amplifier, is the natural partner for the K3 Integrated Amplifier and is the perfect way to upgrade your K3 system to offer more headroom, grip and control.



### Key Features

- Symmetrical amplifier layout
- Optimised power supply layout, distribution and decoupling
- Directly powered power amp section
- 0.5W standby operation with auto detect and a 30 minute timer

### Specifications

<b>Inputs</b>	RCA, XLR	<b>Frequency Response</b>	<3Hz - >100kHz (-3dB)
<b>Input Impedance</b>	23 kohms	<b>Gain</b>	31.6 dB
<b>Input Sensitivity</b>	(115W) - 900 mV	<b>Harmonic Distortion</b>	<0.003% 1kHz - 8 ohms
<b>Outputs</b>	Speaker (L & R)	<b>Power Consumption</b>	Warm up mode <25W, Full Power <800W
<b>Power Output (Per Channel)</b>	> 140W (8 ohms) / > 220W (4 ohms)	<b>Signal-to-Noise Ratio</b>	100dB (ref. 900 mV)
<b>Power Supply</b>	500VA Ultra low noise toroidal transformer	<b>Dimensions (WxHxD)</b>	432 x 105 x 380mm
<b>Damping Factor</b>	>110 (8 ohms)	<b>Weight</b>	14kg



## K3 CD Player

The K3 CD Player uses high-calibre components to produce a full soundstage with increased detail retrieval and smoother 'analogue' sound with digital inputs for added functionality.



### Key Features

- High quality CD playback with digital to analogue conversion
- Digital XLR, RCA and Optical outputs
- Analogue gold plated RCA output
- Switchable Optical and RCA digital inputs
- Track information display
- Shuffle play

### Specifications

<b>OS</b>	CD Digital Audio System (CD, CD-R, CD-RW)	<b>D/A Conversion</b>	PCM1730E advance segment
<b>Inputs</b>	RCA (75 ohms), Optical	<b>Resolution/Sampling</b>	24 bits / 192 kHz
<b>Outputs</b>	RCA (75 ohms), XLR (110 ohms), Optical	<b>Oscillation</b>	3rd Overtone oscillation
<b>Output Voltage</b>	2.2V rms	<b>Crystal</b>	Super precision, custom made
<b>Frequency Response</b>	20Hz - 20kHz (± 0.2dB)	<b>Jitter</b>	< 150 psec
<b>Harmonic Distortion</b>	< 0.002% @ 0dB, 1kHz, < 0.006% @ -30dB, 1kHz, < 0.002% @ 0dB, 20Hz, < 0.008% @ 0dB, 20kHz	<b>Idle Pattern</b>	< -107dB L&R
<b>Signal-to-Noise Ratio</b>	< 96dB L&R	<b>Stop-Band Rejection</b>	< -98 dB
<b>Wow &amp; Flutter</b>	Quartz Precision	<b>Power Supply</b>	Toroidal transformer, 7 fully regulated power rails
<b>Channel Separation</b>	100dB @ 1kHz / 80dB @ 20kHz	<b>Dimensions (WxHxD)</b>	432 x 105 x 380mm
		<b>Weight</b>	9kg



## K3 DAC

The K3 DAC has been designed as a hub for all digital sources with a wide range of inputs that will decode both high resolution PCM and DSD information.

Featuring our K-Link wireless technology for CD quality streaming capability from your device.



### Key Features

- Texas Instruments DSD1794A DAC chip
- PCM resolution up to 24-bit / 192kHz
- DSD information up to DSD 128
- XLR, optical, RCA and USB digital inputs
- Roksan K-Link wireless transmitter technology (supplied with K-Link digital USB dongle)

### Specifications

<b>Digital Inputs</b>	XLR, RCA SPFFIF, Optical, USB type-B (Front and rear panel), K-Link wireless transmitter receiver (via the Roksan K-Link transmitter)
<b>Outputs</b>	2 x RCA (phono), XLR (balanced)
<b>Dimensions (WxHxD)</b>	432 x 105 x 380mm
<b>Weight</b>	7kg



## blak series

---

A fulfilling listening experience, the blak series employs all the inherent musicality that has consistently been Roksan's trademark throughout our history.

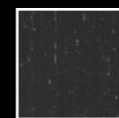
With its substantial build and striking visual design, coupled with an astounding audiophile performance of both power and delicacy, the blak series offers the ultimate in musical involvement, audio engineering and user flexibility.

To dedicated audiophiles, devoted music lovers and those who simply demand the best, blak offers a complete sonic solution.

### Available finishes



Anthracite



Charcoal



Opium





## blak Integrated Amplifier

For both usability and flexibility look no further than the blak Integrated Amplifier.

This innovative design retains all of the features, specifications and sonic performance of a 'standard' Integrated Amplifier, but has the addition of a high quality internal DAC accessed via a USB port.



### Key Features

- MM phono, XLR and 3 x RCA inputs
- aptX Bluetooth
- USB type-B port
- 1/4" Headphone jack
- Internal DAC circuit
- Dimmable display

### Specifications

<b>Inputs</b>	3 x RCA, XLR, USB type-B, MM phono, aptX Bluetooth	<b>Power Output (Per Channel)</b>	1kHz, 8 ohms > 150W 1kHz, 4 ohms > 230W
<b>Input Impedance</b>	24 kohms XLR, 40 kohms RCA	<b>Frequency Response</b>	-3dB, 12W, 8 ohms from < 20Hz to >80kHz
<b>Outputs</b>	Speaker (L & R), 1/4" headphone	<b>Channel Balance</b>	1kHz, 8 ohms, 12W > 0.3dB
<b>Moving Magnet Input Gain</b>	76.75dB@1kHz, input impedance 47 kohms, 150pF	<b>Cross Talk</b>	1kHz, 8 ohms < -104dB
<b>Gain</b>	1kHz, 8 ohms 36,75dB	<b>Signal-to-Noise Ratio</b>	1kHz, 8 ohms, 1W more than 76dB
<b>THD</b>	1W, 8 ohms, 5kHz < 0.02% / 12W, 8 ohm, 5kHz < .035%		



## blak CD Player

The blak CD Player utilises some of the finest electrical components available and a superior CD drive.

Micro-detail and depth of soundstage are married with an exceptional warmth and musicality that communicates directly with the listener.



### Key Features

- XLR, Optical and RCA digital outputs
- XLR and RCA analogue outputs
- Audiophile standard DAC chipset for optimum detail retrieval
- Totally isolated disc mechanism to eliminate vibration
- Dimmable track information display

### Specifications

<b>Operating System</b>	CD Digital Audio System (CD, CD-R, CD-RW)	<b>Linearity</b>	1kHz >89dB
<b>Digital Outputs</b>	Optical, RCA, XLR	<b>Jitter</b>	less than 135ps
<b>Analogue Outputs</b>	Stereo RCA, Stereo XLR	<b>Signal-to-Noise Ratio</b>	> 108dB
<b>Peak Output</b>	4.4V	<b>Stop Band Rejection</b>	>100dB
<b>THD</b>	1kHz, 0dB less than 0.001%		



## Caspian M2 series

The multi-award winning Caspian series is admired the world over for both its power and musically enchanting performance.

Featuring audiophile standard components and superlative build quality in a slim elegant housing, it offers the ultimate in enjoyment and involvement for any dedicated music lover.

### Available finishes



Silver



Black





## Caspian M2 Integrated Amplifier

The Caspian M2 Integrated Amplifier's independent power supplies, combined with fully symmetrical complimentary circuit design ensure the amplifier uncovers even the most delicate detail and presents it with total musical communication and emotional impact.



### Key Features

- On-board output protection circuit
- 5 x RCA inputs plus tape input and output
- First input switchable to balanced XLR
- Independent preamplifier stage power supply
- Thermally controlled heat-sink cooling
- Motorised volume control with LED indicator
- -20dB mute function
- 2 preamplifier outputs
- Oversized high quality toroidal transformer

### Specifications

<b>Inputs</b>	5 x RCA (CD Input Switchable to gold-plated XLR)	<b>Frequency Response</b>	-3dB, <1Hz - 90kHz
<b>Input Impedance</b>	47 ohms	<b>Gain</b>	40dB Overall
<b>Line Input Sensitivity</b>	Line 240mV	<b>Harmonic Distortion</b>	0.002% 1kHz, 0.015% 20kHz 10W - 8 ohms 0.0025% 1kHz, 0.03% 20kHz 50W - 8 ohms
<b>Outputs</b>	Speaker (L&R), Gold-plated RCA Preamplifier, Gold-plated RCA tape	<b>Power Consumption</b>	Standby: <25W / Full Power 2-CH: 8 ohms = <330W, 4 ohms = <550W
<b>Power Output (Per Channel)</b>	> 85W (8 ohms) / > 125W (4 ohms)	<b>Signal-to-Noise Ratio</b>	Line 108dB
<b>Power Supply</b>	60VA Ultra low noise Toroidal transformer Preamp section toroidal 5 regulated supply rails	<b>Dimensions (WxHxD)</b>	432 x 80 x 330mm (incl. feet)
		<b>Weight:</b>	14kg



## Caspian M2 Power Amplifier

The Caspian M2 Power Amplifier is a powerful and highly refined amplifier that is both ideal for matching with the Caspian M2 Integrated Amplifier to form a bi-amped system, or as a standalone power amplifier.



### Key Features

- Ideal use with the Caspian M2 Integrated Amplifier
- An excellent match for a wide range of other high-end pre-amplification

### Specifications

<b>Inputs</b>	RCA, XLR	<b>Gain:</b>	31.6 dB
<b>Input Impedance</b>	38 kohms	<b>Harmonic Distortion</b>	<0.005% 1kHz - 8 ohms
<b>Input Sensitivity</b>	240mV rms	<b>Signal-to-Noise Ratio</b>	100dB (ref. 900 mV)
<b>Output</b>	Speakers L&R, RCA, XLR	<b>Power Source</b>	220V - 240V 50Hz / 60Hz / 100V/120V 50/60Hz
<b>Power Output (Per Channel)</b>	> 85W (8 ohms) / > 125W (4 ohms)	<b>Power Consumption</b>	Standby: 5W Full power / 2 channels: 8 ohms = <330W / 4 ohms = <550W
<b>Power Supply</b>	60A Ultra low noise Toroidal Transformer	<b>Dimensions (WxHxD)</b>	432 x 80 x 330mm (incl. feet)
<b>Damping Factor</b>	>160 (8 ohms)	<b>Weight</b>	14kg
<b>Frequency Response</b>	-3dB, <3Hz - >100kHz		



## Caspian M2 CD Player

The Caspian M2 CD Player delivers smooth, detailed performances that has become an industry benchmark. The impressive resolution brings an analogue-like element to the listening experience.



### Key Features

- Independent Analogue output stage power supply
- Programme facility
- Track information display

### Specifications

<b>Operating System</b>	CD Digital Audio System (CD, CD-R, CD-RW)	<b>D/A Conversion</b>	PCM1730E Advance segment
<b>Frequency Response</b>	20Hz - 20kHz ± 0.2dB	<b>Resolution / Sampling</b>	24 bits / 192 kHz
<b>Harmonic Distortion</b>	<0.0015% @ 0dB, 1kHz (typically 0.0005%) <0.005% @ -30dB, 1kHz / <0.01% @ 0dB, 20kHz	<b>Oscillation</b>	3rd Overtone oscillation
<b>Intermodulation Distortion</b>	< 0.001% @ 0dB (typically 0.0005%)	<b>Crystal</b>	Super precision, custom made
<b>S/N Ratio (IHF-A Wtd.)</b>	105dB L&R	<b>Jitter</b>	< 130 psec
<b>Wow and Flutter:</b>	Quartz precision	<b>Idle Pattern</b>	< -105dB L&R
<b>Channel Separation</b>	>100 dB @ 1kHz / >100 dB @ 20kHz	<b>Stop-Band Rejection</b>	< -95 dB
<b>Output Voltage</b>	2.2V rms	<b>Power Supply</b>	Toroidal transformer 12 fully regulated power rails
<b>Digital Outputs</b>	RCA (75 ohms), Optical, XLR (110 ohms)	<b>Power Consumption</b>	< 20W
		<b>Dimensions (W x H x D)</b>	432 x 80 x 330mm (Incl. feet)
		<b>Weight</b>	10kg





# Turntables and Vinyl

---

From the inception of the company, vinyl replay has always been at the heart of Roksan.

The very first Roksan product was the original Xerxes turntable which rapidly became recognised as one of the world's reference record players.

Since then it has seen several upgrades and still exists in its latest form, the Xerxes 20 Plus. With the numerous other Roksan products in the vinyl replay range it has gained an enviable reputation for expertise in all things analogue.





Xerxes 20 Plus pictured with PUG tonearm

## Xerxes 20 Plus Turntable

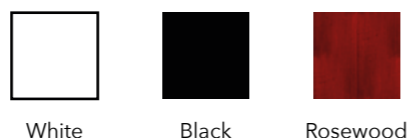
The result of over 30 years of development, the Xerxes 20 Plus turntable features compact clean lines and robust construction of the three-plinth, triple-layer isolation system that'll look great in any room. The Xerxes 20 Plus offers a powerful and expansive sound displaying a fine mid-band, a deep bass and a very smooth treble.



### Key Features

- Three level decoupling allows for accurate and smooth rotation with absolute minimal vibration
- Can be used with both Roksan and other tonearms

### Available finishes



### Specifications

<b>Main Bearing Spindle</b>	Hardened tool steel	<b>Isolation</b>	3 Level de-coupling
<b>Roundness &amp; Concentricity</b>	< 5 Microns	<b>Motor</b>	Custom made 24 pole synchronous
<b>Length - Diameter Ratio</b>	11:01	<b>Pulley</b>	Solid aluminium alloy
<b>Main Bearing Ball</b>	Super precision tungsten carbide	<b>Roundness and Concentricity</b>	< 1 Micron
<b>Roundness</b>	< 1 Micron	<b>Belt</b>	Precision ground neoprene
<b>Diameter</b>	2mm	<b>Motor Mount</b>	Unique synchronising bearing
<b>Main Bearing Housing</b>	Solid phosphor bronze	<b>Motor Drive</b>	External speed controller
<b>Clearance</b>	2/1,0000"	<b>Wow and Flutter</b>	< 0.02%
<b>Inner Platter</b>	2 Piece solid aluminium alloy interference fitted non-resonant	<b>Rumble</b>	< -80dB
<b>Outer Platter</b>	2 Piece solid aluminium alloy interference fitted non-resonant	<b>Dimensions (WxHxD)</b>	450 x 115 x 370mm
<b>Structure</b>	3 Plinth design	<b>Weight</b>	12kg



Radius 7 pictured with NIMA tonearm

## Radius 7 Turntable

A stunning combination of style and technology for the ultimate contemporary vinyl experience. Radius 7 uses an advanced motor assembly unit with electronic speed selection. It's an exceptionally accurate device, featuring a very high quality crystal speed control system, which maintains pitch-perfect speed stability for both 33 and 45rpm.



### Key Features

- Super-accurate crystal speed control system
- Electronic speed switch 33 and 45 rpm
- High quality aluminium alloy pulley system
- Red and blue LED illumination to signify speed

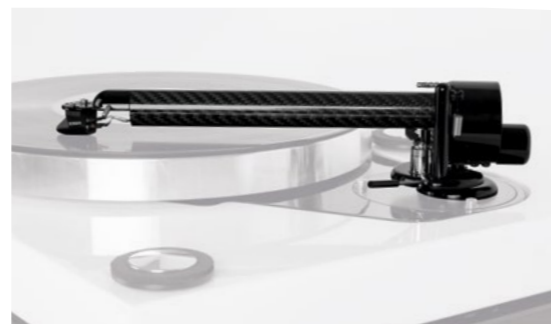
### Specifications

<b>Main Bearing Spindle</b>	Precision machined stainless steel	<b>Speed</b>	33 and 45 rpm
<b>Main Bearing Housing</b>	Precision machined solid brass	<b>Power</b>	90-240V 50-60 Hz
<b>Main Bearing Ball</b>	Precision case hardened steel	<b>Rumble</b>	<-75dB
<b>Pulley</b>	Precision machined aluminium alloy	<b>Wow and Flutter</b>	<0.04%
<b>Platter</b>	Precision machined acrylic	<b>Dimensions (WxHxD)</b>	400 x 150 x 350mm
<b>Motor</b>	Custom made 24 pole synchronous	<b>Weight</b>	7kg



## PUG Tonearm

The Pug was developed to Roksan's high specifications to be one of their most exciting tonearms yet. It has a very high quality 22cm diameter carbon fibre arm tube for lightness, rigidity and micro-detail retrieval.



### Specifications

<b>Bearing</b>	Unipivot	<b>Mounting Hole Diameter</b>	23mm (25mm max.)
<b>Armtube</b>	Carbon fibre	<b>Armboard Thickness</b>	19mm (nominal)
<b>Effective Length</b>	240mm	<b>Recommended Cartridge Tracking Force</b>	1.2 - 3g
<b>Overhang</b>	17.5mm	<b>Recommended Cartridge Weight</b>	5 - 9.5g
<b>Headshell Offset Angle</b>	22.9 degrees	<b>Internal Wiring</b>	Special Roksan flexible PCB cabling
<b>Effective Mass</b>	14g		

## Shiraz Cartridge

Regarded as one of the finest and smoothest sounding cartridges available, the Shiraz is Roksan's 'flagship' design and is renowned for its detail, separation of instruments and sonic refinement. This moving coil design has a superior stylus, which we believe is the world's best diamond profile design.



### Specifications

<b>Type</b>	Moving coil	<b>Recommended load</b>	30 - 100ohms (100ohms recommended)
<b>Output</b>	0.21 mV/cm/sec (RMS) 1.05 mV @ 5cm/sec recorded velocity	<b>Coil Impedance</b>	24 ohms
<b>Stylus</b>	Recorded velocity super fineline Gyger II	<b>Frequency Response</b>	15Hz - 30kHz
<b>Cantilever</b>	Aluminium tube	<b>Channel Balance</b>	Within 1dB
<b>Tracking Weight</b>	2.2 - 2.5g (2.4g Recommended)	<b>Channel Separation</b>	30dB
<b>Cartridge Body</b>	Solid aluminium alloy	<b>F I M</b>	< 0.5%, 19µ
<b>Generator Fixing</b>	Unique 3 point rigid fixing	<b>Cartridge Weight</b>	8.2g
<b>Cartridge Fixing</b>	Standard 0.5 inch centres (12.7mm)		

## NIMA Tonearm

Combining solid aluminium alloy tubing, a stainless steel alloy and polished acrylic; this great-value tonearm is made of ten individual precision-machined components, which are in turn hand-assembled to produce a vast panoramic sound with plenty of clarity, speed and punch.



### Specifications

<b>Bearing</b>	Stainless steel unipivot	<b>Effective Mass</b>	10g
<b>Arm Tube</b>	Aluminium alloy	<b>Mounting Hole Diameter</b>	23mm
<b>Headshell</b>	Acrylic	<b>Arm Board Thickness</b>	7-25mm (max.)
<b>Effective Length</b>	240mm	<b>Recommended Cartridge Weight</b>	5 - 12g
<b>Overhang</b>	17.5mm	<b>Recommended Tracking Weight</b>	1.5 - 3.5g
<b>Distance From Record Centre</b>	222.5mm	<b>Internal Wiring</b>	Special Roksan flexible PCB cabling
<b>Headshell Offset Angle</b>	22.9 degrees		

## XPS 7 Speed Control

The XPS 7 is the entry level speed control for the Xerxes turntable. It supplies a consistent and accurate control for the Xerxes and is electronically switchable between 33 and 45rpm. It is an ideal replacement and upgrade for previous XPS speed controls with an improvement in rhythm and tempo.



### Specifications

<b>Output voltage</b>	16.5 Vac ±0.5 V ac rms (33 rpm) 16.5 Vac ±0.5 V ac rms (45 rpm)	<b>THD+N</b>	< 0.1%
<b>Phase</b>	90 degrees ±5 degrees	<b>Output impedance</b>	< 0.5 ohm
<b>DC offset</b>	<50 mV	<b>Dimension (WxHxD)</b>	90 x 50 x 140mm

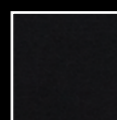
# Caspian Vinyl Electronics

Experience the ultimate vinyl experience with the Roksan Caspian Vinyl Electronics series. Use our RPM speed control and RPP reference phono amplifier or our all-in-one Vinyl Control System for the best music satisfaction.

## Available finishes



Silver



Black



## Caspian VSC and VSC S2

For ultimate convenience and a full solution for getting the best performance from the Xerxes turntable, the VSC and VSC S2 units combine both the RPM speed control and RPP phono stage in a single chassis. The VSC has one single power supply for both RPM and RPP sections and the VSC S2 has two power supplies, one dedicated to each section.



### Key Features

- Ultimate control and convenience for the Xerxes turntable
- VSC is upgradeable to VSC S2

### Specifications

#### RPM

Output Voltage	16V rms (33 / 45 rpm)
Phase	0 degrees and 90 degrees
DC Offset	<10mV
THD + N	<0.1%
Output Impedance	<0.1 ohms

#### RPP

Gain Settings	MM: 40.6dB @ 1kHz MC1: 56dB @ 1kHz MC2: 65.5dB @ 1kHz
Signal to Noise Ratio	MM: >89dB AWTD (ref. 5.0 mV) MC1: >79dB AWTD (ref. 5.0 mV) MC2: >70dB AWTD (ref. 5.0mV)
THD +N	<0.01%
Overload Margin	26dB All Settings
Output Impedance	< 50 ohms
Voltage Supply Requires	+26, 0, -26 Vdc (DS1.5)





## Caspian RPM

The RPM speed control is the reference speed controller for the Xerxes turntable. The RPM is a high-specification, ultra-accurate statement speed control. Consisting of an entirely new and highly advanced digital speed control PCB and audiophile-grade components.



### Key Features

- Advanced digital speed control PCB
- Pitch-perfect accurate speed stability
- Flagship DS1.5 power supply module
- 33 and 45 rpm speed selection
- Adjustable speed control in micro-increments up to 6.25% either way

### Specifications

Output Voltage	16V rms (33 / 45 rpm)
Phase	0 degrees and 90 degrees
DC Offset	<10mV
THD +N	<0.1%
Output Impedance	<0.1 ohms



## Caspian RPP

The RPP is the reference phono amplifier for the Xerxes turntable. Using the highest quality components results in a highly detailed and insightful performance, which possesses bass weight and involving rhythmic speed along with upper frequency sweetness and a wide, deep soundstage.



### Key Features

- Compatible with both Moving Magnet and Moving Coil cartridge designs
- Three switchable gain level settings
- Top-level audiophile grade components used throughout
- Features dedicated DS1.5 power supply

### Specifications

Gain Settings	MM: 40.6dB @ 1kHz MC1: 56dB @ 1kHz MC2: 65.5dB @ 1kHz
Signal to Noise Ratio	MM: >89dB AWTD (ref. 5.0 mV) MC1: >79dB AWTD (ref. 5.0 mV) MC2: >70dB AWTD (ref. 5.0mV)
THD +N	<0.01%
Overload Margin	26dB all settings
Output Impedance	< 50 ohms
Voltage Supply Requires	+26, 0, -26 Vdc (DS1.5)

# Glossary of Terms

<b>Amplifier</b>	An electronic device that increases (or 'amplifies') the power of an electrical input signal.
<b>Analogue</b>	A telecommunications signal that is translated into electronic pulses.
<b>aptX</b>	A Bluetooth technology that reduces bit rate without affecting audio quality.
<b>Audio sources</b>	Devices in an audio system, such as CD players, media players, and turntables.
<b>Audiophile</b>	A person who places a high priority on having a home audio system that performs very well.
<b>Bit Rate</b>	The number of digital bits a system transfers per second. The higher the bit rate, the higher the quality of the signal.
<b>Bluetooth</b>	Bluetooth is a wireless technology for exchanging data (such as audio) over short distances.
<b>Bypass</b>	Term used to when converting an integrated amplifier into a power amplifier i.e. bypassing the per-amp stage.
<b>Cartridge</b>	The device that converts the movements of a stylus in the grooves of an vinyl record to electrical signals. It's subdivided into moving magnet and moving coil types.
<b>Coaxial</b>	A digital audio interconnect cable with RCA jacks on each end, used to connect home audio components to the receiver.
<b>DAC (D/A converter)</b>	Digital-to-analogue converter is a device that transforms incoming digital signals into analogue form.
<b>Damping</b>	Damping factor is a number representing the ratio of the impedance load to the output impedance of the amplifier.
<b>Decibel (dB)</b>	The dB usually used to measure the scale of audio or more simply volume.
<b>Frequency (Hz)</b>	The number of times an event repeats itself in a given period of time. Generally the time period for audio frequencies is one second, and frequency is measured in cycles per second, abbreviated Hz.
<b>Gain</b>	The measure of how much a circuit amplifies a signal.
<b>Headphone Jack</b>	An output that allows for headphones with a 1/4" plug or 3.5mm with a converter.
<b>Level</b>	Another word for signal voltage, power, strength or volume.
<b>Line level</b>	Line level is a specified strength of audio signal, used to transmit analogue sound between audio components.
<b>MM Phono</b>	An MM phono is a phono stage amplification boost needed to connect a Moving Magnet cartridge used with a vinyl record replay system.
<b>Moving Coil</b>	A magnetic cartridge in which the stylus moves a coil via the cantilever, while the magnet is fixed in position.
<b>Moving Magnet</b>	A magnetic cartridge in which the stylus moves a magnet via the cantilever, while the coil is fixed in position.
<b>Optical Audio</b>	Optical audio, sometimes known as TOSLINK, is a type of fibre optic connector, commonly used to carry digital audio signals.
<b>Phono Stage (RPP)</b>	A phono stage (RPP) provides the connection between a turntable and an amplifier.
<b>RCA</b>	RCA is a type of electrical connector, commonly used to carry audio signals.
<b>Sensitivity</b>	In audio terms, sensitivity is a measure of the efficiency with which loudspeakers turn the electrical energy provided by a power amplifier into acoustic energy.
<b>Signal-to-Noise Ratio</b>	Signal-to-Noise ratio is a specification that describes how much noise an audio component has compared to the signal. It is usually expressed in dB below a given output level.
<b>Sound Stage</b>	A sound stage is area between a pair of speakers from which they appear to make multi-dimensional audio effects.
<b>Speed Control (RPM)</b>	A unit that controls the rotation speed of a turntable. Usually 33 or 45 rpm (rotations per minute).
<b>Stereo</b>	An audio system which delivers two channels of music, left and right.
<b>Stylus</b>	A small diamond on the end of a cartridge's cantilever. This picks up vibrations from the groove of a vinyl record.
<b>Tonearm</b>	The function of a tonearm is to support the cartridge in the correct position over the record and allow it to move inward to the centre of the record while maintaining this position.
<b>Tracking Weight</b>	The correct downforce and anti-skate setting to a cartridge, so it reads the most information possible from the record wall without causing damage to the cartridge or the record.
<b>Turntable</b>	A device to rotate at the correct speed a vinyl recording.
<b>USB</b>	USB is a serial bus standard that allows you to transfer digital data.
<b>Wireless</b>	Wireless is the connectivity of one device to another that requires no physical cabling.
<b>XLR</b>	XLR is a type of electrical connector, used mostly in professional audio and video electronics cabling applications for sound equipment.



For more information visit [roksan.co.uk](https://www.roksan.co.uk)



**Roksan Audio**

24 Brook Road, Rayleigh

Essex, SS6 7XJ, UK

+44 (0)1268 740 580

[info@roksan.co.uk](mailto:info@roksan.co.uk)

[roksan.co.uk](http://roksan.co.uk)