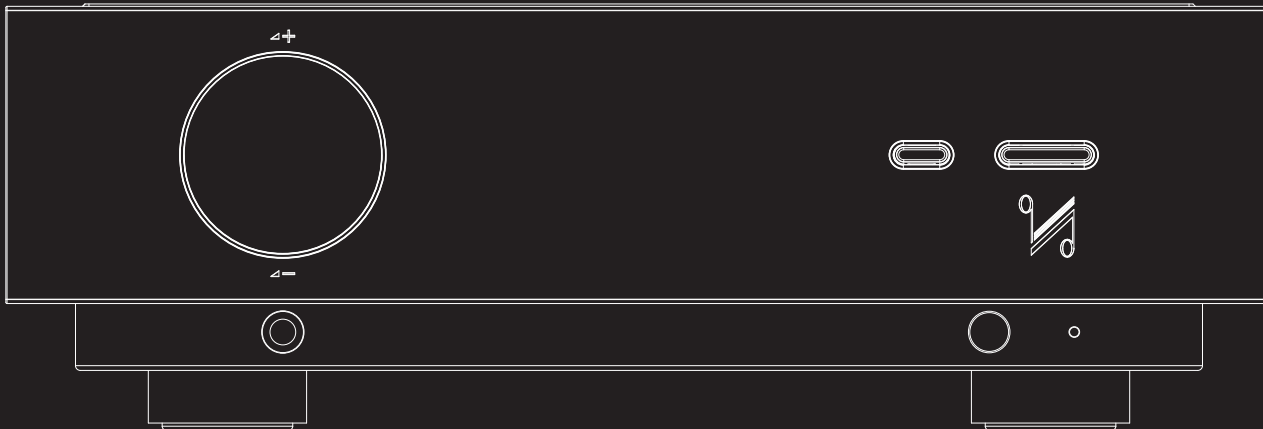


Artera Pre



User Manual

QUAD

the closest approach to the original sound



IMPORTANT SAFETY INFORMATION



This lightning flash with arrowhead symbol within an equilateral triangle is intended to alert the user to the presence of non-insulated “dangerous voltage” within the product’s enclosure that may be of sufficient magnitude to constitute a risk of electric shock.

Warning: To reduce the risk of electric shock, do not remove the cover (or back) as there are no user-serviceable parts inside. Refer servicing to qualified personnel.

This exclamation point within an equilateral triangle is intended to alert the user to the presence of important operating and maintenance instructions in the literature accompanying the appliance.

Read these instructions.

Keep these instructions.

Heed all warnings.

Follow all instructions.

Do not use this apparatus near water.

Clean only with dry cloth.

Do not block any ventilation openings. Install in accordance with the manufacturer’s instructions.

Do not install near any heat sources such as radiators, heat registers, stoves, or other apparatus (including amplifiers) that produce heat.

Do not defeat the safety purpose of the polarized or grounding plug. A grounding plug has two blades and a third grounding prong. The wide blade or the third prong is provided for your safety. If the provided plug does not fit into your outlet, consult an electrician for replacement of the obsolete outlet.

Protect the power cord from being walked on or pinched particularly at the plugs, convenience receptacles, and at the point where they exit from the apparatus.



Use only with the cart, stand, tripod, bracket, or table specified by the manufacturer, or sold with the apparatus. When a cart or rack is used, use caution when moving the cart/apparatus combination to avoid injury from

tip-over.

Unplug this apparatus during lightning storms or when unused for long periods of time.

Refer all servicing to qualified service personnel. Servicing is required when the apparatus has been damaged in any way, such as power supply cord or plug is damaged, liquid has been spilled or objects have fallen into the apparatus, the apparatus has been exposed to rain or moisture, does not operate normally, or has been dropped.

Mains Supply: The mains operating voltage of all QUAD Artera series units is shown on the rear panel. If this voltage does not match the mains voltage in your area, consult your QUAD dealer about converting the unit.

The mains supply fuse on the rear panel is accessible when the IEC mains plug has been removed. In the rare event that it has broken, check for any obvious cause before replacing the fuse with one of the correct rating and type. The fuse values are:

Artera Pre

220~240V (UK, China, etc.) T500mAL 250V Slow Blow

100~120V (USA, Japan, etc.) T1AL 250V Slow Blow

WARNING: Only use attachments/accessories specified or provided by the manufacturer (such as the exclusive supply adapter, battery etc.).

WARNING: The mains plug/appliance coupler/direct plug-in adapter is used as disconnection device; the disconnection device shall remain readily operable.

CAUTION: These servicing instructions are for use by qualified service personnel only. To reduce the risk of electric shock, do not perform any servicing other than that contained in the operating instructions unless you are qualified to do so.

Do not install this equipment in a confined or built-in space such as a bookcase or similar unit, and keep well ventilated in open space. The ventilation should not be impeded by covering the ventilation openings with items such as newspaper, table-cloths, curtains etc.

WARNING: To reduce the risk of fire or electric shock, do not expose this apparatus to rain or moisture. The apparatus shall not be exposed to dripping or splashing and ensure that objects filled with liquids, such as vases, shall not be placed on the apparatus. No naked flame sources, such as lighted candles, should be placed on the apparatus.



This equipment is a Class II or double insulated electrical appliance. It has been designed in such a way that it does not require a safety connection to electrical earth.

QUAD

Artera Pre

CONTENTS

INTRODUCTION 4

UNPACKING THE EQUIPMENT..... 4

PLACEMENT 4

FITTING HANDSET BATTERIES 4

REMOTE HANDSET 5

CONTROLS AND CONNECTIONS 6

INSTALLATION 7

AC MAINS CONNECTIONS 7

ANALOGUE SIGNAL INPUT..... 7

ANALOGUE SIGNAL OUTPUT..... 8

TRIGGER CONNECTIONS..... 9

SYSTEM CONNECTION 10

OPERATION 11

MENU SETTINGS 13

SPECIFICATIONS16



Introduction

Thank you for investing in QUAD hi-fi equipment. QUAD Artera Pre is an innovative pre-amplifier with superior sound quality that matches other Artera products and is characterised by the purity of its analogue electronics. Artera Pre is compatible with many music sources thanks to its versatility with both balanced and unbalanced inputs and outputs. We are certain Artera Pre will bring you many hours of listening pleasure.

Unpacking the equipment

The carton contains:

- The Artera Pre
- The Artera Pre user manual
- One glass top plate
- One IEC mains cable with a plug suitable for your area
- One remote handset and two AAA batteries

Consult the dealer from whom you purchased the equipment if any item is not present. Carefully unpack the unit and accessories. Take care not to damage the surface finish when removing the protective polythene sleeve. Retain the user manual and information concerning the date and place of purchase of your equipment for future reference. If you transfer the unit to a third party please pass on this instruction manual along with the equipment.

Placement

The unit must be mounted on a solid, level and stable surface. The QUAD Artera Pre should be mounted on a shelf with sufficient ventilation above and to the sides and rear.

Before you connect the QUAD Artera Pre to the AC mains check that the voltage corresponds to the rating on the rear panel of the product. If in doubt, consult your dealer. If you move to an area which has a different mains voltage, seek advice from a QUAD appointed dealer or competent technician.

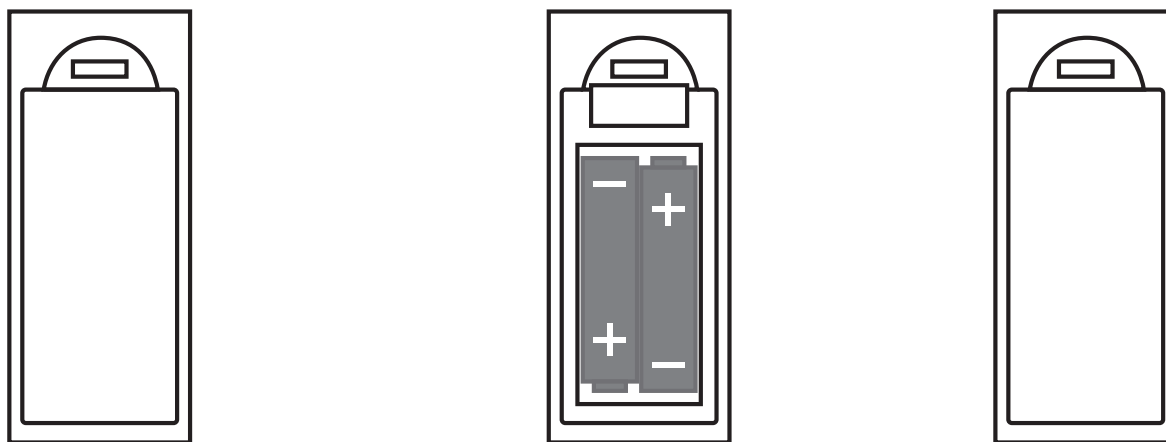
Fitting handset batteries

Open the battery cover. Unwrap the two supplied AAA batteries and place them in the battery compartment with the polarity as shown. Replace the cover.

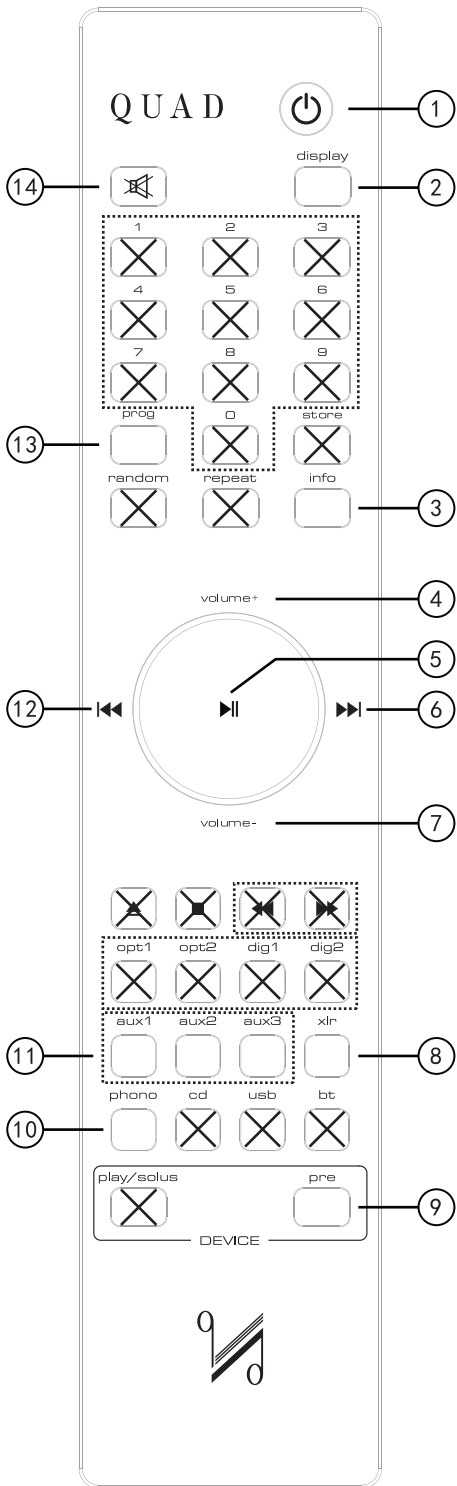
Always use AAA batteries and always replace them in sets. Never mix old and new batteries. Very weak batteries can leak and damage the handset. Replace them in good time.

There is a risk of fire and burns if a battery is handled improperly. Do not disassemble, crush, puncture, short external contacts, or dispose of in fire or water. Do not attempt to open or service a battery. Discard used batteries in full accordance with recycling regulations in force in your area.

1. Open the battery compartment cover
2. Insert 2 AAA batteries with the correct polarity as shown
3. Replace the cover

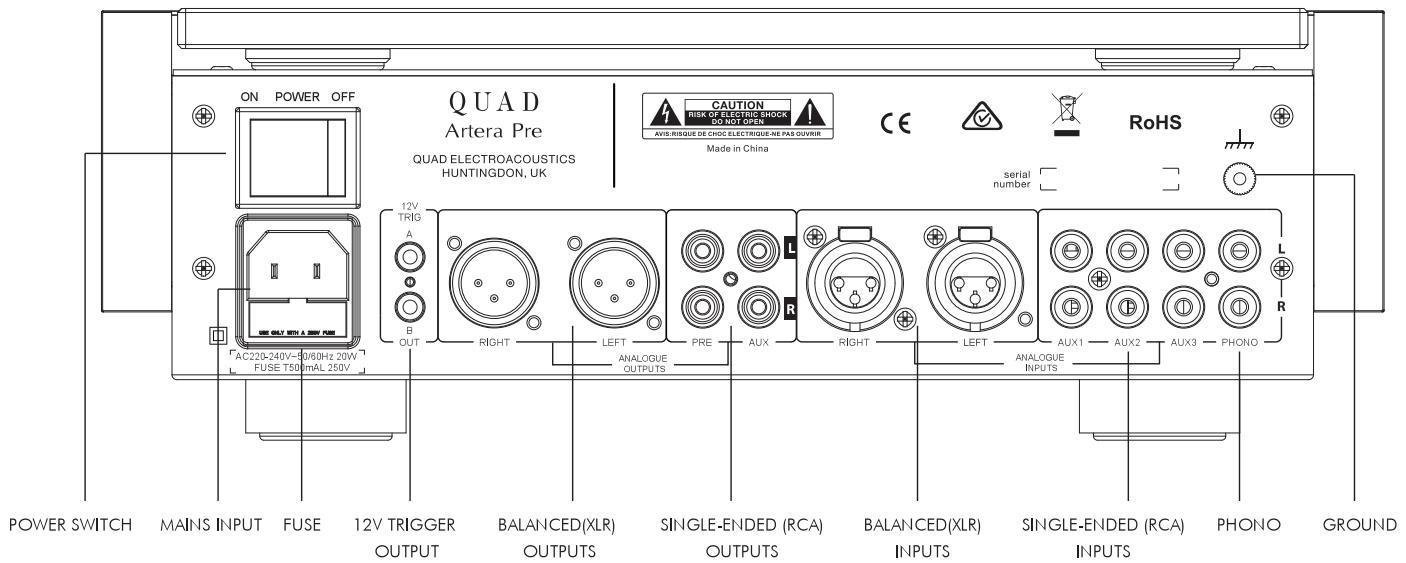
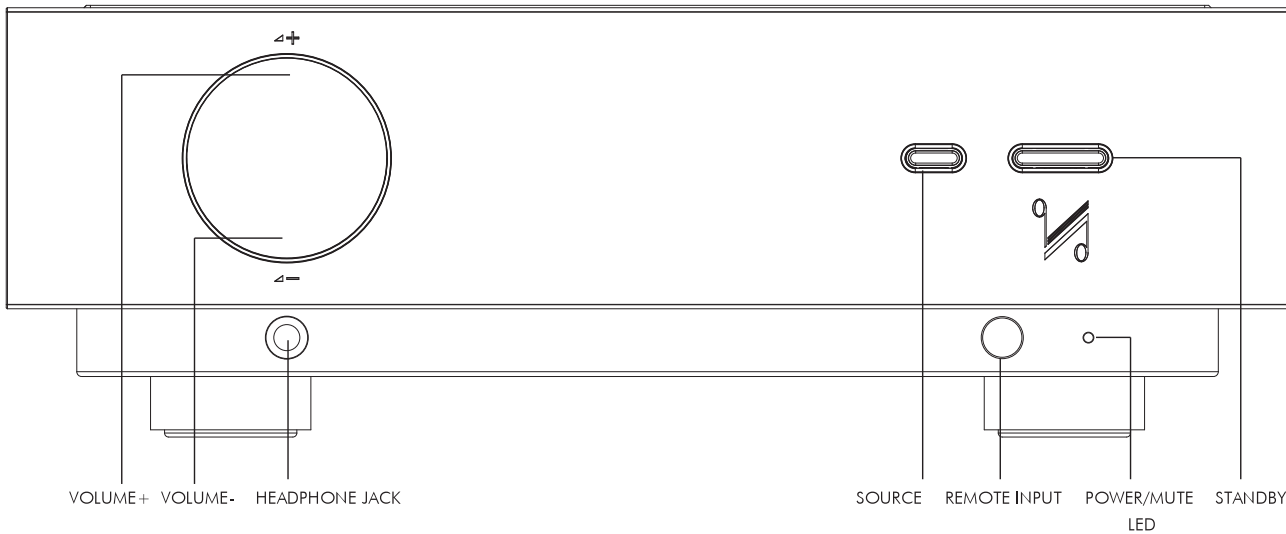


Remote handset



- | | | |
|----|-----------|---|
| 1 | Standby | Press to enable / disable standby mode |
| 2 | Display | Press to turn the display on/off
Press and hold to adjust the display brightness level |
| 3 | Info | Press to display more information |
| 4 | Volume+ | Press to increase volume |
| 5 | ▶ | Press to confirm the menu settings |
| 6 | ▶▶ | Press to switch channels/menu settings |
| 7 | Volume- | Press to decrease volume |
| 8 | xlr | Press to select XLR input channel |
| 9 | Pre | Press to select Artera Pre control mode |
| 10 | Phono | Press to select PHONO input channel |
| 11 | Aux1 /2/3 | Press to select Analogue input channel |
| 12 | ◀◀ | Press to switch channels/menu settings |
| 13 | Prog | Press and hold to enter menu settings |
| 14 | Mute | Press to enter/exit mute mode |

Controls and connections



Installation

Open the carton box, take out the glass top and the Artera Pre separately. Place the Artera Pre onto a sturdy shelf or table. Put the glass top on the lid of Artera Pre after making all connections.

Before making any connections to your high fidelity equipment make sure that all units in the system are switched off and unplugged at the mains.

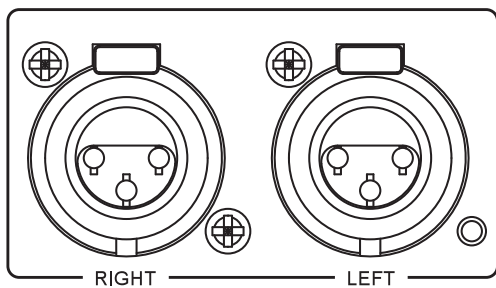
AC Mains connections

Before connecting your QUAD equipment to the AC mains supply, check and make sure the voltage marked on the rear panel matches the voltage of your supply.

Analogue signal input

The balanced input

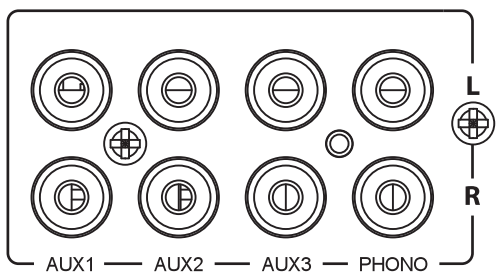
The balanced connections can provide greater dynamic capability by improving the S/N ratio. Please connect the balanced output of your source to Artera Pre's balanced input. Each L/R channel needs a separate balanced cable.



The single-ended inputs

Use a screened RCA cable of high quality to connect the output of the source unit and the matching input on the Artera Pre. The interconnecting cable should be of low-noise construction and fully screened to minimize hum and noise transmission.

Artera Pre includes four inputs: AUX1, AUX2, AUX3 and PHONO. The PHONO input is only for connection to a turntable fitted with an MM or MC cartridge.



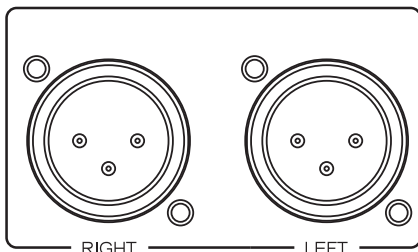
Analogue signal output

The XLR balanced output

If you are connecting QUAD Artera Pre to a QUAD Artera Stereo or other power amplifier with balanced inputs we strongly advocate the use of the balanced XLR connections.

A major advantage of balanced interconnection is the suppression of ground loop problems and reduction of electromagnetic interference.

Balanced line connections use 3 conductors, one for the ground and two for the voltage difference between the signal and the ground at the source unit. The signal is thus 'cleaner' and free from earth-induced currents and other LF artifacts and offers improved S/N ratio.



The PRE single-ended output

The single-ended analogue signal output of QUAD Artera Pre is for connecting to a unit with single-ended inputs such as a power amplifier.



PRE

The AUX output (fixed level - line output)

The AUX direct output is used for connecting to a unit with single-ended inputs that requires no preprocessing or volume control of the signal, for example an integrated amplifier, audio processor, AV controller or an audio recording device.

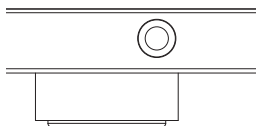


AUX

The headphone output

The front panel of Artera Pre has a 6.3mm headphone output jack for connecting headphones. When you plug in headphones the output of Artera Pre OUT/XLR OUT will be muted except for the output of AUX OUT. The indicated headphone range of volume adjustment is 0-100.

Note: using headphones at a high volume for long periods can cause permanent damage to your hearing.



Trigger connections

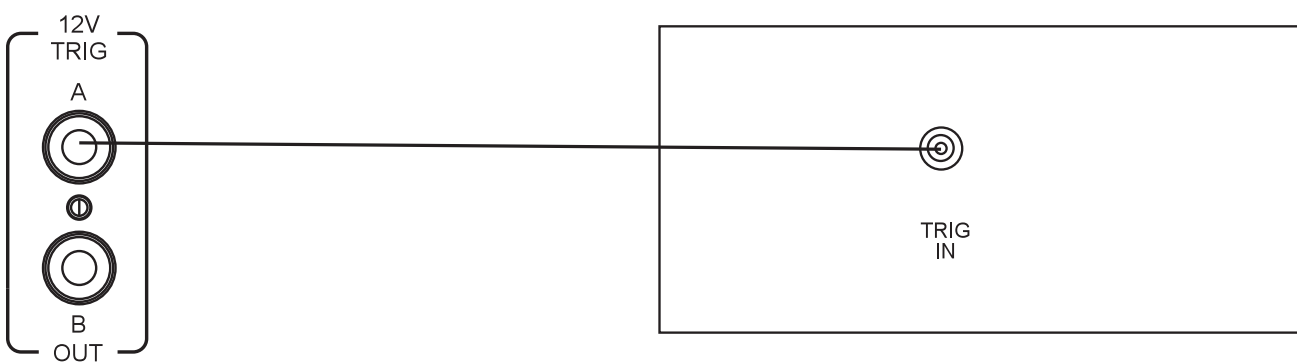
This apparatus provides two standard 12v trigger output ports, used for connecting other units with TRIGGER INPUTS. This enables a remotely triggered system.

If you have a Quad Artera system, we advise connecting the Trigger IN and OUT. This will enable all Artera units to be brought in and out of standby at the same time.

To connect the Triggers, you will need a cable terminated with 3.5mm jack plugs. One end plugs into the TRIG IN of the slave unit and the other to the TRIG OUT of the master control unit. In the diagram below we show how you can use the Artera Pre TRIG OUT to switch the Artera Stereo Power Amplifier using its TRIG IN.

Artera Pre

Artera Stereo



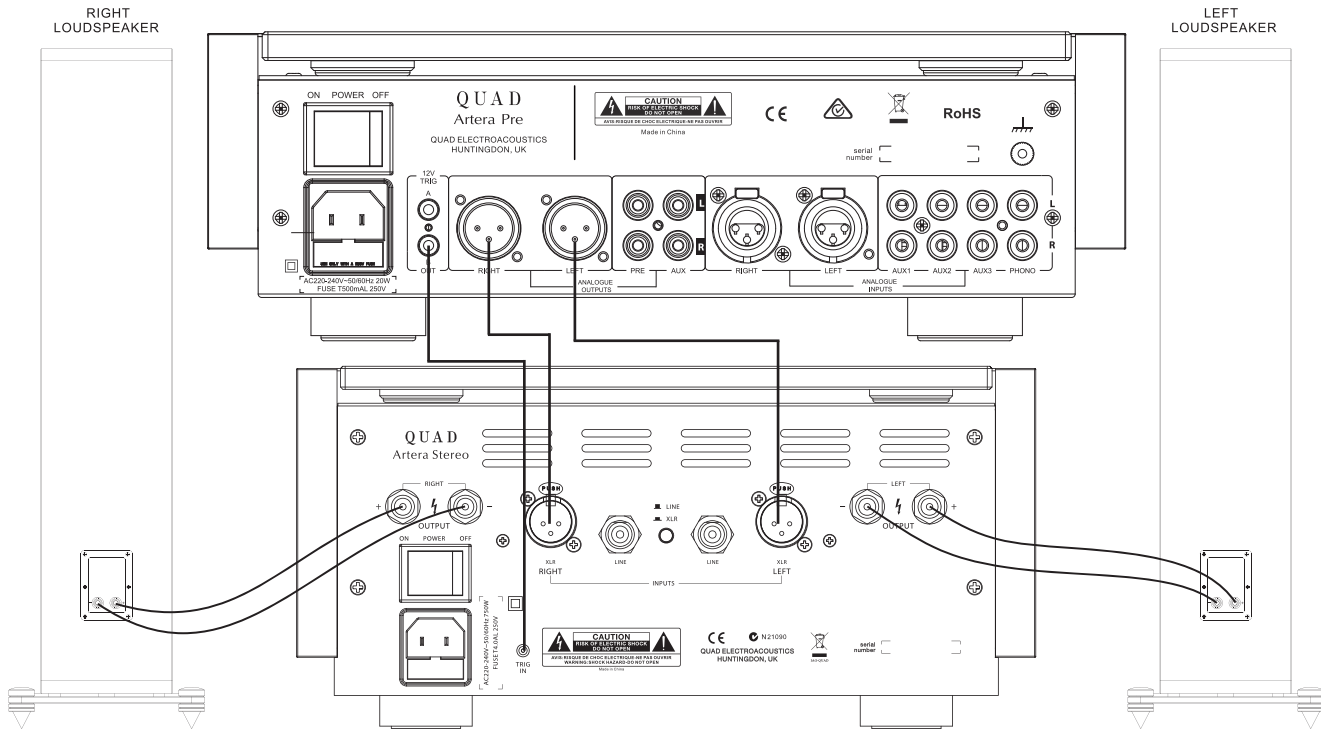
The GND terminal

The GND terminal should be used where you are connecting a turntable that is double-insulated and has a separate ground wire connected to its tonearm. Please note that this terminal should only be used to reduce 'hum' in a system – it is NOT a safe ground plane.

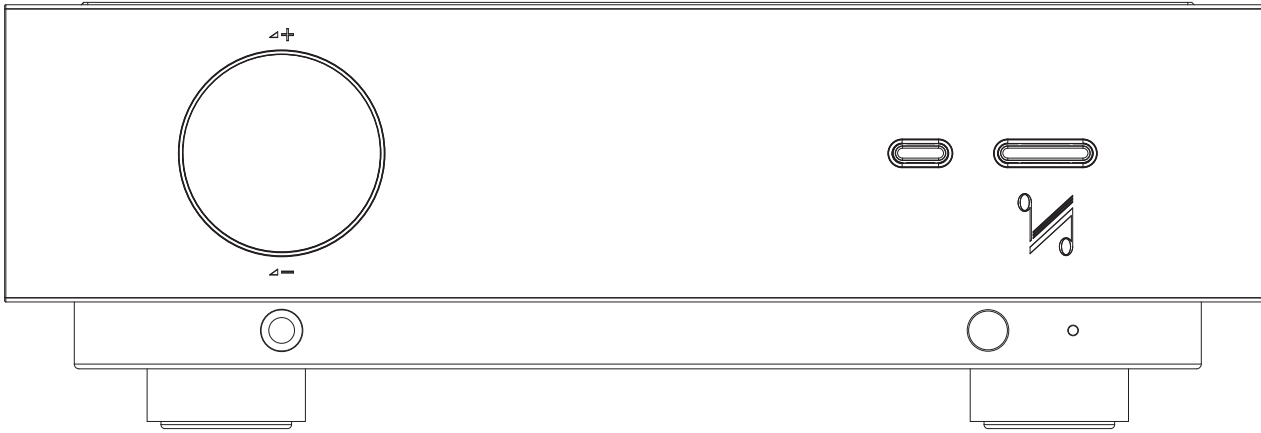
If you are in any doubt, please consult your dealer for advice.



System connection



Operation

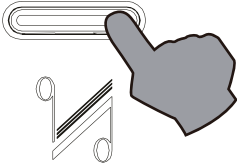


Switching on

Before connecting the AC mains, please ensure that the power switches of all units are switched off. Then check that all leads are correctly installed. Next, power on the Artera Pre first followed by the power amplifier. The Artera Pre will enter Standby mode - the indicator at the bottom of the front panel will glow Red.

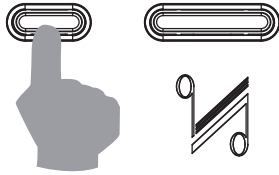
Now press the Standby button on the Artera Pre or on the remote handset, the Display of Artera Pre lights up and the indicator at the bottom goes off.

If the trigger system is connected, the connected slave unit will also go from Standby to "Active".



Selecting an input

There are five source inputs provided, labeled AUX1, AUX2, AUX3, PHONO and XLR. Briefly touch the SOURCE button on the front panel or press the corresponding key on the remote handset to select the desired input.



Volume adjustment

To alter the volume level from the handset:

Press the Volume +/- keys to alter the listening level as required.

To alter the volume level from the front panel:

Increase volume by pressing the upper part of screen.
Decrease volume by pressing the lower part of screen.
The volume level is variable between 0 and 100.

Note:

By default the volume level setting is limited to 80 max (see Volume Limit).

When first switched on: The system sets the default volume level to 20 - a safe low level.

When next switched on: When coming out of standby the Artera Pre will be set to the previous used volume setting, except if louder than 50, in which case the volume will default to 50. The volume control of the main outputs (RCA & XLR) and the headphones output are independent and the previous setting for each are remembered (if less than 50).

Mute

Press the MUTE key on the handset to mute the sound output. The word "Mute" appears briefly on screen and then the display screen restores. In this mode, if you press the info key on the handset, "Mute" will be displayed, indicating that the unit is muted.

AUX1 Mute
No Signal

When the output is muted:

- Pressing the Mute key on the handset cancels mute.
- Changing the Volume level cancels mute.
- Bringing the unit into Standby and then out of it will cancel mute.

Altering the display brightness

Briefly press the Display key on the handset, the word "Display Off" appears on screen and the display will revert to off.

Briefly press the Display key on the handset again, the word "Display On" appears on screen and the display will revert to on.

There are 8 levels of brightness available. Press and hold the Display key on the handset: the word "Brightness Level 8" appears briefly on screen, which is the default setting. Briefly press the Display key on the handset again to select from the 8 levels of brightness shown in sequence on the screen with each key press.

Brightness
Level 8

Menu settings

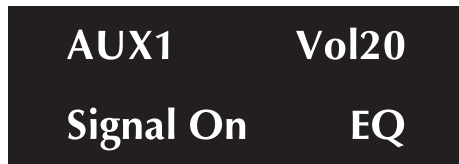
Press and hold the Prog key on the handset to enter the menu settings. The menu is operated using the central keys on the remote control; Left, Right, Up, Down and Enter. Move along the menu options using the Left Right keys. To access a setting press Enter then use Left Right keys to change the setting and confirm the selection by pressing Enter.

EQ

For tone adjustment, when EQ is set to On, Bass and Tilt will be enabled. The EQ setting is Off by default. This setting only takes effect on AUX1, AUX2, AUX3 (AvDir(AUX3)=Off), Phono and XLR (XLR Direct=Off). These settings do not affect AUX OUT.
 Note: independent EQ (Bass and Tilt) and Gain settings can be assigned to each input.



When the display is in Info mode it will indicate if EQ is ON for the active source, as shown below.



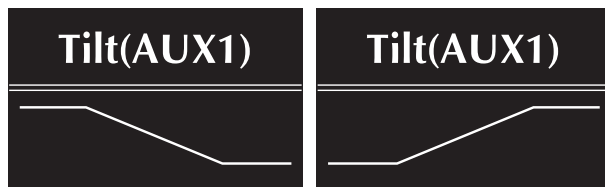
Bass

When EQ is On the bass response can be adjusted. There are three bass settings: Flat, Boost and Cut. Flat is the default setting.
 Note: EQ is not applied to AUX3 when AvDir(AUX3) = On and to XLR when XLR Direct = On.



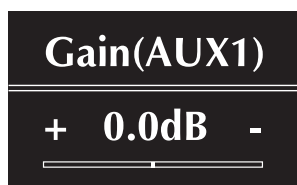
Tilt

Tilt adjusts the whole frequency response in a natural way. There are seven types of Tilt that can be set in dB (Bass,Treble): $[(+3,-3)]$, $[(+2,-2)]$, $[(+1,-1)]$, $[(0,0)]$, $[-1,+1]$, $[-2,+2]$, $[-3,+3]$. The default setting is $[(0,0)]$.
 Note: EQ is not applied to AUX3 when AvDir(AUX3) = On and to XLR when XLR Direct = On.



Gain

Individual Gain settings for each input can be adjusted by +/-8dB in order to change the input sensitivity. 0dB is set as default. This setting can be used to adjust the gain of AUX1, AUX2, AUX3 (AvDir(AUX3)=Off), Phono and XLR.



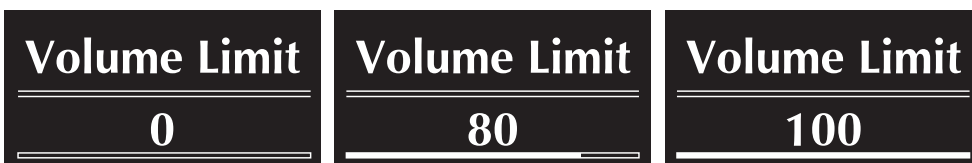
Balance

The Left and Right channel balance can be adjusted up to 6dB in 0.5dB steps, from +3dB / -3 dB to -3dB / +3dB



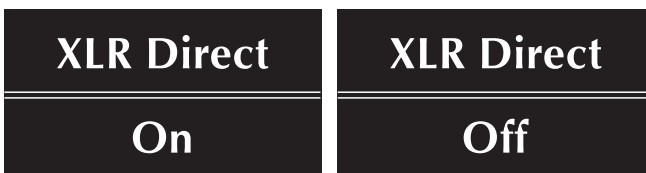
Volume Limit

To limit the maximum output level of your amplifier and to protect your loudspeakers, you can set a maximum volume limit. The limit can be set between 0 - 100 , the default value is 80.



XLR Direct

In XLR Direct mode the signal path is fully balanced and the input is connected directly to the 4 channel volume control and then straight to the XLR output. This mode bypasses all other signal processing and EQ features will not be available.



AvDir (AUX3)

AV Bypass mode for AUX3 , the gain of the AUX3 audio path is set to fixed level output (0dB). This is for use with sources with build in volume control such as AV processors.



Phono

The Artera PRE has a built-in low noise precision RIAA amplifier for use with turntables fitted with either MM or MC cartridges.

Select MM or MC to match your cartridge type; MM is the default setting. To avoid hum, the GND cable of your turntable tonearm should be connected to Artera Pre's GND terminal.



Default Channel

Artera Pre can default to your choice of input when switched on. Alternatively it can be set to "Recall Last Input". The unit is set to "Recall Last Input" by default.



Auto Standby

Artera Pre features three modes of Standby, all of which can be set through the menu settings.

Auto Standby Never: even if there is no signal input, the unit will not enter Standby automatically.

Auto Standby 20 Minutes: if there is no signal input for 20 minutes, the device will enter Standby automatically.

Auto Standby 1 Hour: if there is no signal input for 1 hour, the device will enter Standby automatically.



Brightness

The brightness of the display can be adjusted and has 8 levels. This feature can also be accessed directly using the display key on the remote control - press and hold to access brightness levels, further presses will change the level.



Factory Reset

To restore the Artera Pre to its factory default settings, select Reset then Yes to confirm.



Firmware

The last menu option show the current firmware version of the Artera Pre.



Specifications (All measurements made with 230V AC supply and all voltages are rms values)

Type	Artera Pre
Analogue Inputs	3 x RCA (AUX1, 2 & 3), XLR, Phono MM/MC
Analogue Outputs	1 x RCA (PRE OUT), 1 x RCA(AUX), 1 x XLR 1 x 6.35mm Headphone Jack
Gain (max.) , Volume = 100	+8dB (Line/XLR) +53.5dB (Phono MM) +73.5dB (Phono MC)
Input Sensitivity (Vol = 84, Vout = 0dBu)	775mV (Line/XLR) 4.1mV (Phono MM) 410 μ V (Phono MC)
Input Impedance	10K (Line/XLR) 47K//100pF (Phono MM) 100R//1.7nF (Phono MC)
Max. Output Level (THD < 0.1%)	2.3V (RCA) 4.6V (XLR)
Input Headroom (THD < 0.1% , Vol = 50)	4.1V (RCA) 8.2V (XLR) 62mV (Phono MM) / 6.2mV (Phono MC) @ 1kHz
Frequency Response	20Hz-20kHz (\pm 0.2dB)
Total Harmonic Distortion	<0.002% (20Hz-20kHz)
S/N Ratio (Vout = 0dBu)	> 110dB(A) (Line/XLR) >80dB(A) (Phono MM) >76dB(A) (Phono MC)
Channel Separation	>100dB (10kHz)
Output Impedance	120 Ohms (RCA) 100 Ohms (XLR)
Standby Consumption	<0.5W
AC Mains Supply Requirement (Factory set)	230V ~ 50-60Hz 115V ~ 50-60Hz 100V ~ 50-60Hz
Dimensions (W×D×H)	320 x 320 x 105mm
Net Weight	7.8kg

Care and cleaning

The surface of the equipment may be cleaned with a damp cloth provided that the power has been switched off first. Solvent based cleaning materials should not be used as they may damage the finish.

Maintenance service

Product service enquiries should, in the first instance, be referred to the supplying dealer. If you need to return your equipment for servicing we recommend that it is shipped in its original packing.

International service centre

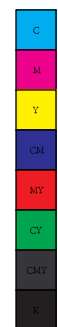
IAG House, 13/14 Glebe Rode, Huntingdon, Cambridgeshire, PE 29 7DL, UK

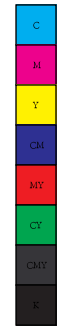
Tel: 01480 452561 Fax: 01480 413403

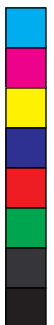
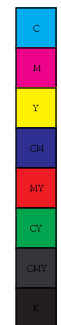


IAG-QUAD

Correct Disposal of this product. This marking indicates that this product should not be disposed with other household wastes throughout the EU. To prevent possible harm to the environment or human health from uncontrolled waste disposal, recycle it responsibly to promote the sustainable reuse of material resources. To return your used device, please use the return and collection systems or contact the retailer where the product was purchased. They can take this product for environmental safe recycling.







QUAD

IAG House, 13/14 Glebe Road, Huntingdon, Cambridgeshire, PE29 7DL, UK
Tel: +44(0)1480 452561 Fax: +44(0)1480 413403 <http://www.quad-hifi.co.uk>
IAG reserves the right to alter the design and specifications without notice. All rights reserved © IAG Group Ltd.
QUAD is a member of the International Audio Group.

