

APP OPERATIONS

Device Selection

The DTS Play-Fi APP allows you to control and direct streaming music to a variety of devices throughout your home that use the DTS Play-Fi system. The streaming music also can be played by Spotify Connect and DLNA. You can set each device to have a unique name. You can also group devices into an Area, where each device will play the same music.

After connecting the network, open the DTS Play-Fi APP, click the '+' icon on the upper right corner of the APP display. Select an Area to add, then select a device on which to play the music. If you wish to play high-resolution audio files, the icon 'Hi-Res AUDIO' should be selected.

Music Services

DTS Play-Fi supports the world's most popular and exciting streaming music services, so you can enjoy your favorites at home just as easily as you do in the gym. See below for more information of streaming music service platforms. Please feel free to choose one you like.

(Note: some streaming music service platforms probably need to be registered.)

Amazon Music

Amazon Prime members can use Amazon's popular music service for free. A growing selection of over 2 million songs is always ad-free and on-demand, with curated playlists, personalized stations and unlimited skips. Upgrade to Prime Music Unlimited, and enjoy 10 million songs, weekly new releases, and more.



Deezer

With 43 million tracks, 100 million playlists, and a presence in 182 countries, Deezer literally covers the globe for its subscribers. Subscriptions start at \$9.99/month, and include ad-free playback, premium audio quality, and more.



iHeartRadio

iHeartRadio combines access to over 1,500 of the most popular live terrestrial and internet radio stations with unique live events and compelling custom features, like artist radio, personalized radio, and on-demand podcasts for FREE. Their new Plus and All-Access subscriptions allow you to pause, rewind, skip and save live radio content, stream on-demand music, and more.



Internet Radio

DTS Play-Fi has a built-in Internet Radio service that gives you access to thousands of radio stations and podcasts from around the globe. Instantly see your local favourites, or tune into the BBC, ESPN, Radio Disney, the Wall Street Journal, and more. Browsing is a snap, and if you find a station you love, just give it a star and it'll be ready to stream whenever you are. Free, no subscription required.



Juke

With more than 20 million tracks and a dedicated base of music fans, Juke's streaming service includes popular features like on-the-go playlists, new music discovery, and ad-free listening. DTS Play-Fi is the only multi-room audio platform to offer the Juke service.



KKBox

KKBox is Asia's leading streaming music service, with over 30 million tracks from 500 local and major labels, and the most comprehensive collection of Asia-Pop in the world. Featuring both free and premium options, the service also includes mood-based programming and supplemental content including music news, videos, concert updates and more.



On Device Music

DTS Play-Fi puts your mobile music collection at your fingertips, automatically finding and indexing the songs stored on your device. You can browse and stream by album, artist or genre, and even use your existing playlists. DTS Play-Fi supports local files in multiple formats, from MP3 all the way up to premium CD and lossless quality encoding. Free, with no subscription required.



Media Server

Got a hard drive full of music? Avid digital collectors can access and stream from media servers using DTS Play-Fi. The system automatically discovers and indexes music from DLNA and UPnP servers on your network. You can select and stream files in multiple formats via DTS Play-Fi, including premium tracks encoded at CD quality or even 24-bit/192kHz lossless content. No subscription required.



Napster

Napster integrates the heritage of streaming market pioneer Rhapsody into its premium, ad-free on-demand service. With 30 million tracks, instant playlist creation, and anytime, anywhere access, Napster is justifiably popular on multiple continents with millions of subscribers.



Pandora

Listen free to music you'll love, as Pandora's streaming service evolves with your tastes. Give songs a thumbs up or down, and your stations become more personal the more you listen. Enjoy the service at no charge with ads, upgrade to Pandora Plus for commercial-free streaming, or try Pandora Premium to add on-demand features and premium sound quality to your experience.



Qobuz

Based in France, Qobuz was founded and built around a premium audio quality experience. It boasts 70,000 albums available for streaming at 24/192, with many more streaming at 16/44 CD quality. The service also features in-depth artist profiles and editorial content.



QQMusic

China's largest music streaming service offers tens of millions of tracks and thousands of radio stations to its 400 million monthly active users. With free and premium tiers, and both local and international content, QQ Music is a dominant force in music listening in China.



SiriusXM

With over 150 channels of commercial-free music plus sports, talk, comedy, entertainment, news and more, it's no wonder that Sirius XM is one of the most widely used premium streaming services in North America. It's a snap to go from listening in your car to listening at home with DTS Play-Fi.



SoundMachine

Business never sounded so good! Whether it's in an office or a restaurant, a retailer or a hotel, background music enhances both the customer and the employee experience. Hundreds of stations and millions of songs, including the ability to create artist stations, so you can design the perfect sound for your brand. Fully licensed for business environments.



Spotify

Spotify transformed music listening forever when it launched in Sweden in 2008. Discover, manage and share over 50m songs for free, or upgrade to Spotify Premium to access exclusive features including offline mode, improved sound quality, Spotify Connect and ad-free listening. Today, Spotify is the most popular global audio streaming subscription service with 217m users, including 100m subscribers, across 79 markets. We are the largest driver of revenue to the music business today.



The Spotify Software is subject to third party licenses found here:

www.spotify.com/connect/third-party-licenses.

Use your phone, tablet or computer as a remote control for Spotify. Go to spotify.com/connect to learn how.



Tidal

High Fidelity Music Streaming is Tidal's hallmark. Every track on the service streams in premium audio format, with most in lossless CD quality or above. The service also boasts many exclusive new releases, artist-curated stations and in-depth features designed to complement the music offerings. Available to DTS Play-Fi users in the US and more than 50 other countries.

In addition to the support listed above, it also supports music services such as BBC, ESPN RADIO, HD tracks, NPR, tunein and so on, and there will be more music platforms involved in the development.

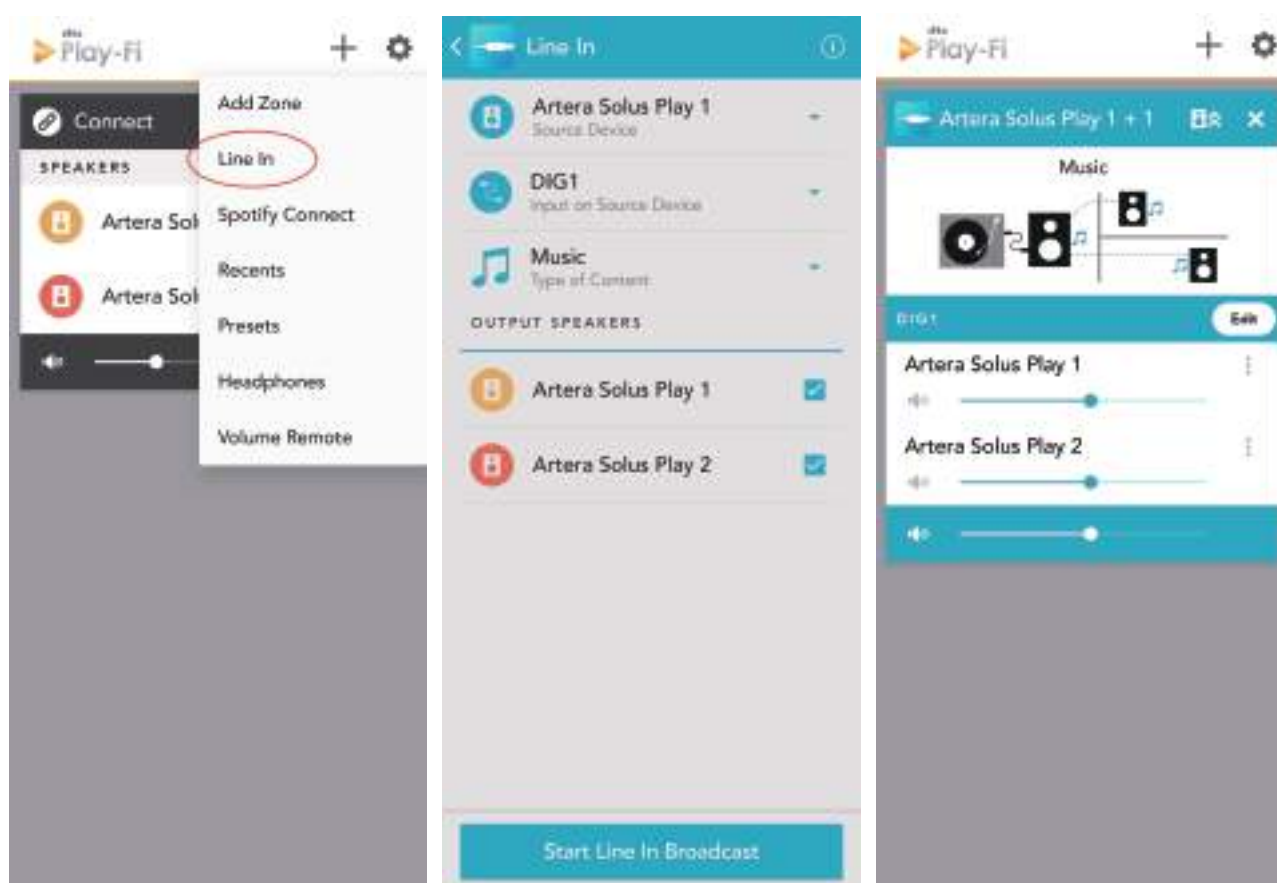
DISCLAIMER: Not all music services are available in all regions and countries.

Line In Mode

The Artera Solus Play supports wireless broadcasting of any of your music source inputs to other DTS Play-Fi audio solutions on your network. For instance, you can stream the turntable input from your Artera Solus Play to other DTS Play-Fi wireless speakers or streamers via the app. Perfect for a multi-room home audio solutions.

To activate this mode simply click the icon "+" on the top right corner of DTS Play-Fi App, select "Line In", then select the source unit, source channel and music genre. Finally select the secondary audio output device to which you wish to broadcast and click "Start Line In Broadcast" to play.

Note: there should be at least 2 or more than 2 units supporting the DTS Play-Fi system to supporting to use this function. The Broadcast mode can support all the input channels except Bluetooth functionality.

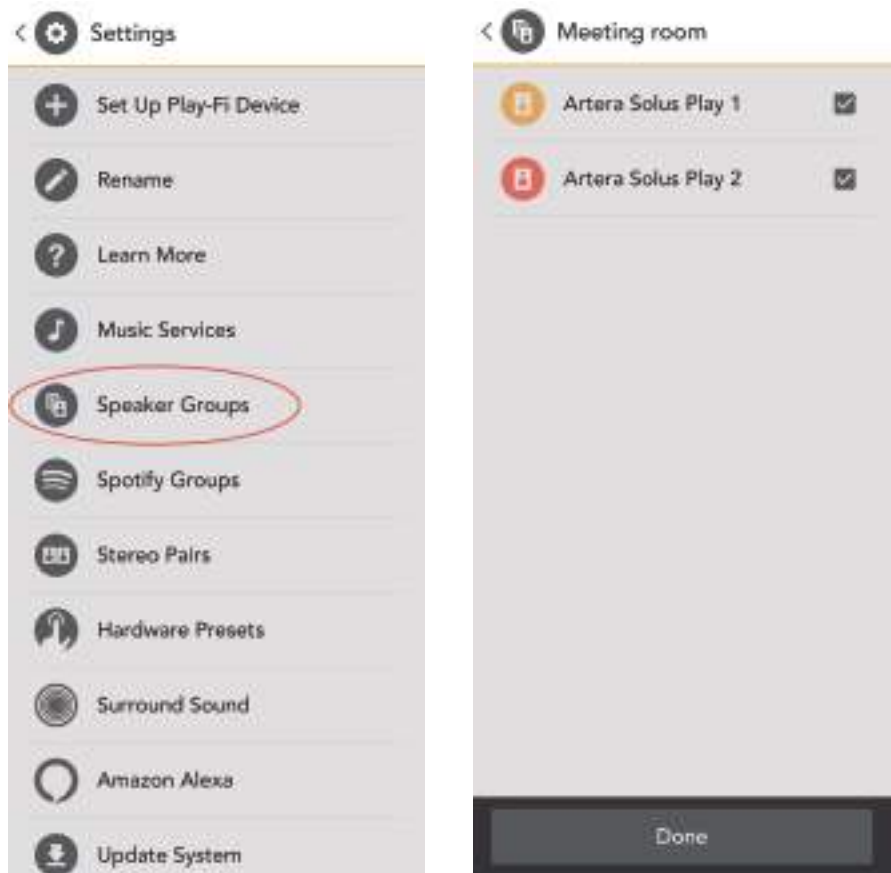


Speaker Groups

To stream music from Artera Solus Play to multi-room Devices such as DTS Play-Fi Speakers, open the DTS Play-Fi APP, find the Device or Speaker, give it a name and then add it.

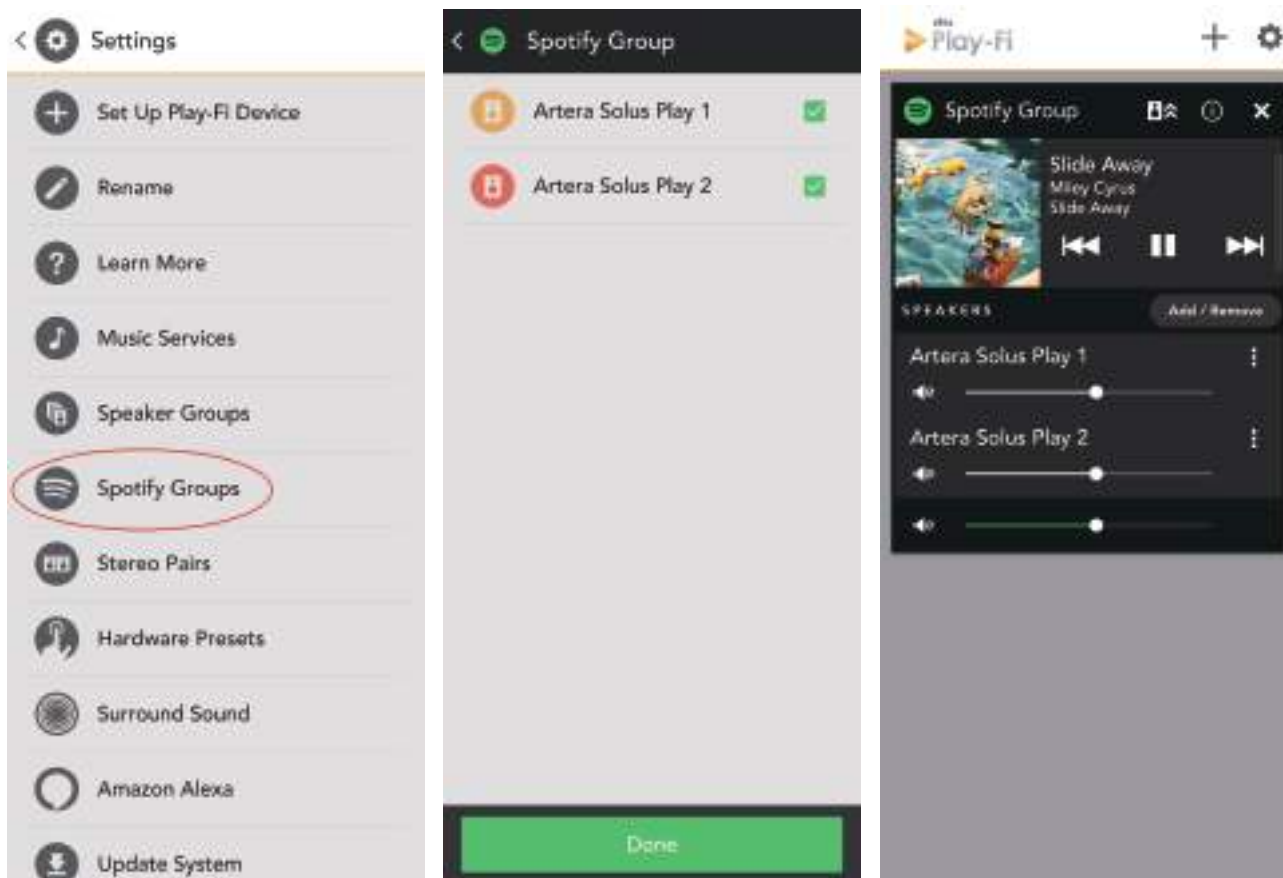
To delete the Device or Speaker, just click on the right side of the Device name and then delete.

Currently it is not recommended to wirelessly stream Hi-Res audio to speakers if you want stable, uninterrupted playback.



Spotify Group Setup

Open the Set Up of the DTS Play-Fi app and click the Spotify Group. Create a new group and name for it, then select any Play-Fi products you want to add into this group (on the right side). Any speakers that can't be added to the Spotify Group will show in grey. Any speakers that can't be joined to a Spotify Group will be greyed out. Once you're satisfied, head to the Spotify app to start streaming.



Surround Sound

So far, Artera Solus Play cannot support the play of "Surround Sound". For the common problems in utilization and fault diagnosis, you can open the APP settings to find the "Fault diagnosis", then enter the DTS Play-Fi website knowledge base which has the detailed information.

Update System

If there is an update available, click "Update System" and the process will carry on automatically. Click "About", you can see the DTS Play-Fi's APP version and the status of network connection, IP address and versions of the module software and MCU. For 'Advanced Settings' you can choose from various options - the default mode is recommended.

DTS Play-Fi Windows Application

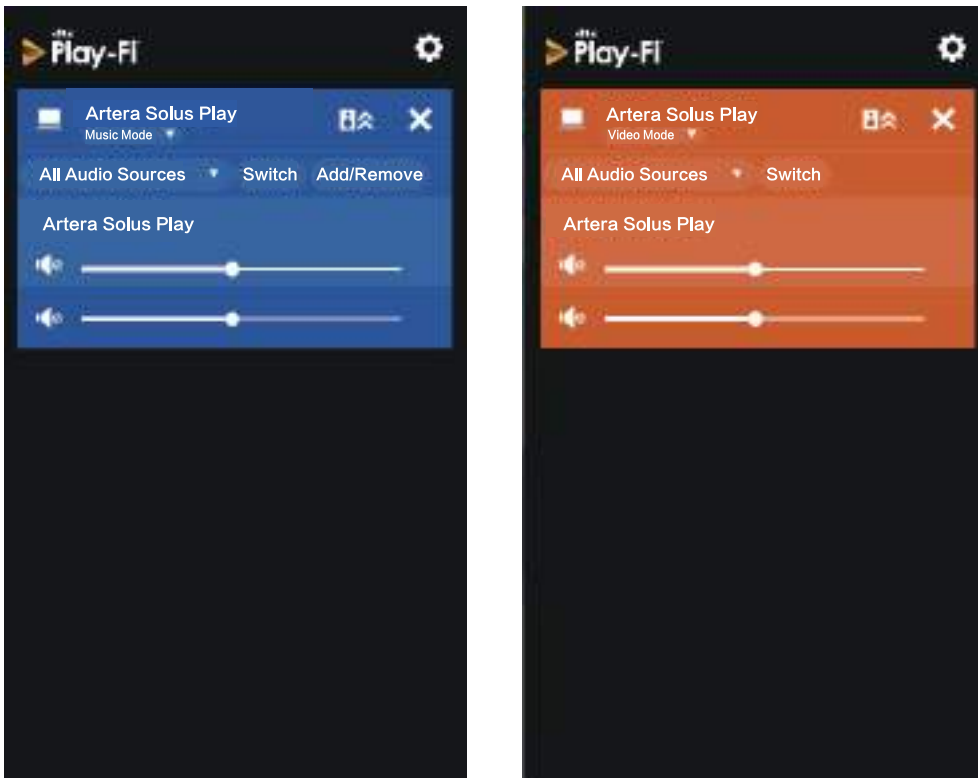
With your PC running Windows 7, 8, 8.1 or 10, the DTS Play-Fi Windows app allows you to stream from any source on your PC (apps, services or Web based) including Spotify, Google Play, iTunes, Xbox Live and more.

Music mode: the free version of the Windows app defaults to Music mode, then select the Artera Solus Play to play.

Video mode: allows you to sync the audio from any video, whether from a movie file or YouTube, to any one Play-Fi device on your network.

To use Video mode upgrade your app to the Play-Fi HD version. Click the option 'Video mode' then select the device to play.

Play-Fi HD is the only Wi-Fi streaming solution to include advanced codecs and proprietary QoS (Quality of Service) technology. That means audio is delivered with astonishing accuracy, even in the busiest network conditions.



Altering the Display Brightness

Short press the Display key on the handset, the word “Display Off” appears briefly on screen and the display will revert to off.

Short press the Display key on the handset again, the word “Display On” appears briefly on screen and the display will revert to on.

There are 8 levels of brightness available. Press and hold the Display key on the handset, the word “Brightness Level 8” appears briefly on screen, short press the Display key on the handset to repeatedly alter the level from 1-8.

The Brightness level will be retained on Artera Solus even when it enters Standby but not Power Off.



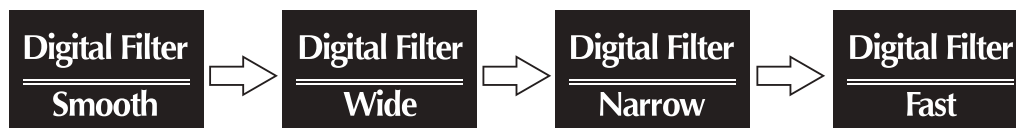
MENU SETTING

Digital Filter (digital inputs only)

The Artera Solus Play offers a choice of filters to optimise playback on different devices, resolutions and to tailor the sound to fit your personal taste.

There are 4 filter choices: Fast, Smooth, Wide and Narrow. The default digital filter for the Artera Solus Play is “Smooth”. Press and hold the Prog key on the handset to enter the Menu options then toggle through using the ◀◀/▶▶ the menu to select ‘Digital Filter’.

Toggle through the different settings and use the ▶|| button to select your filter of choice.



The Digital Filter state will be retained on Artera Solus Play even when it enters Standby or Power Off.

Filter Characteristics:

Smooth: The ‘Smooth’ filter is a digital filter which optimum sampling theory and is designed for near perfect technical response in the frequency domain. It’s quite useful for simpler acoustic recordings as it sounds more natural. The filter has a slightly lower bandwidth but superior rejection of out of spectrum noise and thus has a very clear, smooth open sound.

Wide: The ‘Wide’ filter has a gentle rate of attenuation, minimum ‘time-domain ringing’, minimal out of spectrum noise and thus is quite useful for high sample rate (96kHz and above) files. It has a very ‘clean’ sound, even if it doesn’t have the transient impact of ‘Fast’.

Narrow: The ‘Narrow’ filter typifies industrial standard characteristics (-6dB at 1/2 Fs with significant time-domain ringing) and is included here for comparison purposes). This filter has a high jitter tolerance.

Fast: The ‘Fast’ filter exhibits no ringing – the transient nature of the music is preserved. This type of filter has a purity and ‘naturalness’ to the sound quality.

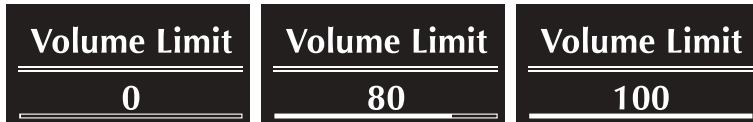
DSD Bandwidth

The DSD Bandwidth can be widened to suit high performance hi-fi equipment and particular DSD audio files.



Volume Limit

For protection of equipment and other uses, a volume limit can be applied between 0 - 100.



Gain

The Output Gain feature applies an offset value (adjustable between -8dB to +8dB) to the volume control.

The offset allows the volume control to be used in its optimal range (in terms of step resolution), accommodating the use of various types of loudspeakers with different sensitivity levels.



Balance

Balance of left and right channels can be adjusted.



AvDir(AUX2)

AV Bypass mode for AUX2, the gain of the AUX2 audio path is set to fixed level output (0dB).

This is for use with sources with built-in volume control such as AV processors.



Auto Standby

Artera Solus Play has three standby modes, editable via the Menu

Auto Standby Never: Artera Solus Play will only enter standby through user control

Auto Standby 20 Minutes: If the CD is stopped for 20 minutes, or if there is no input signal for 20 minutes, the Artera Solus Play will enter standby.

Auto Standby 1 Hour: If the CD is stopped for 1 hour, or if there is no input signal for 1 hour, the Artera Solus Play will enter standby.



Brightness

The Artera Series brightness can be adjusted from a low level to a bright level, adjustable in 8 increments.



Default Channel

Any channel on the Artera Solus Play can be set as the default channel. Additionally, this can be set, using the 'Recall Last Input' feature.



CD Time

Users can select the track time display in four formats. 'Track Time Forward' shows the individual track playback time. 'Track Time Remain' displays individual track time remaining. 'Disc Time Forward' displays the playback time of the whole CD. 'Disc Time Remain' displays the remaining time left on the whole CD.



Factory Reset

The Artera Solus Play can be restored to factory default settings. To do so, toggle through the menu options using the ◀◀/▶▶ keys. Confirm the Factory Reset ▶▶.



Firmware

The final menu option displays the current firmware installed on the Artera Solus Play.



SPECIFICATIONS

(All measurement made with 230V supply)

Model	Artera Solus Play
General Description	CD Player, DAC, Pre-Amp with Integrated amplifier
Key Technology & Features	DSD (up to DSD256 Compatible) / Bluetooth (aptX) DTS Play-Fi Technology
Audio File Formats	ALAC, WAV, FLAC, AIFF, WMA, MP3, AAC, AAC- HE, AAC+, DSD64, DSD128, DSD256
D/A Converter	ESS ES9018 32bit DAC
USB Input	USB B (PC / MAC)
Digital Audio Inputs	2 x Optical TOSlink, 2 x RCA (DIG1, DIG2)
Digital Audio Outputs	1 x Optical TOSlink, 1 x RCA (DIG)
Analogue Inputs	2 x RCA (AUX1, AUX2)
Analogue Outputs	2 x RCA, 2 x Balanced XLR, 6.3mm Headphone Jack
Speaker Outputs	1 Pair Speaker Terminals
Sample Rate (USB B)	44.1kHz, 48kHz, 88.2kHz, 96kHz, 176.4kHz, 192kHz, 384kHz
Sample Rate	44.1 - 192kHz (Digital Inputs / Outputs)
Standby Power Consumption	<0.5W
Pre-Amplifier Section	
Output Level (1kHz) Variable Output	0 - 4 Vrms (Pre Outputs) 0 - 8 Vrms (Balanced Outputs)
Frequency Response	20Hz-20kHz, 1kHz (± 0.2 dB)
Total Harmonic Distortion	<0.002% (20Hz-20kHz)
Signal to Noise Ration(S/N)	>103dB (1kHz) >110dB (A Weighted, 1kHz)
Channel Separation	>100dB (1kHz)
Power Amplifier Section	
Rated Power Output	2 x 75W (8 Ω)
Frequency Response	± 0.5 dB (20Hz-20kHz, 1kHz)
Total Harmonic Distortion	<0.009% (10W 20Hz-20kHz)
Signal to Noise Ration(S/N)	>100dB (A Weighted, ref.75W)
Channel Separation	>82dB (A Weighted, ref.1W)
Dynamic Range A-wtd	>98dB
Power Requirement	220V-240V~50-60Hz (depending on region) 100V-120V~50-60Hz
Dimensions & Weight	
Dimensions (Unpacked)	320 x 320 x 105mm
Dimensions (Packed)	465 x 465 x 220mm
Net Weight	11.5 kg
Gross Weight	13.8 kg

CARE AND CLEANING

While cleaning is in progress the AC power cord must be unplugged from the AC power supply socket.

The surface of the equipment should be cleaned with a damp soft cloth. Solvent based cleaning materials should not be used as they may damage the finish.

If you have any queries regarding the use of QUAD equipment, consult your dealer.

WARRANTY

QUAD equipment is guaranteed against any defect in material and workmanship for a period of one year from the date of purchase. Proof of purchase is required for warranty claims.

Please complete and return the enclosed Warranty Registration Form. Within the warranty period QUAD will undertake replacement of defective parts free of charge provided that the failure was not caused by misuse, accident or negligence. Your statutory rights within the territory in which you purchased the equipment is not affected by this warranty.

QUAD carries out regular reviews and reserves the right to adjust the specifications and performance from time to time.

SERVICING

Product service enquiries should, in the first instance, be referred to the supplying dealer. If you need to return your equipment for servicing we recommend that it is shipped in its original packing.

In cases of difficulty or for other product enquiries please contact that appointed QUAD distributor for your country. Principal Service Centre addresses and contact numbers can be found below.

For information of worldwide authorized service centres, please read worldwide distributor list on the QUAD website: www.quad-hifi.co.uk.

INTERNATIONAL SERVICE CENTRE ADDRESS

IAG House, 13/14 Glebe Road, Huntingdon, Cambridgeshire, PE 29 7DL, UK

Tel: +44 (0) 1480 452561 Email: service@quad-hifi.co.uk

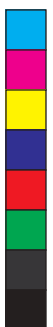


Correct Disposal of this product. This marking indicates that this product should not be disposed with other household wastes throughout the EU. To prevent possible harm to the environment or human health from uncontrolled waste disposal, recycle it responsibly to promote the sustainable reuse of material resources. To return your used device, please use the return and collection systems or contact the retailer where the product was purchased. They can take this product for environmental safe recycling.









QUAD

IAG House, 13/14 Glebe Road, Huntingdon, Cambridgeshire, PE29 7DL, UK
Tel: +44(0)1480 452561 Email: service@quad-hifi.co.uk <http://www.quad-hifi.co.uk>
IAG reserves the right to alter the design and specifications without notice. All rights reserved © IAG Group Ltd.
QUAD is a member of the International Audio Group.

