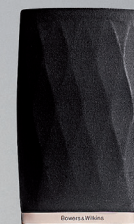


## Bowers & Wilkins

Company founder John Bowers defined the perfect loudspeaker as one able to deliver sound to the listener exactly as it was recorded, and that's what the Formation Suite does – wirelessly. Using the signature technologies found across the Bowers & Wilkins range all the way up to the flagship 800 Series Diamond, Formation is designed to deliver superlative sound and ultimate fidelity – whatever you choose to play and wherever you want to play it.

THE HIGHEST FORM OF SOUND.



Wireless audio systems are the new standard for convenience and whole-home hi-fi connectivity. However, wireless audio can often mean compromises, such as lower quality and breaks in sound. The Bowers & Wilkins Formation® Suite is the first wireless audio system to live up to our exacting standards of performance. Using a proprietary mesh network, our exclusive Formation® Wireless Technology delivers perfect speaker synchronisation and industry-leading 96kHz/24-bit high-resolution sound for an immersive and seamless high-fidelity soundstage – wirelessly.

## FORMATION DUO

Speakers designed and built to the exacting standards of Bowers & Wilkins – but wireless. Featuring our patented Carbon Dome tweeter-on-top technology for crystal-clear high frequencies and the same innovative Continuum Cone mid/bass driver found in our industry-defining 800 Series Diamond speakers. Duo is available in black or white, and with optional floor stands. The highest form of sound is now available wirelessly.

## FORMATION WEDGE

Featuring legendary Bowers & Wilkins sound and designed with our patented wireless technology, the Formation Wedge is the perfect marriage of function and design. This standalone wireless speaker uses high-performance tweeters, dedicated midrange drivers and an integrated subwoofer. They're all built into a unique, 120-degree cabinet that perfectly angles a full range of components for room-filling stereo sound from a single speaker.

## FORMATION BAR

This powerful, truly immersive soundbar makes the most of your TV and movie sound, thanks to nine optimised drive units including a dedicated centre channel. It also combines our legendary audio quality with wireless streaming flexibility.

## FORMATION BASS

Add rich, deep bass to music and movies with the wireless Formation Bass, combining powerful digital amplification and opposed Dual Driver technology for reduced distortion and accurate, articulate low frequency extension.

## FORMATION AUDIO

Transform your passive system into a multiroom wireless system with Formation Audio. Our proprietary mesh network ensures there are no lags or breaks in sound, while 96kHz/24-bit streaming combines superlative musicality with outstanding resolution.

## FORMATION FLEX

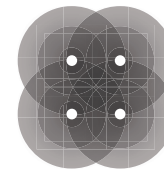
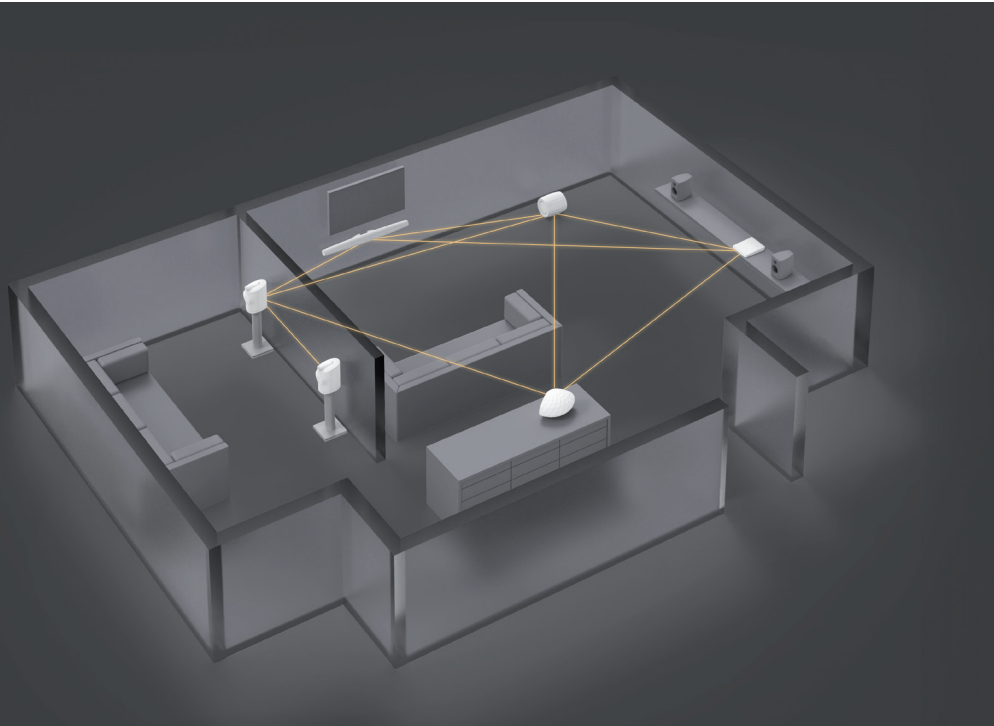
The ultimate in clear, big sound - now in a compact and versatile wireless speaker. Formation Flex packs our 600 Series tweeter and woven glass fibre cone woofer technology into a sleek and compact body. Powerful enough to be used independently or in a pair for stereo sound. Sync it with other Formation speakers to create your perfect home audio system or go all in with the Formation Bar and Formation Bass for a brilliant 5.1 surround sound experience. No matter the configuration, you'll get legendary Bowers & Wilkins sound.

## OUR UNIQUE MESH TECHNOLOGY

At the heart of Formation is Formation Wireless mesh technology, giving you a dedicated wireless network to link the speakers and your music.

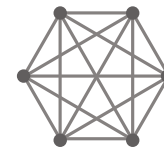
Unlike conventional wireless multiroom speaker systems, which use your existing home Wi-Fi – and are thus prone to poor quality streaming as a result of multiple devices using the same network – Formation Wireless mesh technology uses an entirely separate high-speed wireless network. This allows the transmission of music at up to 96kHz/24-bit quality with extraordinary precision, providing perfect synchronisation between all the Formation speakers.

This precision, giving in-room synchronisation of less than one microsecond, means all your Formation speakers will be perfectly in sync. In busy Wi-Fi environments, such as most modern homes, this robust mesh technology ensures uninterrupted listening even with multiple Formation 'zones', all under the control of a simple app. It's easy to set up and use, and simple to add extra speakers when required, or integrate Formation components with your existing hi-fi system.



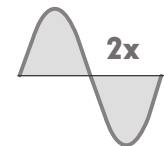
### Perfected Speaker Synchronisation

An industry-defining, completely immersive soundstage enabled by wireless sync between speakers with an accuracy below one microsecond.



### Patented Robust Mesh Network

Developed to run independently from your home Wi-Fi network to ensure high-resolution audio performance throughout your home.



### High Fidelity Streaming

96kHz/24-bit streaming with more than twice the resolution of the leading wireless speaker brand, for the purest experience.

At Bowers & Wilkins we had one guiding principle when we decided to create the Formation® Suite. We had to deliver the category-defining sound quality for which we are rightly famous across the world – but we had to do it wirelessly. The result was several years of intensive research and development, combining Silicon Valley expertise in wireless networking with the world-class expertise of our acoustic research team, the engineers responsible for designing loudspeakers used in many of the top recording studios. The result is the world's first no-compromise wireless audio system, which delivers the same precise, immersive sound quality as wired hi-fi – the Formation® Suite.

## WHY COMPROMISE?

Having your music available to you in any room of your house shouldn't mean trading sound quality for convenience. That's why the ability to play 96kHz/24-bit high-resolution audio – way beyond CD quality – was a prime design requirement for Formation® Suite. Thanks to fast, high-capacity Formation® Wireless Technology and the use of optimised Bowers & Wilkins drive units with dedicated amplification, Formation is able to deliver audiophile sound quality without wires.

This means you can enjoy every nuance of high-resolution sound and all the dynamics and excitement of your favourite music, without the need to settle for lower sound quality when you're away from your main audio system. Formation delivers all of the music that matters to you, everywhere – wirelessly.

## WHAT SETS FORMATION APART?

Most multiroom audio systems start with one major disadvantage: the home Wi-Fi network. Convenient though it may seem, just consider all the devices fighting for a share of its bandwidth, from computer and tablets to TVs, lighting, security and heating systems and even smart voice control units.

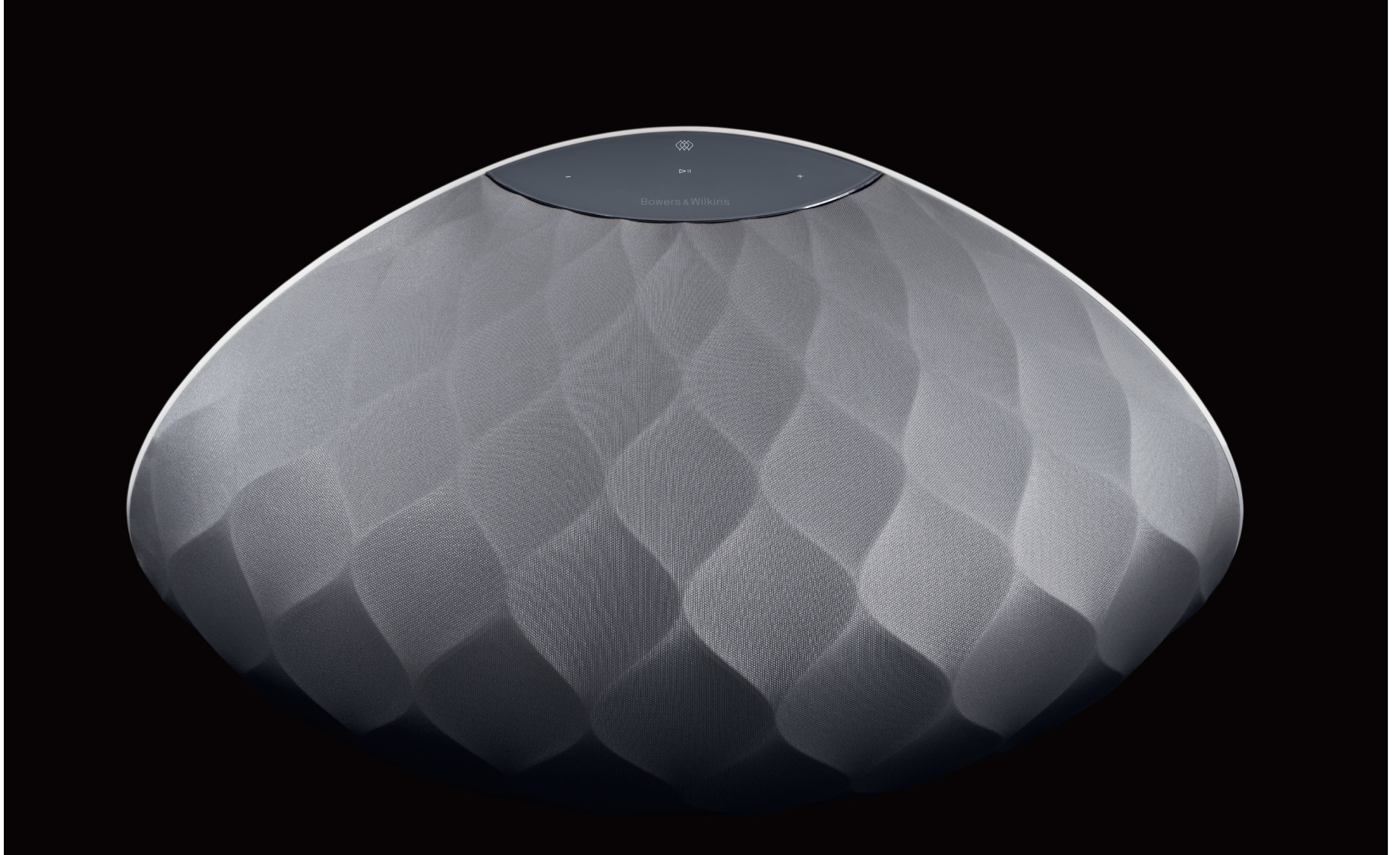
That's why Formation is different: it sets up a dedicated Formation® Wireless Technology 'mesh' network, completely separate from existing Wi-Fi systems, and using intelligent channel-switching to maintain an ideal connection despite any outside interference. All of that just happens automatically when you start plugging in Formation products, allowing high-resolution sound, with speakers perfectly synchronised for a true whole-house hi-fi experience.



## FORMATION DUO

Formation Duo is unmistakably a Bowers & Wilkins speaker design, combining the company's Carbon Dome tweeter, housed in a tweeter-on-top enclosure for the purest high frequencies, with the fast, accurate Continuum Cone mid/bass driver originally developed for the 800 Series Diamond range. Add powerful built-in amplification and Formation Wireless mesh technology and you have a distinctive stereo speaker system that brings you as close as possible to the music.





## FORMATION WEDGE

Formation Wedge is a unique solution for those locations where you want room-filling sound, but don't want conventional speakers. This sculptural, elliptical design arranges its drive units – twin Decoupled Double Dome tweeters, twin FST midrange units and a central subwoofer – in a 120-degree arc, delivering a precise stereo image in any room. Not only will Formation Wedge be a real talking point in your home, it also offers legendary Bowers & Wilkins audio quality – wirelessly.

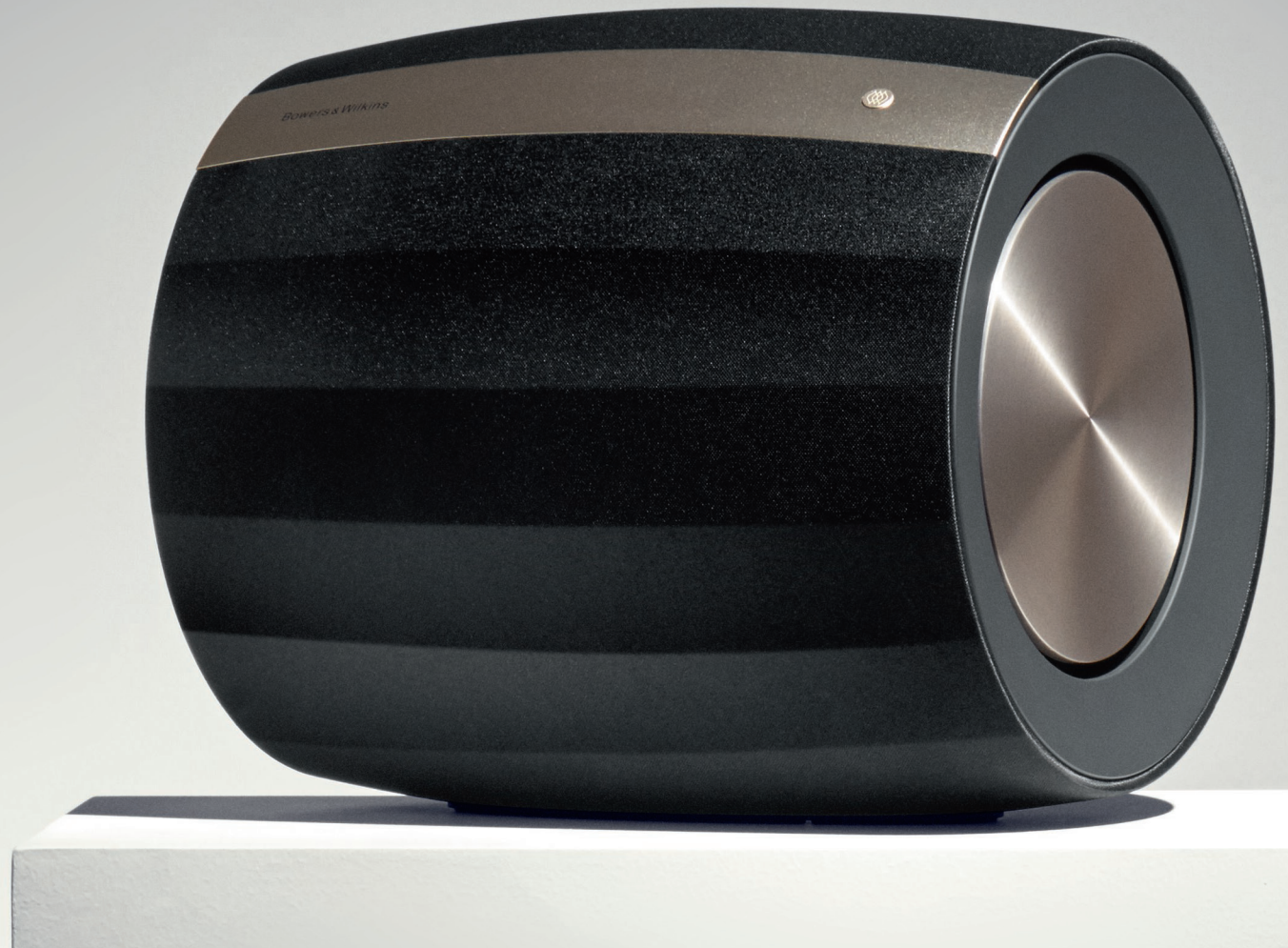


## FORMATION BAR

The Formation Bar is the home cinema solution in the range, connecting to your TV via optical digital and using no fewer than nine drive units, with a dedicated centre channel to focus attention on the screen. Superb Bowers & Wilkins drive units, including the Decoupled Double Dome tweeter from the 600 Series, create a precise, immersive experience with your favourite sports, TV shows, games and movies. Of course, the Formation Bar can also stream music at up to 96kHz/24-bit hi-res quality over the Formation Wireless mesh network.

## FORMATION BASS

Formation Bass is an innovative wireless subwoofer for both home cinema and music use, using powerful digital power amplification with dual-opposed drive units for minimal distortion. It's all under the control of DSP processing featuring Dynamic EQ, analysing its performance in real time for optimal sound quality. Couple this with its elegant cylindrical enclosure, designed for rigidity and reduced resonance, and you have a subwoofer able to play louder and harder without distortion, delivering clean bass you can really feel.



## FORMATION AUDIO

Formation Audio features analogue and digital inputs so you can share your turntable, CD player or any other hi-fi components with any Formation speaker – or indeed all the Formation speakers in your home. Hook up your chosen component and whatever you're playing can be shared around the house – simply, wirelessly, and in high resolution.



Formation Audio is also the link between the Formation Wireless mesh network and the hi-fi you already own, with analogue and digital outputs to feed sound from your network to the inputs on any system, amplifier or receiver. With a simple one-cable hook-up, any existing hi-fi set-up can be fed with sound from your Formation network.



## FORMATION FLEX

Bowers & Wilkins continues to extend its new wireless capabilities with the introduction of the Formation Flex - the highest quality of sound ever from a compact standalone wireless speaker. The Formation Flex features the same tweeter technology found in our award-winning 600 Series speakers, for an amazingly clear sound. The versatile Formation Flex can be used independently; paired with another Formation Flex for stereo sound or used with any other Formation speakers for a whole-home audio system - including the Formation Bar and Bass for an immersive 5.1 surround sound experience. Formation Flex lives up to the exacting high-fidelity standards of Bowers & Wilkins while continuing to redefine wireless audio sound quality. It's true to our ground-breaking heritage and a key part of the Highest Form of Sound™.



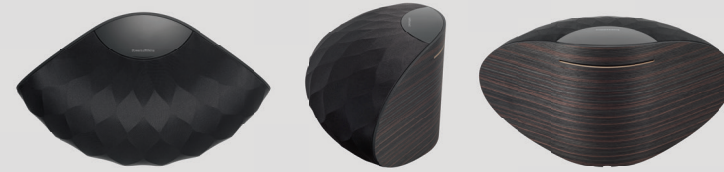


## SPECIFICATIONS



### FORMATION DUO

<b>Description</b>	Wireless High Performance Speaker System
<b>Technical features</b>	Apple® AirPlay 2® technology, Spotify® Connect, Roon Ready, Bluetooth In, Digital Signal Processing (DSP), Digital amplifier, Dynamic EQ
<b>Drive units</b>	1x ø25mm (1 in) Carbon Dome high-frequency 1x ø165mm (6.5 in) Continuum Cone bass midrange
<b>Frequency response</b>	25Hz to 33kHz
<b>Amplifier power output</b>	2 x 125W
<b>Input voltage</b>	100V - 240V - 50/60Hz
<b>Power consumption</b>	Below 6 Watts (Sleep)*
<b>Connections</b>	Network (RJ45 Ethernet/Wi-Fi), USB - service only
<b>Bluetooth</b>	Bluetooth® v4.1, Class 2, aptX HD, AAC, SBC
<b>Dimensions</b>	Height: 395mm (15.6 in), width: 197mm (7.8 in), depth: 305mm (12 in)
<b>Weight</b>	10.6kg (23.4 lb)
<b>AirPlay 2 compatibility</b>	iPhone, iPad, and iPod touch with iOS 11.4 or later, Apple TV, 4K or Apple TV (4th Generation) with tv OS 11.4 or later, Mac or PC with iTunes 12.8 or later



### FORMATION WEDGE

<b>Description</b>	Wireless Music System
<b>Technical features</b>	Apple® AirPlay 2® technology, Spotify® Connect, Roon Ready, Bluetooth In, Digital Signal Processing (DSP), Digital amplifier, Dynamic EQ
<b>Drive units</b>	2 x 25mm (1 in) Decoupled Double Dome tweeter 2 x 90 mm (3.5 in) FST midrange 1 x 150mm (6 in) subwoofer
<b>Frequency response</b>	35Hz to 28kHz
<b>Amplifier power output</b>	2 x 40W (tweeter) 2 x 40W (midrange) 1 x 80W (subwoofer)
<b>Input voltage</b>	100V - 240V - 50/60Hz
<b>Power consumption</b>	Below 6 Watts (Sleep)*
<b>Connections</b>	Network (RJ45 Ethernet/Wi-Fi), USB - service only
<b>Bluetooth</b>	Bluetooth® v4.1, Class 2, aptX HD, AAC, SBC
<b>Dimensions</b>	Height: 232mm (9.1 in), width: 440mm (17.3 in), depth: 243mm (9.6 in)
<b>Weight</b>	6.5kg (14.3 lb)
<b>AirPlay 2 compatibility</b>	iPhone, iPad, and iPod touch with iOS 11.4 or later, Apple TV, 4K or Apple TV (4th Generation) with tv OS 11.4 or later, Mac or PC with iTunes 12.8 or later





## FORMATION BAR

<b>Description</b>	Wireless Soundbar
<b>Technical features</b>	Apple® AirPlay 2® technology, Spotify® Connect, Roon Ready, Bluetooth In, Digital Signal Processing (DSP), Digital amplifier, Dynamic EQ
<b>Drive units</b>	3 x 25mm (1 in) Decoupled Double Dome tweeter 6 x 65 mm (2.6 in) woven glass fibre cone bass/midrange
<b>Frequency response</b>	40Hz to 28kHz
<b>Amplifier power output</b>	6x 40W
<b>Input voltage</b>	100V - 240V - 50/60Hz
<b>Power consumption</b>	Below 6 Watts (Sleep)*
<b>Connections</b>	Toslink Digital socket Network (RJ45 Ethernet/Wi-Fi), USB - service only
<b>Bluetooth</b>	Bluetooth® v4.1, Class 2, aptX HD, AAC, SBC
<b>Dimensions</b>	Height: 109mm (4.3 in), width: 1240mm (48.8 in), depth: 107mm (4.2 in)
<b>Weight</b>	5.5kg (12.1 lb)
<b>AirPlay 2 compatibility</b>	iPhone, iPad, and iPod touch with iOS 11.4 or later, Apple TV, 4K or Apple TV (4th Generation) with tv OS 11.4 or later, Mac or PC with iTunes 12.8 or later



## FORMATION BASS

<b>Description</b>	Wireless Subwoofer
<b>Technical features</b>	Digital Signal Processing (DSP), Digital amplifier, Dynamic EQ
<b>Drive units</b>	2 x 165mm (6.5 in) long throw bass unit
<b>Frequency response</b>	20Hz to 150Hz
<b>Amplifier power output</b>	250W
<b>Input voltage</b>	100V - 240V - 50/60Hz
<b>Power consumption</b>	Below 6 Watts (Sleep)*
<b>Connections</b>	(RJ45 Ethernet/Wi-Fi), USB - service only
<b>Dimensions</b>	Height: 254mm (10 in), width: 281mm (11.1 in), depth: 260mm (10.2 in)
<b>Weight</b>	12.5kg (27.6 lb)
<b>AirPlay 2 compatibility</b>	iPhone, iPad, and iPod touch with iOS 11.4 or later, Apple TV, 4K or Apple TV (4th Generation) with tv OS 11.4 or later, Mac or PC with iTunes 12.8 or later

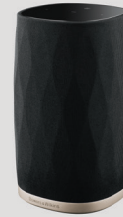
\* Formation products create a mesh network. Each product in this network dynamically chooses the optimal path to route audio-data between products, in order to ensure a robust streaming experience. We have therefore certified Formation products for High Network Availability (HINA) and conform to the appropriate power requirements set out in the ERP directive.

## SPECIFICATIONS



### FORMATION AUDIO

<b>Description</b>	Wireless Audio Hub
<b>Technical features</b>	Apple® AirPlay 2® technology, Spotify® Connect, Roon Ready, Bluetooth In, High performance analogue-to-digital converter (ADC), High performance digital-to-analogue converter (DAC)
<b>Input voltage</b>	100V - 240V - 50/60Hz
<b>Power consumption</b>	Below 6 Watts (Sleep)*
<b>Connections</b>	2 x RCA analogue in/out and Toslink digital sockets Network (RJ45 Ethernet/Wi-Fi), USB - service only
<b>Bluetooth</b>	Bluetooth® v4.1, Class 2, aptX HD, AAC, SBC
<b>Dimensions</b>	Height: 44mm (1.7 in), width: 215mm (8.5 in), depth: 263mm (10.4 in)
<b>Weight</b>	1.0kg (2.2 lb)
<b>AirPlay 2 compatibility</b>	iPhone, iPad, and iPod touch with iOS 11.4 or later, Apple TV, 4K or Apple TV (4th Generation) with tv OS 11.4 or later, Mac or PC with iTunes 12.8 or later

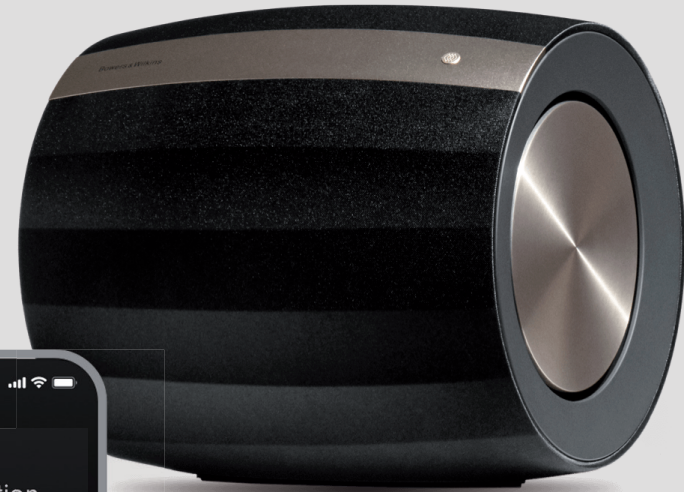
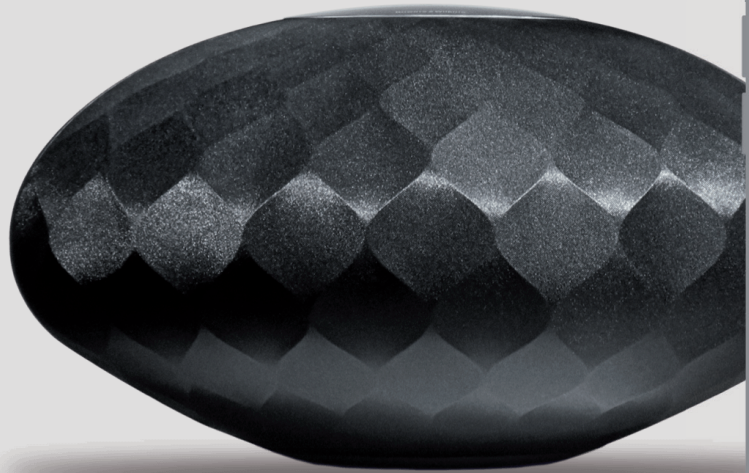


### FORMATION FLEX

<b>Description</b>	Wireless Music Speaker
<b>Technical features</b>	Apple® AirPlay 2® technology, Spotify® Connect, Roon Ready, Bluetooth In, Digital Signal Processing (DSP), Digital amplifier, Dynamic EQ
<b>Drive units</b>	1 x ø25mm (1 in) Decoupled Double Dome tweeter 1 x ø100mm (4 in) woven glass fibre cone bass/midrange
<b>Frequency response</b>	50Hz to 28kHz
<b>Amplifier power output</b>	1 x 50W (tweeter) 1 x 50W (bass/mid)
<b>Input voltage</b>	100V - 240V - 50/60Hz
<b>Power consumption</b>	Below 6 Watts (Sleep)*
<b>Connections</b>	(RJ45 Ethernet/Wi-Fi), USB - service only
<b>Bluetooth</b>	Bluetooth® v4.1, Class 2, aptX HD, AAC, SBC
<b>Dimensions</b>	Height: 215mm (8.5 in), width: 130mm (5.1 in), depth: 130mm (5.1 in)
<b>Weight</b>	2.3kg (5.1 lb)
<b>AirPlay 2 compatibility</b>	iPhone, iPad, and iPod touch with iOS 11.4 or later, Apple TV, 4K or Apple TV (4th Generation) with tv OS 11.4 or later, Mac or PC with iTunes 12.8 or later

## QUICK & EASY SET-UP

The Bowers & Wilkins Home App makes it simple to set-up your first Formation® speaker: just choose which model you're using, tell the app in which room it will be located, and then connect it to the network. Adding more Formation® products is just as simple, with the app 'walking you through' the process, so you can quickly set up a whole-home high-resolution wireless audio system.



As well as streaming your own music stored on a computer or NAS drive on your network, Formation® offers a wide range of online streaming possibilities. You can play music directly from portable devices using AirPlay 2 or Bluetooth, use Formation to browse and play music from Spotify, or integrate a Formation® system with Roon, giving access to Tidal and Qobuz high-resolution music, along with a world of Internet radio content.



Compatible with:



