

VOICES OF RAPTURE



Voices Of Rapture is our premier operatic solo vocal collection for Kontakt Player, featuring 4 outstanding singers covering the classical soprano, alto, tenor and bass ranges. This definitive compilation of our popular Voices Of Rapture series includes a full selection of fundamental chromatic articulations like true legato vowel sustains, single and multi-syllable staccatos and Latin chanting sustains, with individual solo and combined ensemble quartet presets. It also comes packed with thousands of beautifully dynamic live performance phrases in various keys and tempos, with your choice of Pure Vowel, French, Latin and even Humming and

Whistling categories. The Phrase presets are equipped with real-time step-sequencing, tempo control, phrase editing and other control features for maximum flexibility and intuitive playability.

Together with Nichole Dechaine (Soprano), Kindra Scharich (Alto), Brian Thorsett (Tenor) and Joseph Trumbo (Bass), we captured a grand total of nearly 50 hours in our studio and carefully distilled it into this extraordinarily playable virtual instrument library for the Kontakt Player and Komplete Kontrol platforms. With a clean and simple interface, pristine fidelity and excellent vocal performances, Voices Of Rapture is your new go-to for classical and cinematic lead vocal arrangements.

We rerecorded each vocalist completely dry in our state-of-the-art isolation booth with pristine Sound Devices preamps and Neumann studio microphones for fidelity and tone that you can count on. Each singer is available in their purest form so you can apply any reverb impulse or FX chain you desire to simulate any acoustic environment you need.

You'll also find dozens of uniquely creative sound-designed atmospheric synths, drones and soundscapes that we've re-synthesized from these voices. They're perfect for underscoring, reinforcement and ambient arrangements. Along with our full FX rack panel, they offer you nearly endless creative possibilities.

All of this content is wrapped in a powerful and flexible user interface to allow for easy sound-shaping and phrase sequencing. Also included is our new modular FX rack which lets users not only select any of Kontakt's built-in effects but also where in the FX chain they go.

This library has been designed for Native Instruments' free **Kontakt Player** engine for VST, AU and AAX plugin standards. It is also compatible with the Komplete Kontrol software platform and S-Series Light-Guide keyboards. It requires either the free Kontakt Player or the full retail version of Kontakt, versions 5.6.8.

SOUNDIRON

VOICES OF RAPTURE

Fully deep-sampled SATB Operatic Solo Vocal Collection

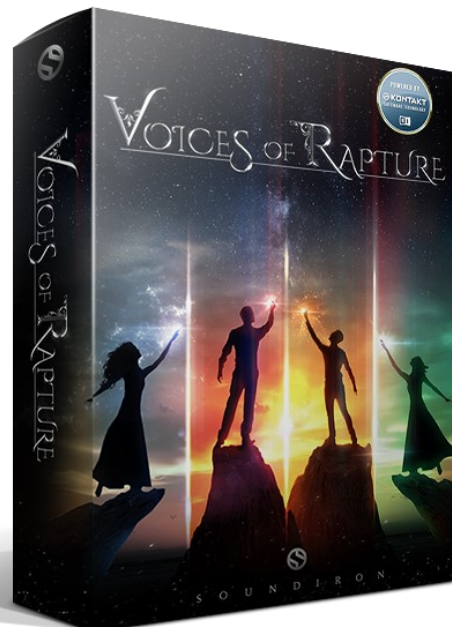
- 61 powerful Kontakt Player .nki instrument presets
- 17,310 Individual Samples
- 13 GB Installed (17+ GB wav source)
- True Legato
- Live Phrases
- Vowel & Latin Sustains
- Vowel & Latin Staccatos
- Vocal Effects
- Phrase Sequencer
- Modular Rack Multi-FX, including convolution reverb with dozens of Room, Hall and Special Effect Acoustic Environments

Note: Native Instruments Kontakt Player or Kontakt (full version) required, version **5.6.8** or later. Windows 7 (or later) or OSX 10.9 (or later) is required. Complete Kontrol required for NKS features. S-Series Keyboard required for Light-Guide features.



TABLE OF CONTENTS

INTRODUCTION - Pages 1 - 2
OVERVIEW - Page 3
SYSTEM REQUIREMENTS & INSTALLATION - Pages 4 - 5
MAIN CONTROLS - Page 6
ENSEMBLE CONTROLS - Page 7
ENSEMBLE MIXER - Page 8
PHRASE CONTROLS - Page 9
PHRASE SEQUENCER - Page 10
FX RACK - Pages 11 - 15
LICENSE AGREEMENT - Page 16
ABOUT THE PERFORMERS - Pages 17
GALLERY - Pages 18
CREDITS - Page 19



VOICES OF RAPTURE

SOUNDIRON



System Requirements

This library requires Native Instruments **Kontakt Player version 5.6.8 or later**, or the full retail version of **Kontakt version 5.6.8 or later**. The sample files are compressed to lossless 48kHz and 24 bit NCW audio format. Please read all instrument specs and software requirements before purchasing this or any other Soundiron products. **You must have at least Windows version 7 or later, or Apple OSX 10.9 or later.**

Many instrument presets in this library are extremely system resource intensive. We highly recommend that you have a 64-bit operating system (Windows or OSX) with *at least* 3GB of system ram, a multi-core cpu and a 7200 rpm SATA or SSD hard disk before purchasing this particular Soundiron library. Large sample sets like those found in this library may load slowly and may cause system instability on some older machines.

Fidelity

This library was recorded at 48kHz / 24bit. This was recorded in a dry recording studio using Sound devices preamps and Neumann large-diaphragm studio microphones. Natural sonic impurities from body and clothing movement by the performer sounds may be present in some samples. Because of the physical nature of harp playing, these performance sounds are natural and unavoidable. Therefore, please keep in mind that this library isn't designed to provide perfectly sterile result. Our goal is to preserve and accentuate the natural live qualities in our instruments without overly modifying the recordings.

Kontakt Preset Loading

Once installation is complete, you can browse and load the included .nki presets using the Libraries window, Files Browser or Quick Load Window in Kontakt. You can load Kontakt as a virtual instrument plugin inside your host sequencer or as a stand-alone application.

Control Parameter Automation

Most knobs, buttons and sliders in this library can be automated by midi continuous controller or by using host automation envelopes in your DAW. To assign any interactive control knob, button or the Sound Selection Menu to a midi CC, you can right-click the control (command-click on OSX) and select the "Learn MIDI CC# Automation" button that appears. Then move your desired midi hardware control to link it.

To assign the control to a host automation ID, use the "Auto" automation routing window in the left side Kontakt browser area to drag-drop an automation routing number onto the control you wish to lock it to.



Library Activation

1. If you don't already have Kontakt 5 or the Kontakt 5 Player installed, download the Free Kontakt Player (WIN / OSX) from the Native Instruments website:

<https://www.native-instruments.com/en/products/komplete/samplers/kontakt-5-player/>

2. Please download and install the Voices of Rapture library and unpack it completely before trying to install it. You can find full instructions in your download code email and on the manual download page.
3. Now open Kontakt in stand-alone mode. Make sure that you're logged into your computer as full system administrator with full permissions allowed and all OS and Security restrictions turned off. This is necessary to allow Kontakt and the NI Service Center to activate the product. You usually only need to do this the first time you add and activate this Library.
4. Go to the "Libraries" tab in the Kontakt browser window, located in the upper left area of Kontakt window, just to the right of the "files" tab. Now click the "add library" button at the top.
5. Use the browser pop-up to find your installed "Soundiron Voices of Rapture" folder.
6. Once the Voices of Rapture library module loads into the Libraries viewer, look for the "Activate" button on the right side of it. Press the button to launch the Service Center and register and activate the library.
7. Find the Soundiron Voices of Rapture library listed in the "Activation" tab in the Service Center and enter the serial number you received in your download email. Then press the green "Activate" button at the bottom. Once that's complete, close the Service Center and restart Kontakt. The library should now be installed and ready to use.
8. Once installation is complete, you can browse and load the included .nki presets using the Libraries, Files, Quickload or Database tabs in the Kontakt Browser, or through the main File load/save menu. Please allow any current preset to finish loading completely before loading a new one.

Trouble-shooting

If you have trouble activating and registering the library, make sure that you have full unrestricted Administrator account permissions to change your system registry. Also check to make sure that your security software is not preventing Kontakt from freely accessing the internet and your registry. You may also need to manually set a full exception and/or special access permissions in your security suite or operating system for Kontakt and the NI Service



MAIN CONTROLS



ARTICULATION DROPDOWN MENU

This dropdown menu is used to select the current active articulation. The articulation list varies depending on the preset, but all nki presets feature this menu.

SWELL

This knob controls the dynamic volume of the instrument. Lower values lean toward the *piano* range of dynamic volume while higher values will make the dynamic *forte*.

ATTACK

This knob controls the initial note attack time. Low values are the natural, recorded attack, but higher values can be used to sweep up in volume over a longer period of time.

OFFSET

This knob controls the sample start offset. Turning the knob up causes the sample playback to start further and further into the sample. This is particularly useful for polysyllabic content.

RELEASE

This knob controls the release fade time. This controls the amount of time it takes for the sound to reach silence once a note is released. Please note that the singers were recorded dry in a booth so there is very little release, however this can still prove useful.

REL VOL (not pictured)

This knob controls the volume of release samples only. Please note that the singers were recorded dry in a booth so release samples are quite short, however this can still prove useful. *Not available in all presets.

RELEASE TOGGLE (not pictured)

This button next to the Rel Vol knob can be used to toggle release sample playback On/Off. *Not available in all presets.

LEGATO TOGGLE

This button toggles Legato On/Off. This allows for melodies to be played seamlessly. *Not available in all presets.

AUTOPAN TOGGLE (not pictured)

This button toggles Autopan On/Off. This randomly pans each note when played simultaneously. *Only available in solo presets.

SPEED

This knob controls speed of legato transitions. Lower values are slower while higher values are faster. *Not available in all presets.

VIBRATO

This knob controls the amount and speed of vibrato. *Not available in all presets.

PLAYBACK MODE

Changes the current playback mode between the following:

- Natural - As recorded
- Sync - Sync'd with current tempo
- Variable - Variable speed controlled with knob

The knob connected to this area controls the playback speed when set to "Variable." *Not available in all presets.

KSW

This controls where on the keyboard the various keyswitches reside.

PURGE/PRELOAD BUTTON

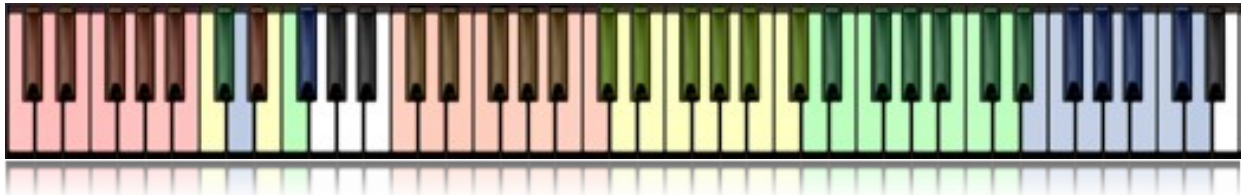
This button controls whether all unused samples are unloaded from memory. When off, samples are not purged and keyswitches are enabled. When on, unused samples are purged and keyswitches are disabled (though the dropdown menu will still function).



ENSEMBLE CONTROLS



Ensemble presets contain all four singers in a single instrument. These have been specially configured and programmed to allow for a full SATB ensemble to be easily playable. Each singer is given a different colored key range within the bounds of which they will sing. The colors are displayed on Kontakt's built-in keyboard view and are shown on Komplete Kontrol keyboard's Light Guide feature. The **Bass** is the **orange** range. The **Tenor** is the **yellow** range. The **Alto** corresponds to the **green** range. And the **Soprano** is the **blue** range.



ENSEMBLE KEYSWITCHES

Ensemble presets also contain a special set of keyswitches not available in other presets. The standard red articulation keyswitches are available, but directly above them is a group of eight special keyswitches. These keyswitches are colored to match the corresponding singer and can be used to dynamically change which singers sound when a key is pressed. This is especially useful when the ranges for each singer are set to overlap.

The first set of four keyswitches can be used to quickly mute the corresponding singer. For example, the first yellow keyswitch will temporarily mute the tenor and prevent him from making sound.

The second set of four keyswitches are for soloing. When one is pressed, only the corresponding singer will make sound. These can be combined to allow for others to sing, making overlapping note ranges more manageable.

Please remember these are temporary keyswitches and do not latch. They must be held down for the duration you want them to have an effect.



ENSEMBLE CONTROLS CONT.



MIXER

The Ensemble Mixer panel can be opened by pressing the “Mixer” button directly under the waveform window.

SECTION BUTTONS

The **Bass**, **Tenor**, **Alto** and **Soprano** buttons can be used to disable the corresponding singer completely. Doing so prevents the singer from making any sound and unloads the related samples from RAM. If one wanted to have only a Tenor and Soprano duet, they could disable the Bass and Alto which would save CPU resources.

VOLUME SLIDERS

These sliders can be used to adjust the volume level of each given singer.

MUTE/SOLO BUTTONS

These buttons, much like the previously described Mute and Solo keyswitches, can be used to mute and/or solo any of the singers. Opposed to the keyswitches however, these are latching and must be pressed a second time to disable their functionality.

PAN SLIDERS

These sliders can be used to control the stereo panorama of each singer, “placing” each of them in a custom way within the stereo image.

HIGH KEY

These values control the highest playable note for each singer’s range. The “High” label itself is a key set button. Pressing it, followed by a MIDI key, will set the “High” value to the note pressed.

LOW KEY

These values control the lowest playable note for each singer’s range. The “Low” label itself is a key set button. Pressing it, followed by a MIDI key, will set the “Low” value to the note pressed.



PHRASE CONTROLS

Phrase presets contain a variety of live performance phrases performed by each singer. These can be manipulated in various ways, including offset, tempo sync'd and sequenced. These presets contain unique controls.



STRETCH

This knob functions as a speed control when “Playback Mode” is set the “Variable.” Lower settings slow playback while higher settings increase it.

X-FADE

This knob functions as a legato speed control. While not truly legato, this knob controls the speed at which phrases are crossfaded between each other.

PITCH

This knob controls the playback pitch of the phrase. Note extreme settings can cause undesirable artifacts.

PITCH KSW

This value determines where the pitch keyswitches lie on the keyboard.



OFFSET

The blue, “O” marker appears in the waveform window when phrases are played back outside of a sequence. This gives a visual indication where in the sample playback will start. This control is tied to the “Offset” knob.



PHRASE SEQUENCER



Phrases can be customized and sequenced in any order a user may choose. Phrases can be played back by pressing the purple key on the keyboard located at **B4**.

CURRENT STEP

This knob indicates and can be used to set the current step in the sequence.

STEPS

This value controls how many steps are in a sequence.

SEQUENCER FLOW

This dropdown controls the direction of sequence playback.

- **Fwd. 1-shot** - Plays sequentially in order forwards so long as the phrase key is held, but will stop when the last step is played.
- **Fwd. Loop** - Plays sequentially in order forwards so long as the phrase key is held, loop back to the start after the last step is played.
- **Fwd. Step** - Plays sequentially in order forwards but will wait to play the next step until the phrase key is released and pressed again.
- **Bwd. 1-shot** - Plays sequentially in order backwards so long as the phrase key is held, but will stop when the first step is played.
- **Bwd. Loop** - Plays sequentially in order backwards so long as the phrase key is held, loop back to the end after the first step is played.
- **Bwd. Step** - Plays sequentially in order backwards but will wait to play the next step until the phrase key is released and pressed again.
- **Random** - Plays the steps back in a randomized order.

STEP OPTIONS

These controls control settings for only the active step in the sequence.

- **START** - Sets the start position for the current step.
- **END** - Sets the end position for the current step.
- **PITCH** - Sets the pitch adjustment for the current step.
- **ASSIGN** - Press this, then one of the blue phrase keys to assign that phrase to the active step.

SAVE

This button opens a file browser and allows users to save off a phrase configuration to an external file.

LOAD

This button opens a file browser and allows users to load a phrase configuration from an external file.

STEP BUTTONS

Each of these buttons represents a step in the sequence. The note displayed corresponds to the phrase that is mapped there, represented by blue keys on the keyboard. Each step can be clicked to make it the active, current step, which will be shown in the waveform window.



START/END MARKERS

These interactive markers appear in the waveform window when a phrase sequence is being configured or when a sequence is being played back. The green "S" markers represents where the sample will start playback. The orange "E" marker represents where playback will stop for the current step. These markers are set on a per-step basis and follow the corresponding knobs in the "Step Options" area. These marker give a visual representation of where a step will start and end, letting users really choose a specific "slice" of a phrase for each and every step.



DSP EFFECTS RACK

The FX Rack tab gives you direct access to most of Kontakt's built-in effects. This panel is accessible in all presets by clicking on the FX Rack tab at the bottom of the instrument UI. Signal flows from left to right in each row and goes down from there. To change the effect loaded into any specific rack module, click on the down arrow menu in its top left corner.



EQ

Power Button - Toggles the effect on and off.

Low, Mid and Hi Frequency Gain - Use these sliders to adjust the level of the low, mid and high EQ bands.

Low, Mid and Hi Frequency - These knobs control the center frequency of the low, mid and high frequency EQ bands.



CHORUS

Power Button - Toggles the effect on and off.

Sync - This button synchronizes the rate to your BPM.

Rate - This controls modulation rate. In synch mode, it changes the time signature by common note divisions.

Phase - This knob controls the phase.



Depth - This knob controls the depth of the chorus sweep.

Mix - This adjusts the wet/dry output mix.

TAPE SATURATOR

Power Button - Toggles the effect on and off.

Gain - This knob controls the amount of gain added.

Warm - This knob allows you to add tonal warmth

Rolloff - This knob controls the high frequency attenuation.



Volume - This knob controls the overall output level.



DSP EFFECTS RACK (continued...)

JUMP

Power Button - Toggles the effect on and off.

Boost - This boosts the incoming signal strength.

Drive - This knob controls the amount of gain added.

Tone - This shapes tone brightness.



Low, Mid & High - These knobs control the low, mid and high frequency gain

Volume - This sets the overall output volume.

DISTORTION

Power Button - Toggles the effect on and off.

Drive - This knob controls the amount of gain added.

Damping - This shapes tone brightness.

Volume - This sets the overall output volume.



DELAY

Power Button - Toggles the effect on and off.

Synch - This button synchronizes the rate to your BPM.

Rate - This controls the echo rate. In synch mode, it changes time signature by note divisions.

Damping - This knob controls high frequency roll-off



Pan - This knob controls the left-right ping pong effect.

Feedback - This knob controls delay loop feedback

Mix - This adjusts the wet/dry output mix.

REVERB

Power Button - Toggles the effect on and off.

Type menu - This menu selects the environment category.

Impulse Menu - This menu selects the impulse response.

Size - This knob controls the reflection decay time.



Lopass - This knob controls high frequency roll-off.

Hipass - This knob controls low frequency cut-off

Mix - This adjusts the wet/dry output mix.

AMP

Power Button - Toggles the effect on and off.

Drive - This knob controls the amount of gain added.

Bass, Mid & Treble - These knobs control the low, mid and high frequency gain

Volume - This sets the overall output volume.



DSP EFFECTS RACK (continued...)

TRANSIENT MASTER

Power Button - Toggles the effect on and off.

Attack - This knob controls the amount of signal boost or cut for the note attack transient.

Sustain - This knob controls the sustain volume following a transient, shaping the fullness of the sound.



Gain - This knob controls the amount of gain added to the output signal.

CABINET

Power Button - Toggles the effect on and off.

Size - Use this knob to adjust the simulated size of the speaker cabinet.

Air - Use this knob to adjust the simulated distance between the speaker and the microphone.



Treble & Bass - Use these knobs to adjust the level of the low and high EQ bands.

Output - This sets the overall output volume.

FILTER

Power Button - Toggles the effect on and off.

Type - This menu lets you select from dozens of low pass, high pass, band pass, notch, ladder and other filter types.

Cutoff/Talk - This controls the filter cutoff and/or peak frequency.



Resonance/Sharpness - This controls the amount of resonance added at the cutoff or peak node.

Gain/Size - This controls signal pass-through level.

FLANGER

Power Button - Toggles the effect on and off.

Synch - This button synchronizes the rate to your BPM.

Rate - Controls mod rate, in milliseconds or note divisions.

Feedback - This adjusts the amount of feedback.



Phase - This knob controls the phase.

Depth - This knob controls the depth of the sweep.

COMPRESSOR

Power Button - Toggles the effect on and off.

Threshold - This adjusts the signal threshold needed before compression is applied.

Ratio - This controls the ratio of gain added or removed based on the incoming signal level above the threshold.

Attack - This controls the compressor attack speed once signal exceeds the threshold



Release - This knob controls the release speed once signal drops below the threshold.

Makeup - This adjusts the wet/dry output mix.



DSP EFFECTS RACK (continued...)

APOCALYPSE MICRO FI

Power Button - Toggles the effect on and off.

Bits - This sets the amount of bit depth reduction.

Sample Rate - This sets the sample rate reduction.

Noise - This knob adds noise to the signal.



Noise - This knob adjusts tone brightness and apparent fidelity.

Output - This sets the overall output volume.

PHASER

Power Button - Toggles the effect on and off.

Synch - This button synchronizes the rate to your BPM.

Rate - Controls mod rate, in milliseconds or note divisions.

Feedback - This adjusts the amount of feedback.



Phase - This knob controls the phase.

Depth - This knob controls the depth of the sweep.

ROTATOR

Power Button - Toggles the effect on and off.

Speed - This button toggles between fast & slow speaker cabinet rotation speeds.

Size - Use this knob to adjust the simulated size of the speaker cabinet.



Air - Use this knob to adjust the simulated distance between the speaker and the microphone.

Output - This sets the overall output volume.

SKREAMER

Power Button - Toggles the effect on and off.

Drive - This knob controls the amount of gain added.

Tone - This sets the overall signal tone.

Bass & Bright - These control low & high frequency gain



Clean - This sets the amount of clean signal pass-through.

Output - This sets the overall output volume.

STEREO MODEL

Power Button - Toggles the effect on and off.

Synch - This button synchronizes the rate to your BPM.

Rate - This controls modulation rate. In synch mode, it changes the time signature by common note divisions.

Phase - This knob controls the phase.

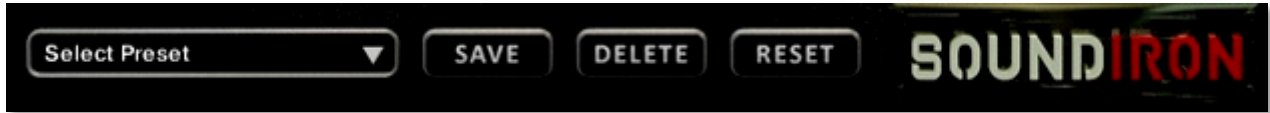


Depth - This knob controls the depth of the chorus sweep.

Mix - This adjusts the wet/dry output mix.



SAVING & LOADING PRESETS



Select Preset - This menu lets you select from any of the factory presets or any presets you've created.

Save - Once you've customized your FX chain, you can save it for later use in this rack by pressing the Save button.

Delete - Use this button to delete the currently selected custom preset. Factory presets can't be deleted.

Reset - This unloads all effects and resets the entire FX rack to its default state.

SOUNDIRON

SOFTWARE LICENSING AGREEMENT

LICENSE AGREEMENT

By purchasing and installing the product, you the Customer accept the following product terms.

LICENSE GRANT

The license for this product is granted only to a single individual user. No unlicensed use is permitted. All sounds, samples, programming, images, scripting, designs and text contained in this product are copyrights of Soundiron, LLC. This software is licensed, but not sold, to Customer by Soundiron, for commercial and non-commercial use in music, sound-effect creation, audio/video post-production, performance, broadcast or similar finished content-creation and production use. Individual license holders are permitted to install this library on multiple computers or other equipment only if they are the sole owner and only user of all equipment this software is installed or used on.

Soundiron LLC allows Customer to use any of the sounds and samples in library(s) that Customer has purchased for the creation and production of commercial recordings, music, sound design, post production, or other content creation without paying any additional license fees or providing source attribution to Soundiron. This license expressly forbids any unauthorized inclusion of any raw or unmixed content contained within this product into any other commercial or non-commercial sample instrument, sound effect library, synthesizer sound bank, or loop or effect library of any kind, without our express prior written consent.

This license also forbids any unauthorized transfer, resale or any other form of re-distribution of this product, or its constituent sounds or code, through any means, including but not limited to re-sampling, reverse engineering, decompiling, remixing, processing, isolating, or embedding into software or hardware of any kind, except where fully rendered and integrated into the finished soundtrack or audio mix of an audio, visual or interactive multimedia production, broadcast, live performance or finished work of sound design,

with a running time no less than 8 seconds in total length. Licenses cannot be transferred or sold to another entity, without written consent of Soundiron LLC.

RIGHTS

Soundiron retains full copyright privileges and complete ownership of all recorded sounds, instrument programming, documentation and musical performances included within this product. All past and future versions of this product, including any versions published or distributed by any other entity are fully bound and covered by the terms of this agreement.

REFUNDS

Downloaded libraries can't be returned, so we do not provide refunds or exchanges. Be aware that as soon as the product has been downloaded from our servers or physically sent to the Customer, it can not be returned, exchanged or refunded.

RESPONSIBILITY

Using this product and any supplied software is at the Customer's own risk. Soundiron LLC holds no responsibility for any direct or indirect loss, harm or damage of any kind arising from any form of use of this product.

TERMS

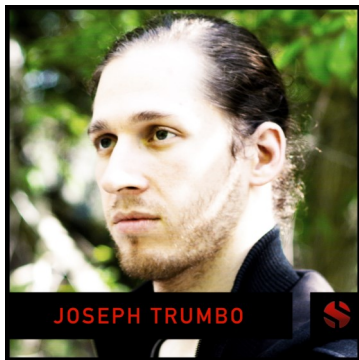
This license agreement is effective from the moment the product is purchased or acquired by any means. The license will remain in full effect until termination by Soundiron, LLC. The license is terminated if Customer breaks any of the terms or conditions of this agreement. Upon termination you agree to destroy all copies and contents of the product at your own expense. All past, present and future versions of this product, including versions sold by companies other than Soundiron LLC, are covered under the terms of this agreement.

VIOLATION

Soundiron LLC reserves the right to prosecute piracy and defend its copyrighted works to the fullest extent of US and International civil and criminal law.

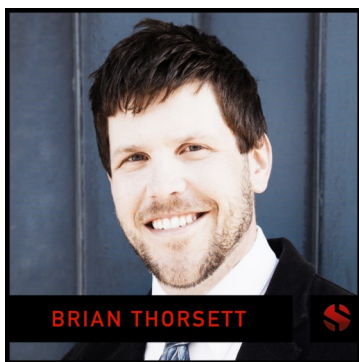


ABOUT THE PERFORMERS



The Bass - Joseph Trumbo

Joseph Trumbo is a young, upcoming operatic bass singer studying at Oberlin College and Conservatory in Ohio. Joseph was a featured soloist in our Mars Symphonic Men's Choir, as part of the Soundiron Olympus Symphonic Choral Collection. He has also performed with the SF Choral Society, Volti, Quire Cleveland, and numerous other ensembles and choral groups.



The Tenor - Brian Thorsett

Brian Thorsett has been seen and heard in over 90 diverse operatic roles. His 2012-3 highlights include the title character in Rameau's Pygmalion, Nemorino in L'Elisir d'Amore and Jupiter in Semele. As a concert singer, Brian retains a stylistically diversified repertoire of over 200 works, which has taken him to concert halls across the US and Europe. He is a graduate of San Francisco Opera's Merola Program, Glimmerglass Opera's Young American Artist program, American Bach Soloists Academy, the Britten-Pears Young Artist Programme at Aldeburgh, England and Music Academy of the West. When not singing, Brian is on faculty at Virginia Tech.



The Alto - Kindra Scharich

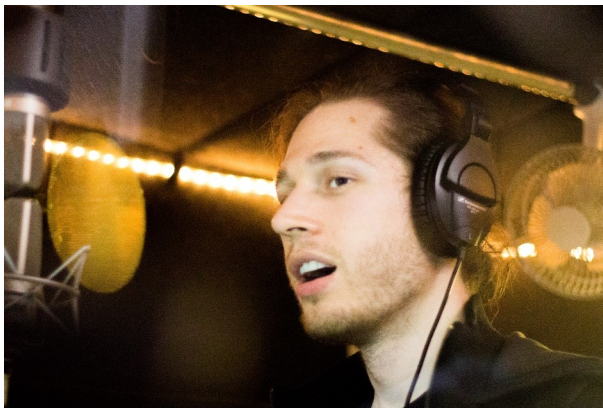
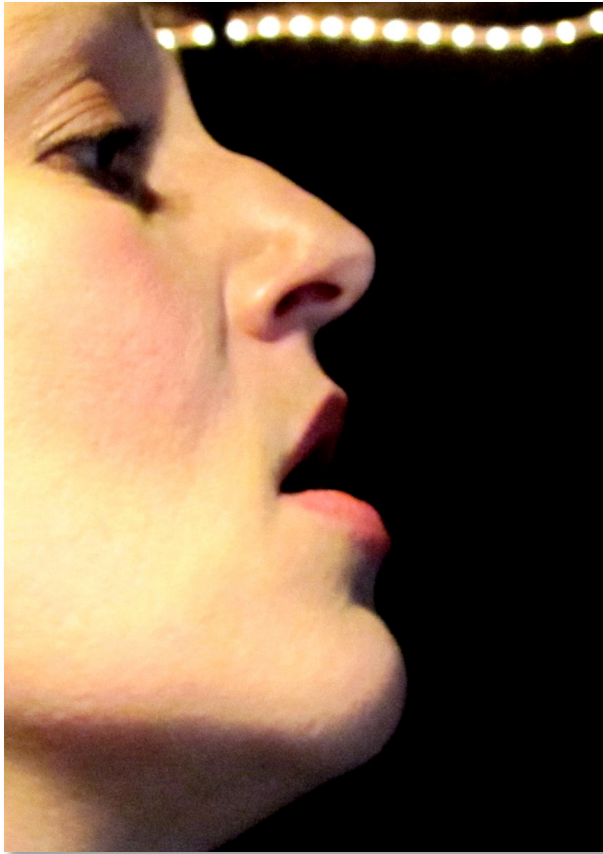
Kindra Scharich studied voice and piano at Eastman School of Music and earned bachelor's and master's degrees in vocal performance at the University of Michigan. She also completed her post-graduate education at San Francisco Conservatory of Music. Kindra has pre-sented recitals for the American Composer's Forum in Los Angeles, Lieder Alive, the Wagner Society Northern California Chapter, and the Yehudi Menuhin Seminar in San Francisco. In the world of opera, Ms. Scharich has sung over 25 roles in the lyric mezzo repertoire, most recently and to much acclaim as Minerva in West Edge Opera's production of Monteverdi's Il ritorno d'Ulisse in patria.



The Soprano - Nichole Dechaine

Nichole Dechaine received her Bachelor of Music degree from the University of Redlands and her Master of Music and Doctor of Musical Arts degrees in vocal performance from the University of California, Santa Barbara. She has performed a variety of leading roles in opera and musical theater productions, and regularly appears as soloist with numerous choirs, orchestras, and ensembles in the US and abroad. She enjoys working with many composers performing their works and recording for film. In addition to performing Dr. Dechaine teaches private voice and music courses at Westmont College and Santa Barbara City College and maintains an active private voice studio.

GALLERY



VOICES OF RAPTURE

SOUNDIRON



THANK YOU!

Soundiron is a virtual instrument and sound library developer founded in 2011. The studio is based in the San Francisco Bay area, owned and operated by a dedicated team of sound artists and programmers. We are driven every day to capture all of the sonic flavors this world has to offer and bring them to you as truly playable and inspiring musical tools. Each library is crafted to deliver profound realism, complete flexibility, exquisite detail and unrivaled acoustic quality. If you enjoy this creation, we hope you'll check out some of our other awesome sound libraries. If you have any questions or need anything at all, just let us know. We're always happy to hear from you at support@soundiron.com!

Thanks from the whole Soundiron team!

CREDITS

Recording

Mike Peaslee, Gregg Stephens, Chris Marshall

Sound Design

Mike Peaslee, Gregg Stephens, Chris Marshall

Editing

Mike Peaslee, Gregg Stephens, Spencer Nunamaker

Instrument Programming

Chris Marshall, Gregg Stephens, Mike Peaslee

Scripting and Systems Design

Chris Marshall

UI Design & Artwork

Constructive Stumblings, Chris Marshall, Gregg Stephens

Documentation

Chris Marshall



Version 1.0 was released on March 23, 2017

WWW.SOUNDIRON.COM

All programming, scripting, samples, images and text © Soundiron 2016. All Rights Reserved.
Soundiron is a Registered Trademark of Soundiron LLC.

VOICES OF RAPTURE

SOUNDIRON

