



roksan.com/atessa-support



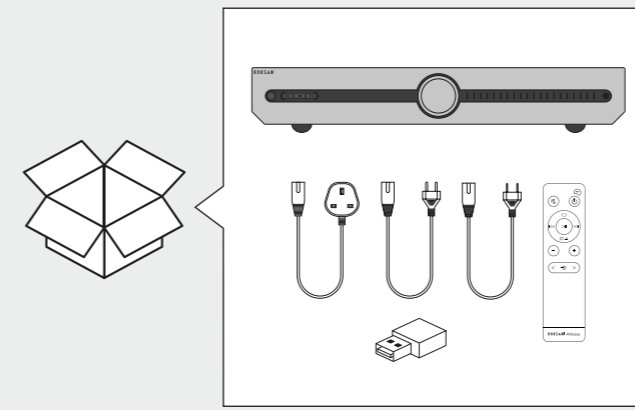
Let's get started

| Dimensions & Material | |
|-------------------------------------|--|
| Dimensions (Inc. Connect & Encoder) | H76 x W432 x D383 mm |
| Dimensions (Exc. Connect & Encoder) | H76 x W432 x D346 mm |
| Weight | 10.2 Kg |
| Construction | Formed plated steel and bespoke machined anodised aluminium front panel |
| Power Amplifier | |
| Power Output (8 Ohms) | 80Wrms Both Channels Driven, Nominal (THD+N <1%) |
| Power Output (4 Ohms) | 130Wrms Both Channels Driven, Nominal (THD+N <1%) |
| THD+N | <0.02% (1KHz, 2 channels, 1W@8 Ohms, A-Weighted) |
| Amplifier Type | Class AB |
| Gain | 29dB |
| Channel Separation | >75dB @10kHz |
| Channel Matching | <0.5dB |
| Signal to Noise Ratio | >80dBa 1W/8R, >98dBa 75W/8R |
| Frequency Response | 5Hz to 50KHz (-3dB) |
| Mains Transformer Rating | 400VA |
| Pre-Amplifier | |
| Volume Channel Matching | <0.25dB |
| THD+N | 0.002% (1KHz, 2Vrms at Pre-Out) |
| Signal to Noise Ratio | >104dB (unweighted) |
| RIAA (Phono) | 47k/56p loading; gain settings suitable for 12mV, 6mV, 3mV output cartridges |
| Bluetooth* | |
| Bluetooth® Type | A2DP Audio profile |
| Bluetooth® Codecs | SBC, aptX™, AAC |
| Bluetooth® Range | 15m (typical) |

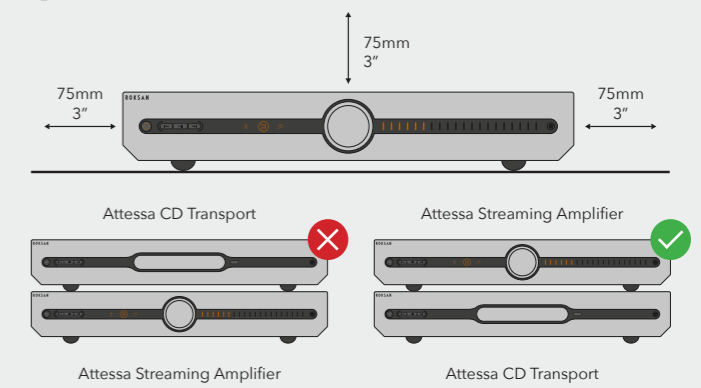
| Digital Inputs | |
|--|--|
| Digital Coax Input | up to 24bit/192kHz PCM |
| Digital Optical Input | up to 24bit/96kHz PCM |
| DAC | |
| Format Support | PCM |
| Sampling Rate | up to 192kHz/24bit |
| THD+N | 0.001% (1KHz, 2Vrms at Pre-Out) |
| Signal to Noise Ratio | 106dB (A-Weighted) |
| BluOS | |
| Audio Formats | MP3, AAC, WMA, OGG, WMA-L, ALAC, OPUS |
| Hi-Res Audio Formats | MQA, FLAC, WAV, AIFF Supports converted DSD playback via the BluOS desktop app |
| Sampling Rate | Up to 32 bit / 192kHz |
| Supported Operating Systems (BluOS Controller App) | Desktop (Minimum Spec) Windows 7 SP1 or above / macOS 10.9 Mavericks or above Mobile (Minimum Spec) iOS 9.3 or above / Android 5.0 Lollipop or above / Fire OS 5.0 or above |
| Supported Cloud Services | Amazon Alexa, Amazon Music, Spotify, TIDAL, Deezer, Qobuz, HDTracks, HighResAudio, Murfie, JUKE, Napster, Slacker Radio, KKBox, Bugs |
| Free Internet Radio | TuneIn Radio, iHeartRadio, Calm Radio, Radio Paradise |
| Control Integrations | Creston, Control4 (OS 3), Control4 (2.9.1), RTI, URC, Push, Lutron, ELAN, iPort |
| Power Supply | |
| Mains input | IEC Connector on rear panel Mains transformer will self-select for either 100-130 VAC 50/60Hz 210-240 VAC 50/60Hz (Operational down to 85VAC with reduced output power) |



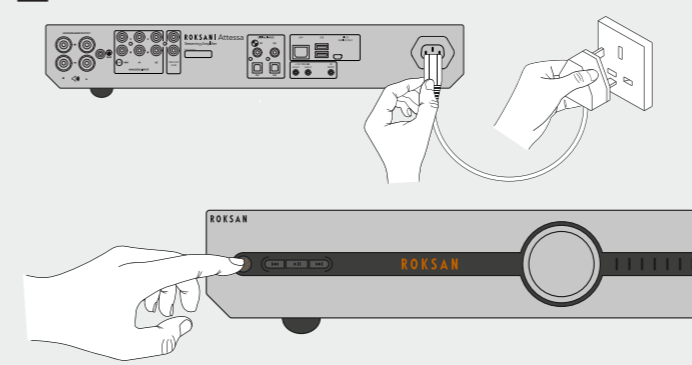
The BluOS logo is a trademark of Bluesound.
Apple and AirPlay are trademarks of Apple Inc., registered in the U.S. and other countries.
Qualcomm is a trademark of Qualcomm Incorporated, registered in the United States and other countries. aptX is a trademark of Qualcomm Technologies International, Ltd., registered in the United States and other countries.
Bluetooth® is a registered trademark of Bluetooth SIG, Inc.



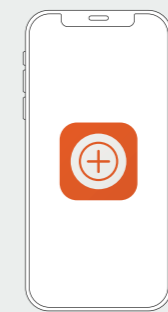
1 Place in suitable location



2 Power on



3 Download MaestroUnite App

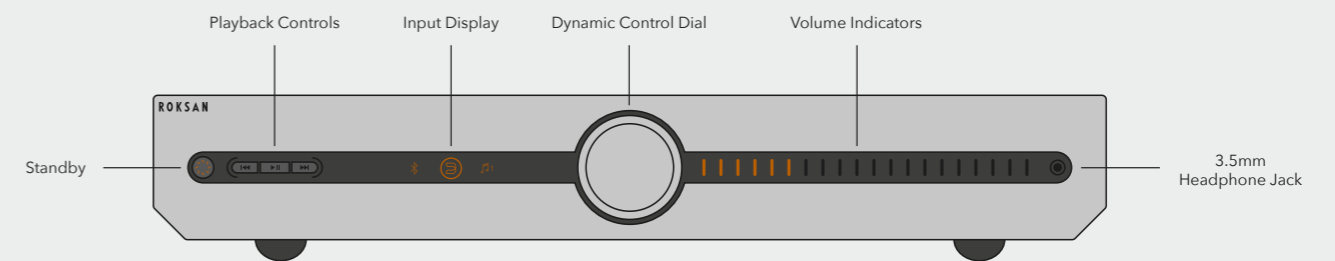


Follow the instructions on the app to finish setting up your product.

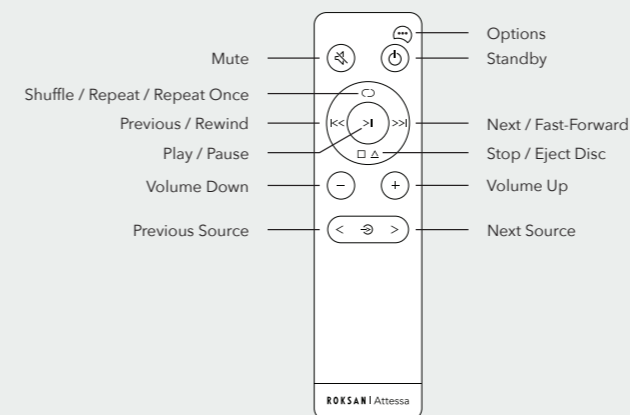
Already have MaestroUnite?
Open the app, select + then follow setup



Controls and Navigation

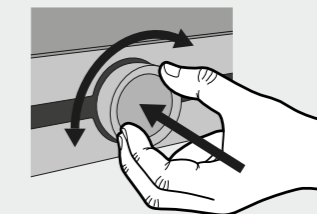


Using the Remote Control

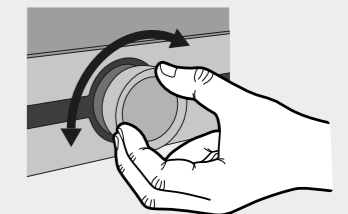


Using the Dynamic Control Dial

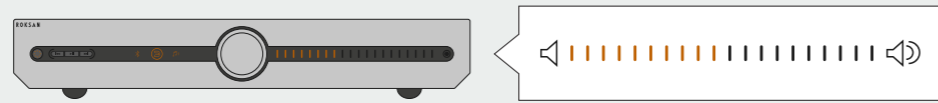
Change Source ↻



Volume 🔊

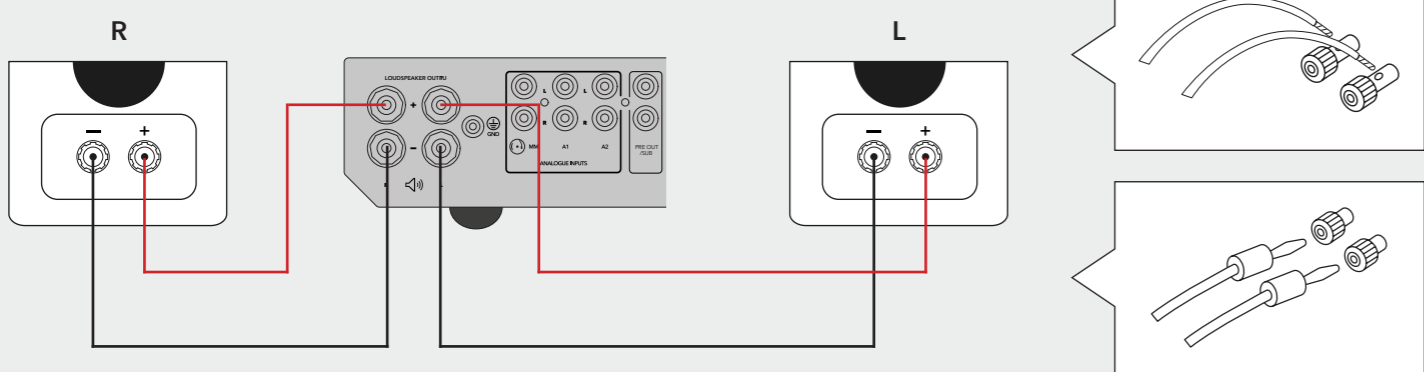


Input Display Icons and Volume

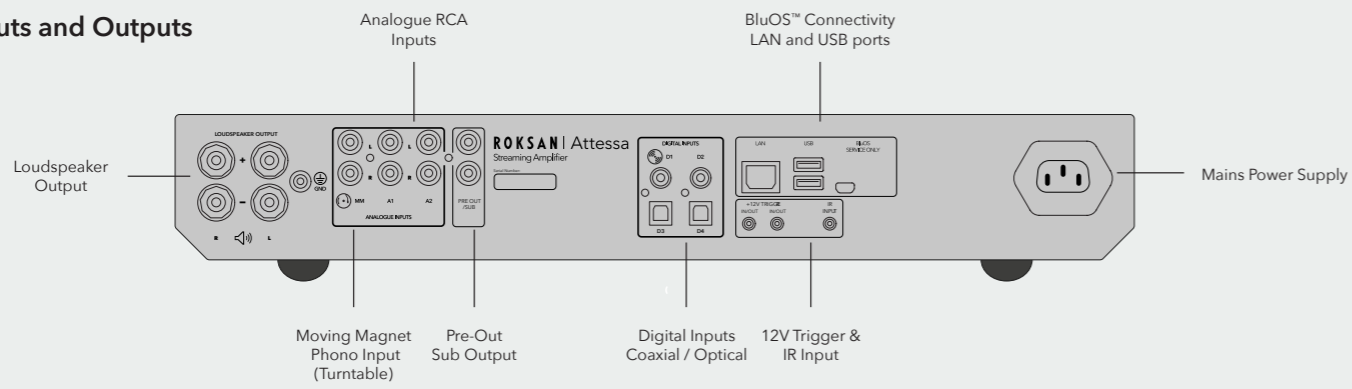


| | | | | | | | | | | | | | |
|------------------------------|------------------------------|--------------------------------|-------------------|--------------------------------------|--------------------------------------|--------------------------------------|-------------------|--------------|---------------------------|---------------------------|---------------------------|-----------------------------|--|
| A1 Analogue RCA | A2 Analogue RCA | MM Phono (Turntable) | CD (D1) | D2 Digital Coaxial (D2) | D3 Digital Optical (D3) | D4 Digital Optical (D4) | Bluetooth* | BluOS | BluOS Preset 1 | BluOS Preset 2 | BluOS Preset 3 | | |
| Mute | | | | Repeat All | | Repeat Once | | Shuffle | | MQA MQA Track | | MQA. MQA Studio Track | |

Connecting loudspeakers



Inputs and Outputs

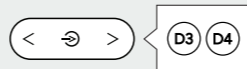
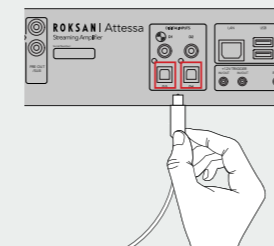
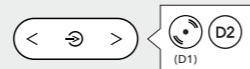
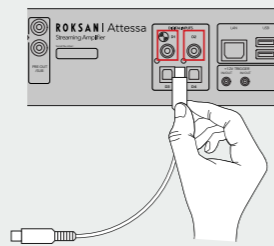
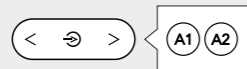
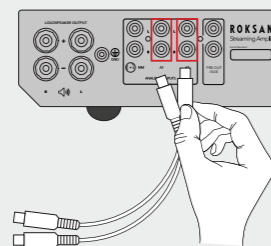
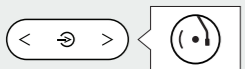
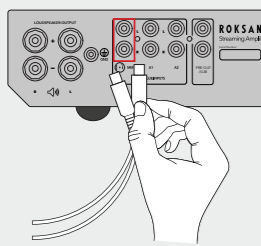


Moving Magnet Phono
Attessa Turntable
or Passive Turntable

Analogue RCA
A1 / A2

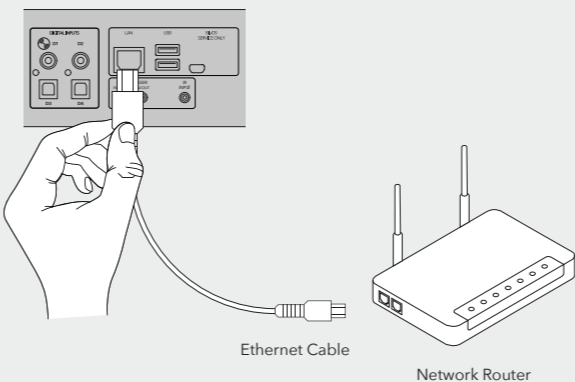
Digital Coaxial
D1 (CD) / D3

Digital Optical
D2 / D4

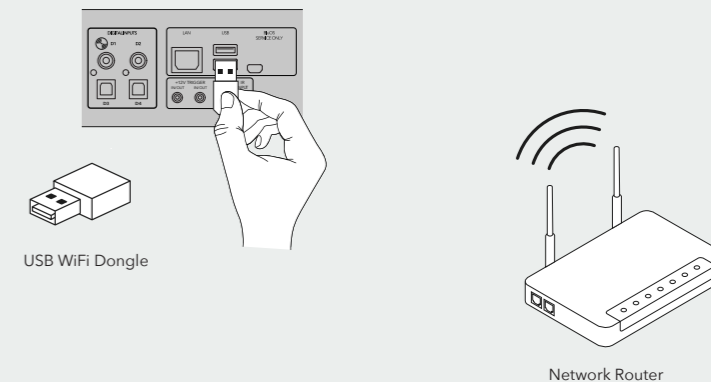


Using BluOS™

Wired connection



Wireless connection

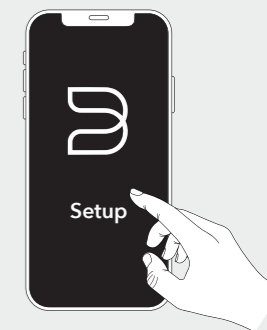


Download BluOS Controller App

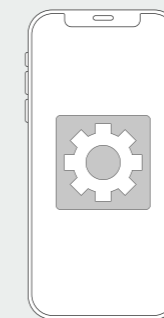
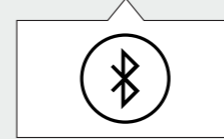


Download on the
App Store

GET IT ON
Google Play

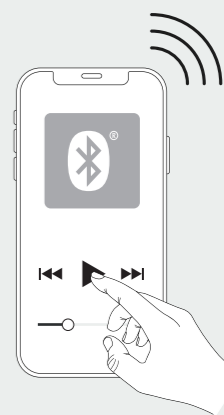


Using Bluetooth®



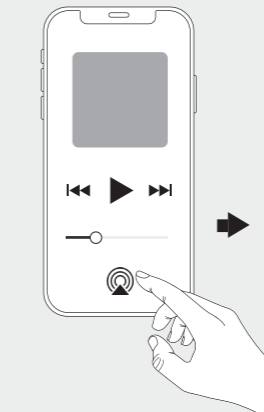
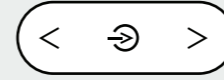
Bluetooth®

Attessa XX-XX



Using AirPlay 2®

iOS, iPadOS, macOS
and tvOS devices only



Attessa XX-XX

