

COCOON



PHANTOM II ON THE ROAD

Made for Phantom II, Cocoon carrying case features a thick-skinned and water-repellent exterior with an ultra-soft, second-skin interior for optimal protection on the go.

Cocoon is fitted with a padded inlay designed to form a protective barrier around Phantom II while leaving room for your power cable.

Light and resistant aluminium handles are manufactured using the same methods as mountaineering carabiners to ensure long-lasting performance.

Cocoon comes with a waterproof, non-slip shoulder strap for ease of transport.

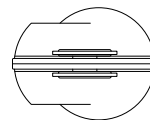
RANGE

PHANTOM II

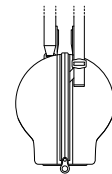
FINISH

- NEPTUNE BLUE
- MERCURY GREY
- JUPITER ORANGE

DIMENSIONS



245 mm / 9.6 in.



195 mm / 7.6 in.

235 mm / 9.2 in.