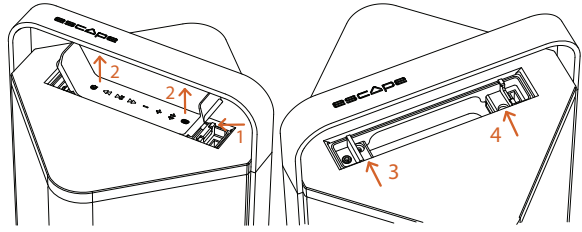


6.4 Aux 2: universal 3.5mm auxiliary input inside the compartment located underneath the keypad

The Escape P9 has a compartment underneath the keyboard with an additional 3.5 mm input and a USB power output to connect the optional M1 Air multi room module. (See Escape™ website for more information)



- 1 Open the keypad lid from the USB input and press against the snap-lock mechanism to release the keypad out of the compartment.
- 2 Remove the keypad from the top cover completely. Do not disconnect the keypad from the wire connector.
- 3 To re-install the keypad, slide it into the locking hook (3) next to the auxiliary input and gently press the keypad back into the snap-lock (4) mechanism.

7 Additional features

For additional features and information please check the complete user guide of the P9 on the www.escapespeakers.com website. (Stand-by mode, locking the keypad, anti-theft anchor point, replacing the battery, frequently asked questions, cleaning instructions and fabric care)

NOTE: To perform a factory reset, turn on the P9 and press the Play/pause button for 10 seconds until the unit switches off.

9.4 Returning a device for repairs

- 1 Pack the speaker in the original shipping box or a corrugated container with at least 3 inches / 7.5cm of resilient material to protect the unit from damage in transit.

NOTE: Escape is not responsible for any damage during transportation.

- 2 Bring the unit and proof of purchase to your retail store, along with a note explaining the nature of service required.
- 3 If the store of purchase's personnel cannot help you, please send an email to service@escapespeakers.com with a description of the defect, proof of purchase and serial number for a Return Merchandise Authorization number before returning the unit for repair.
- 4 Write the RMA number on the shipping label and ship to: Escape BV- Ter Heidelaan 50a - 3200 Aarschot - Belgium or an authorized service center.

Escape BV sells products only through authorized channels to ensure that customers obtain proper support and service. Any Escape product purchased from an unauthorized dealer or source will not be honored or repaired under the existing warranty policy. Any sale of products by an unauthorized source or other manner not authorized by Escape shall void the warranty on the applicable product. Please check our [website](http://www.escapespeakers.com) for the list of authorized Escape retailers.

NOTE: (*) Escape's limited warranty does not modify, affect or substitute the rights under statutory consumer protection laws that may vary from country to country.

Designed by Escape BV Belgium and manufactured in China

8 App

Dedicated Escape Remote app for iOS® and Android™. Select different audio sources, adjust the start-up volume, choose between 3 different optimized DSP and equalizer pre-settings (standard, indoor, outdoor) and 1 custom setting via a 5-band graphic equalizer to create a responsive curve more appealing to your personal taste. Thanks to the dual 24-bit DSP processor you can switch between a direct or wide soundstage. Adjust the balance between two speakers in Twin mode and lock the keypad control buttons (useful in professional settings such as bars and restaurants).

The Escape Remote App can be downloaded on the Apple App Store or the Google Play Store. The separate user manual for the app can be downloaded on the [website](http://www.escapespeakers.com).



9 Warranty and compliance

9.1 Limited warranty for the unit

The unit is covered by a 1-year limited warranty (*) from the date of invoice when used in accordance with the Escape P9 user manual. The warranty includes any spare parts and labor required to repair the product. This warranty does not cover damage caused by abuse, accident, misuse, negligence, or improper operation or installation, products that have been modified or products whose identifying number or serial number have been altered, defaced, or removed. For this warranty to apply, you must use the unit according to the instructions.

9.2 Limited warranty for the battery

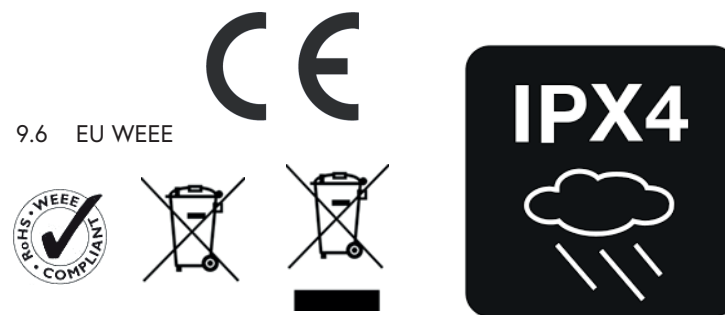
The battery is covered by a 6-month warranty worldwide.

9.3 Caution

Marking and rating plate are located at the bottom enclosure of the apparatus.

9.5 European Union

Escape BV hereby declares that this product is in compliance with the essential requirements and other relevant provisions of Directive 2014/53/EU and all other applicable EU directive requirements.



9.6 EU WEEE



In accordance with the European Union WEEE (Waste Electrical and Electronic Equipment) directive effective August 13, 2005, we would like to notify you that this product may contain regulated materials which upon disposal, according to the WEEE directive, require special reuse and recycling processing. When disposing of packaging and other related shipping materials we encourage you to recycle these items through the normal channels.

Escape P9 battery meets the UN38.3 regulations.

The IPX4 rating of a product means that the product is suitable for all weather conditions and is resistant to strong water splashes. However, it is not resistant to immersion. Damage to the Aux or USB input caused by water infiltration through an open keypad cover are never covered under warranty

escape™

Escape P9 Quick-start guide

1 Electrical safety advisory

1.1 Important safety information

Make sure that you have read the complete safety information on the www.escapespeakers.com website before using this product.

- Read and keep these instructions.
- Do not submerge the unit in water or other liquids. The product is weather-resistant but not water-resistant. Place the speaker inside if you are not using it for a long period of time.
- Do not install near any heat sources. Do not place open flames, such as lighted candles, on or near the product.
- Do not defeat the safety purpose of the polarized or grounding-type plug. If the provided plug does not fit into your power outlet, consult an electrician to replace the obsolete outlet.
- Protect the power cord from being walked on or pinched, particularly at power outlets, convenience receptacles, and the point where they exit the unit. Do not touch the power cord with wet hands.
- Unplug this unit during lightning storms or when you do not use it for long periods of time.
- Polyester and plastic bags can be dangerous. To avoid danger of suffocation, keep the unit's packaging away from babies and children.
- Be careful when placing the Escape P9 outdoors and directly exposed to sunlight. The aluminum handle absorbs and disperses heat. Make sure to take the necessary precautions to prevent injuries and dangerous situations.
- Only use the built-in charger of the Escape P9 to charge the battery.

Control button	Function
	Turn the Escape P9 on and off
	Play the previous song
	Start or pause a song
	Play the next song
	Decrease the volume
	Increase the volume
	Connect a device using Bluetooth®
	Connect a second Escape P9 using Twin mode

- If the battery leaks and the electrolyte gets into your eyes, do not rub them, instead, thoroughly rinse the eyes with clean running water for at least 15 minutes, and immediately seek medical attention to avoid eyes injury.
- If the battery gives off an odor, generates heat, becomes discolored or deformed, or in any way appears abnormal during use, recharging or storage, immediately remove it from the device and dispose of it.
- If the battery's useful life expires, wrap the fully discharged battery in insulating tape and put the battery in the specialized recycle bin.

2 Important note on keypad operation

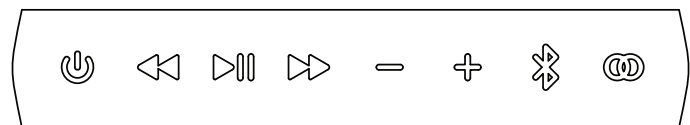
Avoid leaving the P9 in direct sunlight when the ambient temperature exceeds 35°C - 95°F. The functioning of the keypad will be disabled when the P9 is overheated. Move the P9 to a cooler place and allow it to cool down. The P9 can still be controlled via the application. P9 operating temperature: 0°C - 45°C - 32°F - 110°F.

3 Items included

- Escape P9
- Country-specific right-angle AC power cord:
 - length: 1.5 meters (5 feet)
- 3.5mm stereo jack cable:
 - length: 50cm (20 inch)

4 Getting started

4.1 Keypad control buttons (see also point 2)



4.2 Charging the internal battery

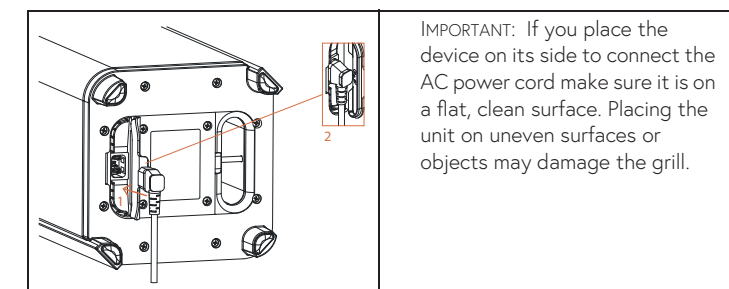
A complete charging cycle takes between two and three hours. You can use the Escape P9 during the charging process.

Never leave the unit unattended while charging.

The built-in battery is partially charged in the factory for the purpose of testing. Before using the Escape P9 for the first time, you have to completely charge the internal battery.

The battery will slowly discharge if:

- it is not connected to the AC power
- it is not used for several weeks



IMPORTANT: If you place the device on its side to connect the AC power cord make sure it is on a flat, clean surface. Placing the unit on uneven surfaces or objects may damage the grill.

- 1 Open the protective cover from the AC power socket located at the bottom of the unit.
- 2 Connect the right-angle AC power cord to the three-prong outlet and insert the power cord plug into an AC outlet. The power LED light will be red, indicating that the unit is charging. The battery is fully charged when the red LED is off.
- 3 Remove the right-angle AC power cord from the three-prong outlet and close the protective cover.

4.3 Power LED - battery status indicator

 The power LED light indicates the status of the internal battery.

LED appearance	Battery status
flashing red for 3 seconds and white for 0.5 seconds	The battery charge has reached approximately 20%. The unit is not connected to a power outlet and the battery needs to be charged.
solid red	The unit is connected to a power outlet and is charging.
white	The battery is fully charged.
rapidly flashing red for 10 seconds	Battery error, for example when the power cable is connected to a power outlet but no battery has been installed.

4.4 Turning the Escape P9 on and off

- 1 Press and hold down the power button on the keypad for one second. The power LED will light up and turn green. After 3 seconds, all keypad LEDs will turn white.
- 2 To turn the unit off, shortly press the power button again.

4.5 Track controls

You can navigate through tracks, pause and play using:

- the Escape P9 keypad [control buttons](#)
- the music app of your choice
- the Escape P9 [app](#)

IMPORTANT: If the Escape P9 is not listed the first time please turn Bluetooth® on and off on your mobile device.

TIP: Learn more about the Escape P9 [app](#).

5.2 Clearing the Bluetooth® memory

Press and hold down the Bluetooth® button on the Escape P9 keypad for 10 seconds until you hear a short confirmation tone.

All Bluetooth® devices stored in the memory will be erased.

5.3 Disconnecting an Apple® (iOS®) device

- 1 On your device, go to Settings > Bluetooth®.



- 2 In the My Device list, select the Escape P9 and tap the information symbol next to Connected.



- 3 Select either Disconnect or Forget This Device.

The Bluetooth® button on the keypad will start flashing blue and white. The device is no longer paired with the Escape P9.

5.4 Disconnecting an Android™ device

- 1 On your device, go to Settings > Connections.



- 2 Select Bluetooth®.
- 3 Select the Escape P9 in the list of paired devices.

4.6 Volume control

You can increase or decrease the volume using:

- the Escape P9 keypad [control buttons](#)
- the music app of your choice
- the volume buttons on your device (in Bluetooth® mode only)
- the Escape P9 [app](#)

5 Bluetooth® pairing

5.1 Connecting an Android™ and Apple® device

The Escape P9 memory can hold up to 8 different Bluetooth® devices. If a new device is paired after the maximum of 8 has been reached, the new one will replace the paired device with the oldest connection.

- 1 Press and hold down the power button on the keypad for one second. The power LED will light up and turn green. After 3 seconds, all keypad LEDs will turn white.
- 2 To start the Bluetooth® pairing sequence, shortly press the Bluetooth® button. The white LED will start flashing blue and white for 2 minutes.
- 3 Go to Settings on your Apple® (iOS®) or Android™ device and turn on Bluetooth®.
- 4 Select Escape P9 xxxx from the device list. The xxxx represents the last 4 digits of the device name and is a unique combination that is also part of the serial number. You can find the complete serial number on the label next to the battery compartment, located on the bottom of the unit or on the shipping box. Do **not** select Escape P9 xxxx App on your device if listed. You will **not** be able to stream music if you do. Once the connection has been established, the Bluetooth® symbol on the Escape P9 keypad will be solid blue.
- 5 Adjust the volume and navigate through tracks using your device or the buttons on the keypad.

- 4 Select Unpair.

The Bluetooth® button on the keypad will start flashing blue and white. The device is no longer paired with the Escape P9.

5.5 Bluetooth® Twin mode

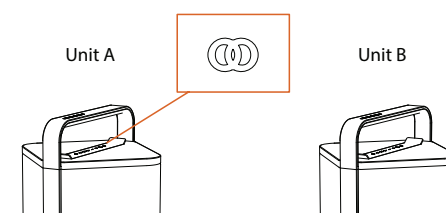
Bluetooth® audio streaming has been limited to one speaker for many years. Now you can connect two Escape P9 speakers via Bluetooth® thanks to Twin mode.

Setting up Bluetooth® Twin mode



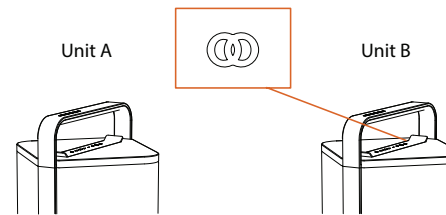
Make sure that both units are in close range during setup. The maximum range (5 to 10 meters) between the two speakers may vary depending on environmental factors and the presence or absence of shields and obstacles. During setup, make sure that the Bluetooth® symbol on the Escape P9 keypad is not green. No external audio input should be activated (Aux 1, Aux 2 or USB Flash Drive) on any of the two devices.

- 1 Turn on unit A and don't [connect](#) your mobile device via Bluetooth® yet. All keypad LEDs must be white. (see also unit B)
- 2 Turn on unit B. All keypad LEDs must be white. If the Bluetooth® LED is blue, unit B is connected to another audio device than unit A. Disconnect the Bluetooth® link on this other device (see [Disconnecting an Apple® \(iOS®\) device](#) and [Disconnecting an Android™ device](#)) or reset the Bluetooth® memory on unit B (see [Clearing the Bluetooth® memory](#)). Make sure that unit A and unit B are in close proximity.
- 3 Press the Twin button on unit A twice within a very short time. The Twin button on unit A will be flashing blue and white every 2 seconds.



Unit A will act as the master device.

- 4 Press and hold the Twin button on unit B until you hear a confirmation tone.



The pairing sequence between unit A and B will start. Both Twin buttons will start flashing blue and white every 2 seconds. Unit B will act as the Twin device.

The pairing sequence between unit A and B is successful when the Twin button LEDs on unit A and B are solid blue.

NOTE: If you accidentally activate the Twin mode, you must switch the P9 off and on again to end the activation or wait until the Twin mode search function automatically ends after 2 minutes.

- 5 Start the Bluetooth® audio pairing with the master speaker (Unit A) and your mobile audio device according to the instructions in section 5.1 point 2 from this Quick Start Guide. Your music will now be played in stereo on both devices (Unit A and Unit B).

6 Connecting external audio sources

You can connect the Escape P9 to the following external audio sources:

- 1 [Aux 1: universal 3.5mm auxiliary input](#)
- 2 [USB flash drive](#)
- 3 [Aux 2: universal 3.5mm auxiliary input inside the compartment located underneath the keypad](#)

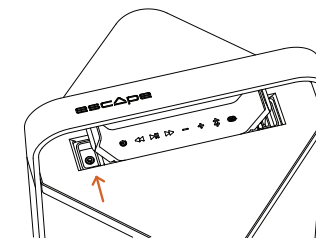
6.1 Priority

External audio sources are listed in order of priority. Lower priority audio sources will be deactivated when an audio input of a higher priority is activated. When one of the 3 external source inputs is activated, the Bluetooth® button on the Escape P9 keypad will change from solid blue to green.

IMPORTANT: Please observe all warnings in this section that may void warranty.

6.2 Aux 1: universal 3.5mm auxiliary input

The 3.5mm aux input has the **highest priority**.



- 1 Lift up the left side of the keypad.
- 2 Connect any portable music player to the aux input using the 3.5mm stereo jack cable provided with the unit.

Tip: When unit A and B are turned off, turn on unit B first and then unit A for a smooth Twin pairing between the two devices and your Bluetooth® connection to unit A and your mobile device.

Keypad functions in Twin mode

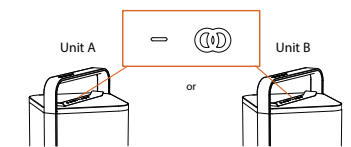
When streaming music from an Apple® or Android™ device using Bluetooth®, the control buttons will work on both units. Volume up and down is synchronised and can be controlled on the device and on the Escape P9 keypad.

External audio sources connected to the master speaker

Once the Twin mode has been set up, you can connect external audio sources to the master device, such as MP3 players or a USB flash drive. (For more details see [external audio sources](#)). External sources connected to the master will also play on the twin unit.

Disabling the Twin mode between devices

Press and hold down the Twin and the volume down button simultaneously for 2-3 seconds on either master or twin speaker until you hear a short confirmation tone.



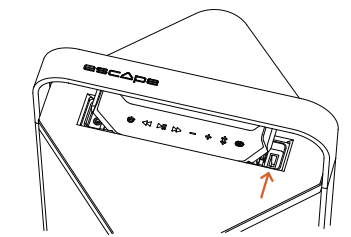
The blue LEDs on master and twin unit will turn white, indicating that Twin mode has been disabled on both units.

The volume controls on the external player and the keypad are no longer synchronized and the track control buttons will not function.

- 3 For optimum playback quality, set the volume of the external audio player to approximately 80%.
- 4 Adjust the desired output volume of the Escape P9 via the control buttons on the keypad.

6.3 USB flash drive

- The Escape P9 can read audio files in MP3 and WMA formats. Files in DRM (Digital Rights Management) copyright protection or files downloaded from an online music store cannot be played.
- The USB input will not work as a playback input for Apple® devices.
- The input is in compliance with USB 2.0 (Full Speed).
- The USB flash drive input is **not a charging port**.



- 1 Lift up the right side of the keypad.
- 2 Plug a USB flash drive into the USB port.
- 3 Adjust the volume and navigate through tracks with the control buttons of the keypad.